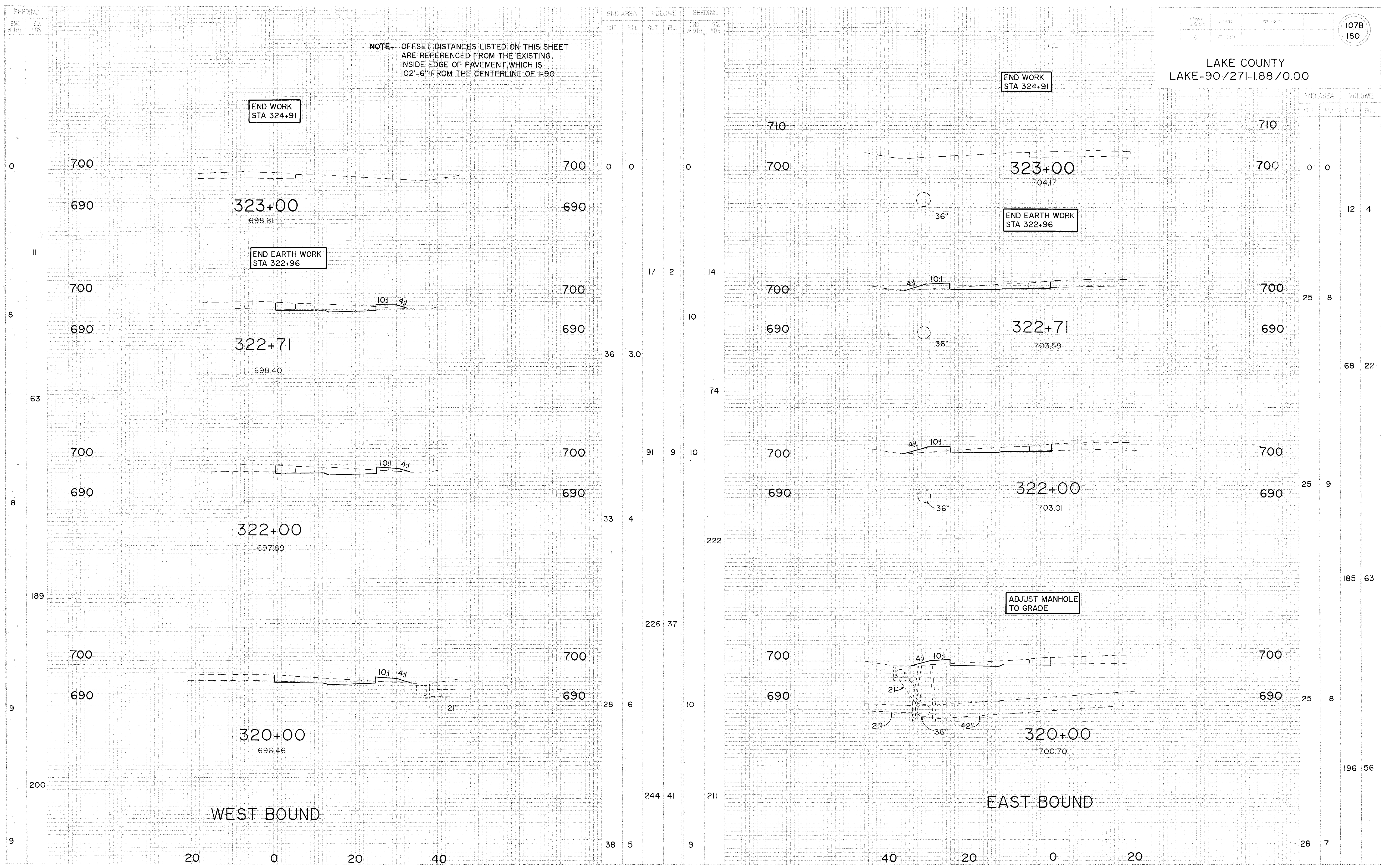


NOTE- OFFSET DISTANCES LISTED ON THIS SHEET  
ARE REFERENCED FROM THE EXISTING  
INSIDE EDGE OF PAVEMENT, WHICH IS  
102'-6" FROM THE CENTERLINE OF I-90



CROSS SECTIONS STA 320+00 TO STA 324+00