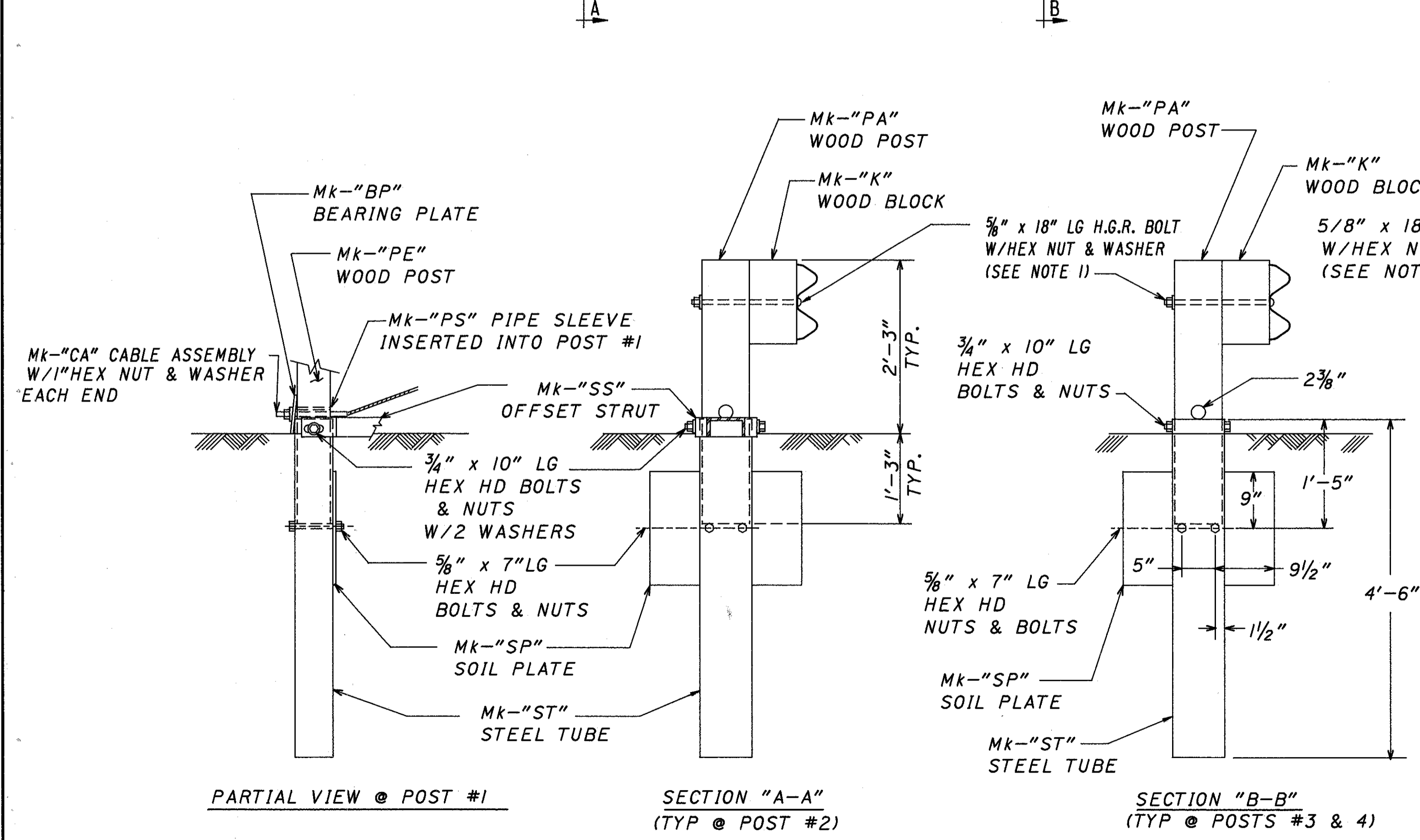
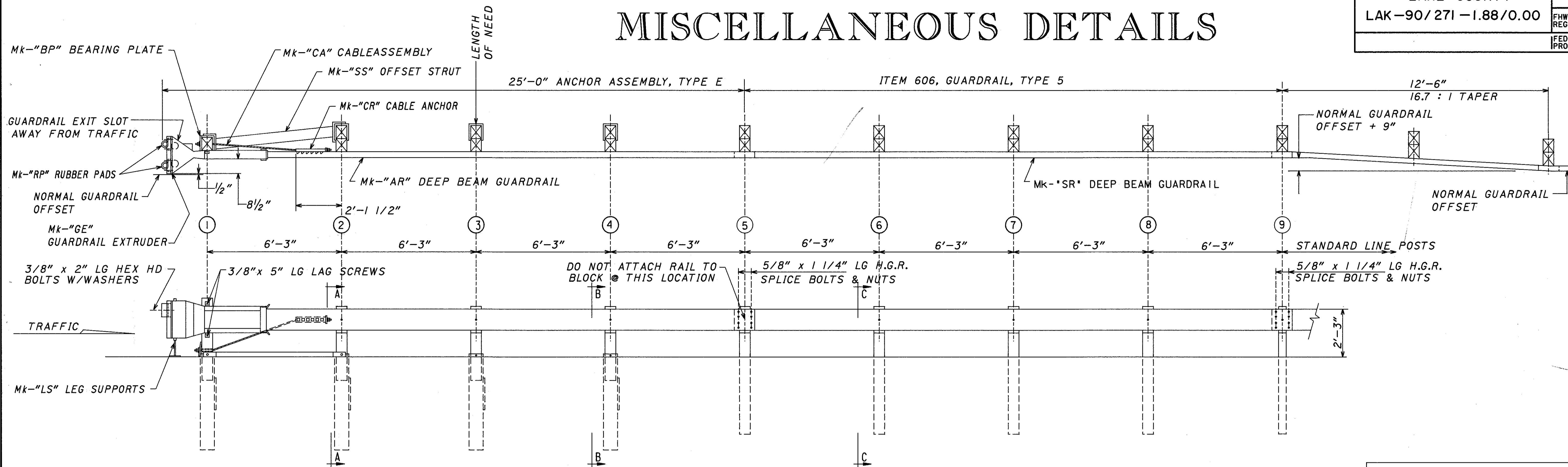


MISCELLANEOUS DETAILS

80
185



- NOTES:
- 1.) THE 5/8" FLAT WASHER IS USED UNDER THE NUT, BEHIND THE POST ONLY. NO WASHER IS USED AT THE RAIL.
 - 2.) THE BREAKAWAY POSTS @ LOCATIONS #5, 6, 7 & 8 MAY BE AS SHOWN OR MAY UTILIZE POSTS AS SHOWN WITH FOUNDATION TUBES. POSTS @ LOCATIONS #1,2,3 & 4 MUST USE FOUNDATION TUBES.
 - 3.) TYPE E WAS TESTED ON FLAT & LEVEL TERRAIN. IT IS NOT RECOMMENDED ON SLOPES.

PAYMENT: ANY ADDITIONAL COSTS IN EXCESS OF NORMAL GUARDRAIL COSTS FOR MATERIALS AND LABOR FOR INSTALLATION OF POSTS @ LOCATIONS #5, 6, 7, & 8 SHALL BE INCLUDED IN THE UNIT PRICE BID FOR ITEM 606, EACH, ANCHOR ASSEMBLY, TYPE E.

NOTE: SECTION "C-C" IS SIMILAR @ POST #5 EXCEPT RAIL IS NOT ATTACHED.

BILL OF MATERIAL		
MK	QTY	DESCRIPTION
PE	1	WOOD POST 5 1/2" X 7 1/2" X 3'-10"
LS	2	LEG SUPPORT
RP	2	RUBBER PAD
SR	1	DEEP BEAM GUARD RAIL (12GA)
AR	1	DEEP BEAM GUARD RAIL (12GA)
PS	1	PIPE SLEEVE
SP	4	SOIL PLATE 18" X 24" X 1/4"
K	7	WOOD BLOCK 6" X 8" X 14"
PG	4	WOOD POST 6" X 8" X 6'
PA	3	WOOD POST 5 1/2" X 7 1/2" X 3'-6"
ST	4	STEEL TUBE 6" X 8" X 3/16"
BP	1	BEARING PLATE
CR	1	CABLE ANCHOR
CA	1	CABLE ASSEMBLY
SS	1	OFFSET STRUT (LEFT OR RIGHT)
GE	1	GUARDRAIL EXTRUDER
HARDWARE		
	4	3/4" x 10" HEX HD BOLT
	4	3/4" HEX NUT
	4	3/4" WASHER
	7	5/8" x 18" H.G.R. POST BOLT
	16	5/8" x 1 1/4" H.G.R. SPLICE BOLT
	8	5/8" x 7" HEX HD BOLT
	16	5/8" H.G.R. NUT
	15	5/8" HEX NUT
	7	5/8" WASHER
	2	3/8" x 5" LAG SCREW
	4	3/8" x 2" HEX HD BOLT
	4	3/8" WASHER
	2	1" HEX NUT
	2	1" WASHER

STATE OF OHIO
DEPARTMENT OF TRANSPORTATION
DISTRICT 12 LOCATION & DESIGN

TYPE E ANCHOR ASSEMBLY
PLAN, ELEVATION & SECTIONS
OPTION "C"

PLOT SUBMITTED: 09-JUN-1992 08:47
08434GRC.dgn
PLOTTED BY: lemmon
PLOTTED FROM: c:\dgn\pic08434\08434grc.dgn