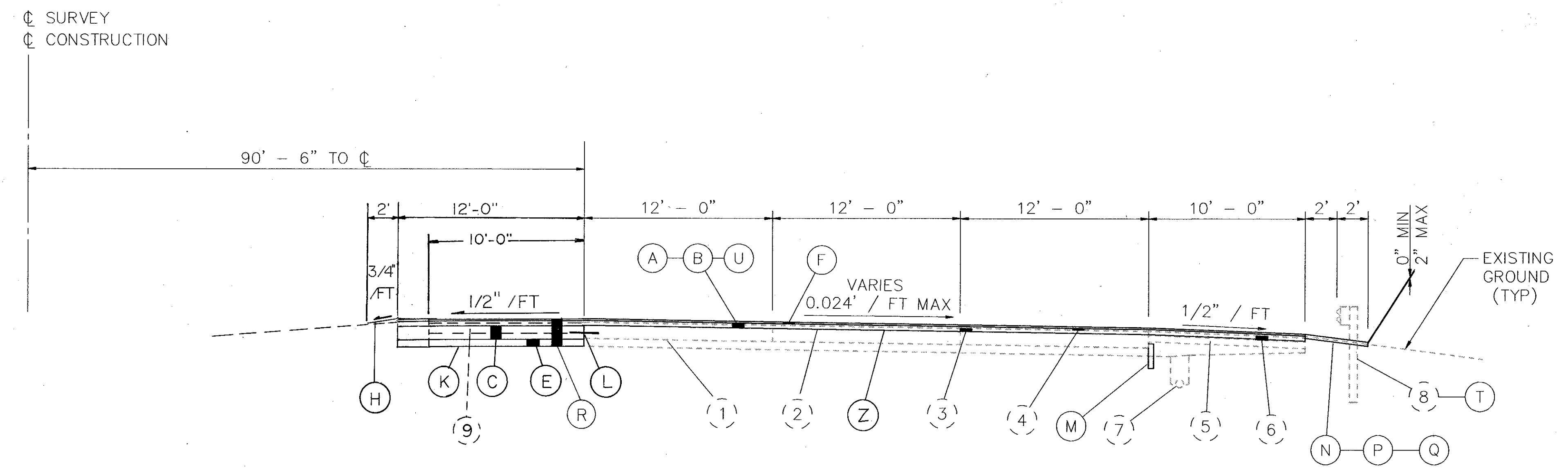
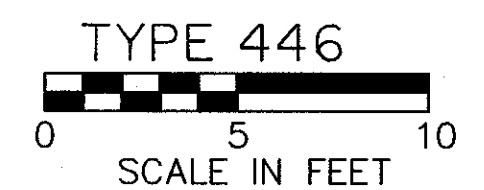


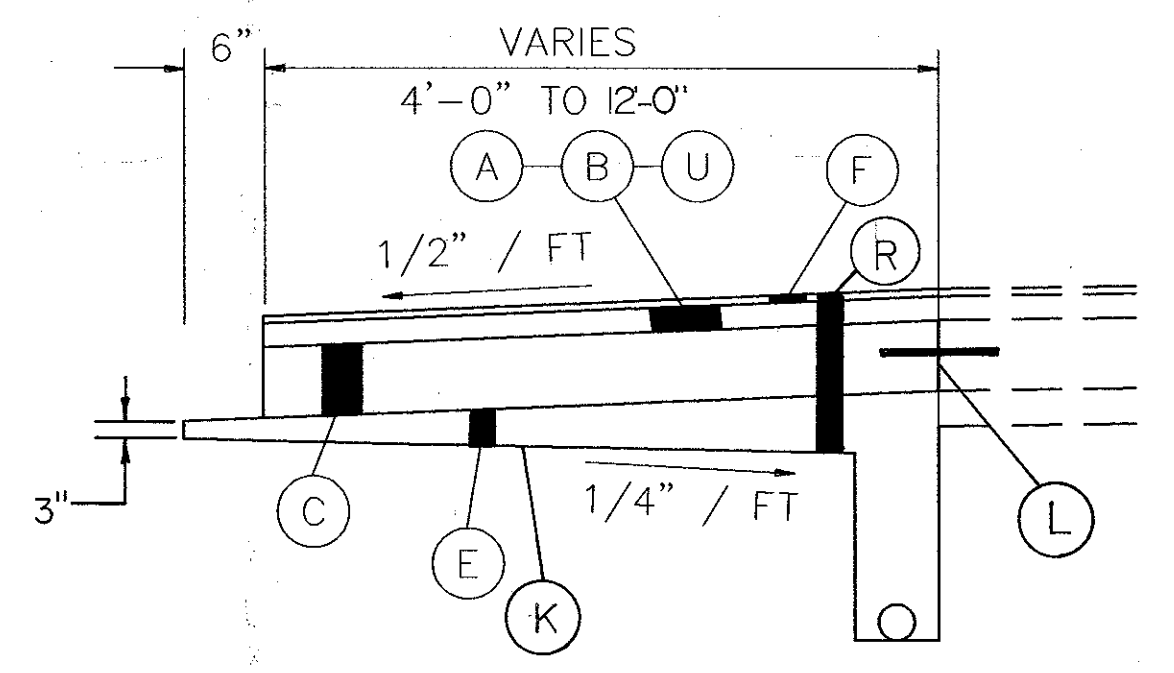
TYPICAL SECTIONS

LAKE COUNTY	OHIO	5 185
LAK-90/271-1.88/0.00	FHWA REGION 5	
	FEDERAL PROJECT	



TYPICAL 3 LANE SECTION

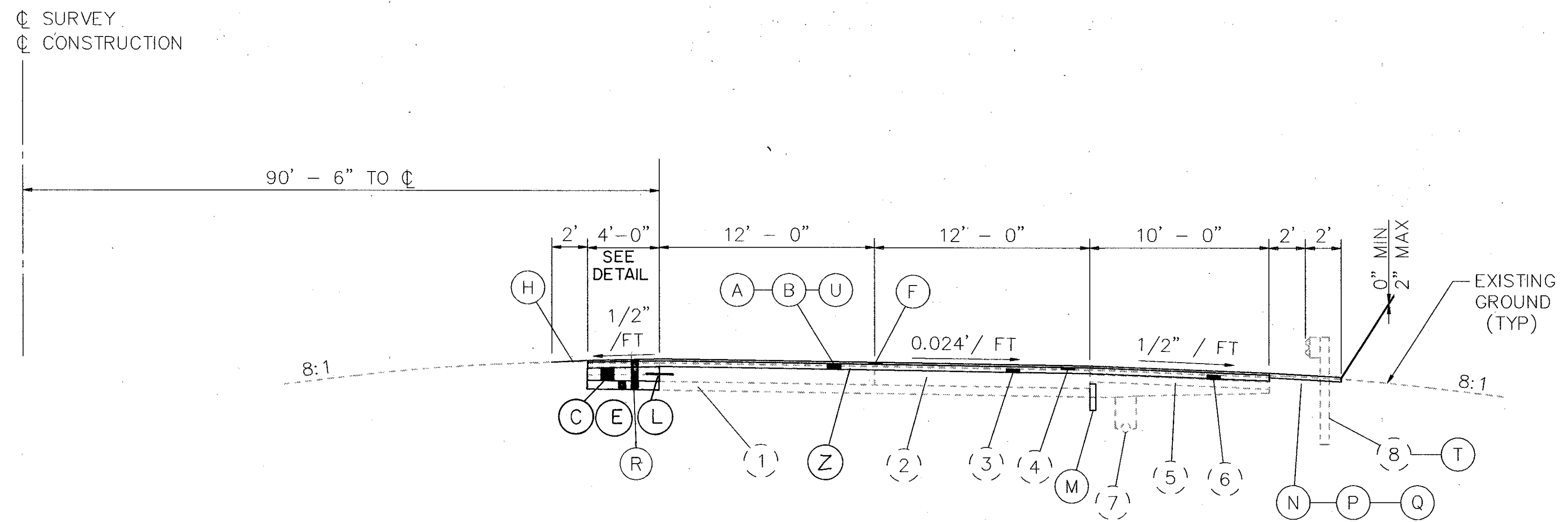
I-271
 STA. 55 + 40.60 TO STA. 59 + 00.35 NORTH BOUND
 STA. 55 + 40.60 TO STA. 62 + 67.71 SOUTH BOUND



SHOULDER DETAIL

I-271
 VARIES FROM 12'-0" TO 4'-0"
 STA. 60+50.00 TO STA. 65+30.00 NORTH BOUND
 STA. 62+67.71 TO STA. 67+47.71 SOUTH BOUND

VARIES FROM 4'-0" TO 12'-0"
 STA. 87+60.11 TO STA. 92+40.11 NORTH BOUND
 STA. 85+83.78 TO STA. 90+63.78 SOUTH BOUND



TYPICAL 2 LANE SECTION

I-271
 STA. 59 + 00.35 TO STA. 92 + 40.11 NORTH BOUND
 STA. 62 + 67.71 TO STA. 90 + 63.78 SOUTH BOUND

NOTE:
 TYPICAL SECTIONS ARE INTENDED TO SHOW GENERAL ROADWAY AND PAVEMENT FEATURES ONLY; FOR DETAIL, SEE PLAN SHEET.

FOR LEGEND, SEE SHEET NO. 4

ACAD FILE : TYP_SEC2.DWG