

TYPICAL SECTIONS

LAKE COUNTY
LAK-90/271-1.88/0.00

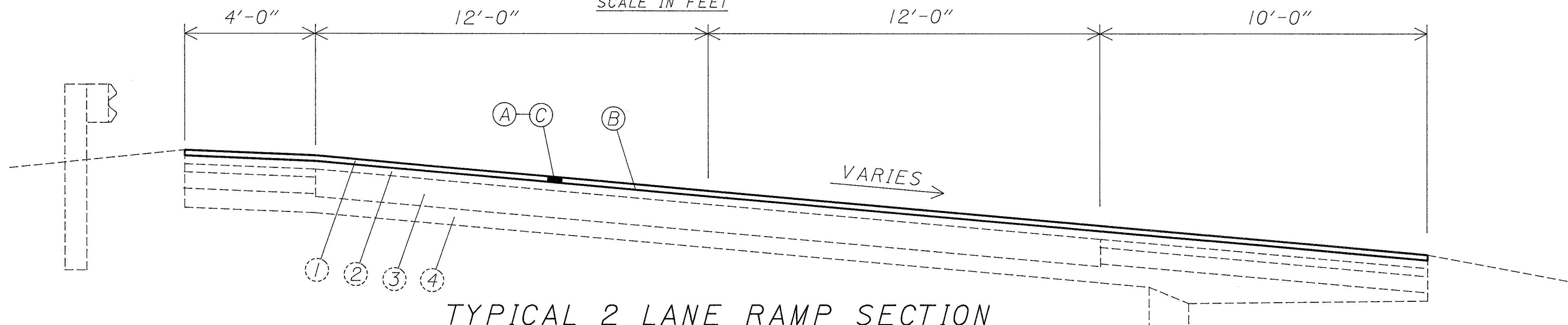
OHIO

FHWA
REGION 5

FEDERAL
PROJECT

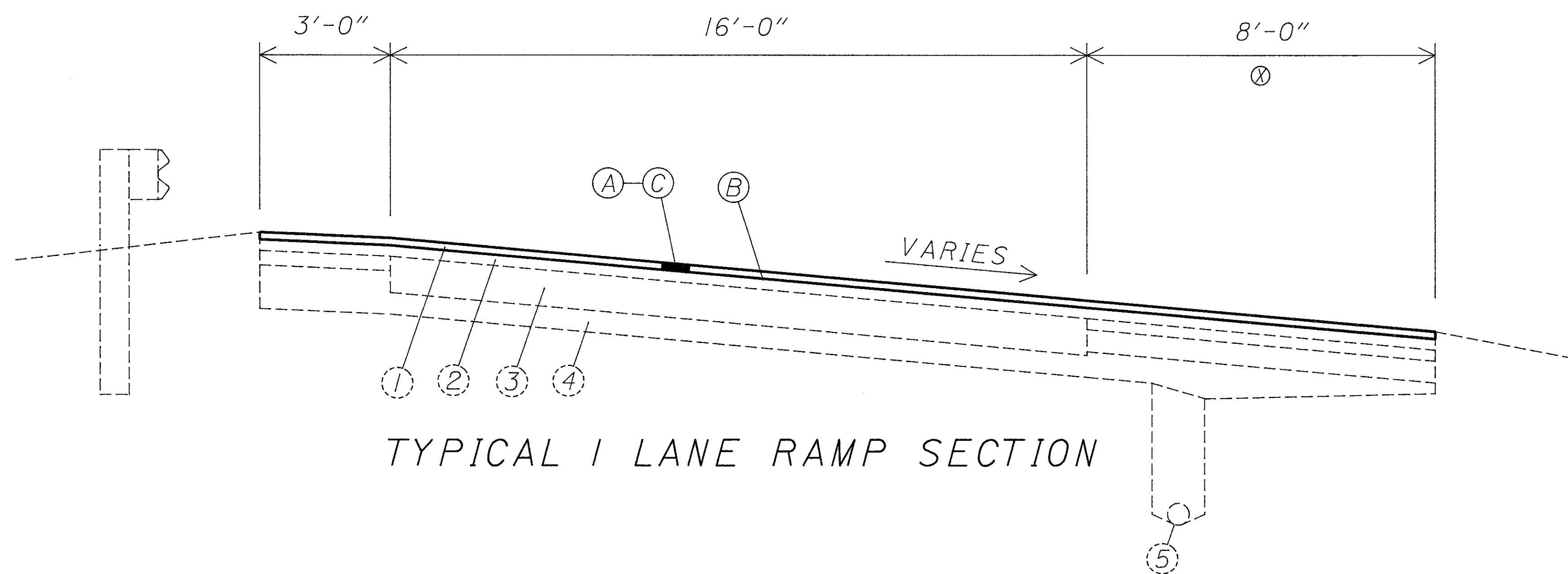
8
49

1 0 2 4
SCALE IN FEET



TYPICAL 2 LANE RAMP SECTION

<u>RAMP "A"</u>	<u>RAMP "B"</u>	<u>RAMP "C"</u>	<u>RAMP "D"</u>
STA. 0+84.86 TO STA. 29+21.53	STA. 5+79.29 TO STA. 26+85.07	STA. 8+13.64 TO STA. 42+28.41	STA. 18+13.64 TO STA. 38+78.80



TYPICAL 1 LANE RAMP SECTION

⊗ - 3'-0" IN WEIGH
STATION RAMPS J & K
AND REST AREA
RAMPS Q,R,S,T

<u>RAMP "E"</u>	<u>RAMP "H"</u>	<u>RAMP "M"</u>	<u>RAMP "R" (REST AREA)</u>
STA. 4+63.97 TO STA. 20+71.96	STA. 13+69.70 TO STA. 28+49.60	STA. 8+37.55 TO STA. 16+18.23	STA. 0+00 TO STA. 10+61.95
<u>RAMP "F"</u>	<u>RAMP "J" (WEIGH STATION)</u>	<u>RAMP "N"</u>	<u>RAMP "S" (REST AREA)</u>
STA. 4+74.39 TO STA. 22+16.66	STA. 4+53.04 TO STA. 11+74.62	STA. 6+12.41 TO STA. 18+72.52	STA. 0+00 TO STA. 11+27.51
<u>RAMP "G-H"</u>	<u>RAMP "K" (WEIGH STATION)</u>	<u>RAMP "P"</u>	<u>RAMP "T" (REST AREA)</u>
STA. 5+23.01 TO STA. 13+69.70	STA. 2+45.60 TO STA. 13+50	STA. 9+36.70 TO STA. 23+15.16	STA. 0+00 TO STA. 5+46.28
<u>RAMP "G"</u>	<u>RAMP "L"</u>	<u>RAMP "Q" (REST AREA)</u>	
STA. 3+69.70 TO STA. 11+43.98	STA. 5+45.58 TO STA. 18+97.23	STA. 3+96 TO STA. 12+28.39	

FOR LEGEND, SEE SHEET 6

PLOT SUBMITTED BY: GRMOVSEK 4-MAY-1990 09:20

PLOT SUBMITTED BY: GRMOVSEK

ZFI:[100,350]JOLK90GYA.DGN;2

3
4
5
6
7
8
9
10
11
12
13
14
15
16
17
18
19
20
21
22
23
24
25
26
27
28
29
30
31
32
33
34
35
36
37
38
39
40
41
42
43
44
45
46
47
48
49
50
51
52
53
54
55
56
57
58
59
60
61
62
63