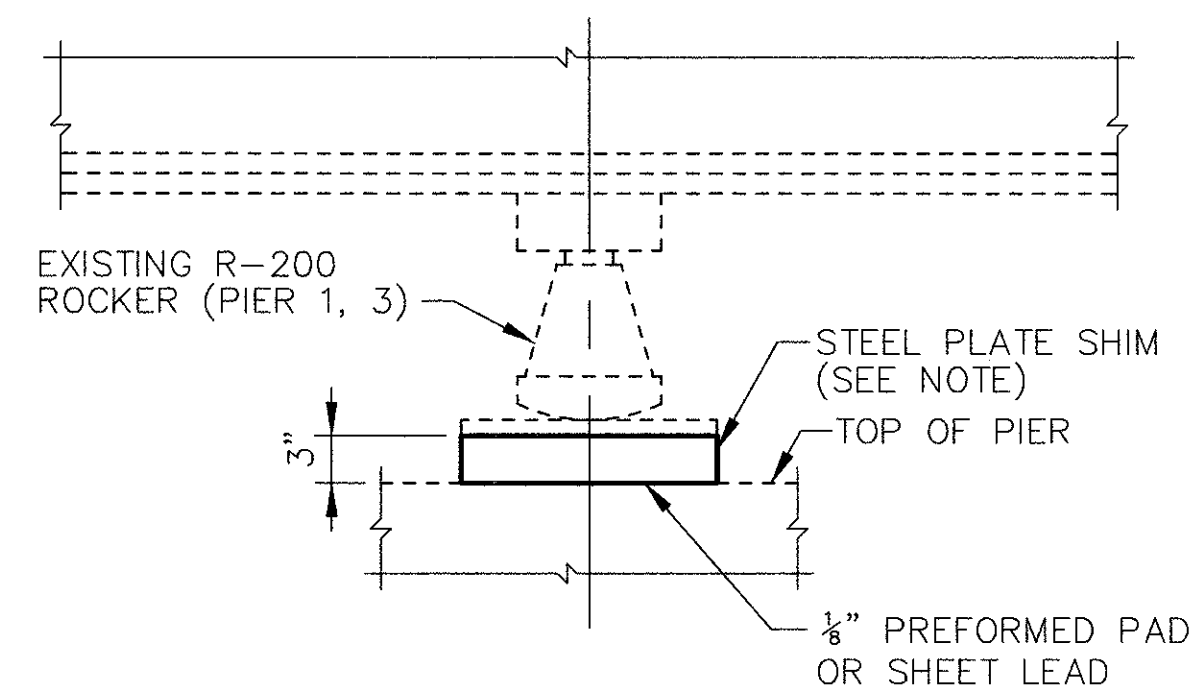


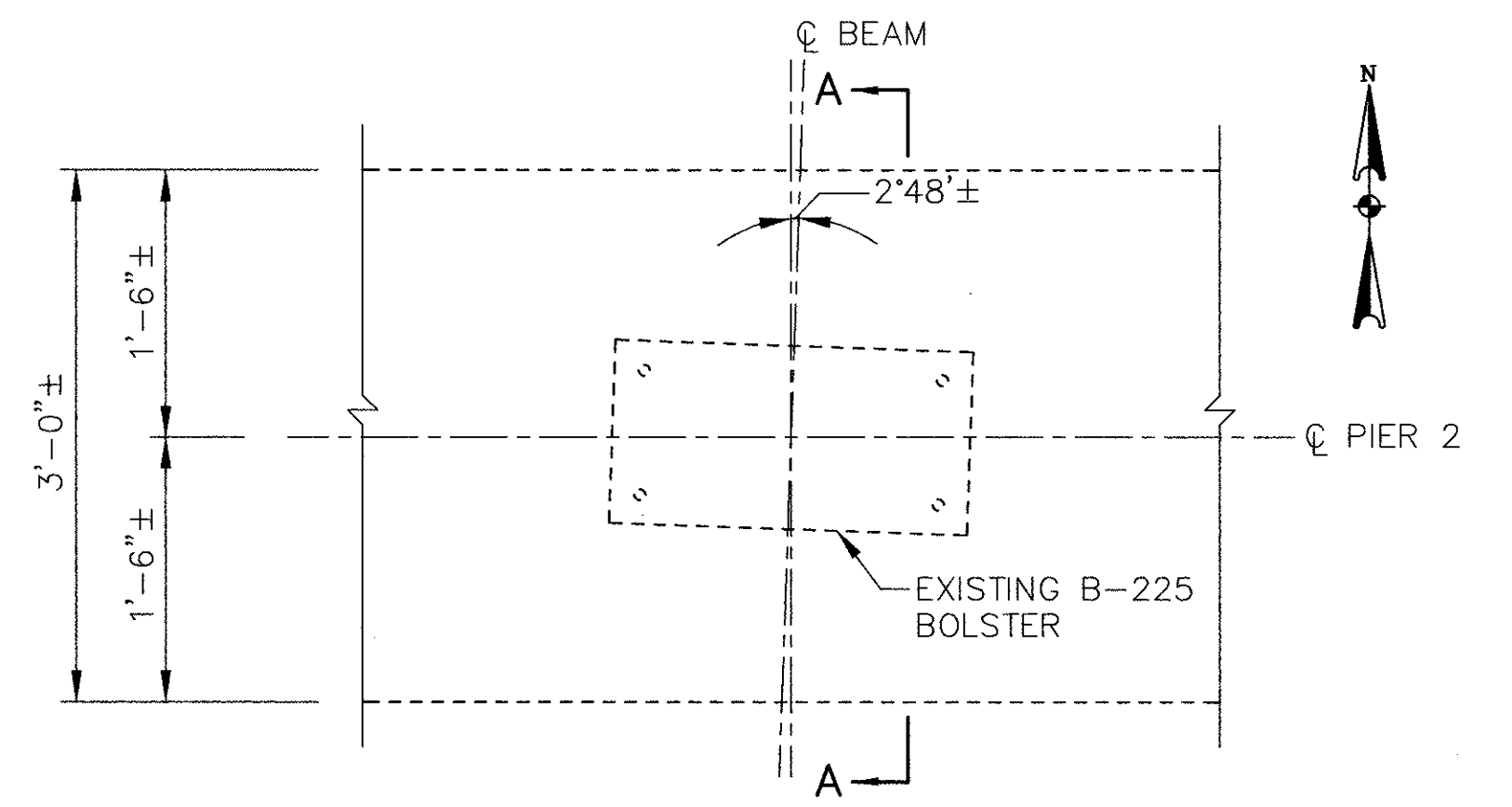
NOTES:
ALL PIER ROCKER AND BOLSTER BEARINGS ARE TO BE REFURBISHED AND RESET.

STEEL PLATE SHIMS SHALL BE A-36.

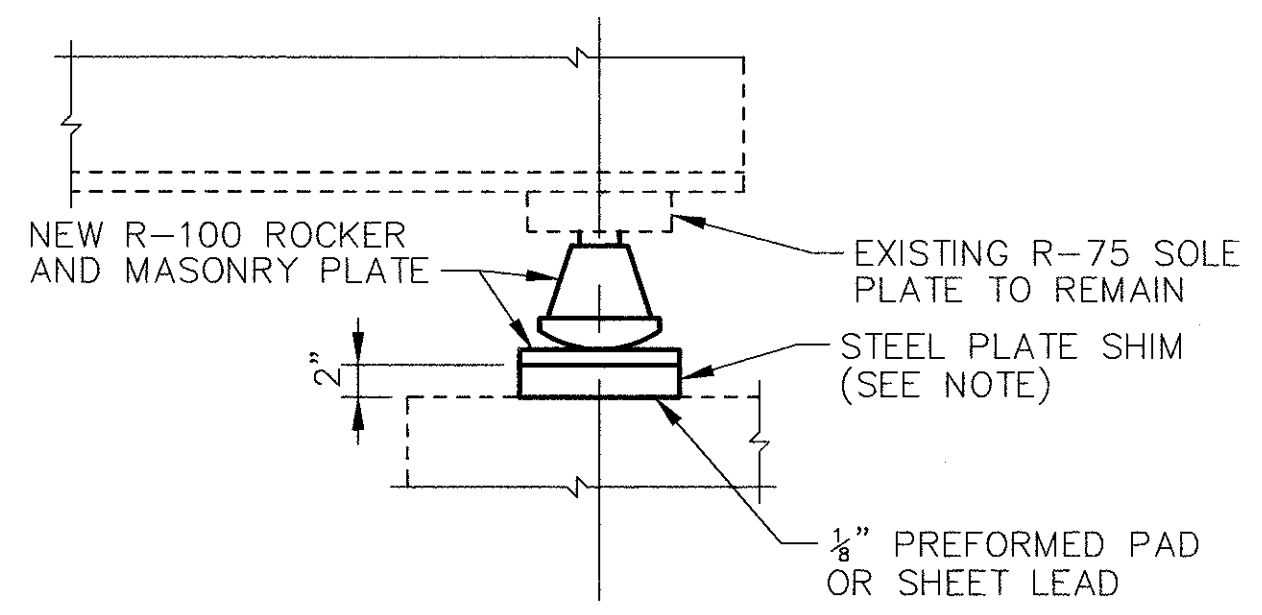


PIER ROCKER BEARING DETAIL

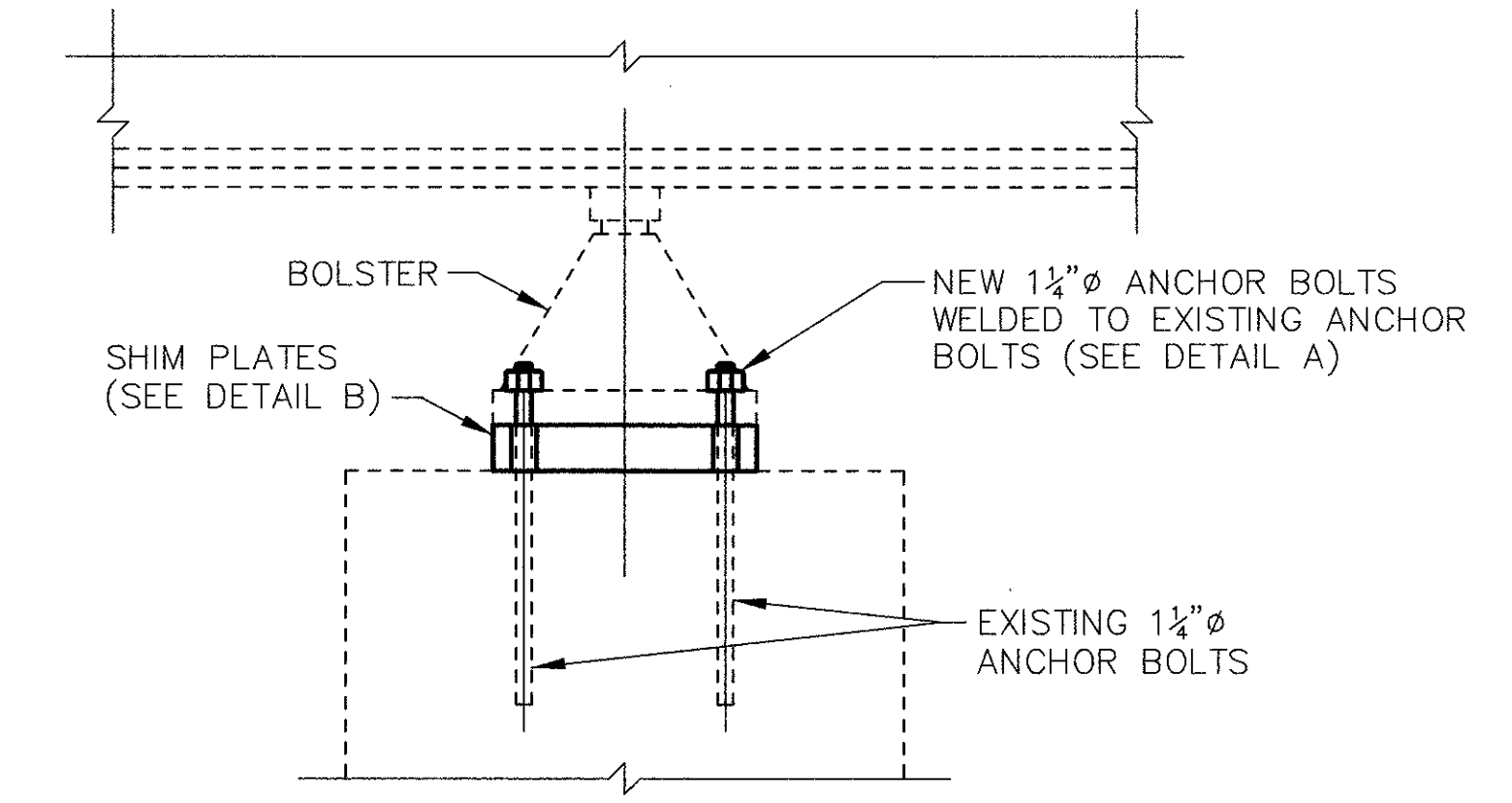
NOTE: STEEL PLATE SHIMS SHALL HAVE THE SAME BEARING AREA AS THE ROCKER MASONRY BEARING PLATE.



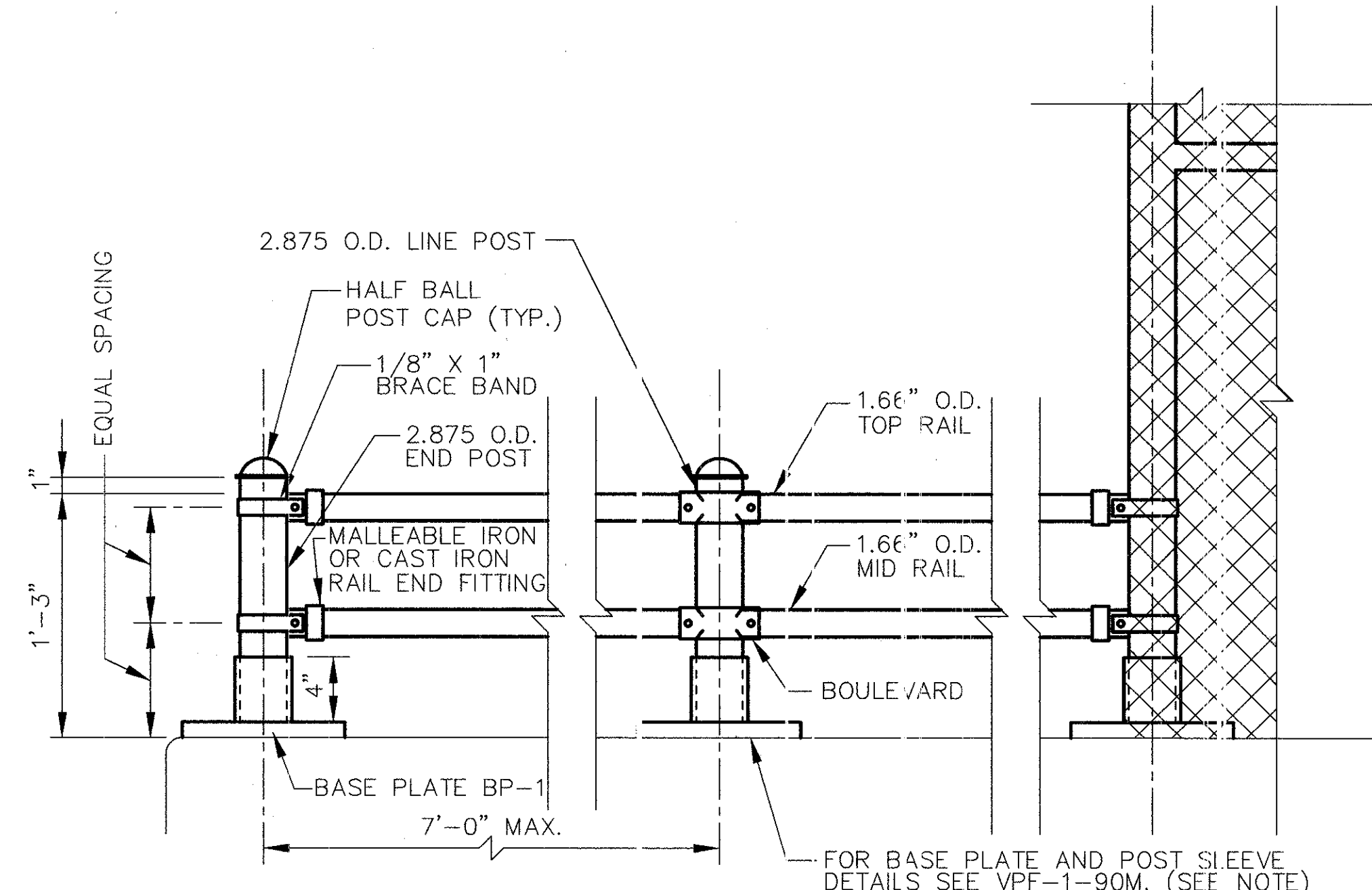
PIER BOLSTER BEARING DETAIL



ABUTMENT ROCKER BEARING DETAIL

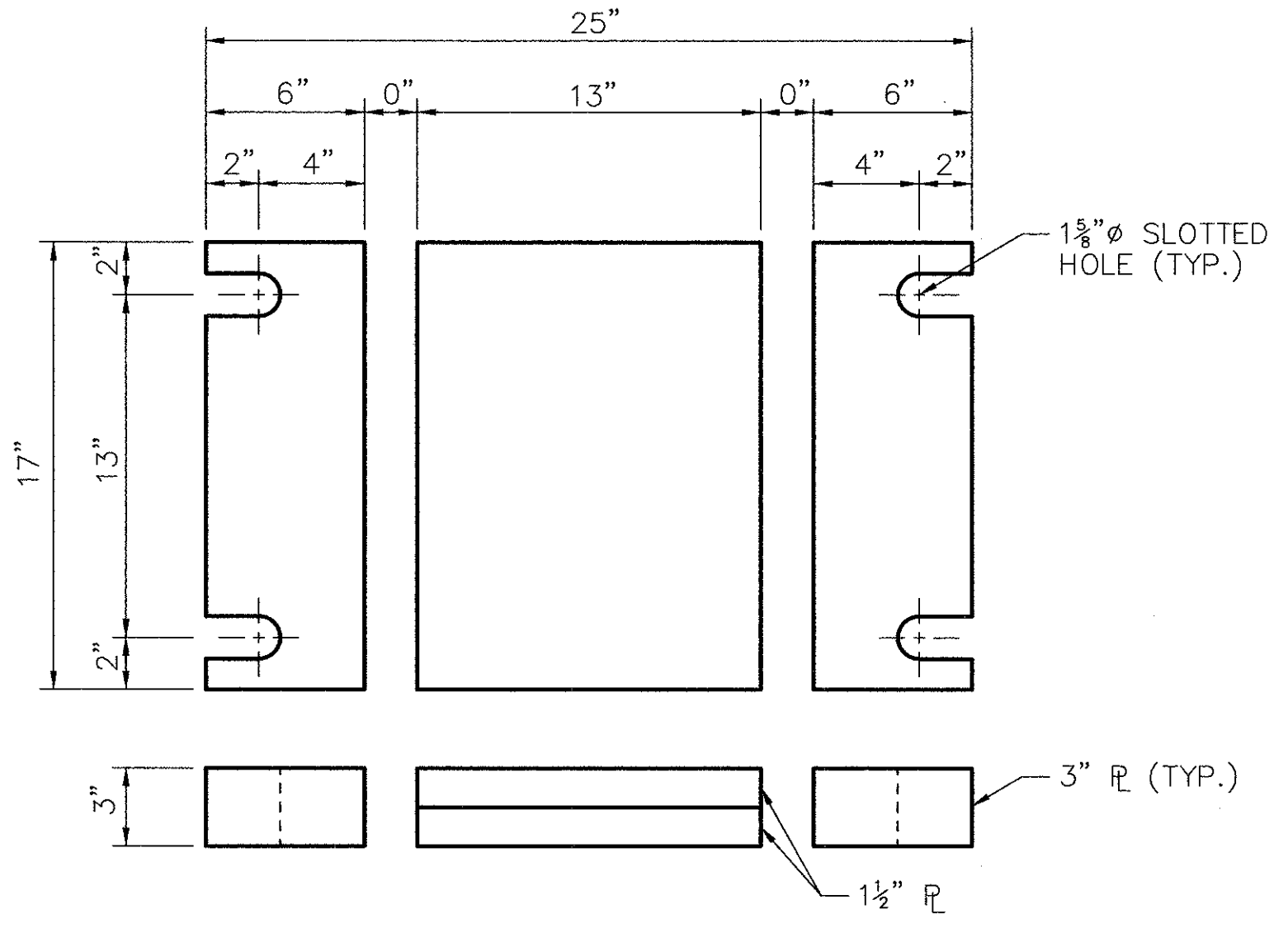


SECTION A-A



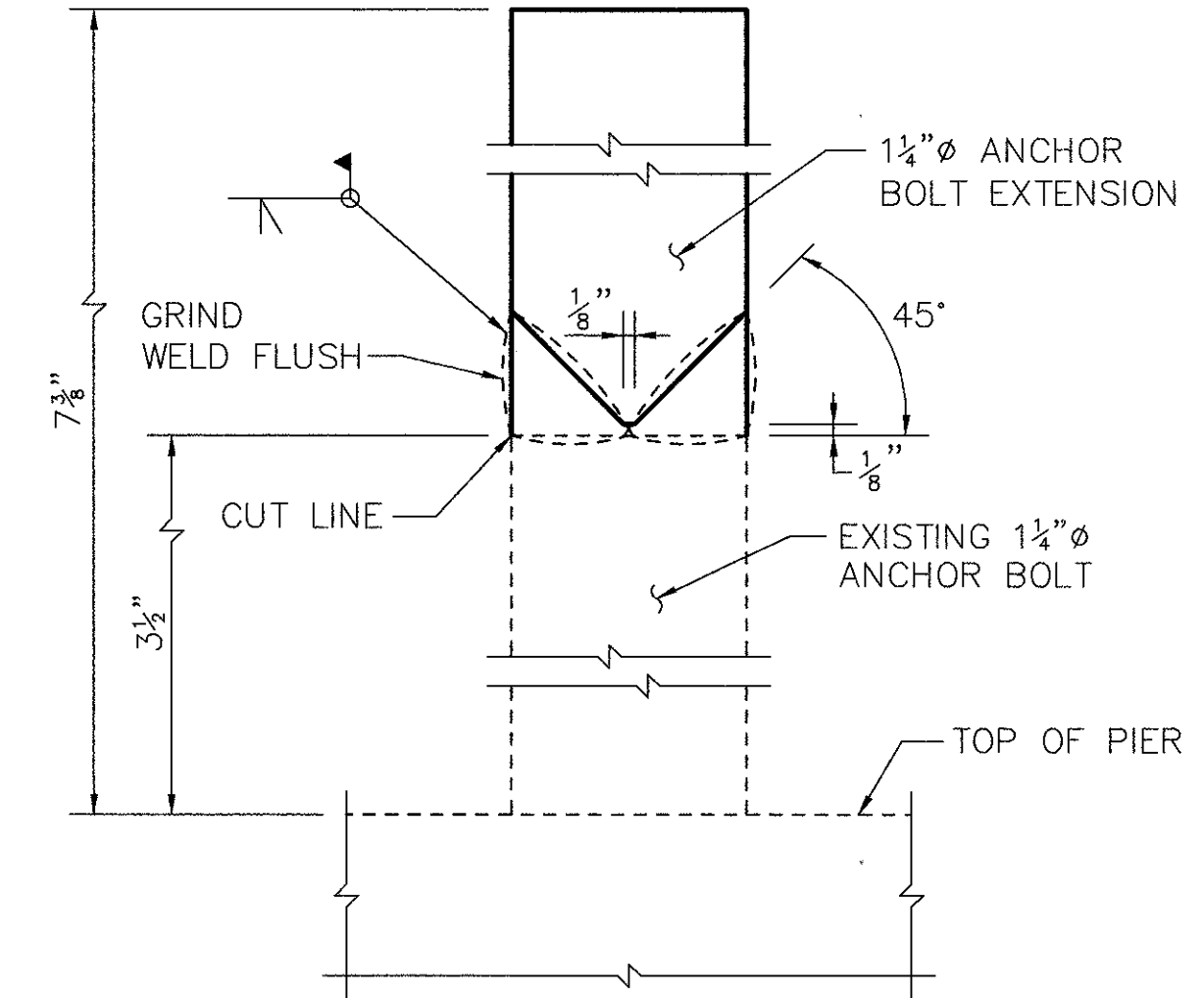
NOTES:
1. FOR ADDITIONAL DETAILS AND MATERIAL REQUIREMENTS SEE VPF-1-90M.
2. POST SLEEVE SHALL BE 0'-4" HIGH IN LIEU OF THE 1'-0" HIGH SHOWN IN VPF-1-90M.
3. SEE SHEETS 16 AND 28 OF 29 FOR POST SPACING.

HANDRAIL DETAIL



STEEL PLATE SHIM DETAIL B

(BOLSTER B-225)



DETAIL A