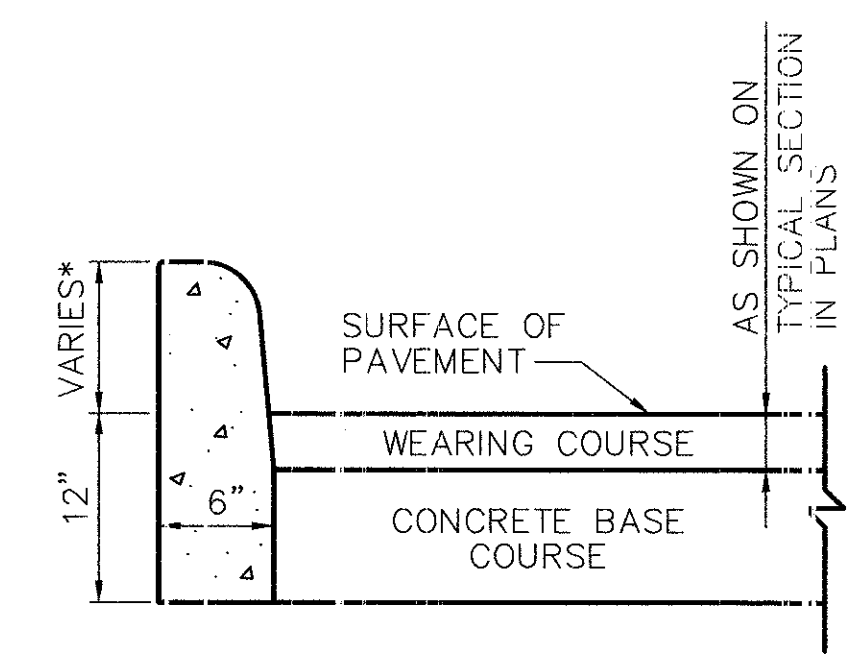


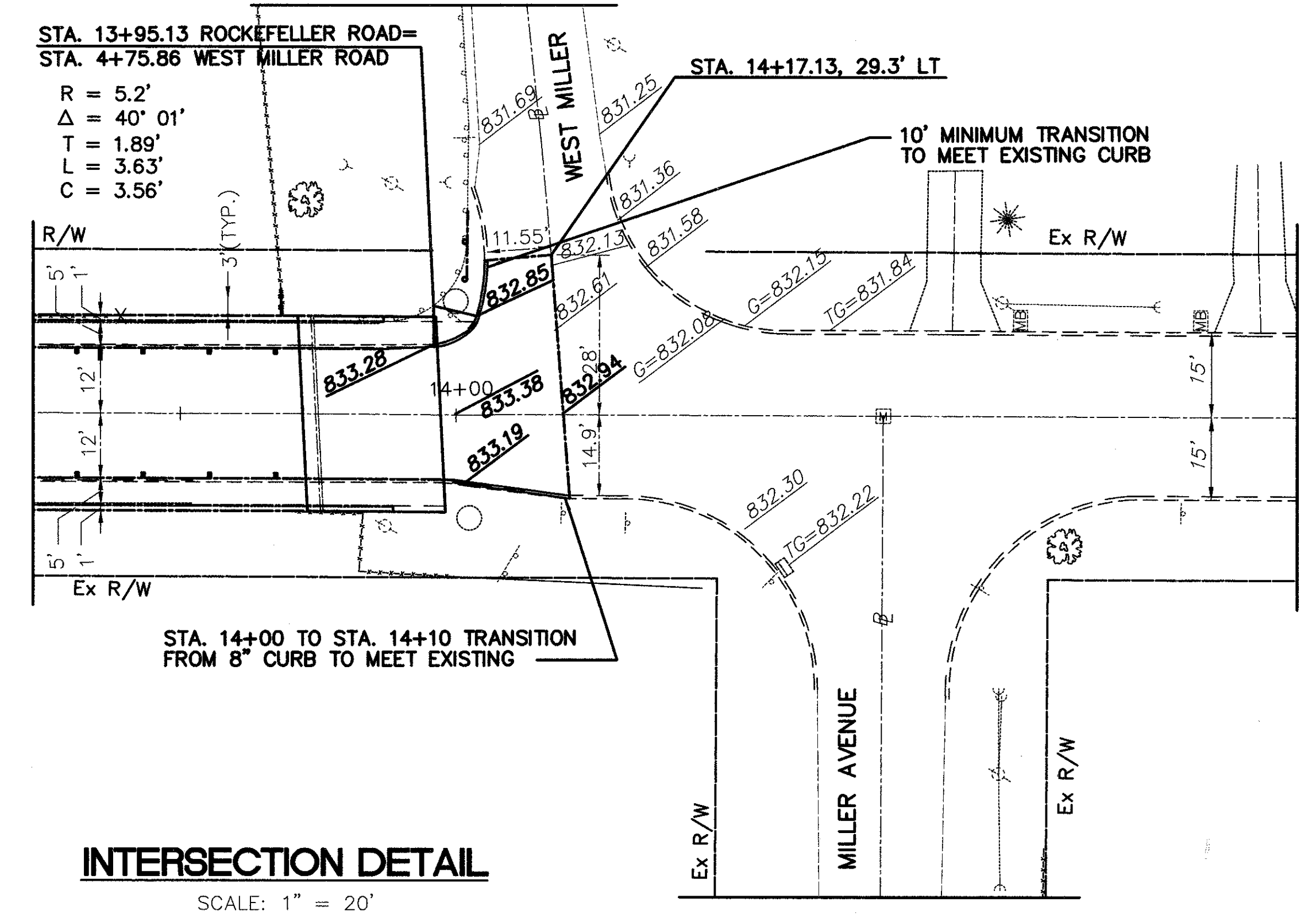
CENTERLINE ALIGNMENT
SCALE: 1" = 40'



CURB, TYPE 6, AS PER PLAN

1. VERTICAL SAWCUT THROUGH PAVEMENT ALONG BASE OF EXISTING CURB (AT GUTTER LINE)**
2. EXCAVATION BEHIND CURB LOCATION TO BE AS DIRECTED BY THE ENGINEER.**
3. A 10' TRANSITION FROM PROPOSED TO EXISTING CURB HEIGHT SHALL BE USED UNLESS OTHERWISE DIRECTED BY THE ENGINEER. ALL WORK SHALL BE ACCORDING TO THE APPLICABLE SPECIFICATIONS AND STANDARD DRAWING BP-5.1, EXCEPT AS NOTED.

* = 8" TO 6" NORTH OF BRIDGE
8" TO 0" SOUTH OF BRIDGE
** = TO BE INCLUDED WITH THE UNIT PRICE BID FOR ITEM 202, CURB REMOVED, AS PER PLAN



INTERSECTION DETAIL
SCALE: 1" = 20'