

FILE # 31

# LAKE COUNTY STATE HIGHWAY

PETITION NO. 723

ICH. 153-F

SECTION No. 1

## PAINESVILLE - WARREN ROAD

Elevations refer to Geological Survey Datum.

Total Fill = 4,169.6 Cu. yds.

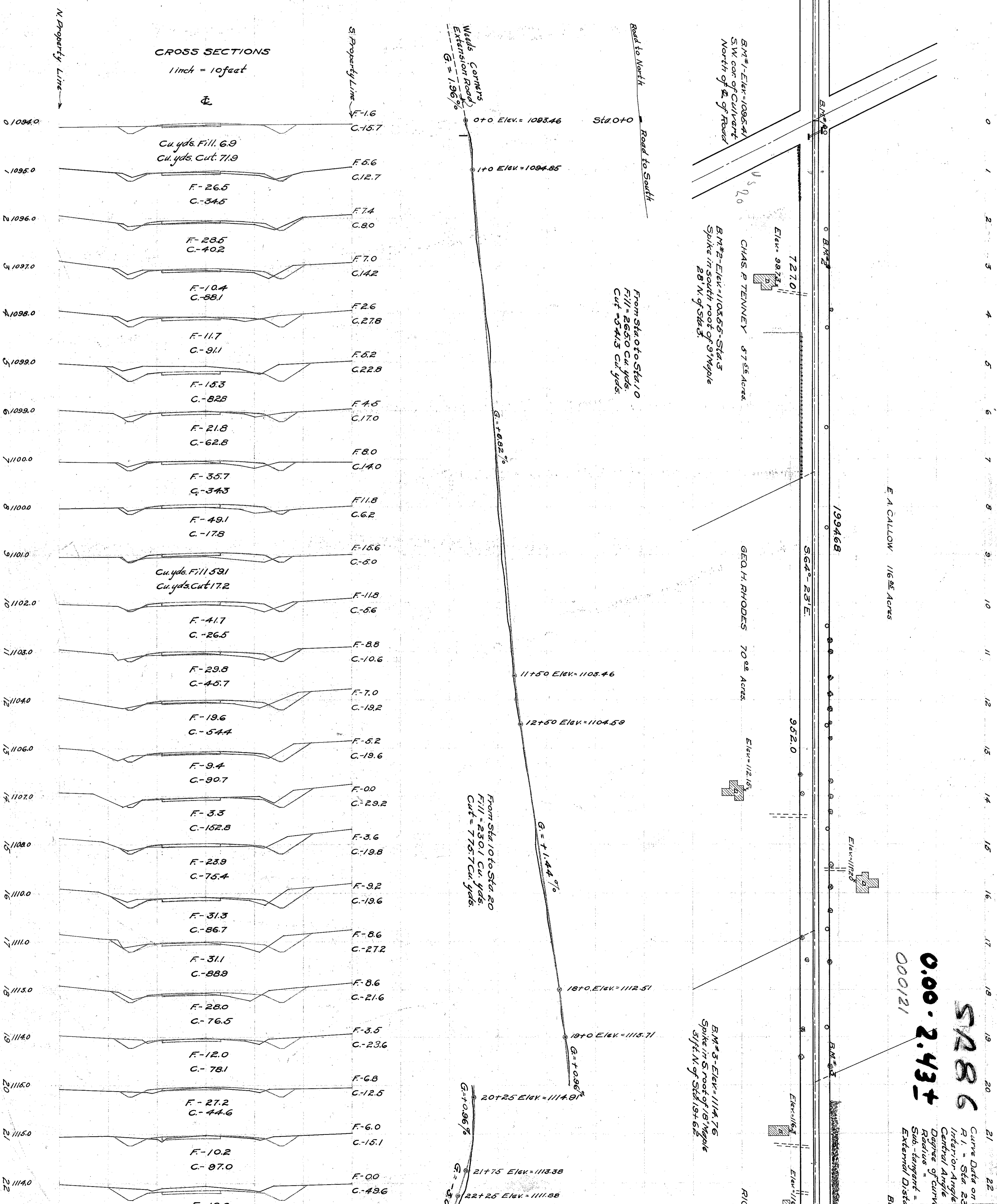
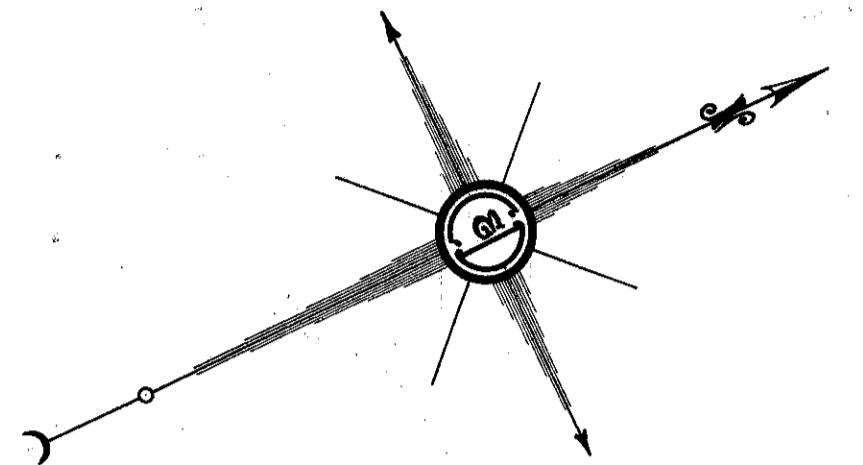
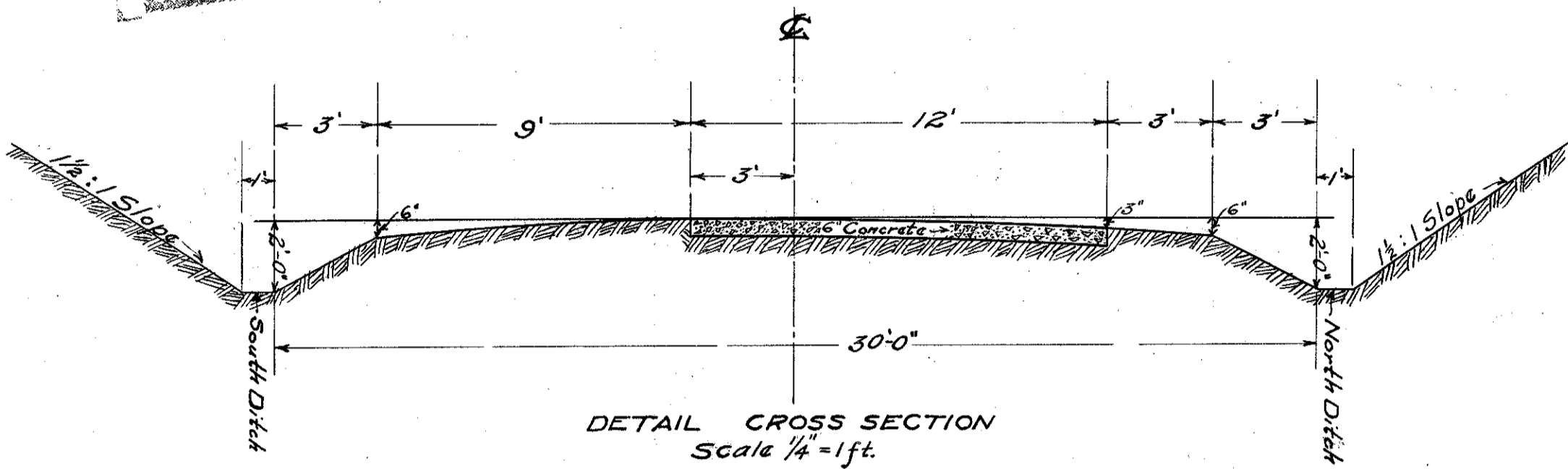
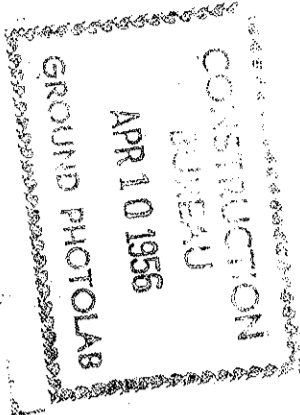
Total Cut = 10,644.5 Cu. yds.

August, 1913.

H. R. CUMINGS RESIDENT ENGINEER  
JOHN ELYEA ASST. ENGINEER  
A. A. CZERR DRAFTSMAN

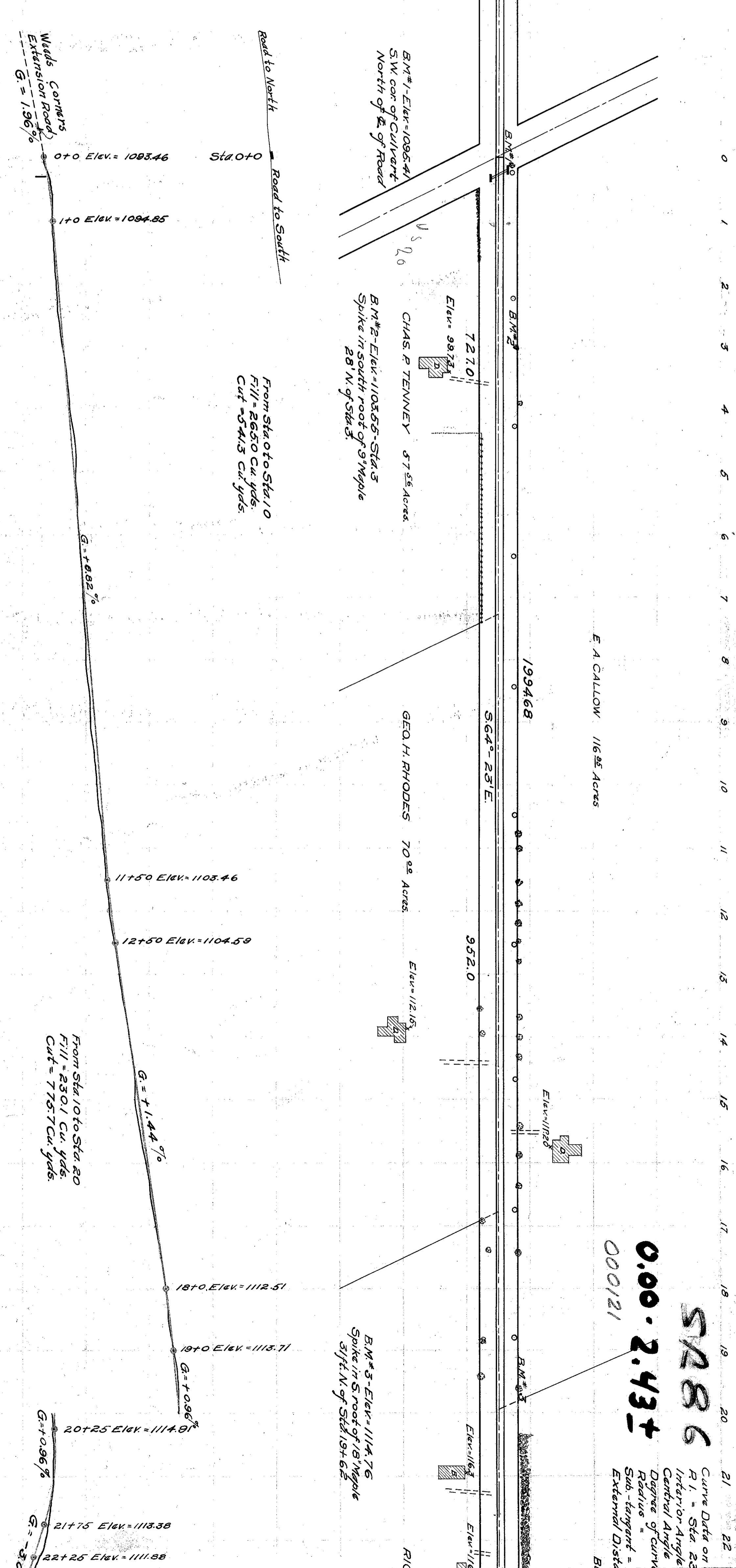
APPROVED

*James P. Marker*  
STATE HIGHWAY COMMISSIONER.



**CROSS SECTIONS**  
1 inch = 10 feet

Station	Left Side (Fills)	Right Side (Cuts)
0+0		
1+0		
2+0		
3+0		
4+0		
5+0		
6+0		
7+0		
8+0		
9+0		
10+0		
11+0		
12+0		
13+0		
14+0		
15+0		
16+0		
17+0		
18+0		
19+0		
20+0		
21+0		
22+0		



Curve Data on P. 1 - Sta. 23

Intersection Angle

Central Angle

Degree of Curve

Radius =

Sub-tangent =

External Dist =

0.00 - 2.43 +

000121

52286