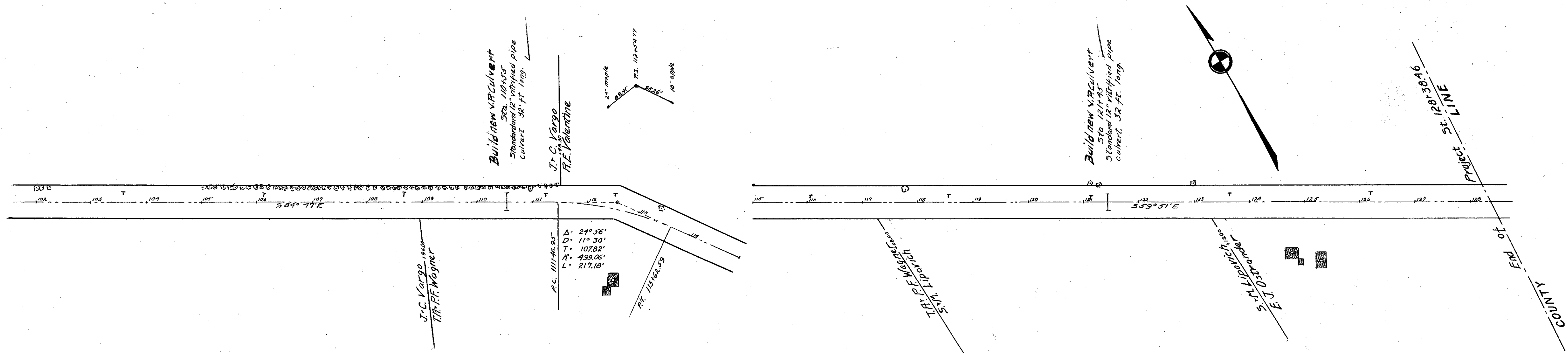


ICH 153 SEC. H  
LAKE COUNTY



Left			Right		
Pav.	Width	Station	Grade	Width	Pav.
1155.48	8.00	110+96.95	1155.65	8.00	1155.48
1155.56	8.00	111+0	1155.71	8.15	1155.54
1156.82	8.00	111+46.95	1156.59	10.5	1156.42
1156.90	8.00	111+50	1156.64	10.60	1156.47
1158.16	8.00	111+96.95	1157.53	12.60	1157.36
1159.14	8.00	112+50	1158.51	12.60	1158.34
1159.98	8.00	113+0	1159.35	12.60	1159.18
1160.14	8.00	113+12.59	1159.51	12.60	1159.34
1160.30	8.00	113+50	1160.01	11.90	1159.84
1160.36	8.00	113+62.59	1160.13	10.50	1159.96
1160.39	8.00	114+0	1160.50	8.50	1160.33
1160.41	8.00	114+12.59	1160.58	8.00	1160.41
110	59 yds extra Pavement				

B.M. Sta. 110+99  
30m on side of  
14" 30' L.E.  
Elev. 1138.55

B.M. Sta. 117+79  
30m on side of  
14" 30' L.E.  
Elev. 1163.30

B.M. Sta. 123+00  
30m on side of  
14" 30' L.E.  
Elev. 1165.50

B.M. Sta. 130+00  
30m on side of  
14" 30' L.E.  
Elev. 1167.30

