

10 11 12 13 14 15 16 17 18 19 20 21 22 23 24 25 26 27 28 29 30 31 32 33 34 35 36 37 38 39 40 41 42 43 44 45

B.M. 4 Elevation 925.23  
Spike in roof 24" Oak  
South side of road.  
Sta. 14+89

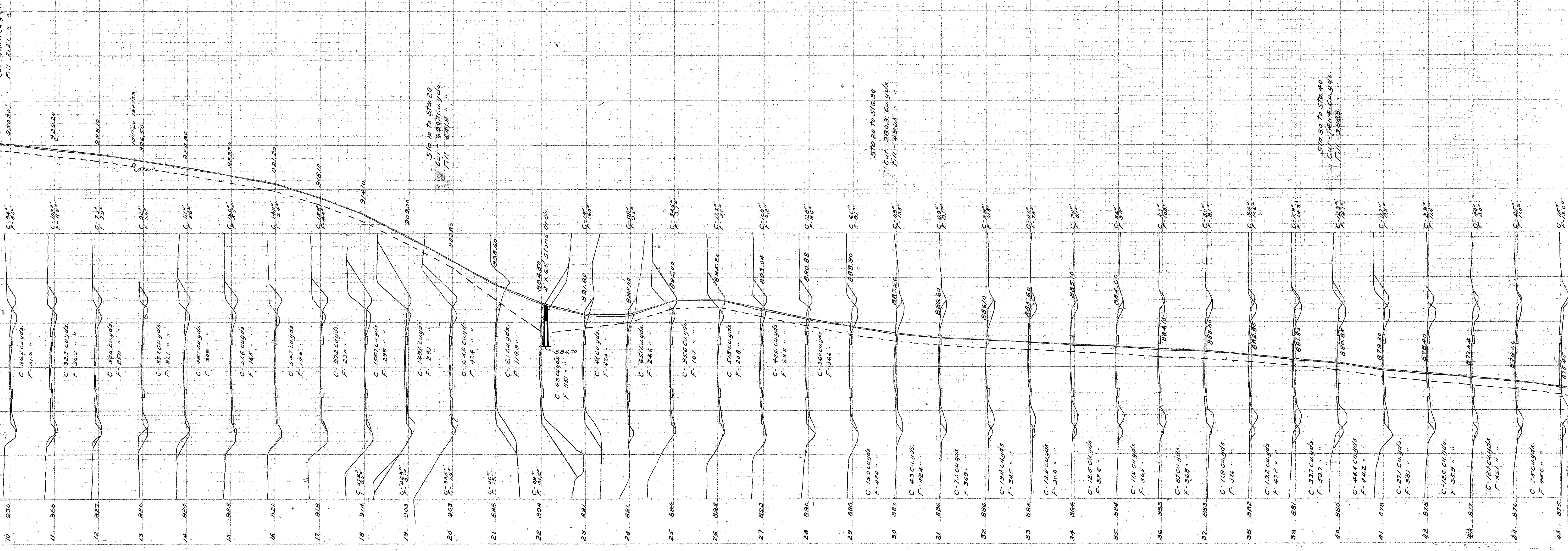
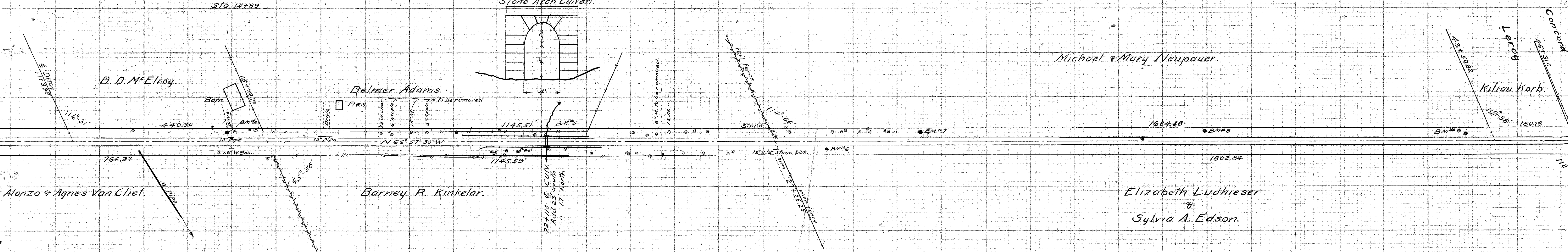
B.M. 5 Elevation 894.63  
Drill hole in SE corner of  
South headwall. Sta 22+11.  
Stone Arch Culvert.

B.M. 6 Elevation 890.98  
Top of boulder north  
side of road Sta 28+40.

B.M. 7 Elevation 898.00  
Spike in 10" Maple South  
side of road Sta 30+53.

B.M. 8 Elevation 885.03  
Top boulder South side  
of road Sta 36+95

B.M. 9 Elevation 877.85  
Spike in 6" Elm south  
side of road Sta 42+80



Cut - 450.9 cu yds.  
Fill - 218.7 "

Sta 18 to Sta 20  
Cut - 890.7 cu yds.  
Fill - 241.8 "

Sta 20 to Sta 30  
Cut - 380.3 cu yds.  
Fill - 496.5 "

Sta 30 to Sta 40  
Cut - 1114.4 cu yds.  
Fill - 388.8 "

10 930  
11 928  
12 927  
13 926  
14 924  
15 923  
16 921  
17 918  
18 914  
19 908  
20 903  
21 898  
22 894  
23 891  
24 891  
25 894  
26 895  
27 892  
28 890  
29 888  
30 887  
31 886  
32 886  
33 885  
34 884  
35 884  
36 883  
37 883  
38 882  
39 881  
40 880  
41 879  
42 878  
43 877  
44 876  
45 875