

MICROFILMED
NOV 3 1987

LAKE COUNTY METROPOLITAN
PARK DISTRICT
VOL. 747, PG. 99

WARREN W. & DOROTHY BEMAN
VOL. 835, PG. 597

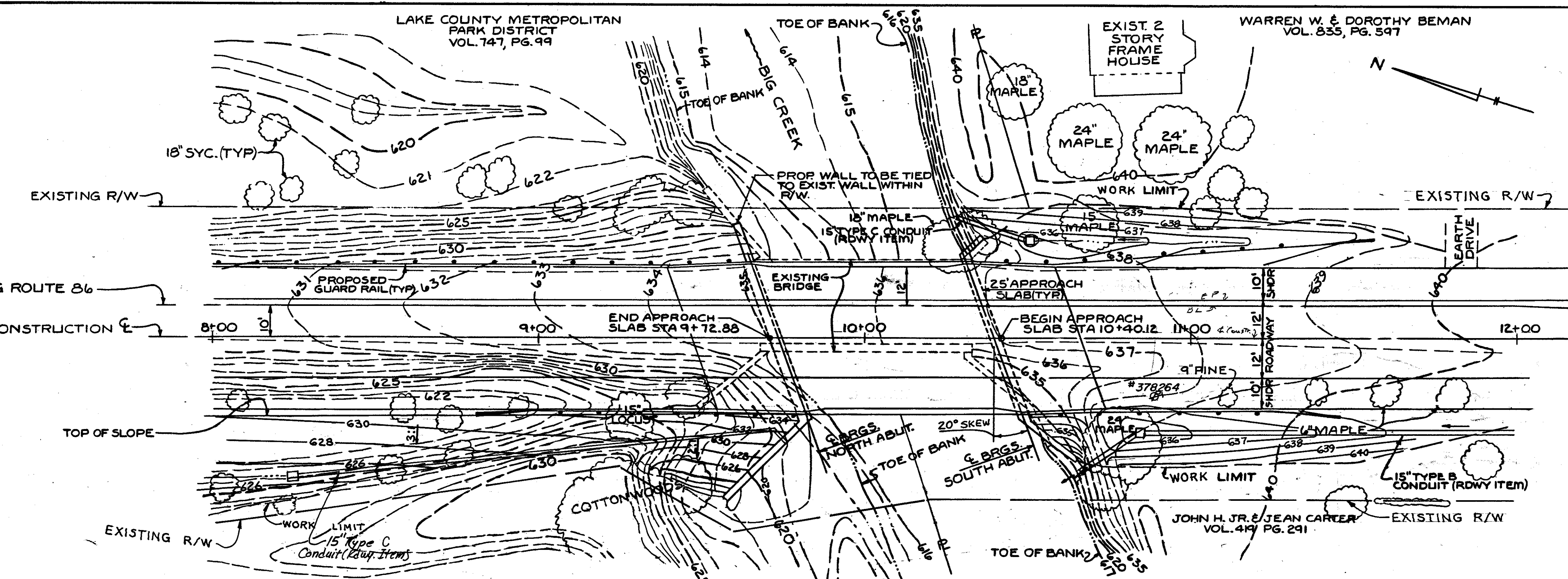
FED. REGION	STATE	PROJECT
5	OHIO	

27
36

LAKE COUNTY
LAK-86-2.23

SURVEY R EXISTING ROUTE 86

PROPOSED CONSTRUCTION E



NOTE:
EARTHWORK LIMITS SHOWN ARE APPROXIMATE. ACTUAL SLOPES SHALL CONFORM TO PLAN CROSS-SECTIONS.

RITA WYMAN
VOL. 648, PG. 502

PLAN

B.M. ELEV. 639.36
PK. IN PP #378264 SOUTH OF BRIDGE

EXISTING BRIDGE DATA

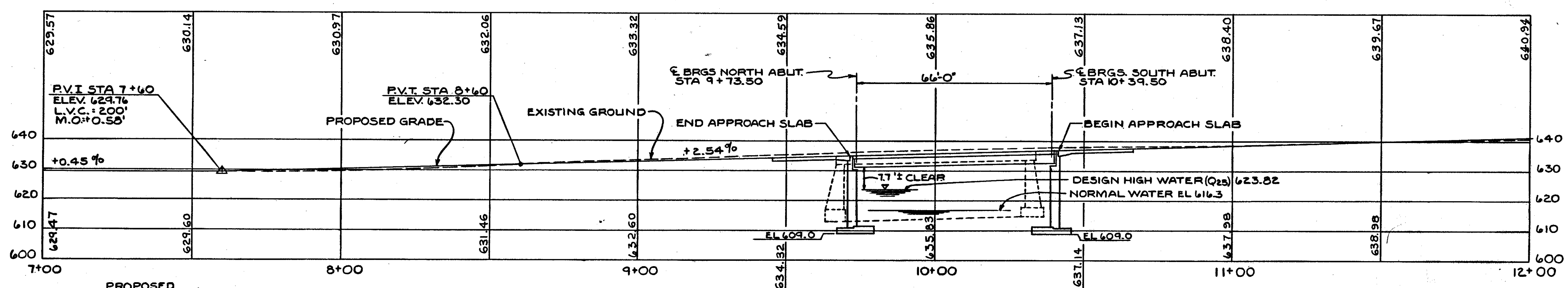
TYPE: SINGLE SPAN CONCRETE THRU GIRDER WITH CONCRETE DECK AND VERTICAL WALL ABUTMENTS.
SPAN: 60'-0" CLEAR SPAN.
ROADWAY: 24'-0" BETWEEN GIRDERS.
SKEW: NONE
DESIGN LOADING: T-15
DATE BUILT: 1924

HYDRAULIC DATA

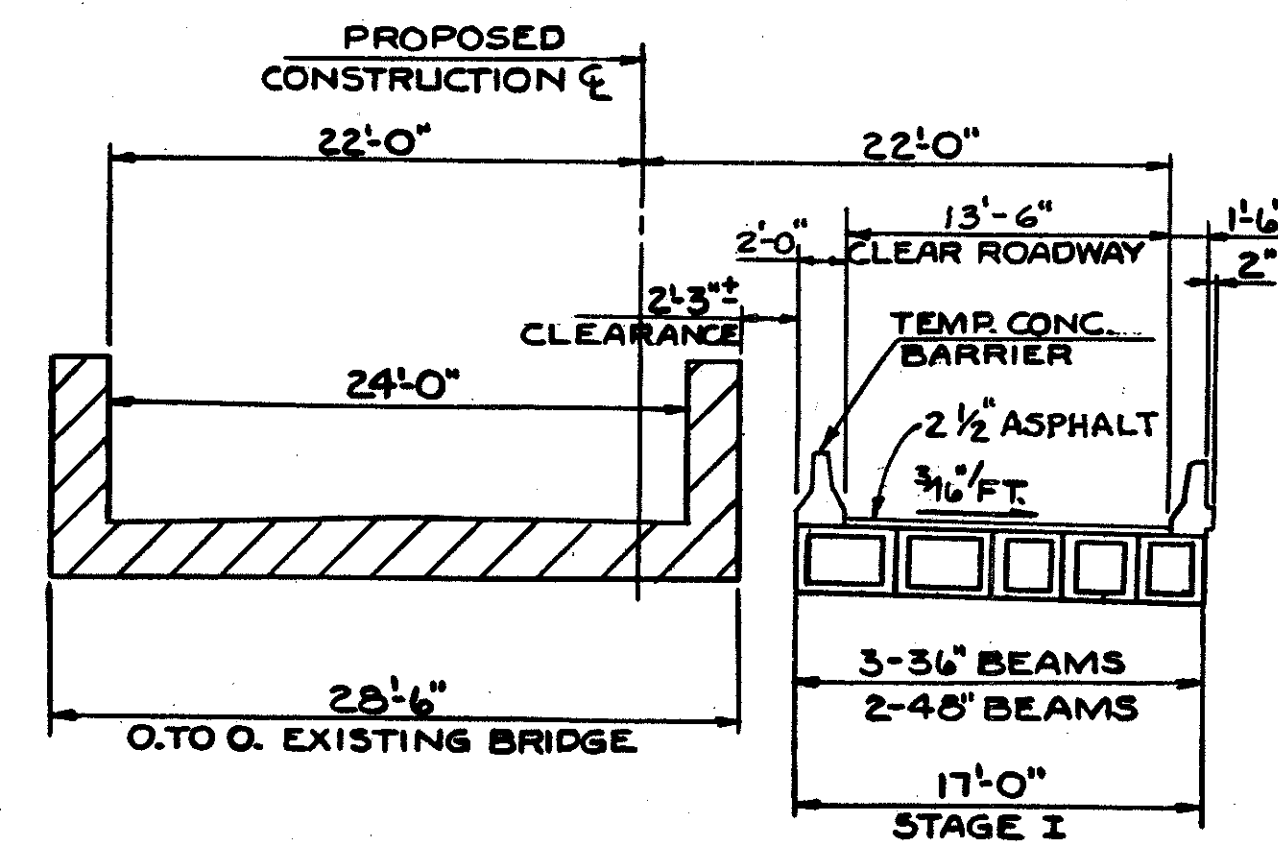
DRAINAGE AREA: 36.9 SQ. MI.
Q₂₅: 4419 CFS Q₁₀₀: 5863 CFS
V₂₅: 7.1 FPS V₁₀₀: 8.5 FPS
EL.: 623.82 EL.: 625.02

PROPOSED STRUCTURE

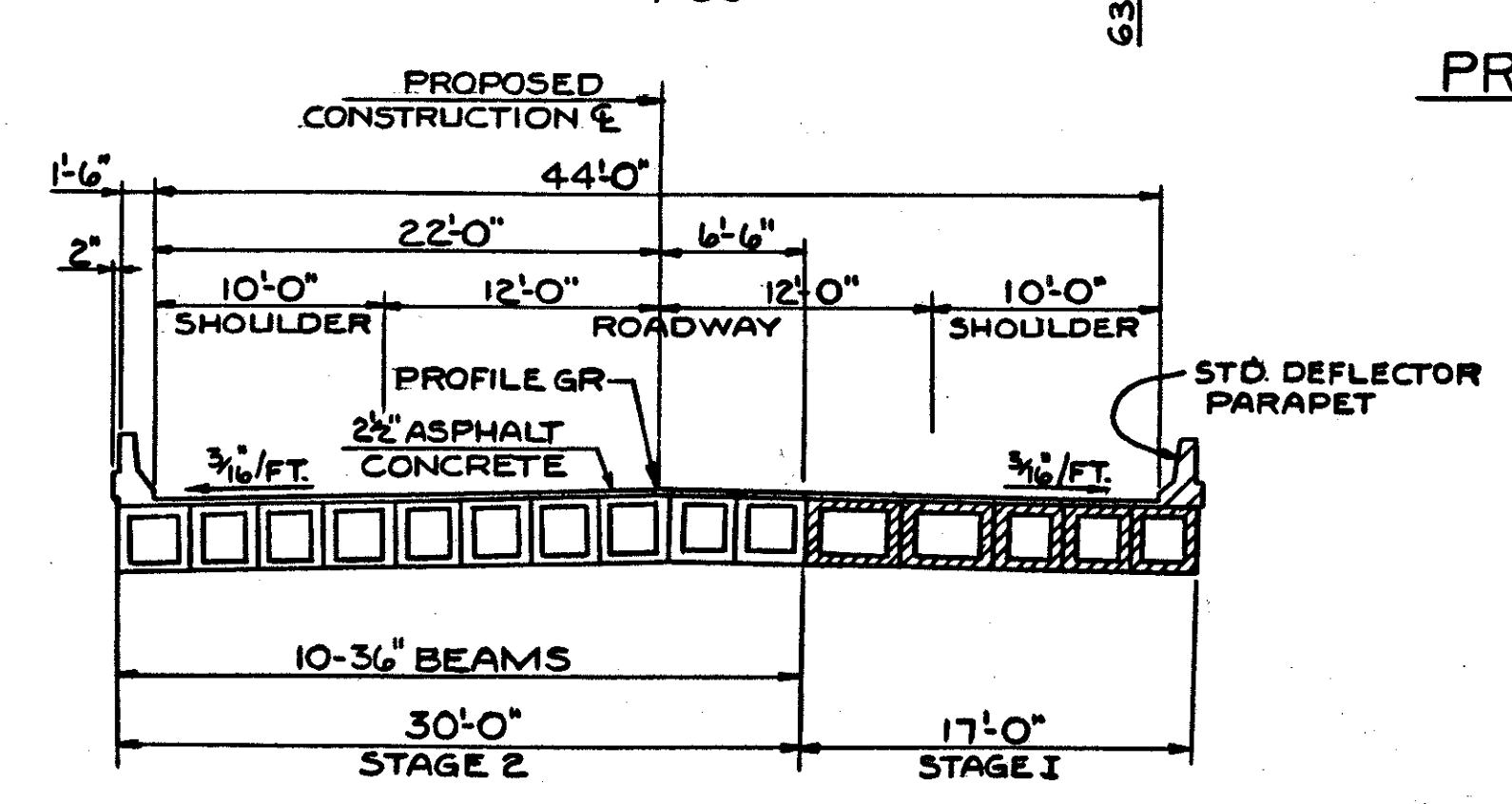
TYPE: SINGLE SPAN PRESTRESSED CONCRETE BOX BEAM DECK ON VERTICAL WALL ABUTMENTS (BUILT IN STAGES)
SPAN: 66'-0" C. TO C. BRGS.
ROADWAY: 44'-0" BETWEEN PARAPETS.
SKEW: 20°00'00" R.F.
WEARING SURFACE: 2 1/2" ASPHALT CONCRETE AND VARIES.
LOADING: H520-44 AND THE ALTERNATE MILITARY LOADING.
ALIGNMENT: TANGENT
APPROACH SLAB: AS-1-81, 25'-0" LONG
SUPERELEVATION: NONE
TRAFFIC: 1980 ADT=1580 1980 ADTT=100
2000 ADT=2210 2000 ADTT=140



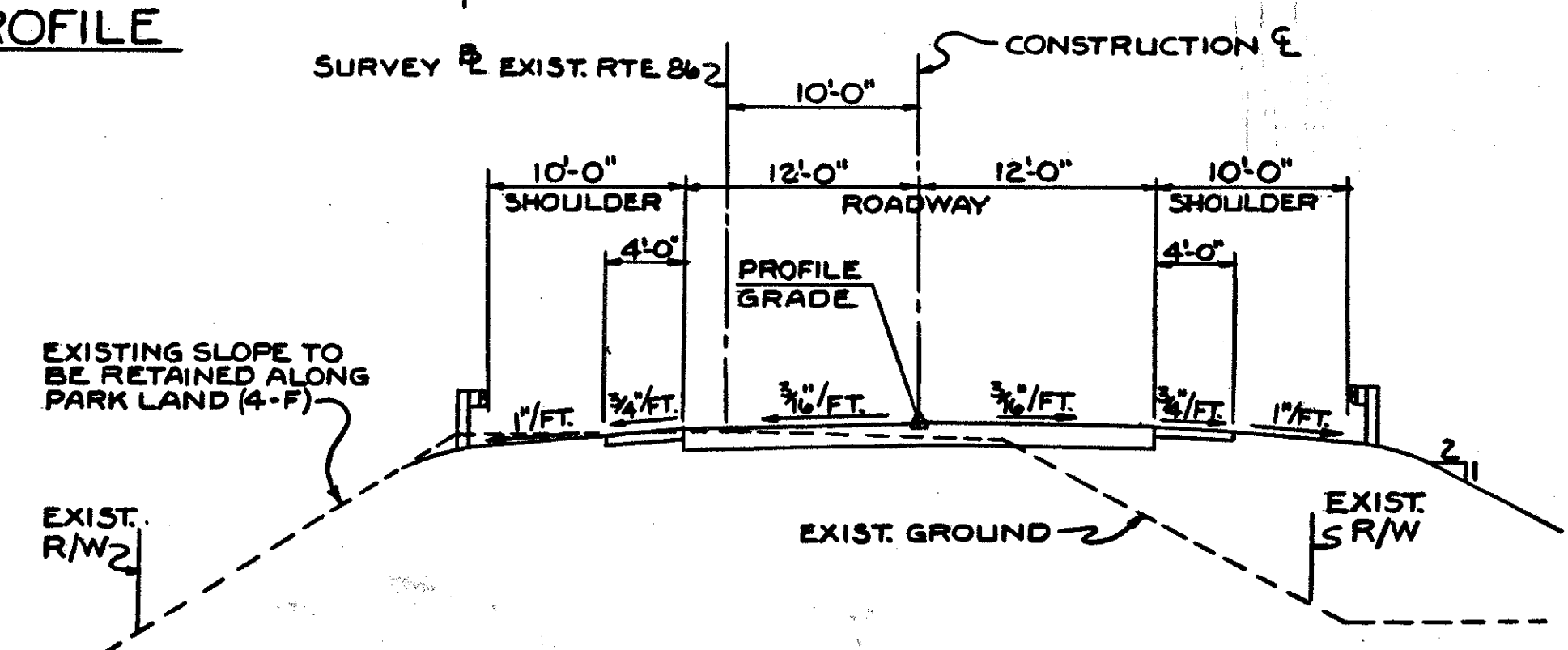
PROFILE



STAGE I



STAGE II



TYPICAL APPROACH SECTION

NOTE: TRAFFIC TO BE CARRIED BY EXISTING BRIDGE DURING CONSTRUCTION OF ABUTMENTS AND SUPERSTRUCTURE OF STAGE I.

NOTE: ONE-LANE ONE-WAY TRAFFIC ON STAGE I WILL BE MAINTAINED USING TEMPORARY SIGNALIZATION DURING CONSTRUCTION OF ABUTMENTS AND SUPERSTRUCTURE OF STAGE II.

CAPITOL ENGINEERING ASSOCIATES CONSULTING CIVIL ENGINEERS PAINESVILLE, OHIO					
SITE PLAN					
BRIDGE NO. LAK-86-0229 OVER BIG CREEK					
LAKE COUNTY			STA 9 + 72.88 TO STA 10 + 40.12		
PRESENT TOPOGRAPHY		PROPOSED WORK			
SURVEYED	DRAWN	DESIGNED	DRAWN	CHECKED	REVISIONS
OCT. 1979	NOV. 1979	TAP	DPR	NE	

Rev. 9-18-84