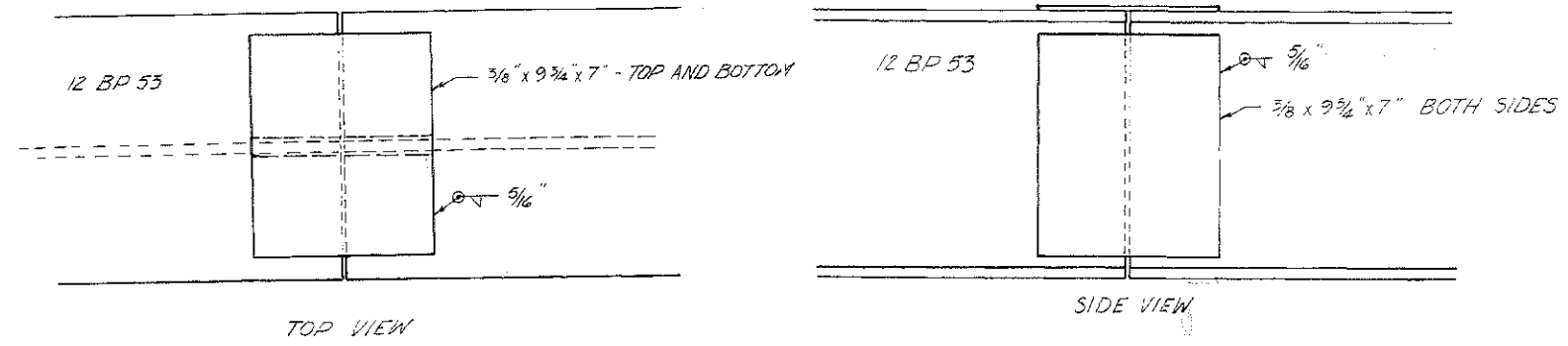


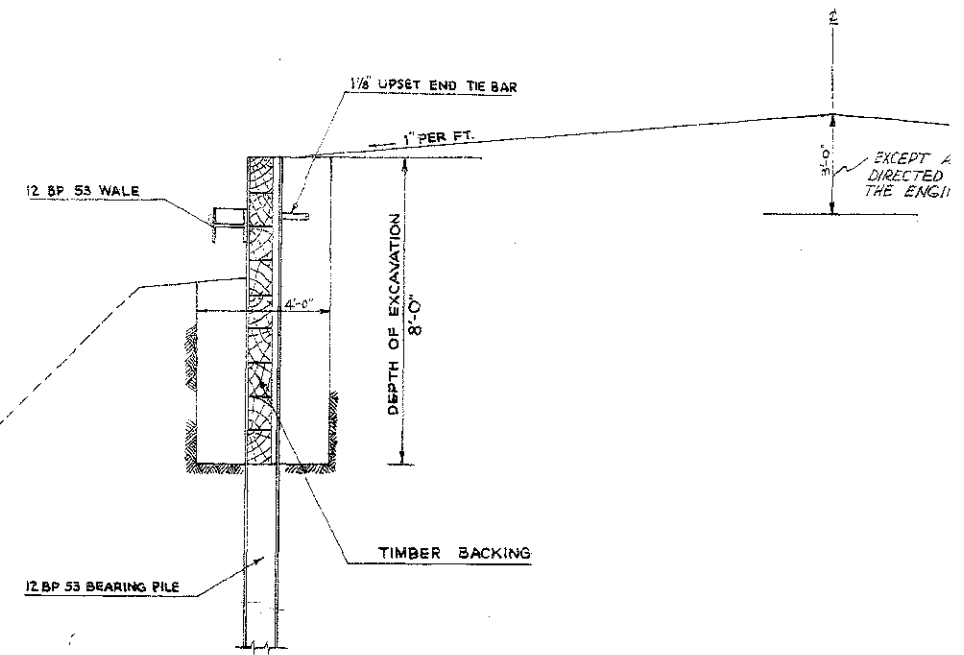
This is an image reproduction.
The scales as shown have been distorted.

CALCULATED
CHECKED



WALER SPLICE DETAIL

The walers shall be continuous units as illustrated in the plan and profile sheets. This shall be accomplished by splicing the steel sections as directed by the Engineer. These splices shall be butt welded whenever possible. Where this is not possible, as determined by the Engineer, they shall be spliced as illustrated in the detail. The cost of all material and labor necessary to complete these splices shall be included in the unit price bid for item Structural Steel, Misc.: Retaining Wall Steel, HP 12x53 Waler.



SECTION F-F
SCALE 3/8" = 1'-0"

State of Ohio
Department of Highways
Testing Laboratory

LOG OF BORING

Date Started 5-22-69 Sampler Type SS Dia 1 3/8" Water Elev _____
Date Completed 5-23-69 Casing Length 10.0' Dia 3 1/2" Project Identification: LAK
LAK-86-1.60

Boring No. 5 Station & Offset 24+50, 8' Lt. Surface Elev 666.9'

Elev	Depth	Std Pen (N)	Sec. H.	Loss	Description	Field No.	Lab Nos.	Physical Characteristics										SMTL Class		
								% Agg	% S	% F.S.	% Silt	% Clay	LL	PI	WC					
666.9	0				.5' of Blacktop and .5' of Concrete															
661.9	4	4/6			Brown Clayey Sand With Some Gravel	1	91302	26	24	17	16	17	24	18	14	A-2-4				
657.9	8			TOP OF ROCK																
	12		4.8	0.2	Shale, gray, firm, argillaceous, micaceous, with a few thin scattered clay seams. Core loss 1%															
	14																			
	16																			
	18		5.0	0.0																
	20																			
	22																			
	24		5.0	0.0																
641.9	26																			
	28																			
	30																			
	32																			
	34																			
	36																			

BOTTOM OF BORING

Particle Sizes Agg > 2.00mm, Coarse Sand = 2.00 - 0.42mm, Fine Sand = 0.42 - 0.074mm, Silt = 0.074 - 0.005mm, Clay = < 0.005mm

Form TE-151

Structural Details

LAK-86-1.75

13
13

I:\PROJECTS\LAK86\dgn\scd03.dgn 16-APR-2002 9:43AM bblayney