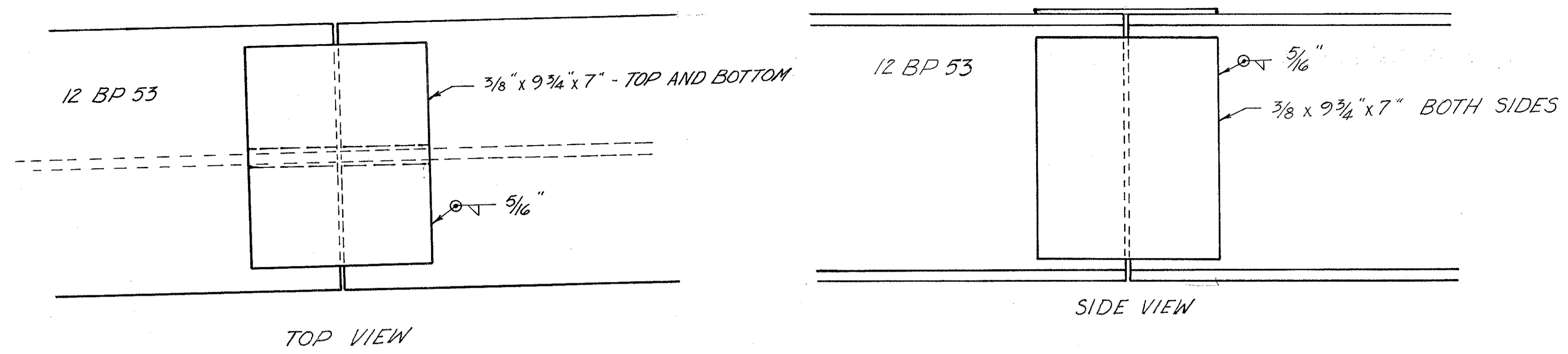
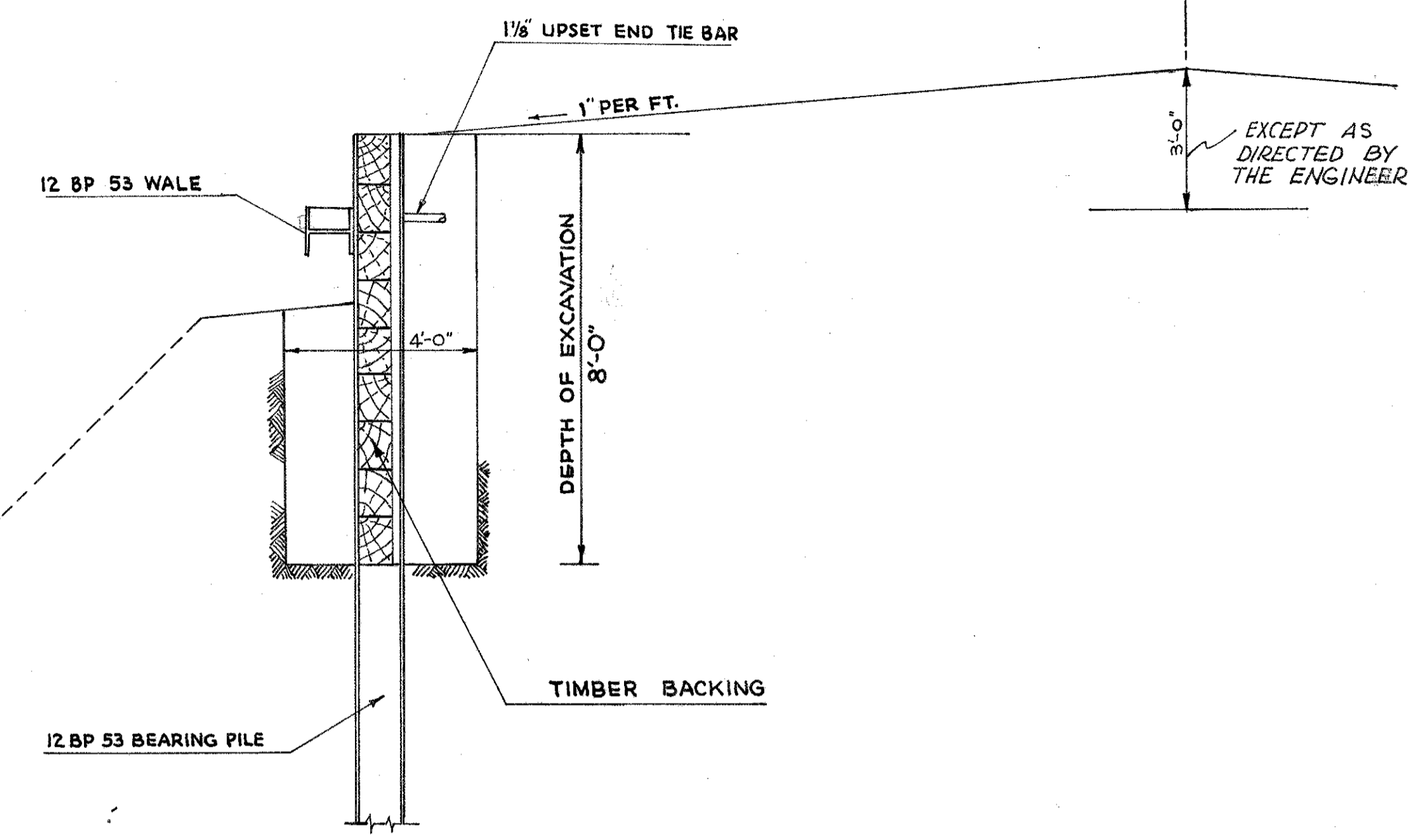


LAKE COUNTY
LAK-86-(1.60)(1.71)

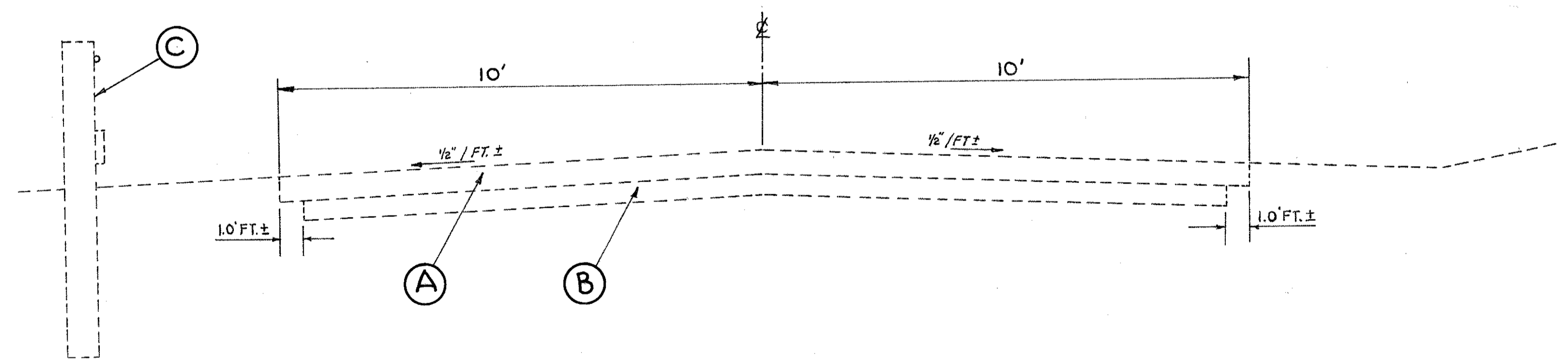
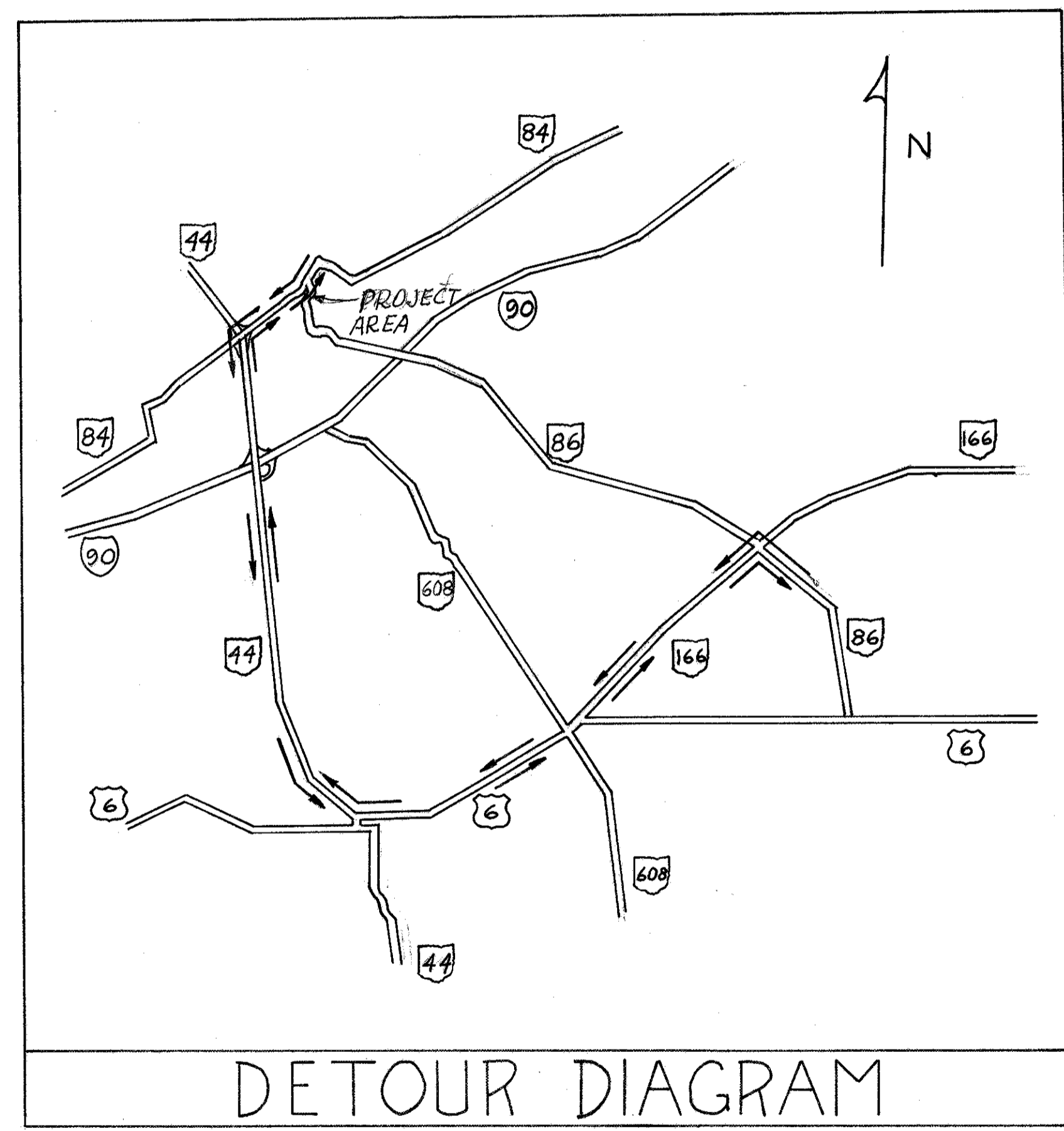


WALER SPLICE DETAIL

The walers shall be continuous units as illustrated in the plan and profile sheets. This shall be accomplished by splicing the steel sections as directed by the Engineer. These splices shall be butt welded whenever possible. Where this is not possible, as determined by the Engineer, they shall be spliced as illustrated in the detail. The cost of all material and labor necessary to complete these splices shall be included in the unit price bid for item 513 - Structural Steel, As Per Plan.



SECTION F-F
SCALE 3/8" = 1'-0"



- (A) EXISTING 6" ASPHALTIC CONCRETE
- (B) EXISTING 5" CONCRETE BASE
- (C) EXISTING PLANK & CABLE GUARD RAIL

SCALE 1/2" = 1'-0"

EXISTING TYPICAL SECTION