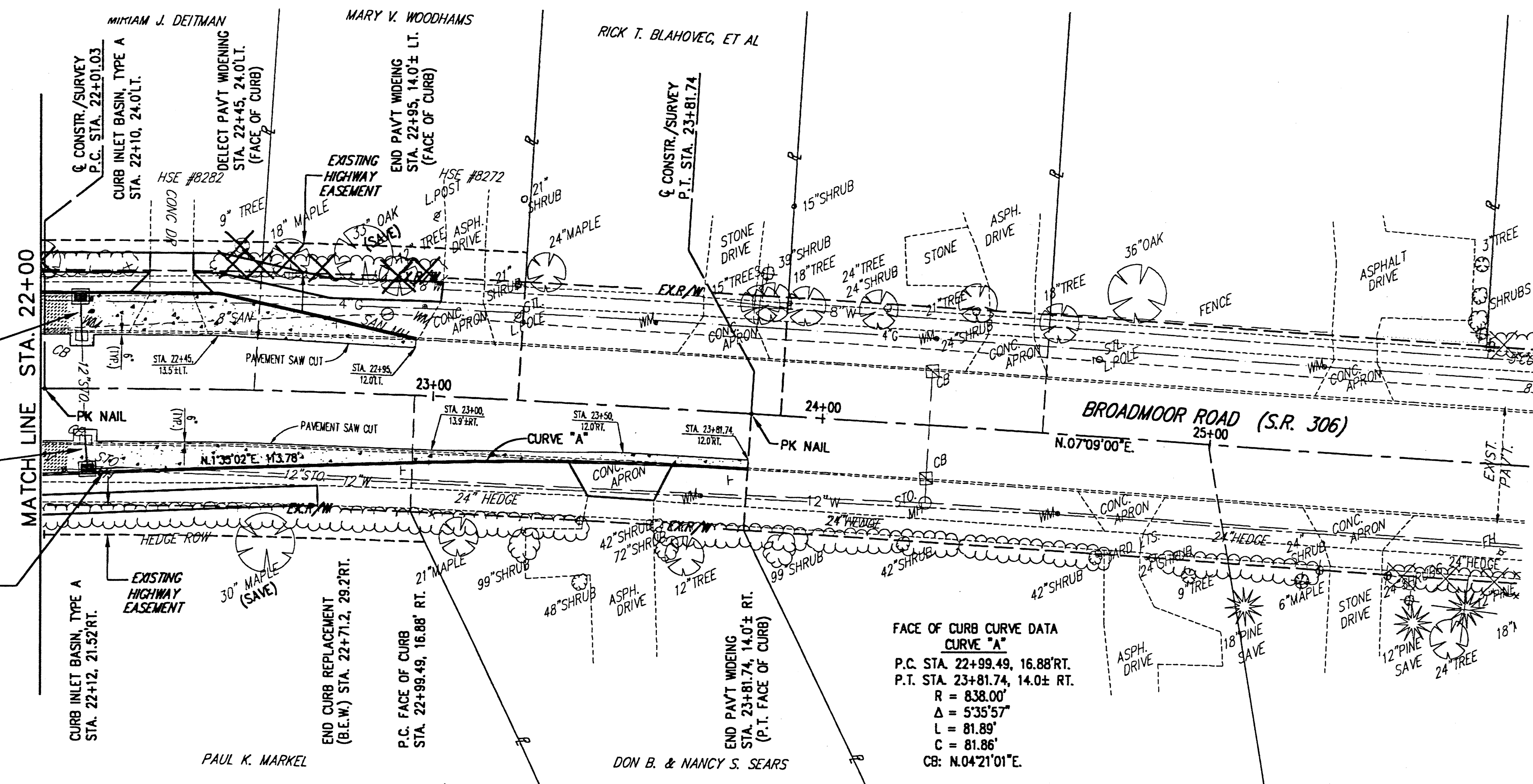
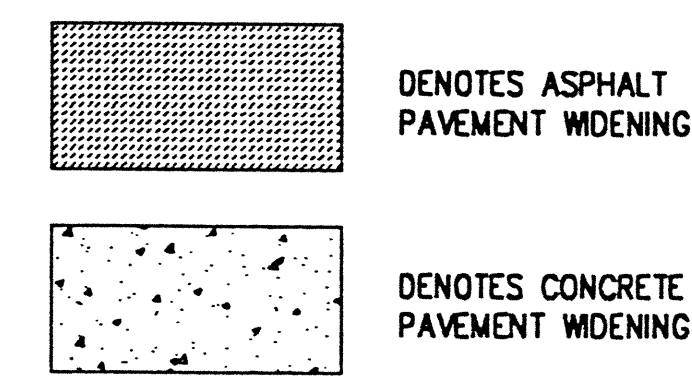
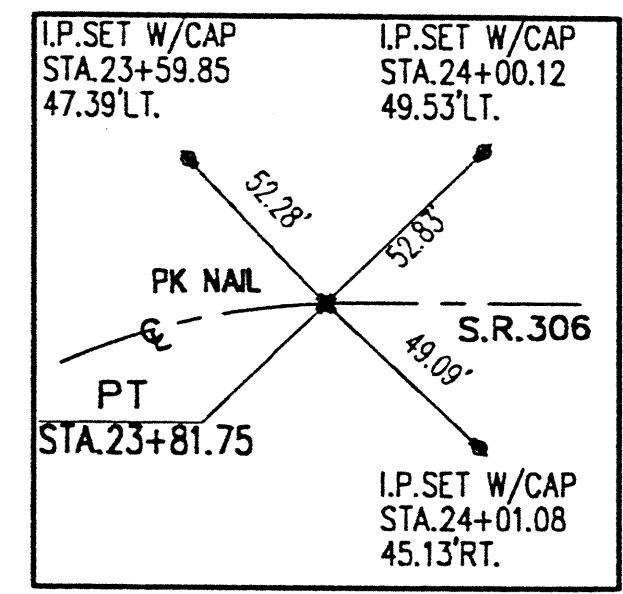
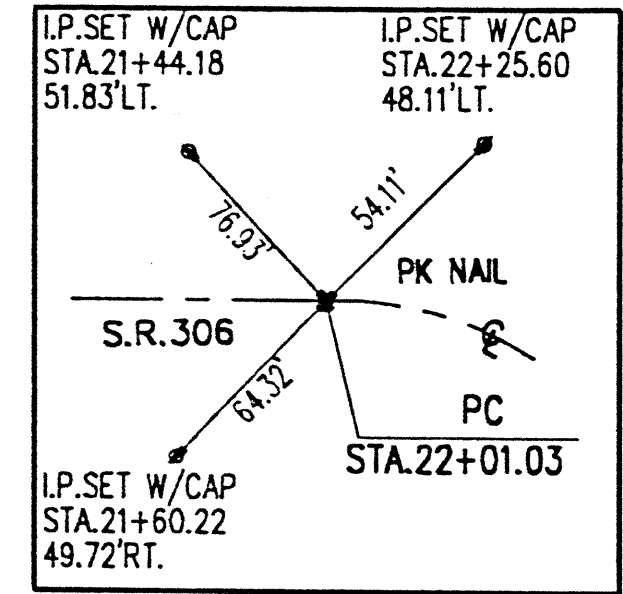


STATE ROUTE 306
 SURVEY CURVE DATA
 P.C. STA. 22+01.03
 P.T. STA. 23+81.74
 R = 2834.79'
 Δ = 02°01'16"
 Δ = 03°39'09"
 L = 180.71'
 T = 90.39'
 C = 180.68'
 CB = N.07°09'01"E.



FACE OF CURB CURVE "A"
 P.C. STA. 22+99.49, 16.88' RT.
 P.T. STA. 23+81.74, 14.0± RT.
 R = 838.00'
 Δ = 5°35'57"
 L = 81.89'
 C = 81.86'
 CB: N.04°21'01"E.



Station	Profile Description	Profile Data
22+00	CURB INLET BASIN, TYPE A STA. 22+12, 21.52 RT. RIM 707.35 12" INV. W 701.64 12" INV. N 701.51	707.35
22+12	EX. STO. MH. STA. 22+12, 20.71 RT. RIM 708.36 12" W 701.76 12" N 701.51 (REMOVE)	708.36
22+78	8 L.F. ~ 12" STORM	707.28
23+00	EX. SAN. MH. STA. 22+87.5, 20.21 RT. RIM 706.93 8" S. 699.38 8" S. 699.42	706.93
23+08	EX. 8" SAN.	706.08
23+69	EX. STO. MH. STA. 24+27.84, 20.1 RT. RIM 706.29 15" N. 696.94 12" S. 699.07 12" W. 699.59	706.29
24+32	EXISTING G. GRADE	705.32
24+95	CONNECT TO EX. 12" STORM	704.95
25+00	CURB INLET BASIN, TYPE A STA. 22+10, 24.0 LT. RIM 707.25 12" INV. E 702.55	707.25
25+08	EX. CURB INLET STA. 22+10, 14.1 RIM 707.45 (REMOVE)	707.45
25+15	EX. CURB INLET STA. 22+11.5, 14.9 RT. RIM 707.50 12" INV. W 701.84 12" INV. E 701.80 (REMOVE)	707.50
25+22	EX. STORM MANHOLE STA. 22+12, 20.1 RT. RIM 708.32 12" INV. W 701.76 12" INV. N 701.51 (REMOVE)	708.32
25+35	CURB INLET BASIN, TYPE A STA. 22+12, 21.52 RT. RIM 707.35 12" INV. W 701.64 12" INV. N 701.51	707.35
25+42	10 L.F. ~ 12" STORM @ 1.82%	705.42
25+50	12 L.F. ~ 12" STORM @ 1.82%	704.50

H:\2000\00123\DWG\306PP5.DWG - PLOT SCALE = 1:20



REV. NO.	DESCRIPTION	DATE	BY	CHK'D.

STATE ROUTE 84
INTERIM WIDENING & RESURFACING
IMPROVEMENTS
 CITY OF MENTOR, LAKE COUNTY, OHIO

DATE: MARCH, 2000
 DRAWN BY: J.J.C.
 CHECKED BY: C.C.H.
 APPROVED BY: C.C.H.
 F.B. No. — PG. —

S.R. 306 - PLAN AND PROFILE
STA. 22+00 TO STA. 25+00

SCALE	
HOR. 1" = 20'	VERT. 1" = 5'
CONTRACT No.	
00123	
SHEET NO.	OF
42	74