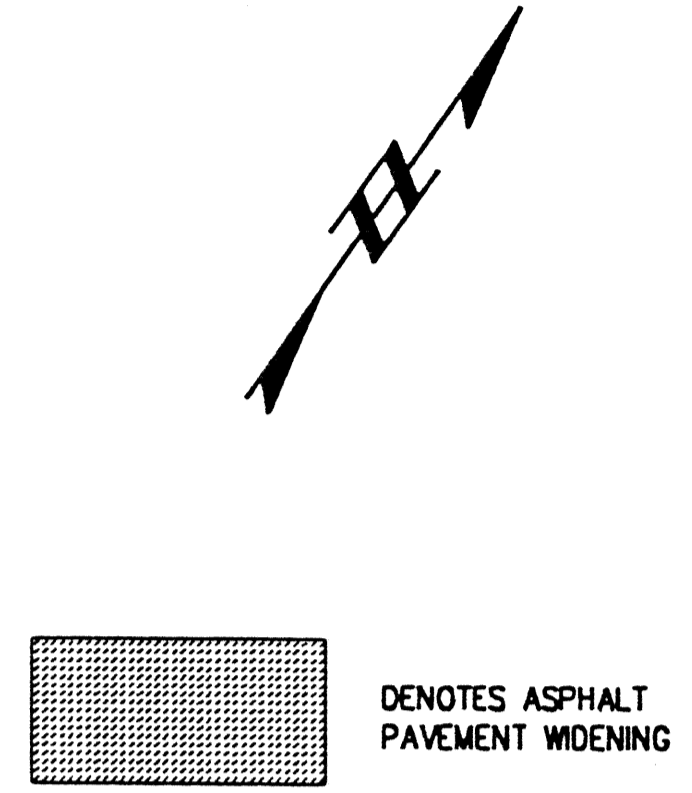
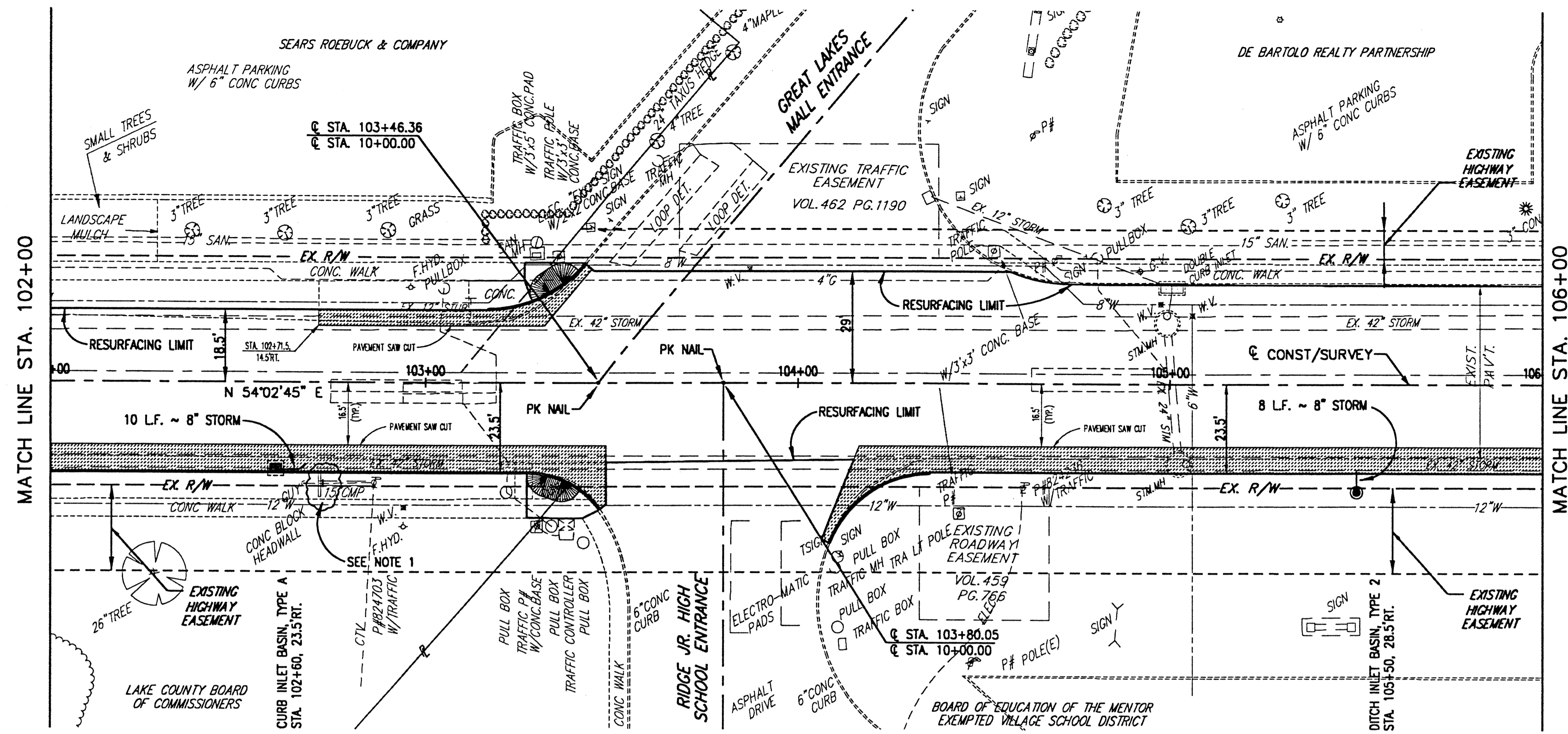


NOTE 1: CONTRACTOR TO REMOVE EXISTING HEADWALL & PLUG EX. 15" CMP.

NOTE: FOR INTERSECTION GRADING AND GEOMETRIC DETAILS, SEE SHEET NO. 51

BENCH MARK #7  
TOP N.W. COR. CONC. SLAB AT  
BASE OF FLAG POLE  
STA. 106+28±RT.  
ELEV. 700.74



PROPOSED GUTTER GRADES	102+00	103+00	104+00	105+00	106+00	PROPOSED SWALE GRADES
696.35 +00	696.20 L.P. +60	696.36 H.P. +00	696.22 +27.06	694.50 +50	693.50 L.P. +50	695
695	-0.24%		+0.40%		-0.52%	
690	10 L.F. ~ 8" STORM 45° BEND		BEGIN SWALE STA. 104+50, 28.5' RT.		8 L.F. ~ 8" STORM FIELD TEE CONNECTION INTO EX. #2" STORM 8" INV. 688.0±	
685	EX. 15" SAN		EX. 15" SAN		EX. 42" STORM	
680	FIELD TEE CONNECTION INTO EX. 42" STORM		EX. SAN. MH. STA. 103+29.5, 37'L.T. RIM 695.96 15" NE. & SW. 688.05		EX. 42" STORM	
675	CURB INLET BASIN, TYPE A STA. 102+60, 23.5' RT. RIM 696.03 Norm. Gutter 696.20 8" INV. E 692.03		EX. MODIFIED STORM MANHOLE STA. 105+00, 16.0'L.T. RIM 695.50 42" INV. 684.05 SW & NE 24" INV. 687.95 SE 12" INV. 688.28 NW		DITCH INLET BASIN, TYPE 2 STA. 105+50, 28.5' RT. RIM 694.50 8" INV. N 690.50	
670	696.57		696.22		695.67	
EXISTING PROFILE GRADE	696.57	696.57	696.45	696.22	695.88	695.78
	102+00	103+00	104+00	105+00	106+00	



REV. NO.	DESCRIPTION	DATE	BY	CHK'D.

**STATE ROUTE 84  
INTERIM WIDENING & RESURFACING  
IMPROVEMENTS**  
CITY OF MENTOR, LAKE COUNTY, OHIO

DATE: MARCH, 2000  
DRAWN BY: J.J.C.  
CHECKED BY: C.C.H.  
APPROVED BY: C.C.H.  
F.B. No. — PG. —

**S.R. 84 - PLAN AND PROFILE  
STA. 102+00 TO STA. 106+00**

SCALE	
HOR. 1" = 20'	
VERT. 1" = 5'	
CONTRACT No. 00123	
SHEET NO. 31	OF 74