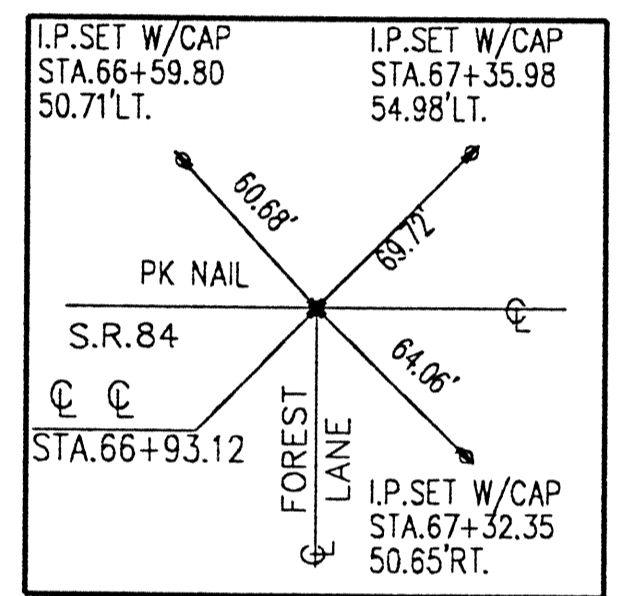
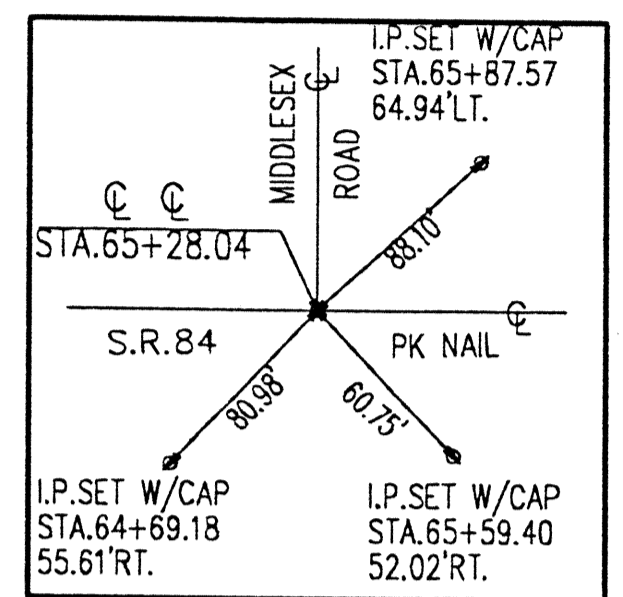
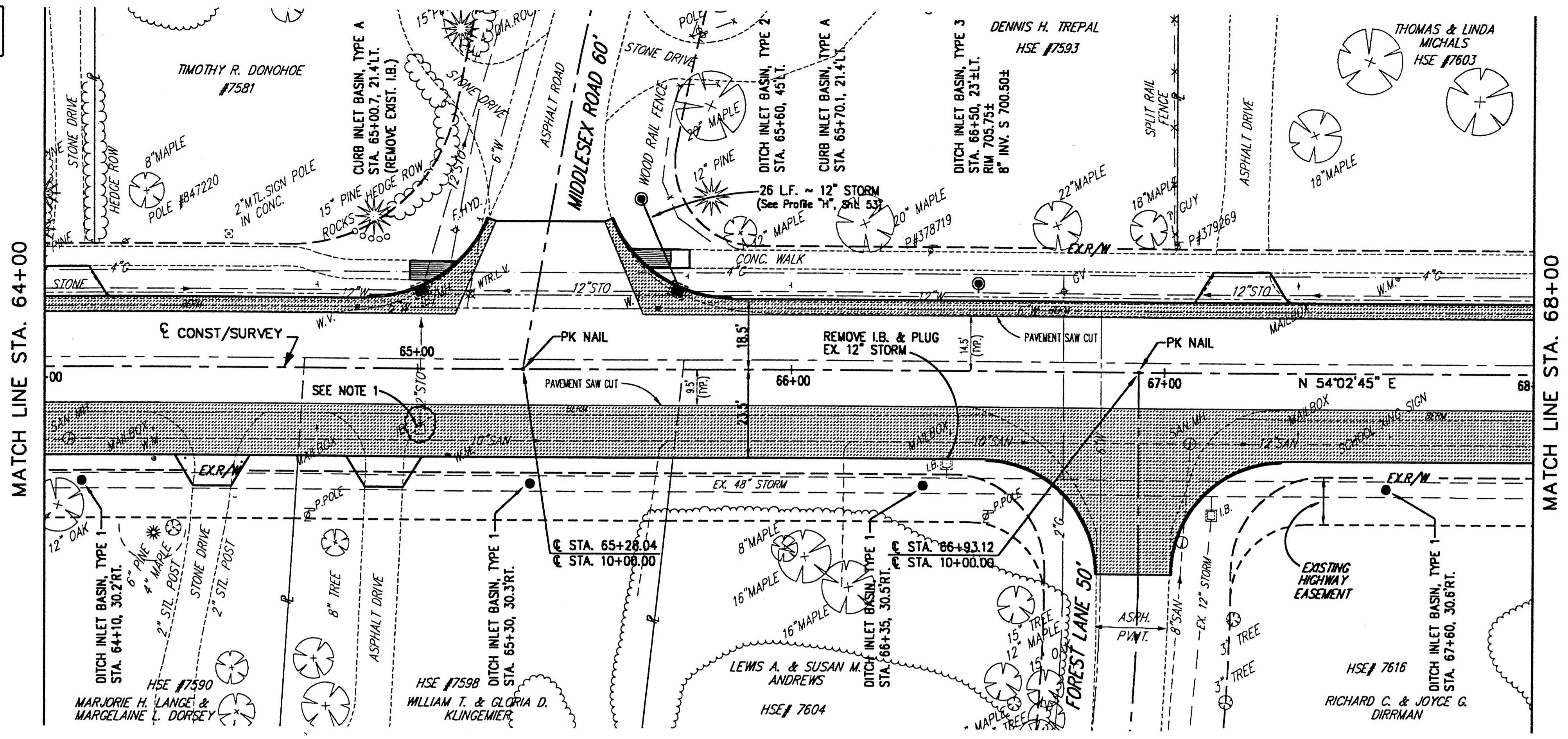
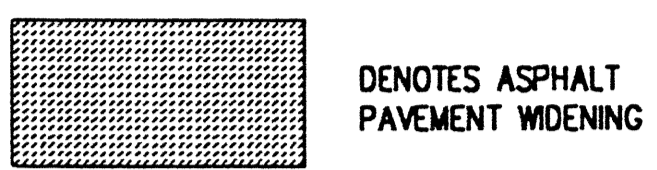


NOTE: FOR INTERSECTION GRADING AND GEOMETRIC DETAILS, SEE SHEET NO. 50

NOTE 1: REMOVE EXISTING INLET BASIN AND PLUG EXISTING 12" STORM TO NORTH.



BENCH MARK #3
TOP S.W. CORNER STONE PORCH
HSE #7593
STA. 66+56± LT.
ELEV. 707.41

	64+00	65+00	66+00	67+00	68+00
710					710
705					705
700					700
695					695
690					690
685					685
680					680
EXISTING PROFILE GRADE	706.93	706.81	706.68	706.58	706.44
	706.39	706.31	706.14	706.00	
	64+00	65+00	66+00	67+00	68+00



REV. NO.	DESCRIPTION	DATE	BY	CHK'D.

STATE ROUTE 84
INTERIM WIDENING & RESURFACING IMPROVEMENTS
CITY OF MENTOR, LAKE COUNTY, OHIO

DATE: MARCH, 2000
DRAWN BY: J.J.C.
CHECKED BY: C.C.H.
APPROVED BY: C.C.H.
F.B. No. — PG. —

S.R. 84 - PLAN AND PROFILE
STA. 64+00 TO STA. 68+00

SCALE	
HOR.	1" = 20'
VERT.	1" = 5'
CONTRACT No.	
00123	
SHEET NO.	OF
21	74

H:\2000\00123\DWG\B4P11.DWG - PLOT SCALE = 1:20