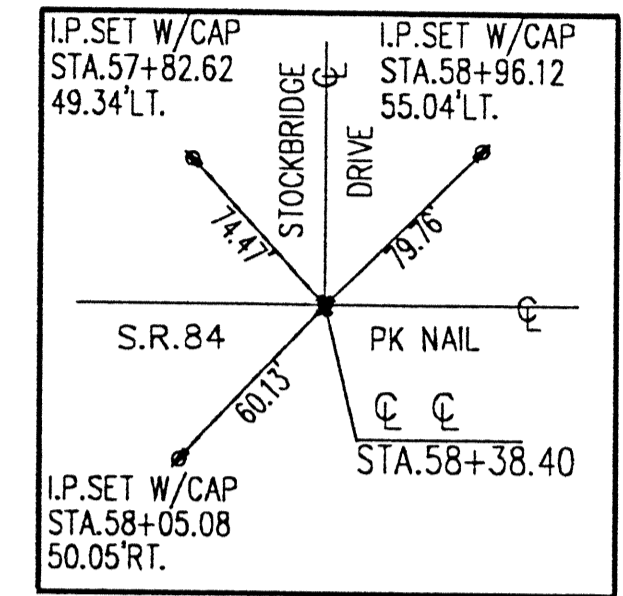
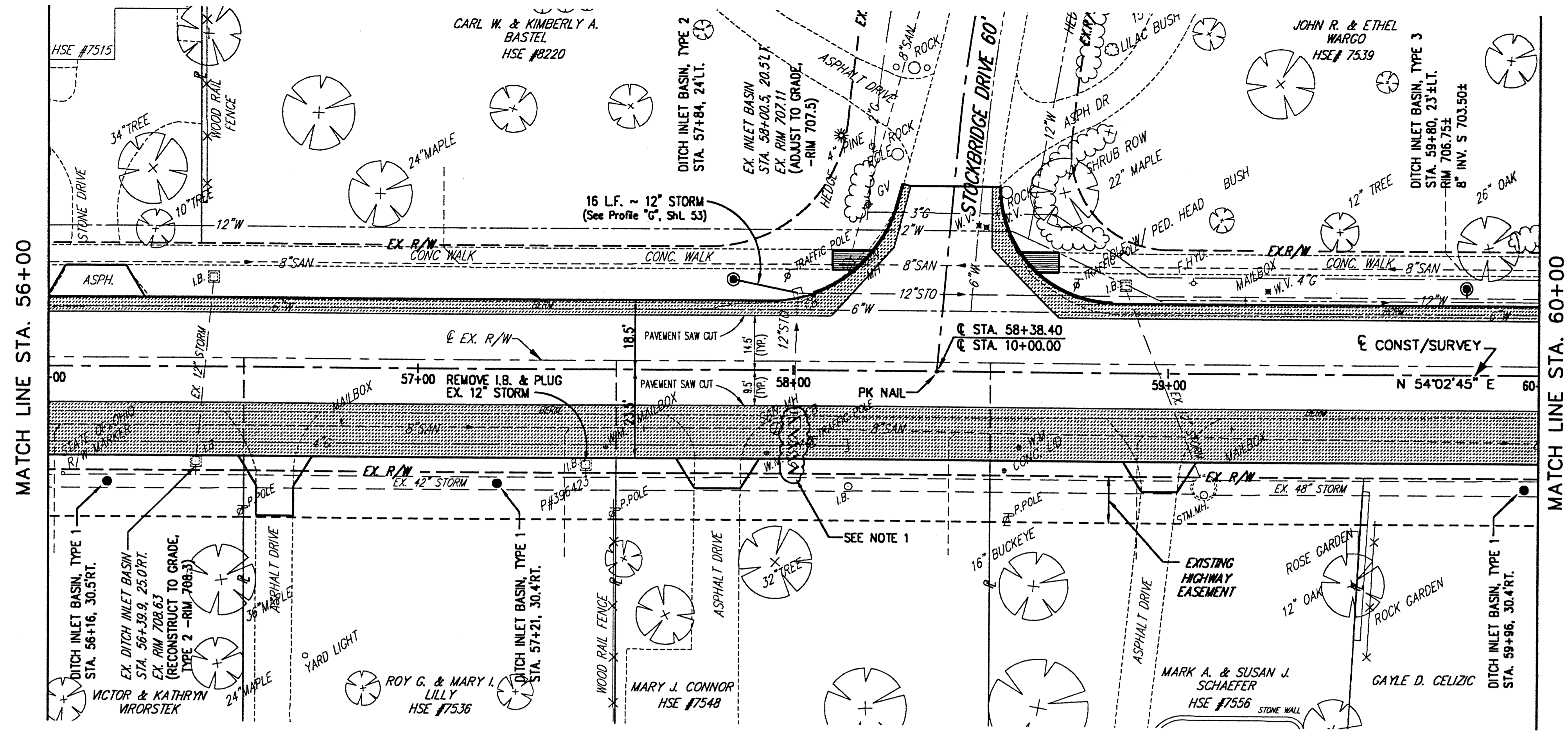


NOTE: FOR INTERSECTION GRADING AND GEOMETRIC DETAILS, SEE SHEET NO. 49

NOTE 1: REMOVE 12 LF.± OF EXIST. 6" STORM SEWER AND EXIST. CATCH BASIN. PLUG EXIST. 12" STORM SEWER TO NORTH.



BENCH MARK #2  
TOP N.W. COR. STONE RET. WALL  
IN FRONT OF HSE. #7536  
STA. 56+79±RT.  
ELEV. 712.79

■ DENOTES ASPHALT PAVEMENT WIDENING

	56+00	57+00	58+00	59+00	60+00
715					
710					
705					
700					
695					
690					
685					
EXISTING PROFILE GRADE	708.89	708.78	708.62	708.55	708.44
	708.15	708.04	707.94		

H:\2000\00123\DWG\84PP9.DWG - PLOT SCALE = 1:20



REV.	DESCRIPTION	DATE	BY	CHK'D.

**STATE ROUTE 84**  
**INTERIM WIDENING & RESURFACING IMPROVEMENTS**  
CITY OF MENTOR, LAKE COUNTY, OHIO

DATE: MARCH, 2000  
DRAWN BY: J.J.C.  
CHECKED BY: C.C.H.  
APPROVED BY: C.C.H.  
F.B. No. — PG. —

**S.R. 84 - PLAN AND PROFILE**  
**STA. 56+00 TO STA. 60+00**

SCALE	
HOR.	1" = 20'
VERT.	1" = 5'
CONTRACT No.	
00123	
SHEET No.	OF
19	74