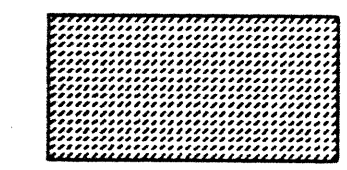
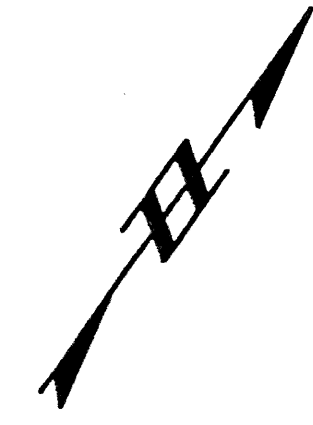
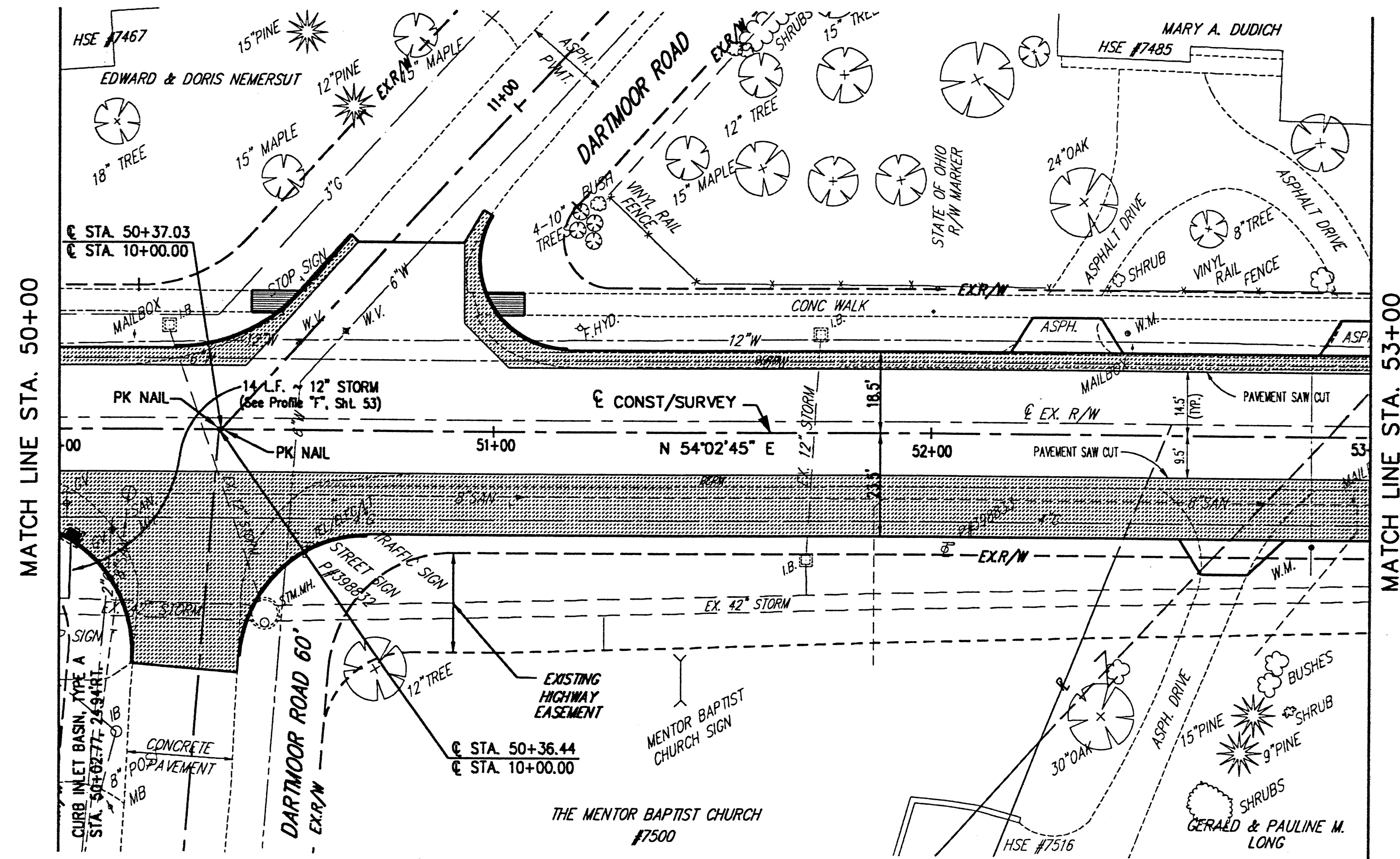
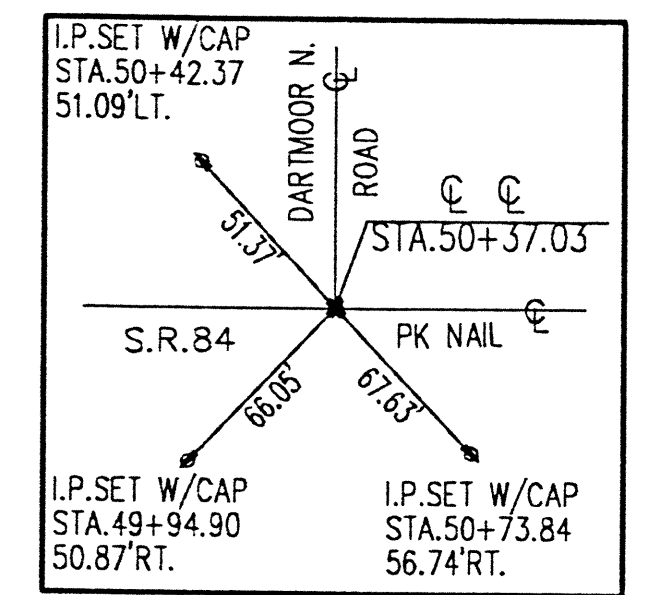
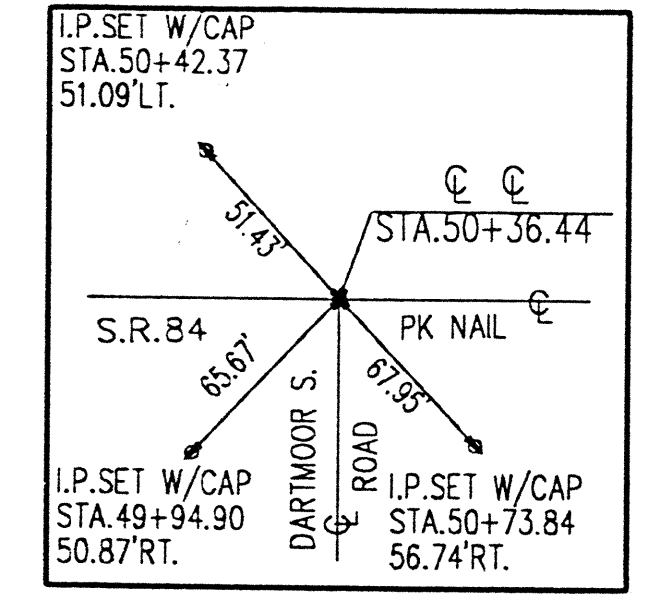


NOTE: FOR INTERSECTION GRADING AND GEOMETRIC DETAILS, SEE SHEET NO. 49



DENOTES ASPHALT PAVEMENT WIDENING



Station	Profile Grade	Notes
50+00	710	EXISTING G. GRADE
50+00	705	EX. 42" STORM
50+00	700	EX. 42" STORM
50+00	695	EX. SAN. MH. STA. 50+16, 14.5 RT. RIM 709.76 8" SW 700.20 8" S. SAN. 699.50
50+00	690	EX. STORM MANHOLE STA. 50+72.2 43.6 RT. RIM 709.0 42" INV. 702.90 SW & NE 12" INV. 702.35 NW 12" INV. 702.62 SE
50+00	685	EXISTING PROFILE GRADE 710.32
51+00	710	
51+00	705	
51+00	700	
51+00	695	EX. 8" SAN.
51+00	690	
51+00	685	710.12
52+00	710	
52+00	705	
52+00	700	EX. 42" STORM
52+00	695	6" SAN. CONN.
52+00	690	
52+00	685	709.80
53+00	710	
53+00	705	
53+00	700	
53+00	695	6" SAN. CONN.
53+00	690	
53+00	685	709.61

H:\2000\00123\DWG\84PP7.DWG - PLOT SCALE = 1:20



REV. NO.	DESCRIPTION	DATE	BY	CHK'D.

**STATE ROUTE 84
INTERIM WIDENING & RESURFACING
IMPROVEMENTS**
CITY OF MENTOR, LAKE COUNTY, OHIO

DATE: MARCH, 2000
DRAWN BY: J.J.C.
CHECKED BY: C.C.H.
APPROVED BY: C.C.H.
F.B. No. _____ PG. ___

**S.R. 84 - PLAN AND PROFILE
STA. 50+00 TO STA. 53+00**

SCALE	
HOR.	1" = 20'
VERT.	1" = 5'
CONTRACT No.	
00123	
SHEET NO.	OF
17	74