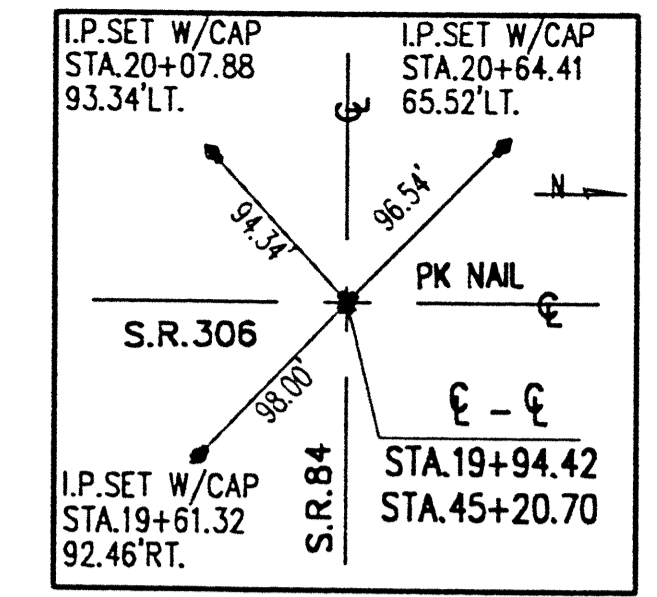
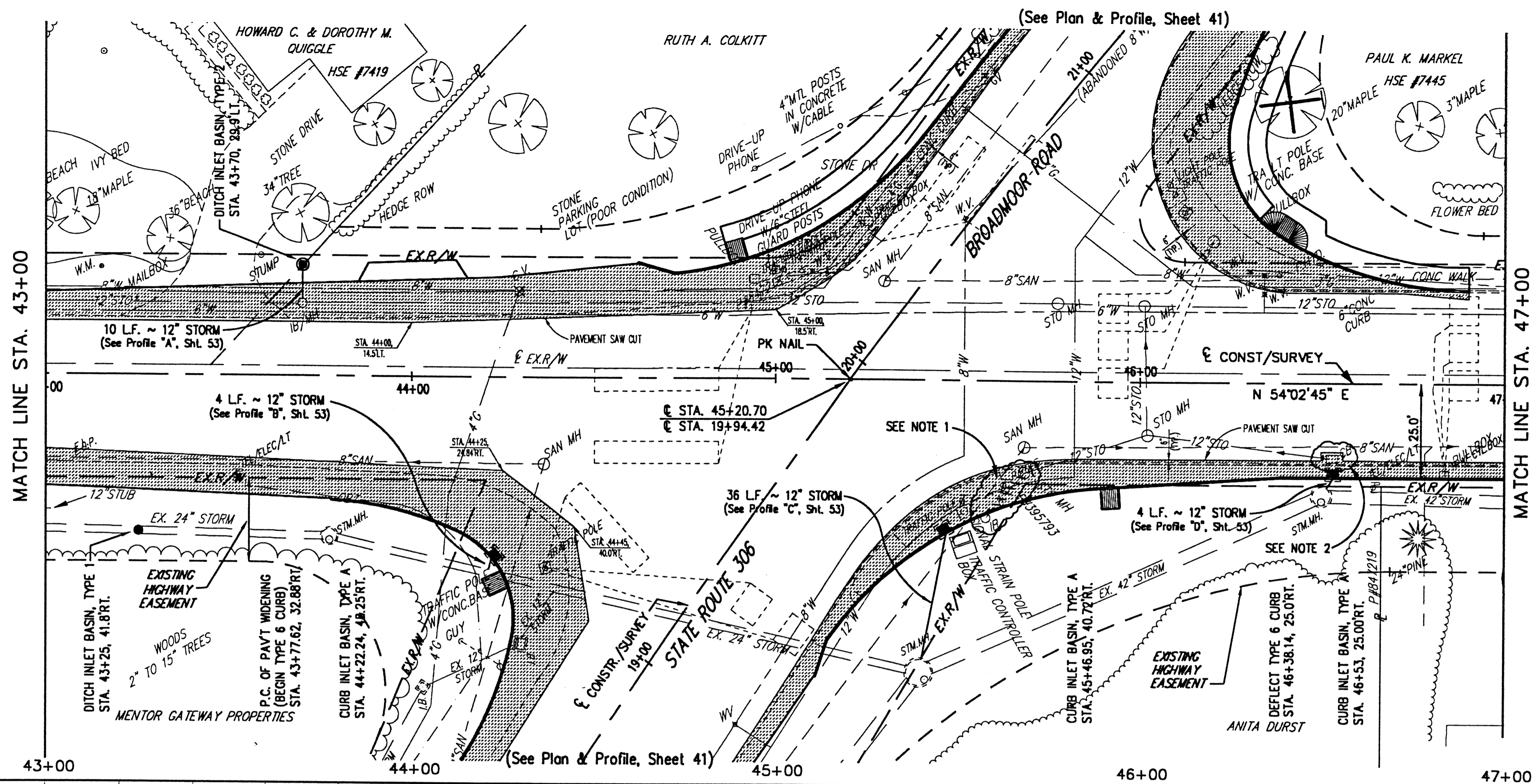
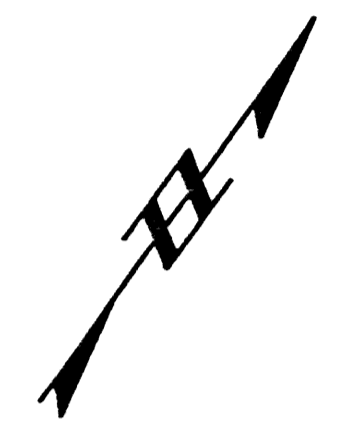


NOTE 1: REMOVE 16 L.F. OF EXISTING 8" STORM, INLET BASIN AND STORM MANHOLE. PLUG EXISTING 12" STORM TO EAST.

NOTE 2: REMOVE EXISTING CURB INLET BASIN. PLUG EXISTING 12" STORM TO WEST.



BENCH MARK #1
TOP S.E. CORNER CONC. PORCH
HSE #7445
STA. 47+15±LT.
ELEV. 711.48



NOTE: FOR INTERSECTION GRADING AND GEOMETRIC DETAILS, SEE SHEET NO. 48

EXISTING PROFILE GRADE	710.16	710.31	710.42	710.59	710.75	710.85	711.08	711.05	711.11
MATCH LINE STA. 43+00									MATCH LINE STA. 47+00
EXISTING & GRADE									
EX. 8" SAN									
EX. 24" STORM									
DITCH INLET BASIN, TYPE 1 STA. 43+25, 41.8' RT. RIM 708.5									
EX. STORM MANHOLE STA. 43+74.5, 43.9' RT. RIM 710.08 24" INV. 704.44									
EX. SAN. MH. STA. 44+36.5, 23' RT. RIM 710.15 8" S. 703.33 8" SW 703.17									
EX. STO. 18 STA. 45+57, 36.5' RT. RIM 709.19 8" N. 707.65 (REMOVE)									
EX. STO. MH STA. 45+68.3, 24.5' RT. RIM 710.46 12" S.W. 705.96 12" N.E. 705.96 8" S. 707.44 (REMOVE)									
EX. SAN. MH. STA. 45+68.5, 17.5' RT. RIM 710.75 8" S. 702.77 8" NE 702.04									
EX. STORM MANHOLE STA. 45+41.5, 80.7' RT. RIM 709.50 42" INV. 704.14 S 42" INV. 708.75 NE 24" INV. 704.32 W 12" INV. 703.10 NW									
EX. STO. 18/MH STA. 46+02, 14' RT. RIM 710.73 12" N.W. 704.93 12" N.E. 708.93									
EX. STO. 18/MH STA. 46+53, 21' RT. RIM 710.06 12" S.W. 707.46 (REMOVE)									
EX. STORM MANHOLE STA. 46+49.9, 31.8' RT. RIM 710.24 42" INV. 703.25 SW & NE									
EX. 8" SAN									
6" SAN CONN.									
MATCH LINE STA. 43+00									MATCH LINE STA. 47+00

H:\2000\00123\DWG\84RPP5.DWG - PLOT SCALE = 1:20



REV. NO.	DESCRIPTION	DATE	BY	CHK'D.

**STATE ROUTE 84
INTERIM WIDENING & RESURFACING
IMPROVEMENTS**
CITY OF MENTOR, LAKE COUNTY, OHIO

DATE: MARCH, 2000
DRAWN BY: J.J.C.
CHECKED BY: C.C.H.
APPROVED BY: C.C.H.
F.B. No. PG. --

**S.R. 84 - PLAN AND PROFILE
STA. 43+00 TO STA. 47+00**

SCALE	
HOR.	1" = 20'
VERT.	1" = 5'
CONTRACT No.	
00123	
SHEET NO.	OF
15	74