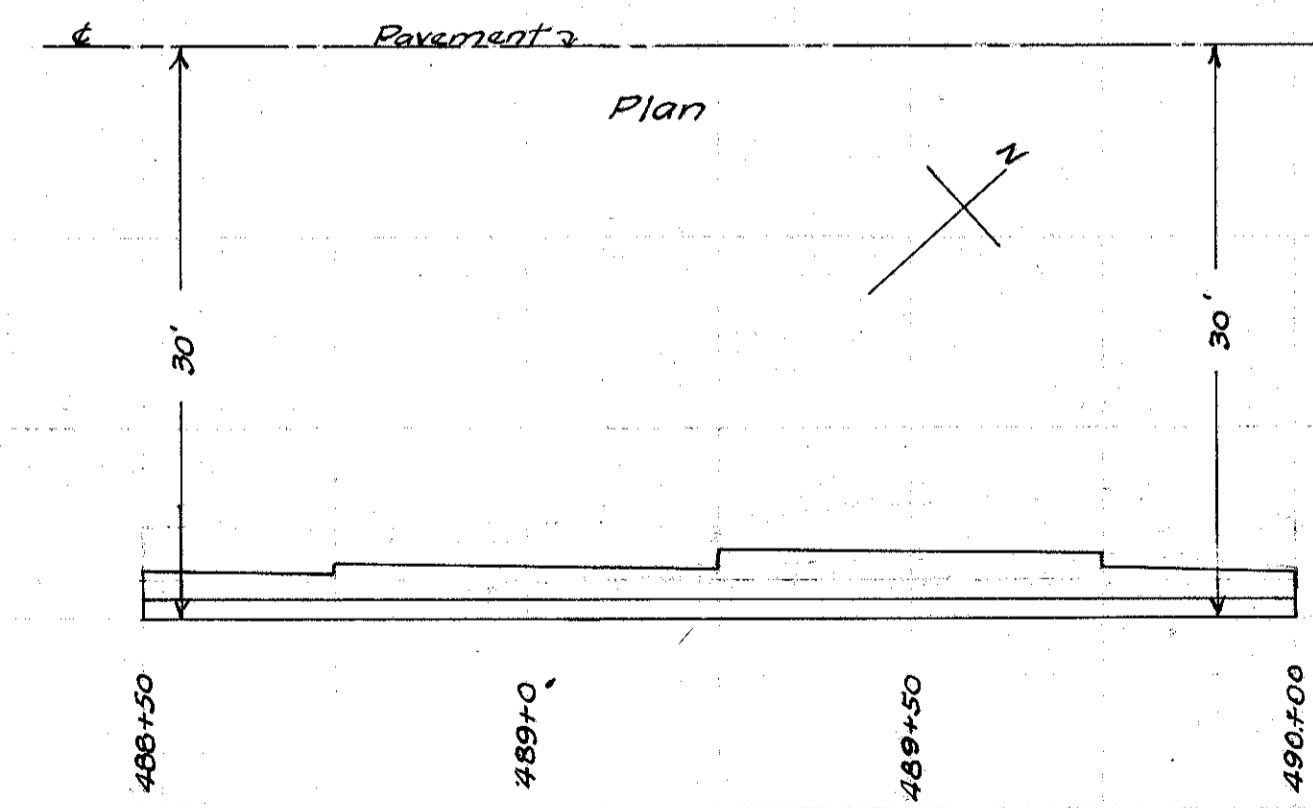
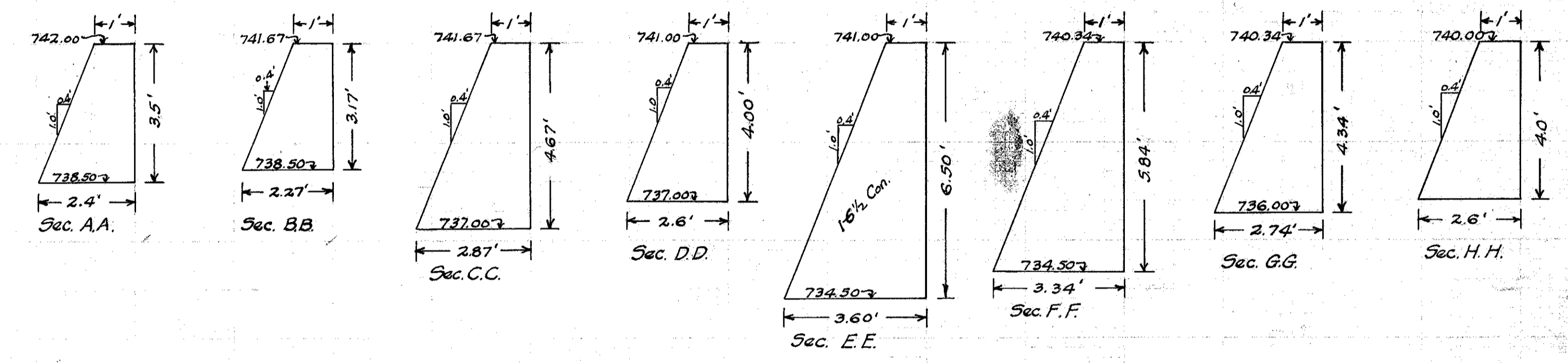
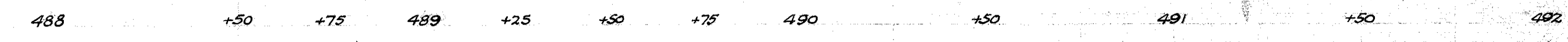
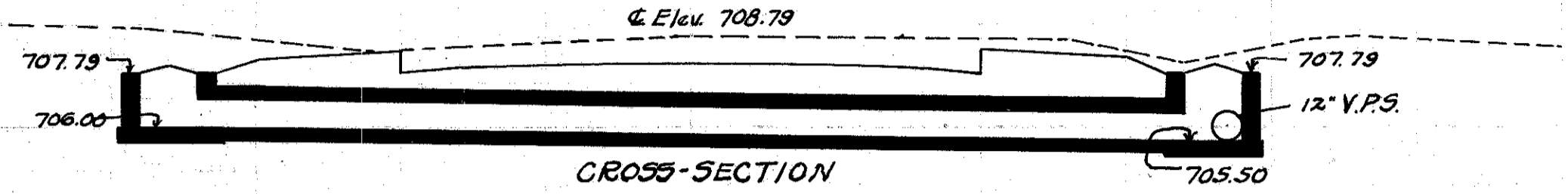


DETAIL OF PLAIN CONCRETE WALL 30' TO R OF C FROM STA. 488+50 TO STA 490+0



**EST. QUANTITIES.**  
Exc. 56.0 cu. yds.  
Con 1-5 1/2 53.0 cu. yds.

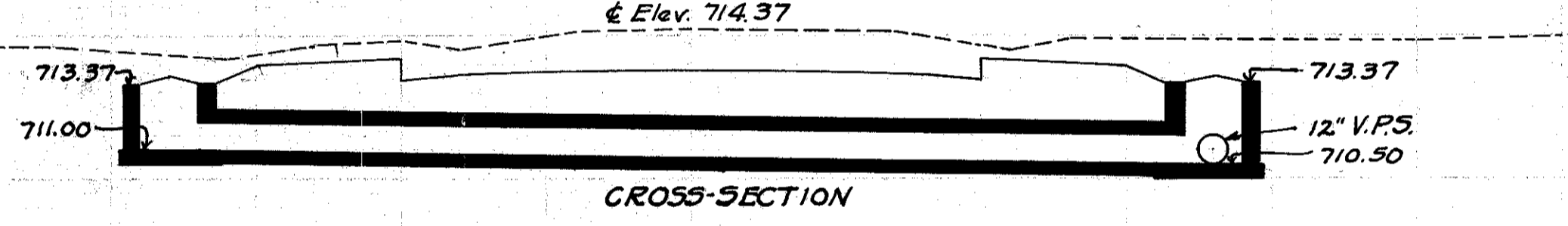
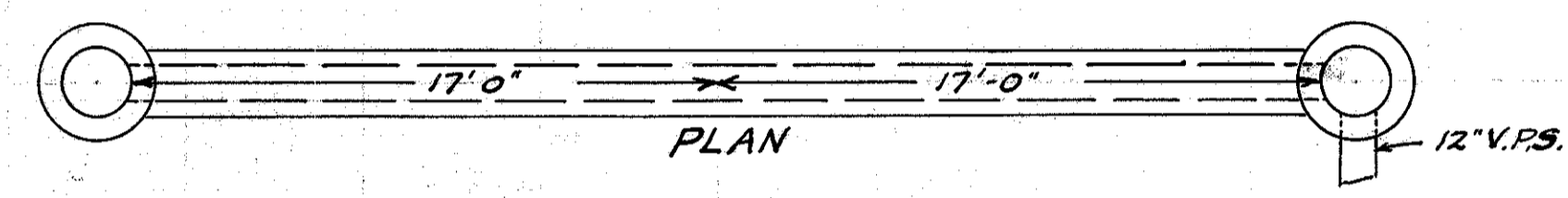
Drawn by Cumings + Plummer. Checked L. A. Breen Div'n. Engr.  
Date 1-30-28 Date 2-7-28



**CULVERT DATA**  
Type: Std. V.S.P. Culvert  
Size: 12" x 34'  
Work Req.: Build 12"x34' std. V.P.(enc)  
culvert I.B. on R+L

**EST. QUANTITIES**  
Exc. 7.5 cu. yds.  
Con. 1-8 3.53 cu. yds.  
12" V.P. 34 lin. ft.  
Inlet Basins comp. 2

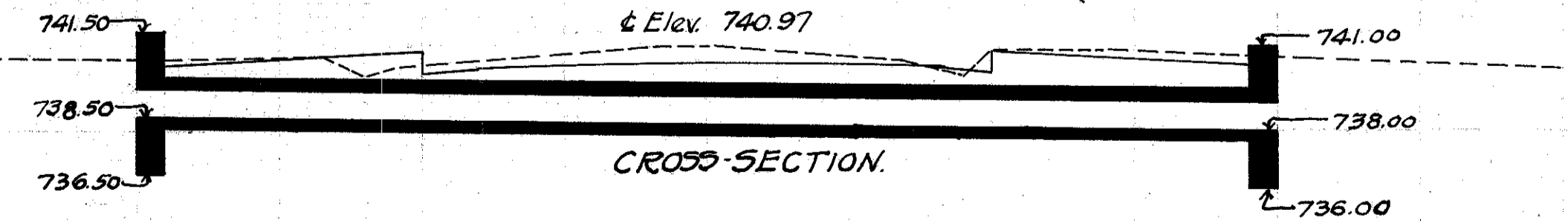
Drawn by Cumings + Plummer. Checked L. A. Breen Div'n. Engr.  
Date 1-26-28 Date 2-7-28 Sta. 564+0



**CULVERT DATA**  
Type: Std. V.S.P. culvert. Dr. #300  
Size: 12" x 34'  
Work Req.: Build 12"x34' std. V.P.(enc)  
culvert I.B. on R+L.

**EST. QUANTITIES**  
Exc. 11.0 cu. yds.  
Con. 1-8 3.53 cu. yds.  
12" V.P. 34 lin. ft.  
Inlet Basins comp. 2

Drawn by Cumings + Plummer. Checked L. A. Breen Div'n. Engr.  
Date 1-26-28 Date 2-7-28 Sta. 541+0



**CULVERT DATA**  
Type: Std. V.S.P. culvert Dr. #300  
Size: 12" x 40'  
Work Req.: Build 12"x40' std. V.P.(enc)  
culvert, h.w. on R+L. open 50' ditch on S.

**EST. QUANTITIES**  
Exc. 10.0 cu. yds.  
Con. 1-8 4.10 cu. yds.  
Con. 1-5 1/2 2.00 cu. yds.  
Reinf. Steel 65 lbs.  
12" V.P. 40.0 lin. ft.

Drawn by Cumings + Plummer. Checked L. A. Breen Div'n. Engr.  
Date 2-7-28 Date 2-7-28 Sta. 516+0