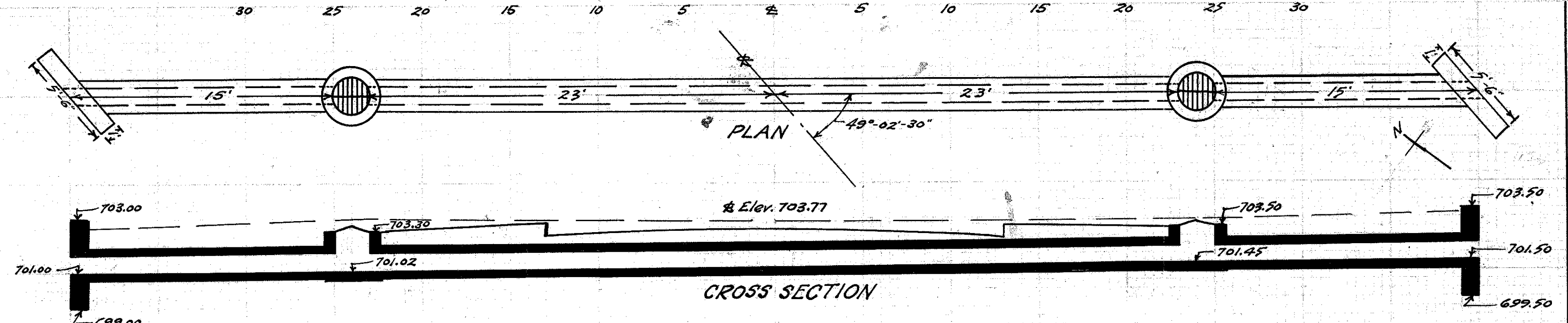


**CULVERT DATA**  
 Type: Std. V.S.P. culvert Dr. #300  
 Size: 12" x 34'  
 Work Req: Build 12" x 34' std. V.P. (enc.) culvert and I.B. on R+L  
 Drawn by Cumings + Plummer  
 Date 1/19/28

**EST. QUANTITIES**  
 Exc. 14.4 cu. yds.  
 Conc. 1-8 3.52 cu. yds.  
 12" V.S.P. 34 lin. ft.  
 Inlet basins comp. 2

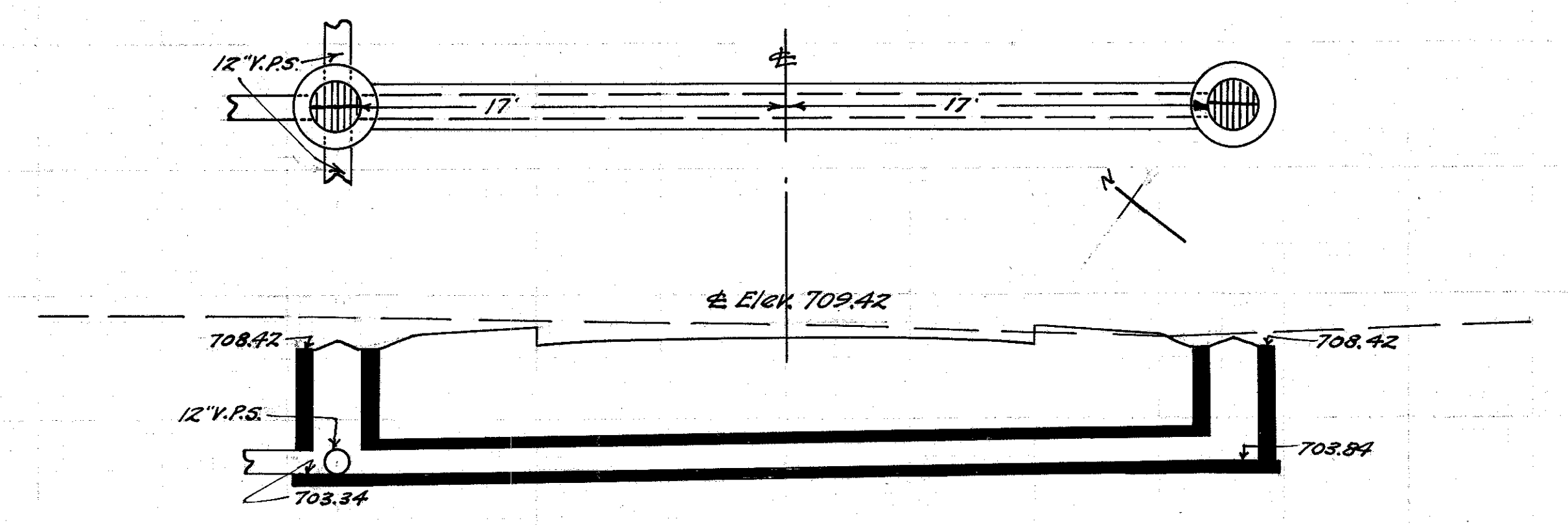
Checked L.A. Bruen  
 Date 2-7-28 Div'n. Engr.  
 Sta. 41+50



**CULVERT DATA**  
 Type: Std. V.S.P. culvert Dr. #300  
 Size: 12" x 80'  
 Work Req: Build 12" x 80' std. V.P. (enc.) culvert and I.B. and hw. on R+L clean ditch 200' to left  
 Drawn by Cumings + Plummer  
 Date 1/19/28

**EST. QUANTITIES**  
 Exc. 24.0 cu. yds.  
 Conc. 1-8 8.21 cu. yds.  
 Conc. 1-5 2.0 cu. yds.  
 Reinf. steel 65 lbs.  
 Inlet basins comp. 2  
 12" V.S.P. 80 lin. ft.

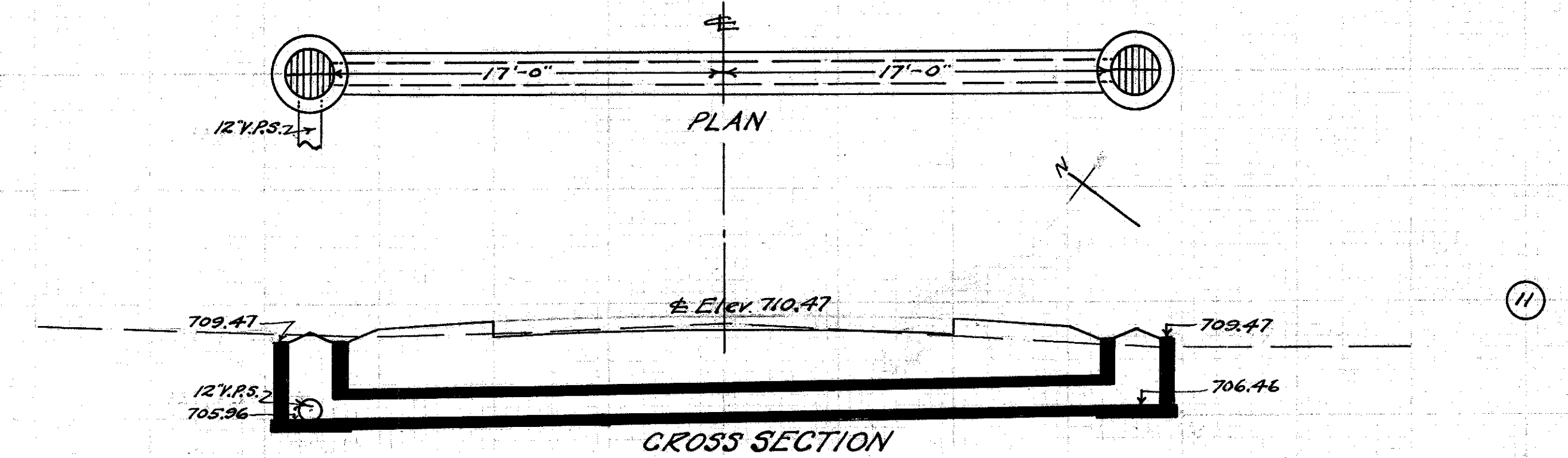
Checked L.A. Bruen  
 Date 2-7-28 Div'n. Engr.  
 Sta. 73+50



**CULVERT DATA**  
 Type: Std. V.S.P. culvert Dr. #300  
 Size: 12" x 34'  
 Work Req: Build 12" x 34' std. V.P. (enc.) culvert and I.B. on R+L  
 Drawn by Cumings + Plummer  
 Date 1/19/28

**EST. QUANTITIES**  
 Exc. 14.9 cu. yds.  
 Conc. 1-8 3.52 cu. yds.  
 12" V.S.P. 34 lin. ft.  
 Inlet basins comp. 2

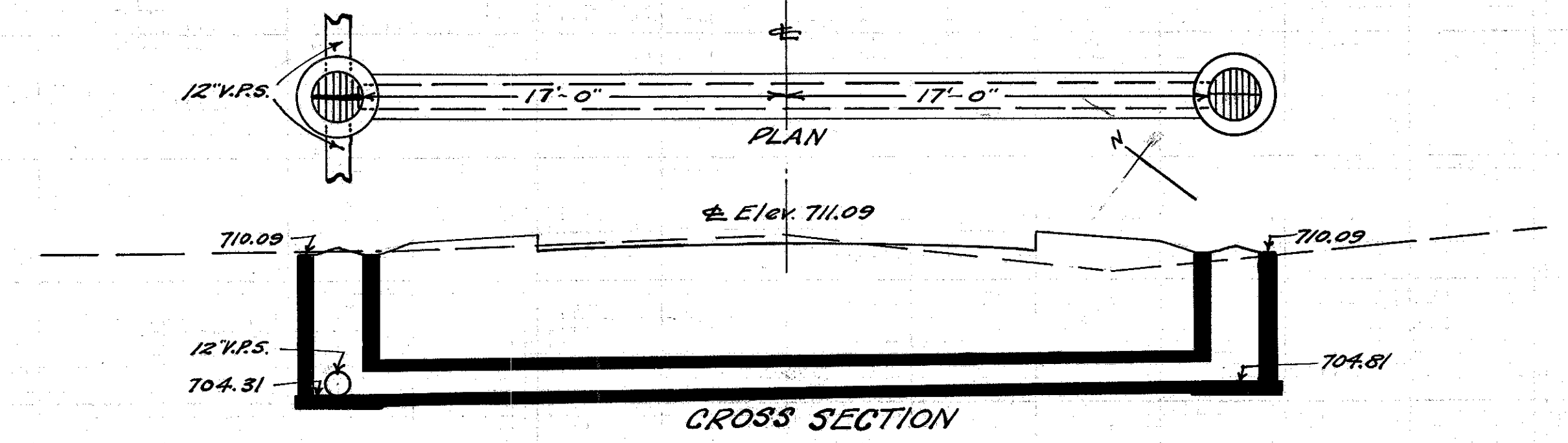
Checked L.A. Bruen  
 Date 2-7-28 Div'n. Engr.  
 Sta. 40+75



**CULVERT DATA**  
 Type: Std. V.S.P. culvert Dr. #300  
 Size: 12" x 34'  
 Work Req: Build 12" x 34' std. V.P. (enc.) culvert and I.B. on R+L  
 Drawn by Cumings + Plummer  
 Date 1/19/28

**EST. QUANTITIES**  
 Exc. 9.5 cu. yds.  
 Conc. 1-8 3.52 cu. yds.  
 12" V.S.P. 34 lin. ft.  
 Inlet basin comp. 2

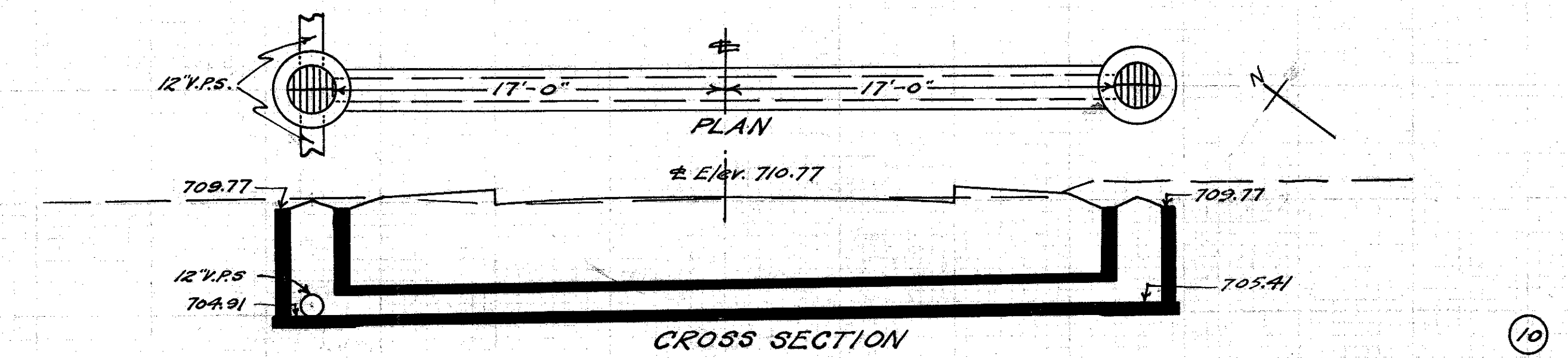
Checked L.A. Bruen  
 Date 2-7-28 Div'n. Engr.  
 Sta. 49+50



**CULVERT DATA**  
 Type: Std. V.S.P. culvert Dr. #300  
 Size: 12" x 34'  
 Work Req: Build 12" x 34' std. V.P. (enc.) culvert and I.B. on R+L  
 Drawn by Cumings + Plummer  
 Date 1/19/28

**EST. QUANTITIES**  
 Exc. 15.6 cu. yds.  
 Conc. 1-8 3.52 cu. yds.  
 12" V.S.P. 34 lin. ft.  
 Inlet basins comp. 2

Checked L.A. Bruen  
 Date 2-7-28 Div'n. Engr.  
 Sta. 37+50



**CULVERT DATA**  
 Type: Std. V.S.P. culvert Dr. #300  
 Size: 12" x 34'  
 Work Req: Build 12" x 34' std. V.P. (enc.) culvert and I.B. on R+L  
 Drawn by Cumings + Plummer  
 Date 1/19/28

**EST. QUANTITIES**  
 Exc. 12.7 cu. yds.  
 Conc. 1-8 3.52 cu. yds.  
 12" V.S.P. 34 lin. ft.  
 Inlet basins comp. 2

Checked L.A. Bruen  
 Date 2-7-28 Div'n. Engr.  
 Sta. 46+0