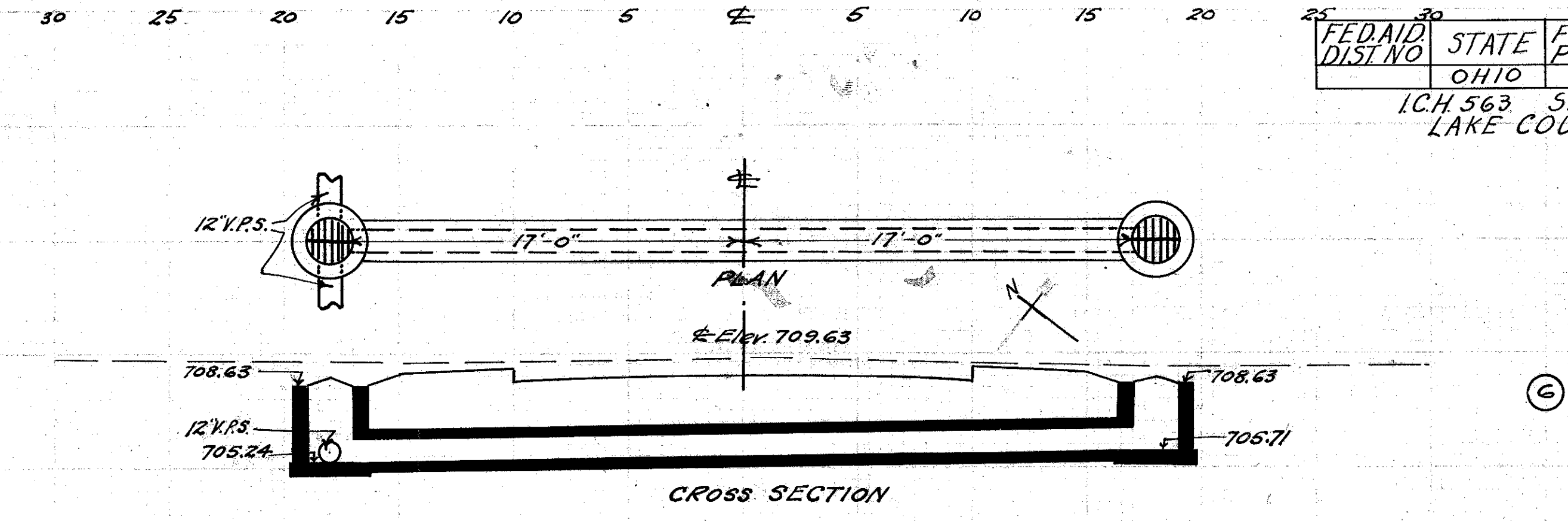


CULVERT DATA
 Type: Std. V.S.P. culvert Dr. #300
 Size: 12" x 34'
 Work Req: Build 12" x 34' std. V.P. (enc.) culvert and build I.B. on R+L

EST. QUANTITIES
 Exc. 10.0 cu. yds.
 Conc. 1-8 3.52 cu. yds.
 12" V.S.P. 34 lin. ft.
 Inlet basins comp. 2

Drawn by Cumings + Plummer Checked by L.A. Brown
 Date 1/11/28 Date 2-7-28 Div'n. Engr.

Sta. 10+0

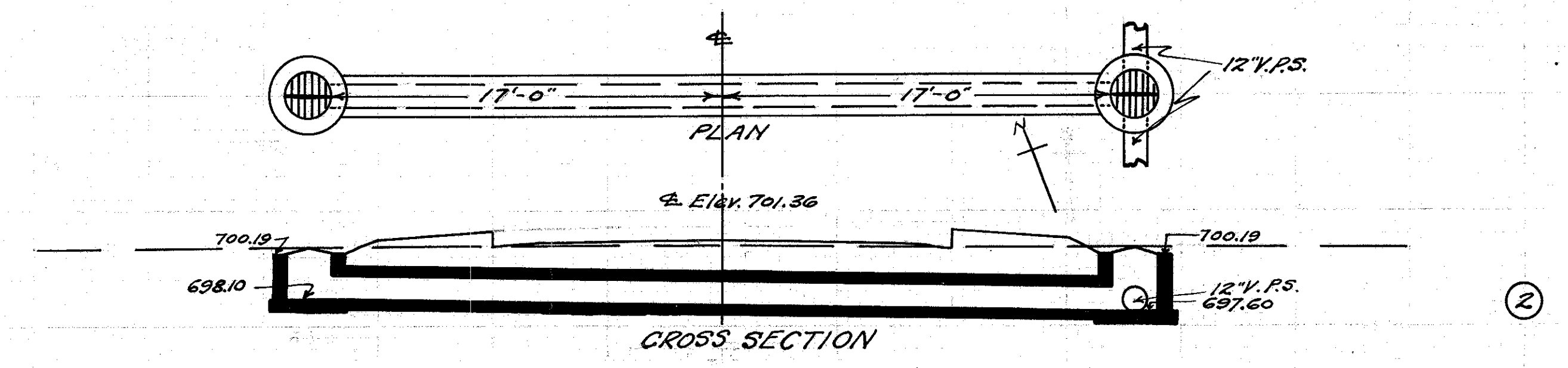


CULVERT DATA
 Type: Std. V.S.P. culvert Dr. #300
 Size: 12" x 34'
 Work Req: Build 12" x 34' std. V.P. (enc.) culvert and I.B. on R+L

EST. QUANTITIES
 Exc. 10.6 cu. yds.
 Conc. 1-8 3.52 cu. yds.
 12" V.S.P. 34 lin. ft.
 Inlet basins comp. 2

Drawn by Cumings + Plummer Checked by L.A. Brown
 Date 1/11/28 Date 2-7-28 Div'n. Engr.

Sta. 34+50

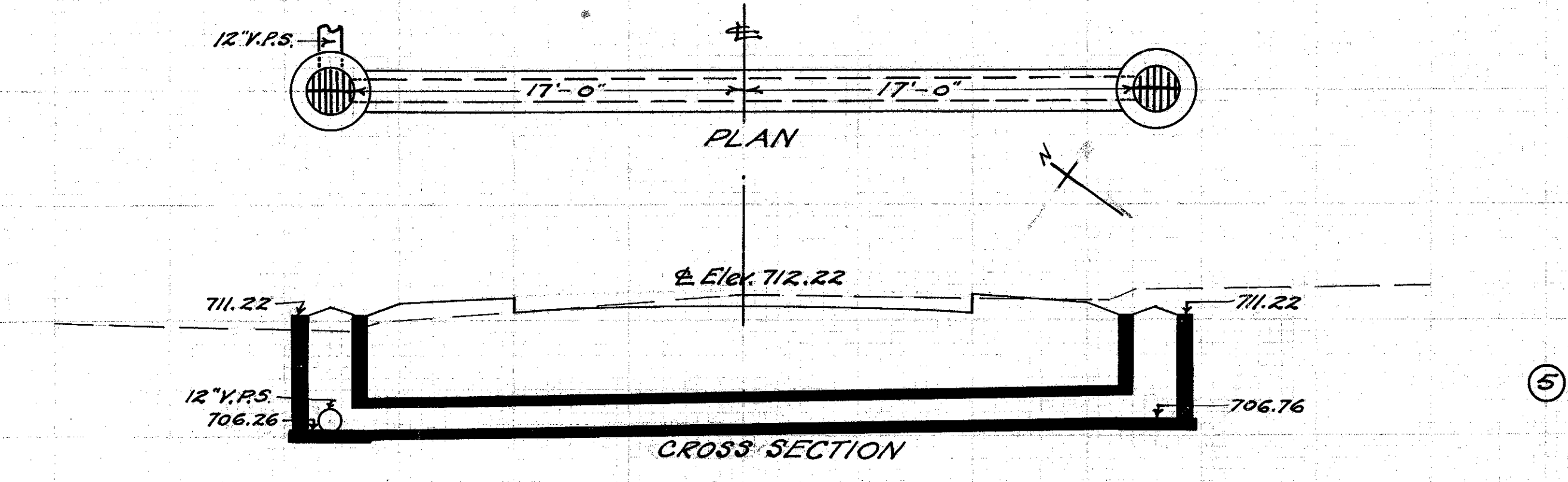


CULVERT DATA
 Type: Std. V.S.P. culvert Dr. #300
 Size: 12" x 34'
 Work Req: Build 12" x 34' std. V.P. (enc.) culvert and build I.B. on R+L

EST. QUANTITIES
 Exc. 7.4 cu. yds.
 Conc. 1-8 3.52 cu. yds.
 12" V.S.P. 34 lin. ft.
 Inlet basins comp. 2

Drawn by Cumings + Plummer Checked by L.A. Brown
 Date 1/11/28 Date 2-7-28 Div'n. Engr.

Sta. 6+50

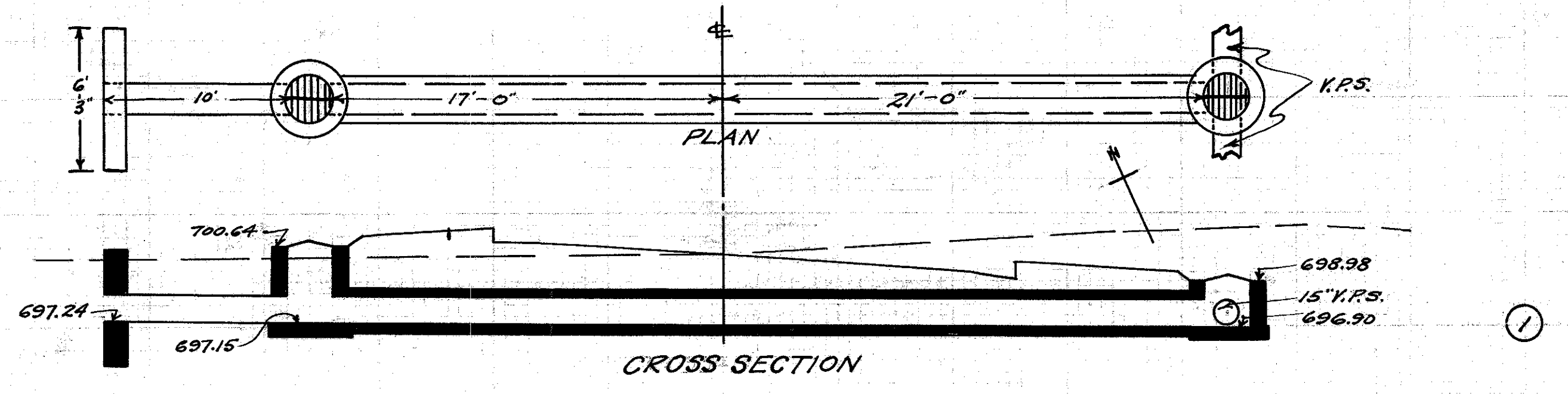


CULVERT DATA
 Type: Std. V.S.P. culvert Dr. #300
 Size: 12" x 34'
 Work Req: Build 12" x 34' std. V.P. (enc.) culvert and build I.B. on R+L

EST. QUANTITIES
 Exc. 13.7 cu. yds.
 Conc. 1-8 3.52 cu. yds.
 12" V.S.P. 34 lin. ft.
 Inlet basins comp. 2

Drawn by Cumings + Plummer Checked by L.A. Brown
 Date 1/11/28 Date 2-7-28 Div'n. Engr.

Sta. 31+0

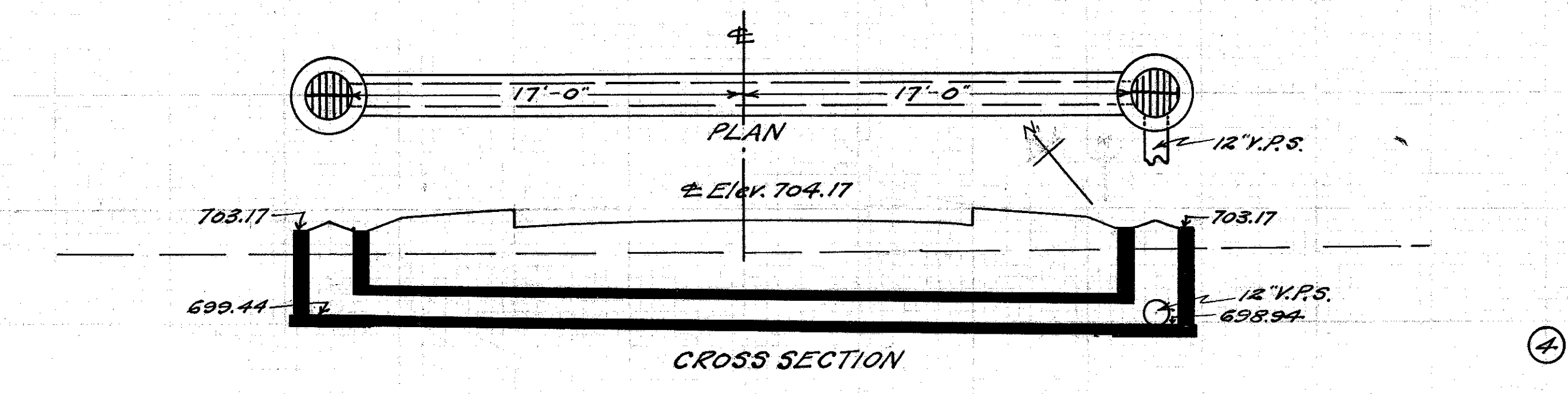


CULVERT DATA
 Type: std. V.S.P. culvert Dr. #300
 Size: 15" x 38'
 Work Req: Build 15" x 38' std. V.P. (enc.) culvert & extend to left with 10' 15" V.P.S. Build I.B. on R+L and lin. on L

EST. QUANTITIES
 Exc. 16.2 cu. yds.
 Conc. 1-5 1.15 cu. yds.
 Conc. 1-8 4.75 cu. yds.
 Reinf. steel 35 lbs.
 15" V.S.P. 48 lin. ft.
 Inlet basins comp. 2

Drawn by Cumings + Plummer Checked by L.A. Brown
 Date 1/18/28 Date 2-7-28 Div'n. Engr.

Sta. 3+0



CULVERT DATA
 Type: Std. V.S.P. culvert Dr. #300
 Size: 12" x 34'
 Work Req: Build 12" x 34' std. V.P. (enc.) culvert and build I.B. on R+L

EST. QUANTITIES
 Exc. 7.7 cu. yds.
 Conc. 1-8 3.52 cu. yds.
 12" V.S.P. 34 lin. ft.
 Inlet basins comp. 2

Drawn by Cumings + Plummer Checked by L.A. Brown
 Date 1/11/28 Date 2-7-28 Div'n. Engr.

Sta. 13+20