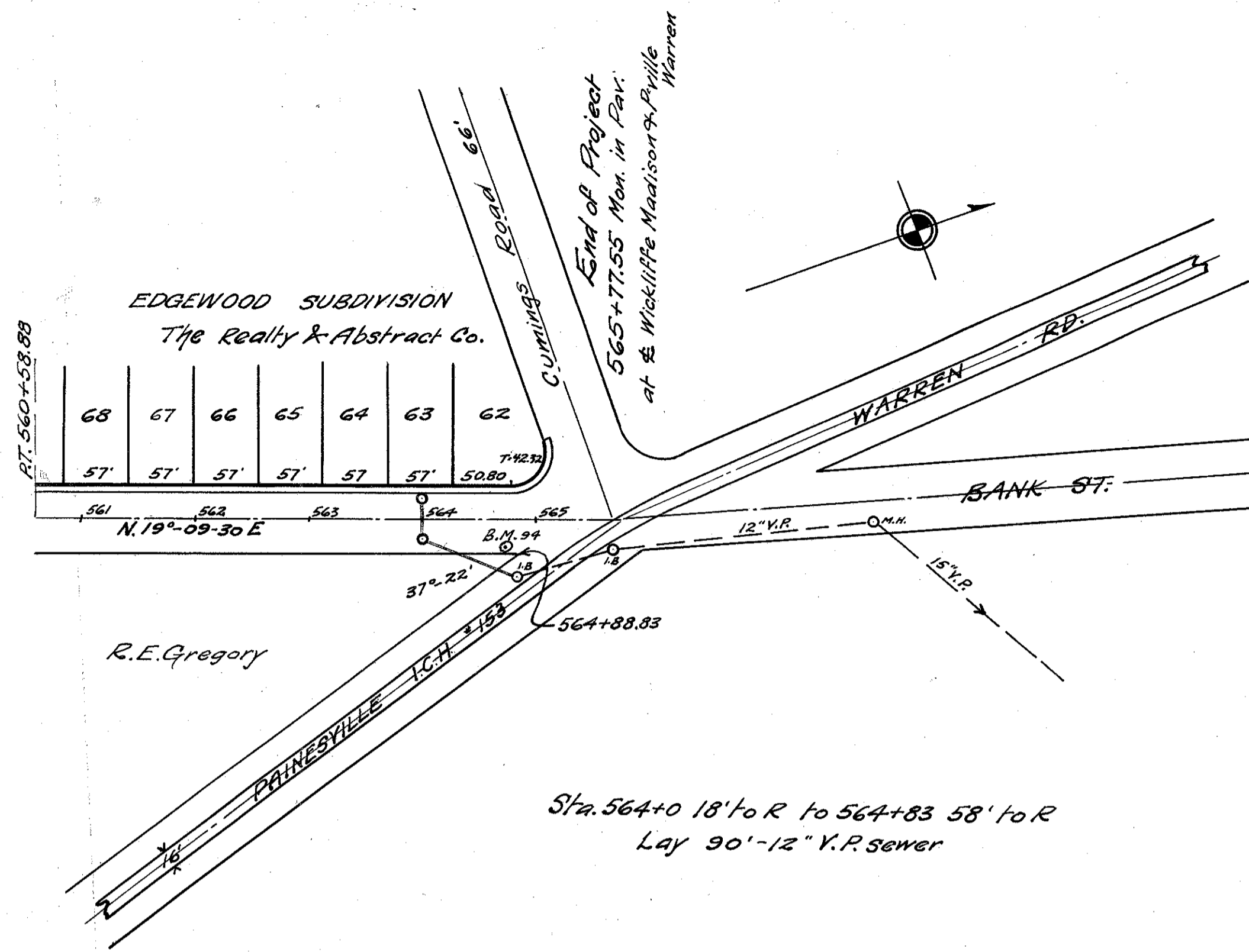


I.C.H. 563 SEC. C.R.D.
LAKE COUNTY



(56)
Sta. 564+0
Build 12"x34" 87d. V.R. (enc) culvert
I.B. on R of L

Sta. 564+0 18' to R to 564+83 58' to R
Lay 90"-12" V.R. sewer

B.M.*94 Sta. 564+73
Spike in side 28" locust
22' to R of E
Elev. = 710.13

