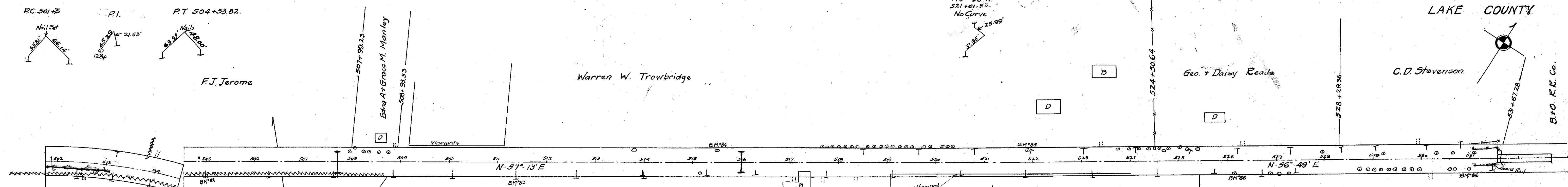


I.C.H. No. 563 SEC. C.&D.
LAKE COUNTY



Extra Form add to time across Form	STA. 500+75 TO 505+38.2			
	LEFT	CENTER LINE	RIGHT	deduct from
0	EL. EDGE 743.27	STATION 500+75	GRADE 743.44	10
0.02	743.33	501+0	743.30	10.07
0.04	743.70	501+50	743.27	10.61
0.05	743.99	PC 501+75	743.36	0-00
0.06	744.32	502+0	743.49	0-39-30
	744.28	502+50	743.95	-58-30
	745.56	503+0	744.55	5-17-28
	746.18	503+50	745.10	4-36-28
0.06	746.48	504+0	745.46	5-59-27
0.04	746.01	504+50	745.33	7-14-27
0.03	745.93	PT 504+53	745.30	7-20-30
0.01	745.29	505+0	745.01	10.31
0.00	744.43	505+38.2	744.60	10

66.189 yds. extra pavement

- BM #82 Sta. 504+98
Spike front Tel. Pole.
18.5' to right of \pm .
Elev. = 746.20
- BM #83 Sta. 511+37
Spike front Tel. Pole.
18' to right of \pm .
Elev. = 745.77
- BM #84 Sta. 515+51
Spike rear 30' Ash.
25.5' to left of \pm .
Elev. = 742.50
- BM #85 Sta. 521+89
Spike rear 36" M.
24' to left of \pm .
Elev. = 742.79
- BM #86 Sta. 526+14
Spike rear 24" Hick.
27' to right of \pm .
Elev. = 736.20
- BM #87 Sta. 530+97
Spike rear 36" M.
20.5' to right of \pm .
Elev. = 724.23

