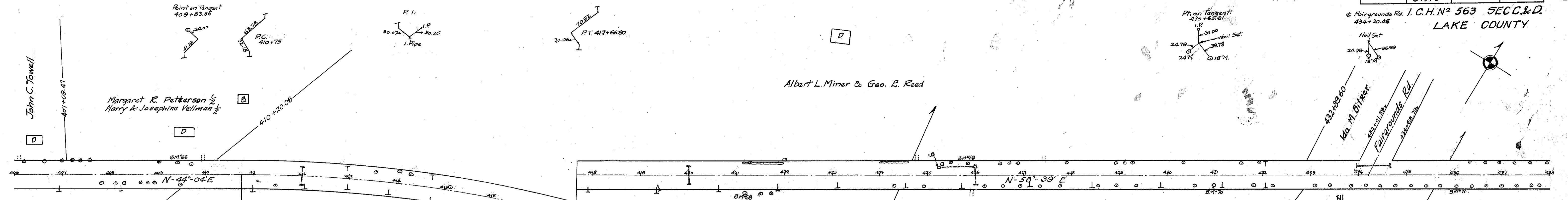


4 Fairgrounds Rd. I. C. H. N. 563 SEC. C. & D. LAKE COUNTY



LEFT		CENTER LINE		RIGHT	
add'l	EL. EDGE	STATION	GRADE REFLECTION	W	EL. EDGE
0	762.20	409+75	762.37	10	762.20
0.09	762.70	410+0	762.18	"	762.01
1.27	761.89	410+50	761.79	"	761.62
1.36	761.79	410+75	761.59	0-00	761.52
1.45	761.68	411+0	761.40	0-18-48	761.33
1.54	761.58	411+50	761.01	0-47-25	760.84
"	761.13	412+0	760.76	1-19-02	760.59
"	761.16	412+50	760.79	1-50-39	760.62
"	761.33	413+0	760.96	2-22-16	760.79
"	761.39	413+50	761.13	2-53-32	760.96
"	761.67	414+0	761.30	3-25-30	761.13
"	762.04	414+50	761.67	3-57-07	761.50
"	762.79	415+0	762.42	4-28-44	762.25
"	763.74	415+50	763.37	5-00-21	763.20
"	764.69	416+0	764.32	5-51-58	764.15
"	764.85	416+50	764.58	6-03-25	764.31
1.54	765.81	417+0	765.54	6-35-12	765.27
1.40	765.66	417+50	765.43	7-06-49	765.26
1.26	765.51	418+0	765.32	7-17-30	765.15
1.23	765.08	418+50	764.89	"	764.85
1.04	764.89	419+0	764.72	"	764.75
0	764.05	419+66.9	764.22	10	764.05

Build 12"x40" steel V.P. (enc.) culvert h.w. on R+L
 Build 12"x40" steel V.P. (enc.) culvert h.w. on R+L
 Build 10"x38" corr. iron pipe culvert I.B. on L h.w. on R
 Build 12"x70" corr. iron pipe culvert 20' L of R 2 h.w.s.
 Lay 78'-12" V.P. sewer cap old I.B.
 Note: Grade line shown is crown of finished pavement.

BM*66 Sta. 409+41 Spike root 24" M. 24' to left of \pm Elev. = 765.41
 BM*67 Sta. 414+28 Spike root 24" M. 21' to left of \pm Elev. = 762.83
 BM*68 Sta. 421+19 Spike root 30" M. 38' to right of \pm Elev. = 761.74
 BM*69 Sta. 425+84 Spike root 24" M. 23' to left of \pm Elev. = 760.31
 BM*70 Sta. 430+97 Spike root 24" M. 22' to right of \pm Elev. = 760.63
 BM*71 Sta. 436+04 Spike root 24" M. 23' to right of \pm Elev. = 759.16

