

I. C. H. N° 563 SEC. C. & D.
LAKE COUNTY

Sta. 376+02.15 to 378+84.54
WEST RETURN

STATION	DEFLECTION
376+02.15	0°-00'-00"
376+25	3°-53'-13"
376+50	8°-09'-29"
376+75	12°-25'-46"
377+0	16°-42'-02"
377+25	20°-58'-19"
377+50	25°-14'-35"
377+75	29°-30'-52"
378+0	33°-47'-08"
378+25	38°-03'-25"
378+50	42°-19'-41"
378+75	46°-35'-58"
378+84.54	48°-13'-45"

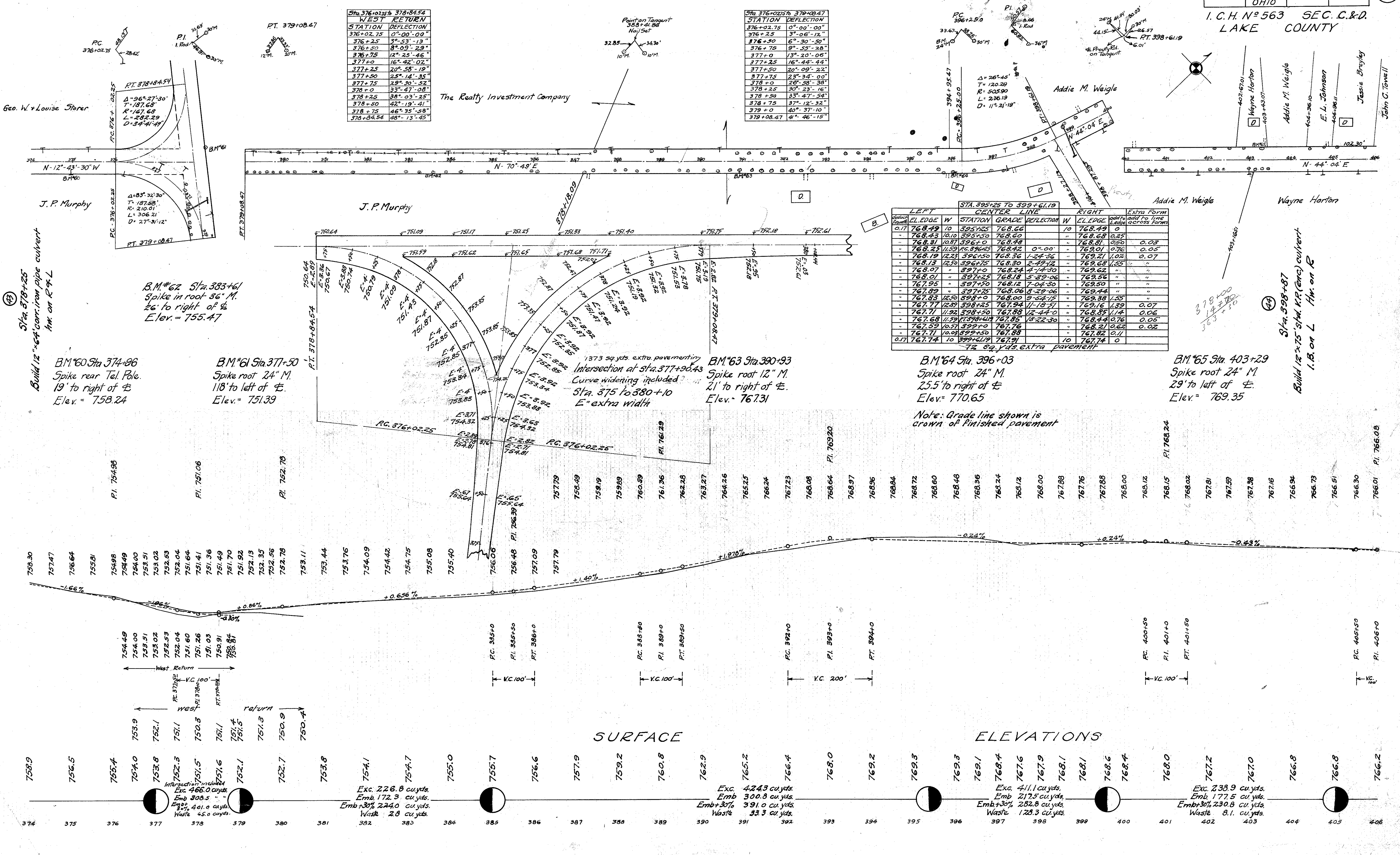
Sta. 376+02.15 to 379+08.47

STATION	DEFLECTION
376+02.15	0°-00'-00"
376+25	3°-06'-12"
376+50	6°-30'-50"
376+75	9°-59'-28"
377+0	13°-20'-06"
377+25	16°-44'-44"
377+50	20°-09'-22"
377+75	23°-34'-00"
378+0	26°-58'-38"
378+25	30°-23'-16"
378+50	33°-47'-54"
378+75	37°-12'-32"
379+0	40°-37'-10"
379+08.47	44°-46'-15"

STA. 395+25 TO 399+61.19

LEFT	CENTER LINE	RIGHT	Extra Form
EL. EDGE W	STATION GRADE DEFLECTION W	EL. EDGE	add to add to Form
0.17 768.49	10 395+25 768.66	10 768.49	0
" 768.43	10.10 395+50 768.60	" 768.68	0.25
" 768.31	10.87 396+0 768.48	" 768.81	0.50
" 768.25	11.59 396+25 768.42	0°-00'	0.75
" 768.19	12.23 396+50 768.36	1°-24'-36"	1.00
" 768.13	12.85 396+75 768.30	2°-49'-12"	1.25
" 768.07	13.45 397+0 768.24	4°-4'-30"	1.50
" 768.01	14.02 397+25 768.18	6°-29'-06"	1.75
" 767.95	14.57 397+50 768.12	8°-24'-30"	2.00
" 767.89	15.10 397+75 768.06	10°-20'-06"	2.25
" 767.83	15.60 398+0 768.00	12°-16'-12"	2.50
" 767.77	16.08 398+25 767.94	14°-12'-24"	2.75
" 767.71	16.54 398+50 767.88	16°-18'-30"	3.00
" 767.68	16.98 398+75 767.82	18°-24'-30"	3.25
" 767.65	17.40 399+0 767.76	" 768.21	3.50
" 767.61	17.80 399+25 767.70	" 768.22	3.75
" 767.57	18.18 399+50 767.64	" 768.23	4.00
0.17 767.74	10 399+61.19 767.91	10 767.74	0

74.84 yds. extra pavement



B.M. #62 Sta. 383+61
Spike in root 36" M.
26' to right of C.
Elev. = 755.47

B.M. #60 Sta. 374+86
Spike rear Tel. Pole.
19' to right of C.
Elev. = 758.24

B.M. #61 Sta. 377+50
Spike root 24" M.
118' to left of C.
Elev. = 751.39

B.M. #63 Sta. 390+93
Spike root 12" M.
21' to right of C.
Elev. = 767.31

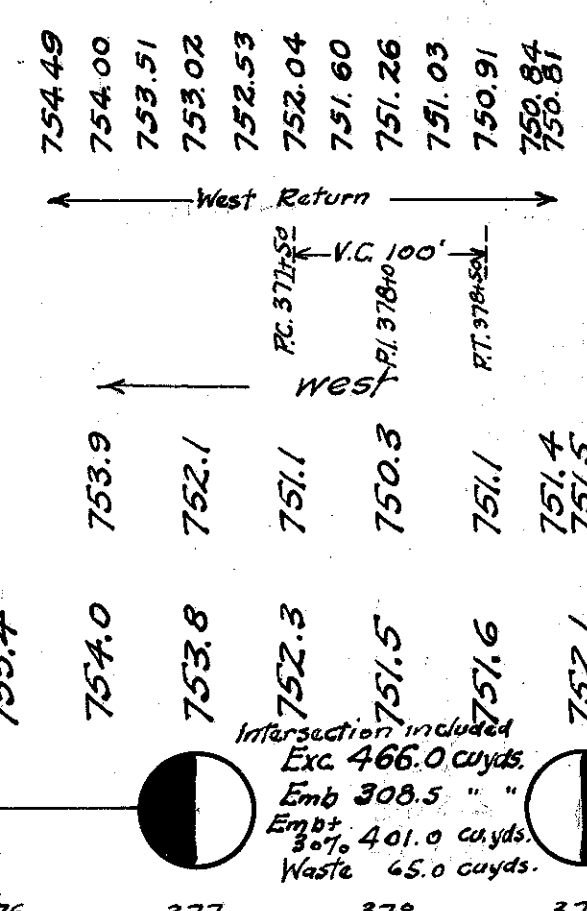
B.M. #64 Sta. 396+03
Spike root 24" M.
25.5' to right of C.
Elev. = 770.65

B.M. #65 Sta. 403+29
Spike root 24" M.
29' to left of C.
Elev. = 769.35

Note: Grade line shown is crown of finished pavement

SURFACE

ELEVATIONS



Exc. 226.8 cu yds.
Emb. 172.3 cu yds.
Emb+30% 244.0 cu yds.
Waste 2.8 cu yds.

Exc. 424.3 cu yds.
Emb. 300.8 cu yds.
Emb+30% 391.0 cu yds.
Waste 33.3 cu yds.

Exc. 411.1 cu yds.
Emb. 217.5 cu yds.
Emb+30% 282.8 cu yds.
Waste 128.3 cu yds.

Exc. 238.9 cu yds.
Emb. 177.5 cu yds.
Emb+30% 230.8 cu yds.
Waste 8.1 cu yds.