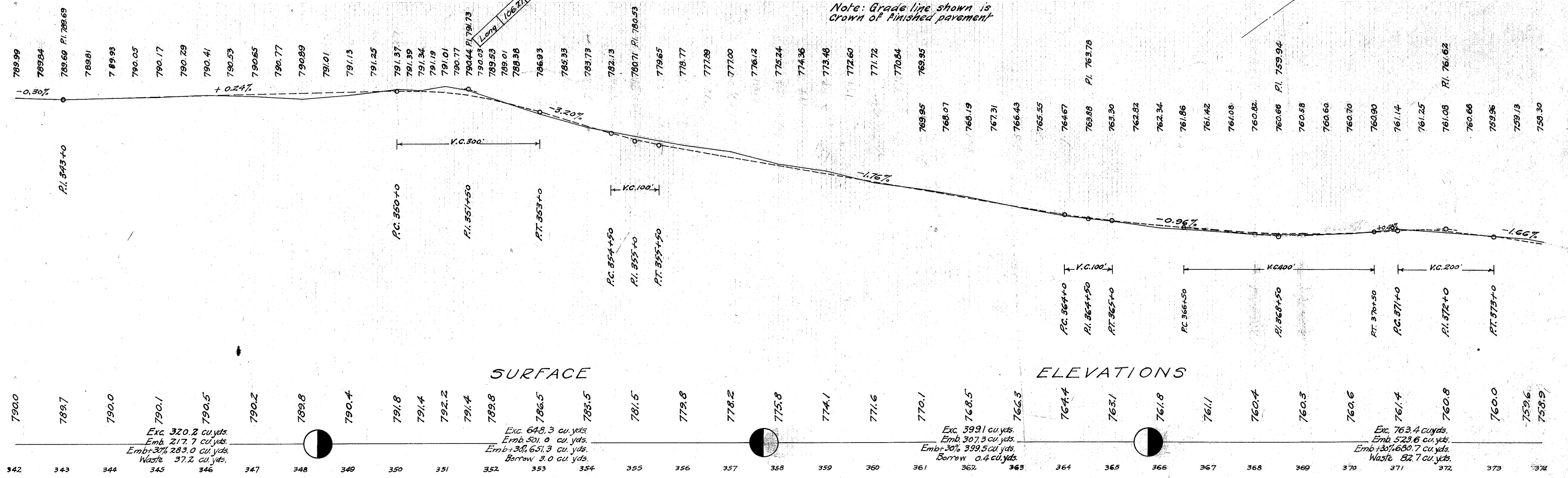
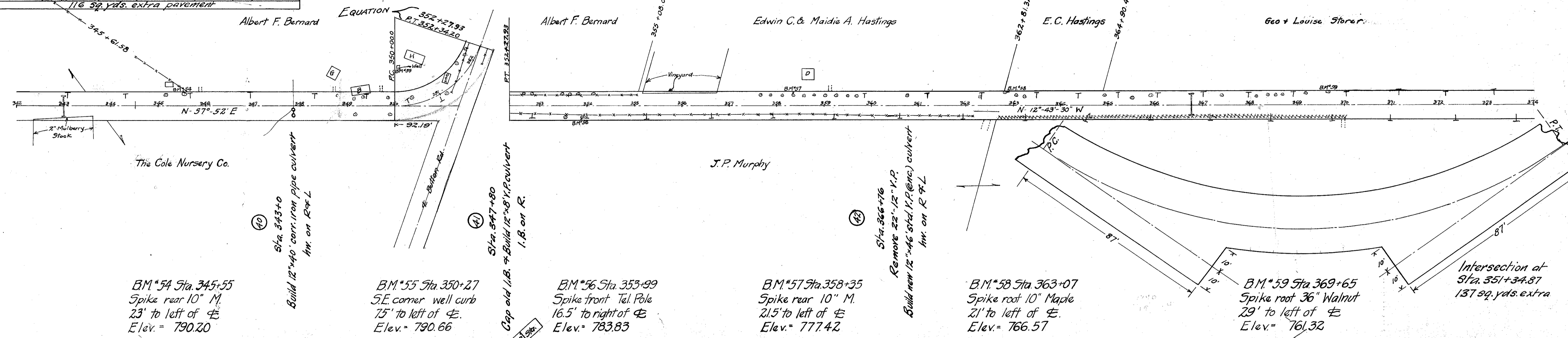


I. C. H. No 563 SEC. C. & D.
LAKE COUNTY

LEFT		CENTER LINE		RIGHT		Extra Form	
EL. EDGE	W	STATION	GRADE	DEFLECTION	W	EL. EDGE	across forms
790.96	10	349+0	791.13		10	790.96	0
791.08	10.72	349+50	791.25			791.92	0.02
791.20	12.81	350+0	791.37	0-00		792.86	1.66
791.22	13.73	350+25	791.39	3-46-03		793.32	2.10
791.17	14.0	350+50	791.34	7-32-07		793.67	2.50
791.02		350+75	791.19	11-18-11		793.52	2.30
790.84		351+0	791.01	15-04-15		793.34	2.10
790.60		351+25	790.77	18-50-18		793.10	1.86
790.27		351+50	790.44	22-36-22		792.77	1.53
789.86	14.0	351+75	790.03	26-22-26		792.36	1.12
789.36	13.88	352+0	789.53	30-08-30		791.88	0.68
788.84	13.21	352+25	789.01	33-54-33		790.65	0.09
788.61	12.81	352+50	788.78	35-17-45		790.27	0.09
788.21	11.67	352+75	788.38			789.51	0.05
786.76	10.21	353+0	786.93			787.22	0.46
785.86	10	353+25	786.03		10	785.86	0

EQUATION 352+34.20 = 352+27.93

Δ = 70°-35'-30"
T = 134.87'
R = 190.09'
L = 234.20'
D = 30°-30'



SURFACE

ELEVATIONS