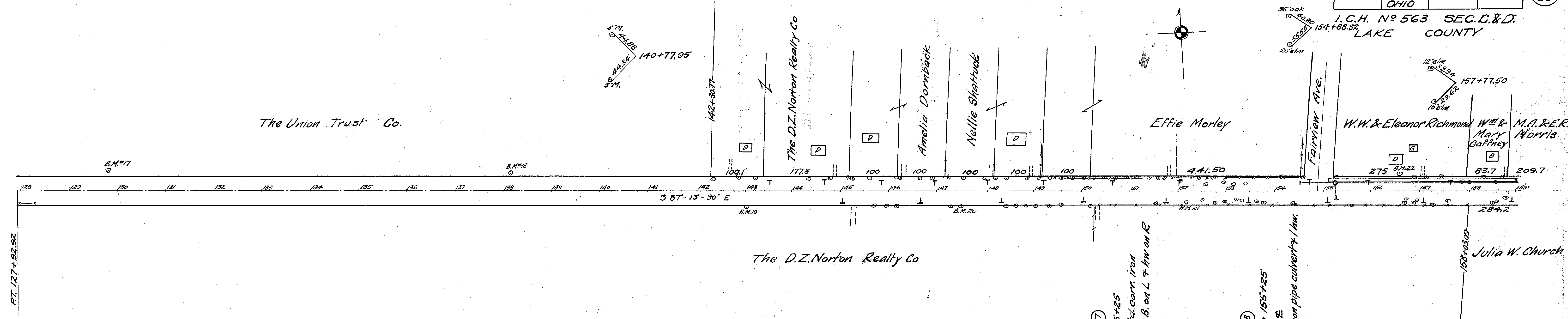


I.C.H. N° 563 SEC. C. & D.
LAKE COUNTY



B.M. #17 Sta. 129+82
Spike in 20' apple
40' to left of \pm
Elev. = 694.98

Note: Grade line shown is
spike in root of finished pavement

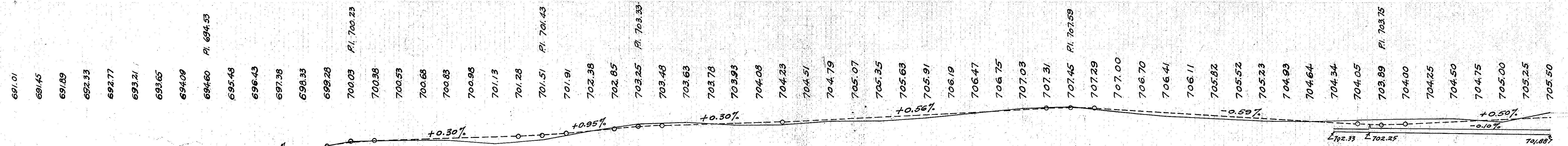
B.M. #18 Sta. 138+17
Spike in root 5" M.
36' to left of \pm
Elev. = 701.34

B.M. #19 Sta. 143+05
Spike in back 18" locust
31' to right of \pm
Elev. = 704.78

B.M. #20 Sta. 147+50
Spike in root 20" elm
30' to right of \pm
Elev. = 709.12

B.M. #21 Sta. 152+14
Spike in 24" elm
27' to right of \pm
Elev. = 705.16

B.M. #22 Sta. 156+60
Spike in 20" elm
36' to left of \pm
Elev. = 705.75



STATION	SURFACE ELEVATION	ELEVATIONS
127	692.5	692.5
128	692.6	692.6
129	692.9	693.4
130	693.4	693.8
131	694.5	694.5
132	695.8	695.8
133	698.3	698.3
134	700.2	700.2
135	700.4	700.4
136	700.4	700.4
137	699.8	699.8
138	700.6	700.6
139	702.2	702.2
140	703.9	703.9
141	704.1	704.1
142	703.8	703.8
143	703.8	703.8
144	704.4	704.4
145	704.4	704.4
146	705.2	705.2
147	706.0	706.0
148	707.2	707.2
149	707.7	707.7
150	706.6	706.6
151	705.7	705.7
152	705.1	705.1
153	704.7	704.7
154	704.6	704.6
155	704.9	704.9
156	705.0	705.0
157	705.2	705.2
158	705.6	705.6
159	706.4	706.4

Exc. 268.5 cu. yds.
Emb. 206.1 cu. yds.
Emb. +30% 267.9 cu. yds.
Waste 0.6 cu. yds.

Exc. 462.9 cu. yds.
Emb. 335.5 cu. yds.
Emb. +30% 436.1 cu. yds.
Waste 26.8 cu. yds.

Exc. 261.5 cu. yds.
Emb. 192.1 cu. yds.
Emb. +30% 249.7 cu. yds.
Waste 11.9 cu. yds.

Exc. 223.7 cu. yds.
Emb. 167.1 cu. yds.
Emb. +30% 217.1 cu. yds.
Waste 6.6 cu. yds.

Exc. 367.6 cu. yds.
Emb. 266.8 cu. yds.
Emb. +30% 346.8 cu. yds.
Waste 20.8 cu. yds.