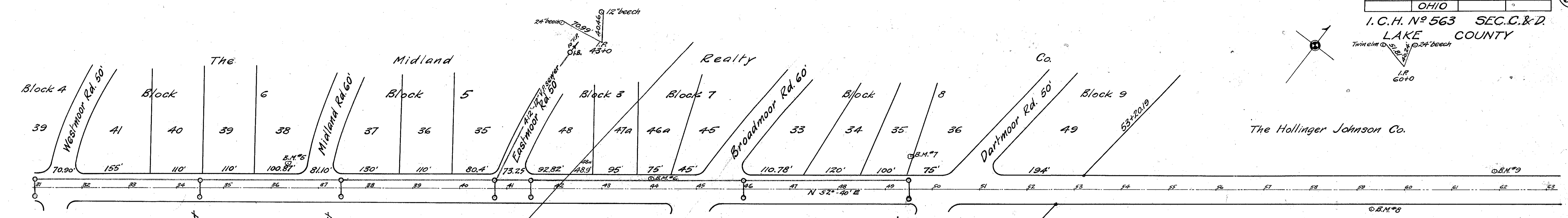
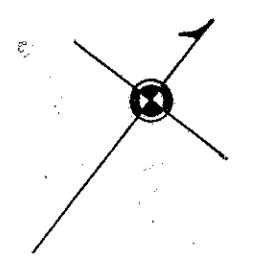


I. C. H. N° 563 SEC. C. & D.
LAKE COUNTY



Build 12" x 34" std. V.P. (enc.) culvert I.B. on R+L
 Sta. 31+0

Build 12" x 34" std. V.P. (enc.) culvert I.B. on R+L
 Sta. 34+50

Build 12" x 34" std. V.P. (enc.) culvert I.B. on R+L
 Sta. 37+50

Build 12" x 34" std. V.P. (enc.) culvert I.B. on R+L
 Sta. 40+75

Build 12" x 34" std. V.P. (enc.) culvert I.B. on R+L
 Sta. 41+50

Build 12" x 34" std. V.P. (enc.) culvert I.B. on R+L
 Sta. 46+0

Build 12" x 34" std. V.P. (enc.) culvert I.B. on R+L
 Sta. 49+50

Sta. 31 to 49+50
 Lay 1850'-12" V.P. sewer 18' to L of Φ

Sta. 40+75 18' to L then north in L ditch line of Eastmoor Rd. to I.B.
 Lay 412'-12" V.P. sewer

Note: Grade line shown is crown of finished pavement

B.M.#5 Sta. 36+35
 Spike in root 36" butternut
 45' to left of Φ
 Elev. = 711.06

B.M.#6 Sta. 44+05
 Spike in root 30" beech
 20' to left of Φ
 Elev. = 711.30

B.M.#7 Sta. 49+55
 Spike in 4" elm
 70' to left of Φ
 Elev. = 711.47

B.M.#8 Sta. 59+28
 Spike in root 24" M.
 40' to right of Φ
 Elev. = 709.14

B.M.#9 Sta. 61+90
 Spike in back root 24" M.
 40' to left of Φ
 Elev. = 708.71

