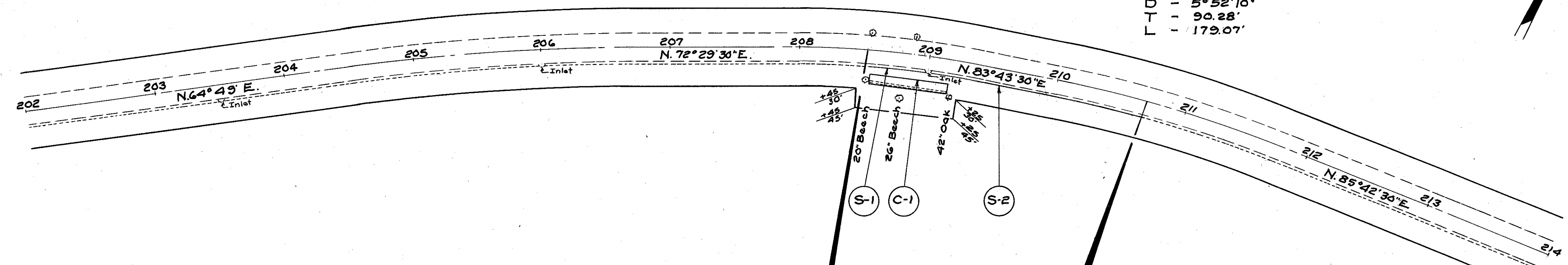
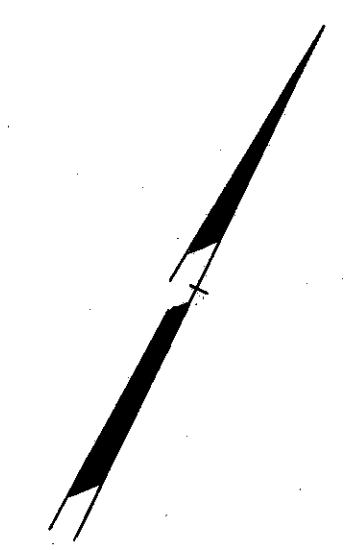


LAKE COUNTY
S.H. 520 SEC. C (PT)
S.H. 563 SEC. B (PT)

PI - Sta 205+59.61
Δ - 7°40'30" Rt
R - 1634.09'
D - 3°30'24"
T - 109.61'
L - 218.89'

PI - Sta 208+71.33
Δ - 11°14' Rt
R - 725.30'
D - 7°54'
T - 71.33'
L - 142.20'

PI - Sta 210+90.28
Δ - 10°34' Rt
R - 976.28'
D - 5°52'10"
T - 90.28'
L - 179.07'



Scale 1"=50'

BEGIN PART 2
STA. 208+52

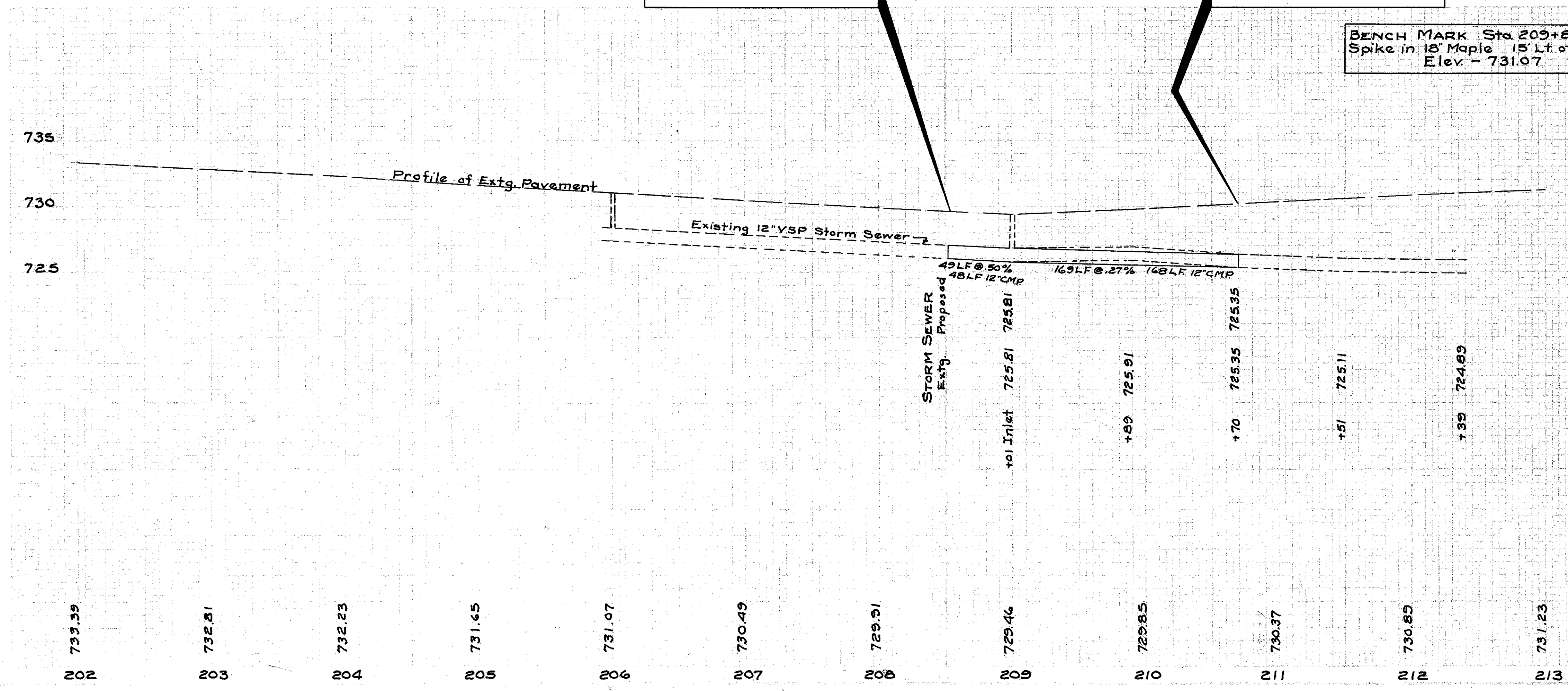
END PART 2
STA 210+70

BENCH MARK Sta. 209+81
Spike in 18' Maple 15' Lt. of \pm
Elev. - 731.07

TREES REMOVED		
Station	Side	Description
208+79	Rt	26' Beech

STRUCTURES UNDER 20' SPAN			
MARK	STATION	DESCRIPTION	SHEET No
C-1	208+85	Cellular Retaining Wall	5

STORM SEWERS					
MARK	STATION		SIDE	I-2 12" C.M.P.	12" Pipe Ram'd & Stored
	From	To		Lin. Ft.	Lin. Ft.
S-1	208+52	209+00	Rt	48	48
S-2	209+02	210+70	Rt	168	168
Totals				216	216



SUMMARY PART 2			
ITEM	DESCRIPTION	QUANTITY	UNIT
ROADWAY			
E-12	Pipe Removed and Stored 15" and under	216	Lin. Ft.
I-2	12" Storm Sewers Sec. M-6.4 (c)	216	Lin. Ft.
E-305	Seeding and Protecting Roadway Areas	400	Sq. Yds.
L-9	Commercial Fertilizer (4-12-4)	72	Lbs.
E-9	Removal of Trees and Stumps	1	Each
RETAINING WALL			
E-2	Excavation for Structures	178	Cu. Yds.
E-4	Borrow	180	Cu. Yds.
I-3	6" Roadway Drainage Sec. M-6.4 (c)	10	Lin. Ft.
I-4	6" Underdrains Sec. M-6.4 (b)	54	Lin. Ft.
I-4	6" Pipe Outlets for Underdrains Sec. M-6.4 (c)	20	Lin. Ft.
I-5	6" Pipe Specials Sec. M-6.4 (c)	5	Each
S-24	Removal of Existing Structures	1	Lum.
55-132	Precast reinforced concrete cellular retaining wall or galvanized metal cellular retaining wall	760	Sq. Ft.