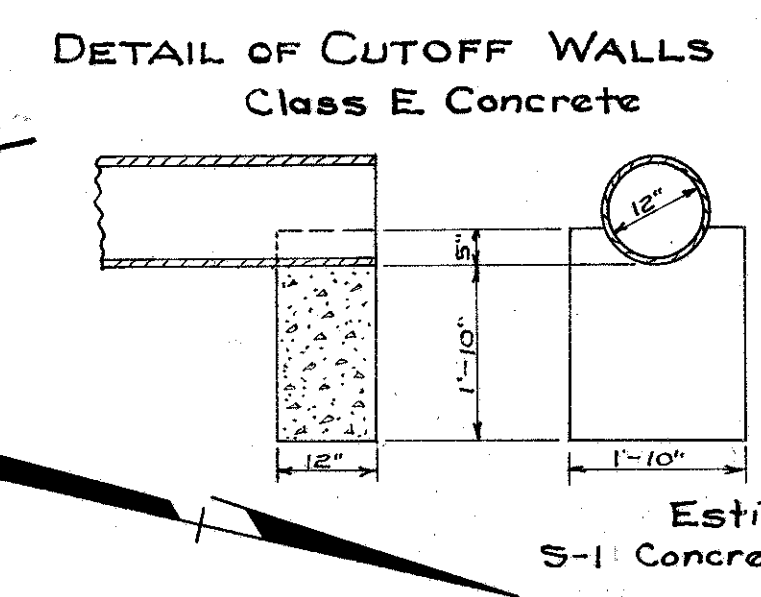
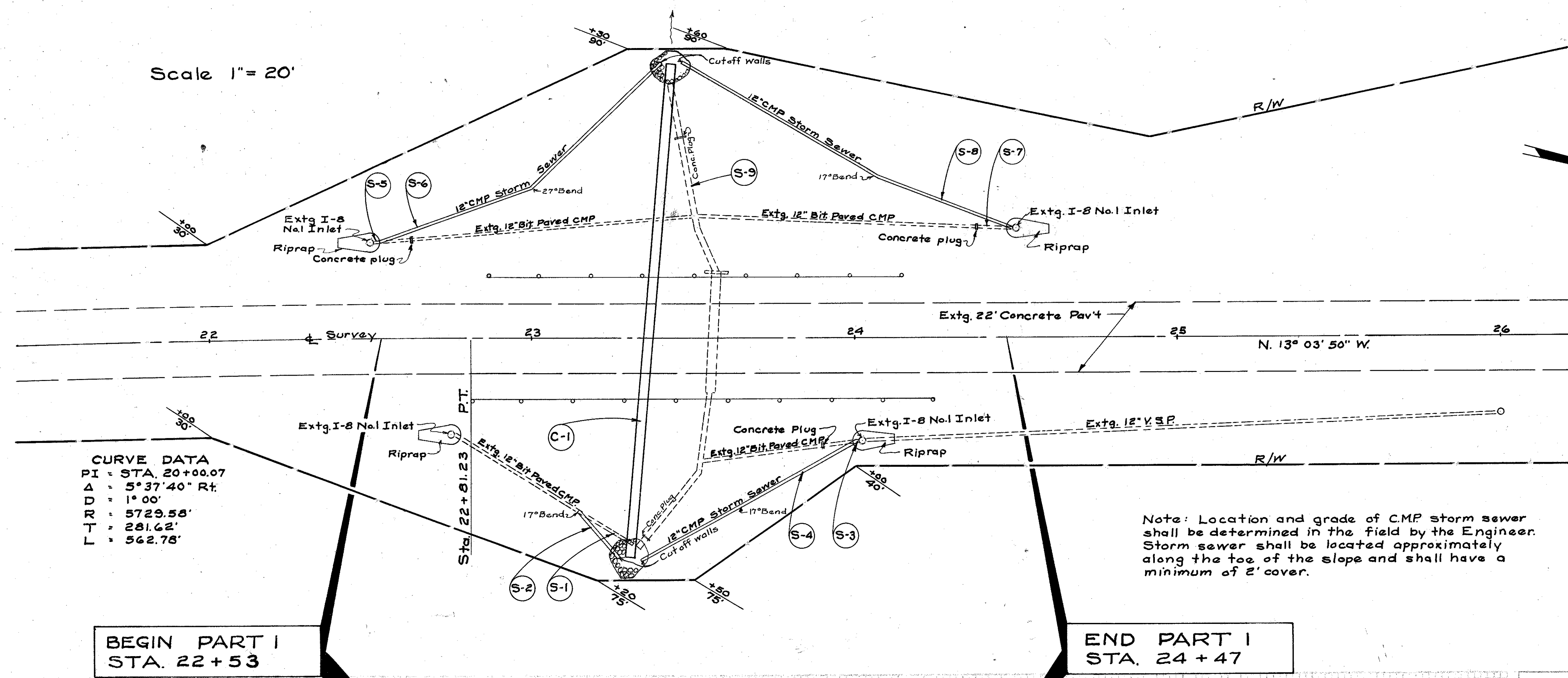
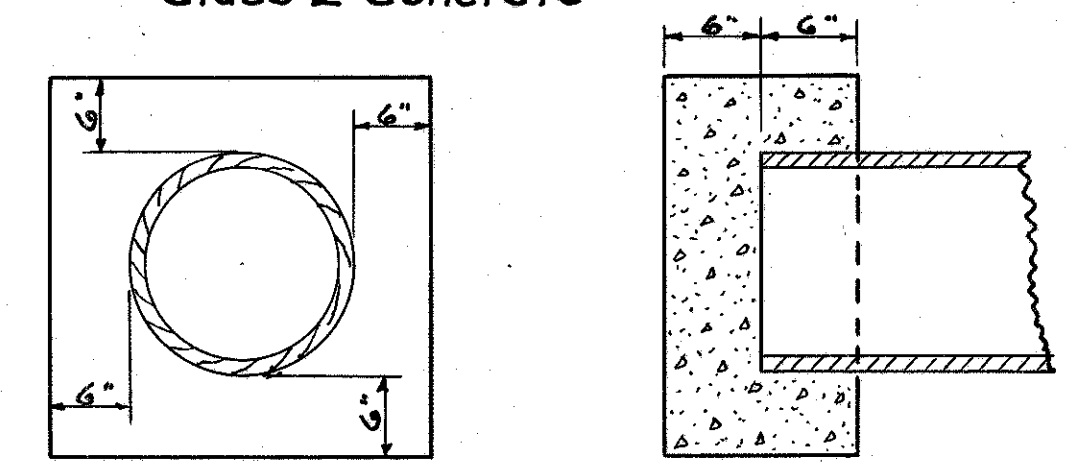


Scale 1" = 20'



Estimated Quantities (each cutoff)
 S-1 Concrete Class E for 12\"/>

DETAIL OF CONCRETE PLUG Class E Concrete



Estimated Quantities (each plug)
 S-1 Concrete Class E for 12\"/>

CURVE DATA
 PI = STA. 20+00.07
 Δ = 5° 37' 40" Rt.
 DD = 1° 00'
 RR = 5729.58'
 TT = 281.62'
 L = 562.78'

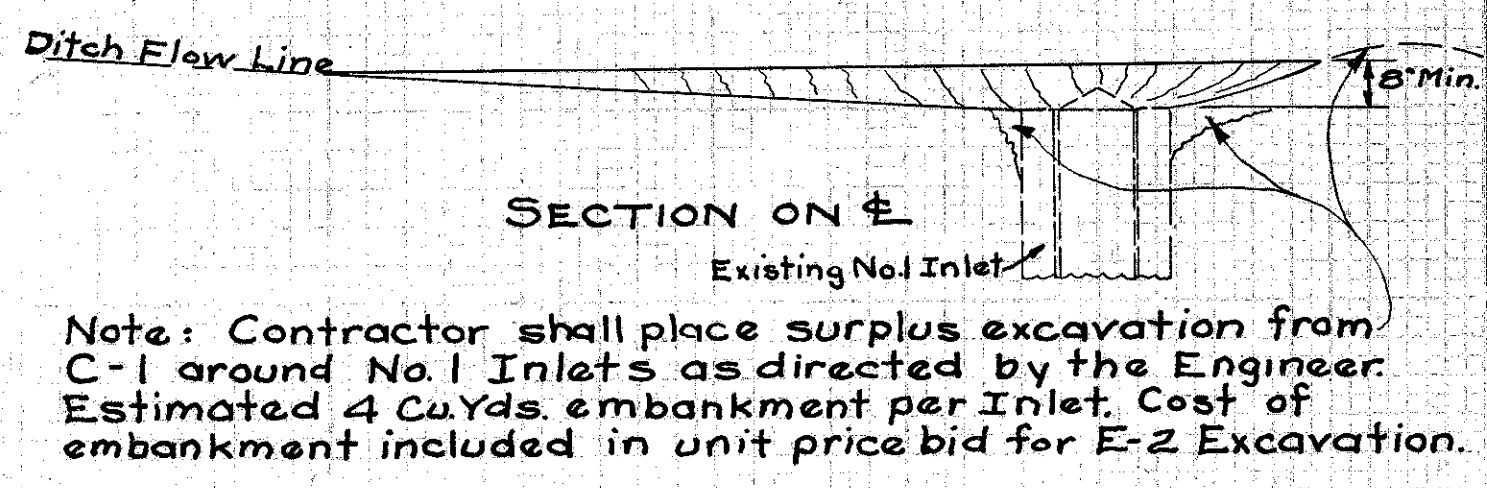
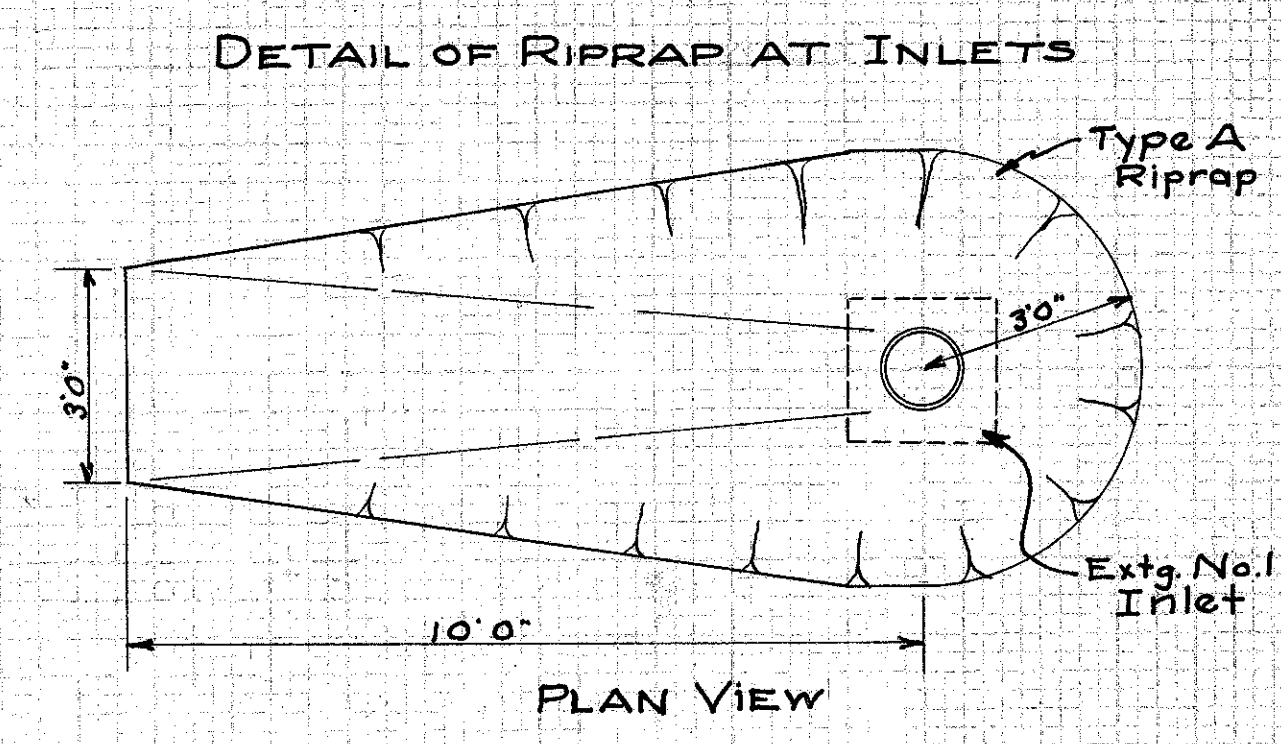
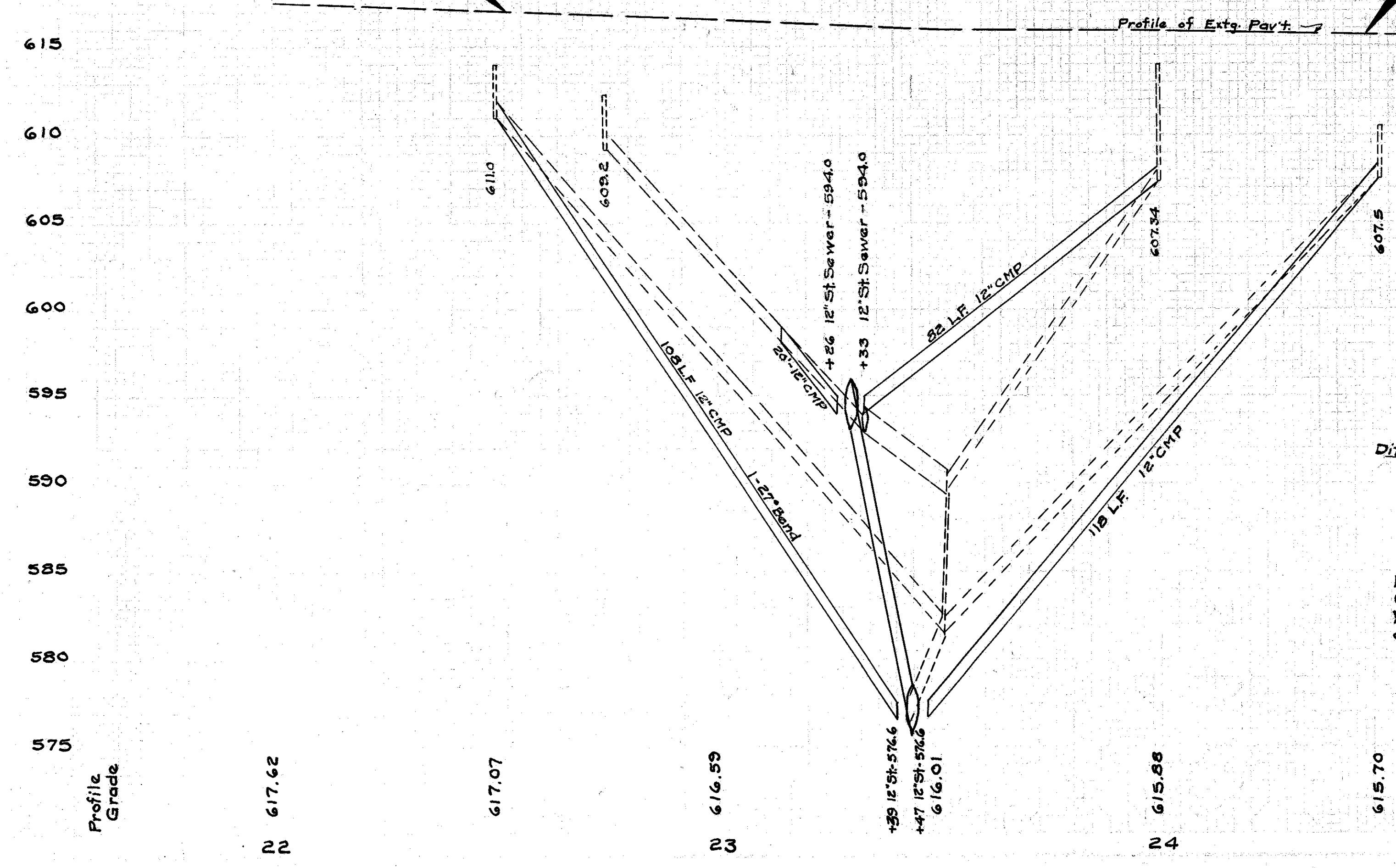
Note: Location and grade of CMP storm sewer shall be determined in the field by the Engineer. Storm sewer shall be located approximately along the toe of the slope and shall have a minimum of 2' cover.

STRUCTURES UNDER 20' SPAN

MARK	STATION	DESCRIPTION	SHEET No.
C-1	23+35	Structural Steel Plate Lining	3

BEGIN PART I
 STA. 22+53

END PART I
 STA. 24+47



Note: Contractor shall place surplus excavation from C-1 around No. 1 Inlets as directed by the Engineer. Estimated 4 Cu.Yds. embankment per Inlet. Cost of embankment included in unit price bid for E-2 Excavation.

STORM SEWERS

Mark	Side	Station		Riprap Type A 12\"/>					
		From	To						
S-1	Rt	23+13	23+31	6	20	20	1	.2	
S-2	Rt	23+13	23+26						
S-3	Rt	23+89	23+99	6	10	20	1	.1	
S-4	Rt	23+33	23+59	6	10	20	82	1	.2
S-5	Lt	22+53	22+63	6	10	20	1	.1	
S-6	Lt	22+53	23+39	6	10	20	108	1	.2
S-7	Lt	24+37	24+47	6	10	20	1	.1	
S-8	Lt	23+47	24+47	6	10	20	118	1	.2
S-9	Lt & Rt	23+35	23+35	6	10	20	1	.3	
Totals		24	30	20	20	308	3	1.4	

* Carried to Structure Summary

GENERAL SUMMARY PART I

ITEM	DESCRIPTION	QUANTITY	UNIT
ROADWAY			
E-12	12\"/>	20	Lin. Ft.
E-12	12\"/>	30	Lin. Ft.
E-12	12\"/>	20	Lin. Ft.
I-2	12\"/>	308	Lin. Ft.
I-5	12\"/>	4	Each
I-6	Relaying 12\"/>	20	Lin. Ft.
I-10	Riprap Type A grouted	24	Sq. Yd.
E-305	Seeding & Protecting Roadway Areas	1200	Sq. Yd.
L-9	Commercial Fertilizer (4-12-4)	216	Lbs.
STRUCTURES UNDER 20' SPAN			
S-1	Concrete for Structures Class E	32	Cu. Yds.
S5-186	Bituminous Coated, Paved Invert, Tunnel Liner Plate as per plan	153	Lin. Ft.
E-2	Excavation for Structures	80	Cu. Yds.
I-10	Riprap Type A grouted	25	Sq. Yd.