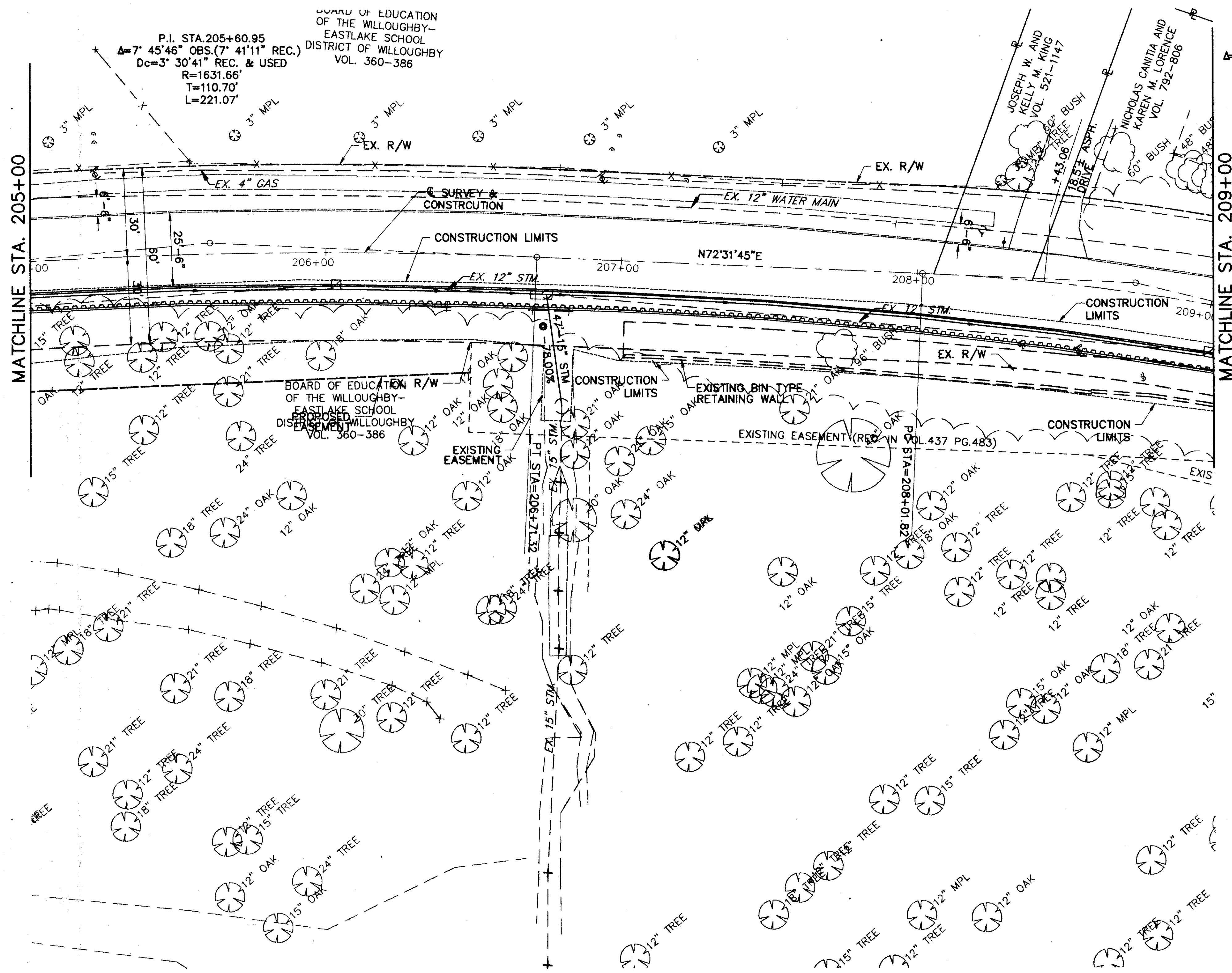
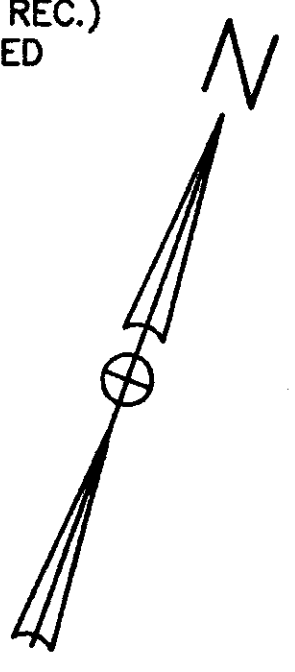


DATE: 09-16-96 - TIME: 11:51 - H:\CT\93119\CAD\9311923B.DWG



P.I. STA.205+60.95
 $\Delta=7^{\circ} 45'46''$ OBS.($7^{\circ} 41'11''$ REC.)
 $Dc=3^{\circ} 30'41''$ REC. & USED
 $R=1631.66'$
 $T=110.70'$
 $L=221.07'$

P.I. STA.208+73.02
 $\Delta=11^{\circ} 11'44''$ OBS.($11^{\circ} 12'58''$ REC.)
 $Dc=7^{\circ} 53'14''$ REC. & USED
 $R=726.43'$
 $T=71.20'$
 $L=141.94'$



FOR RETAINING WALL TYPICAL SECTION SEE SHEET 31.
 FOR ELEVATION OF WALL SEE SHEET 35.
 FOR RETAINING WALL DETAILS SEE SHEET 36.
 FOR SOIL BORING LOGS SEE SHEETS 37-40.

 CT Consultants, Inc. Engineers - Architects - Planners <small>Wilmington - Raleigh - Charlotte - Norfolk - Columbia - Washington</small>	DATE	8/95
	REVIEWED	J.E.A.
	DESIGNED	J.P.R.
	CHECKED	J.P.R.
COUNTY STA. 205+00 STA. 209+00		STRUCTURE FILE NUMBER REVISIONS 8/95 8/95
SITE PLAN RETAINING WALLS ALONG S.R. 84		
LAK - 84 - 5.04		
3 / 6		
33 44		