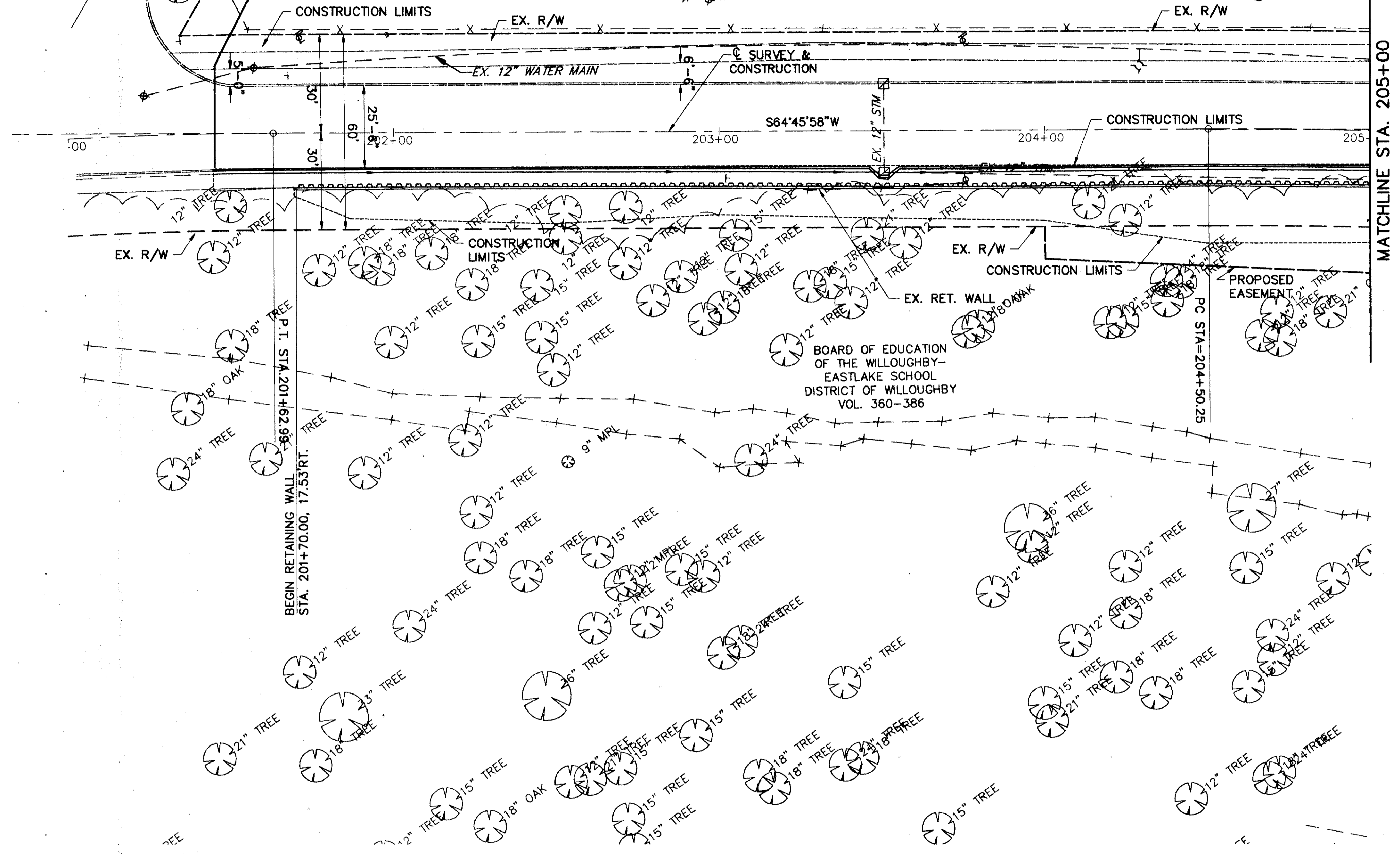
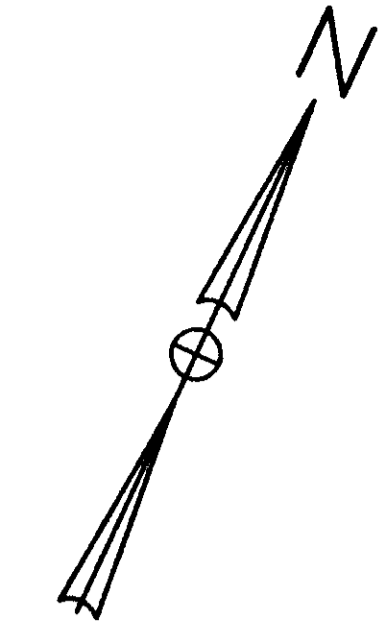


P.I. STA. 200+82.83
 $\Delta=7' 4'48''$ OBS. ($7' 20'48''$ REC.)
 $Dc=4' 30'50''$ REC. & USED
 $R=1269.32'$
 $T=80.38'$
 $L=160.54'$

BEGIN WORK
 STA. 201+45.00

BOARD OF EDUCATION
 OF THE WILLOUGHBY-
 EASTLAKE SCHOOL
 DISTRICT OF WILLOUGHBY
 VOL. 360-386

P.I. STA. 205+60.95
 $\Delta=7' 45'46''$ OBS. ($7' 41'11''$ REC.)
 $Dc=3' 30'41''$ REC. & USED
 $R=1631.66'$
 $T=110.70'$
 $L=221.07'$



GENERAL QUANTITIES FOR RETAINING WALL

ITEM	QUANTITY	UNITS	DESCRIPTION
504	33,264	SQ. FT.	STEEL SHEET PILING LEFT IN PLACE, AS PER PLAN
SPECIAL	132	EACH	TIEBACK
SPECIAL	1	EACH	FAILURE TEST
SPECIAL	2	EACH	CREEP TEST
SPECIAL	12	EACH	PERFORMANCE TEST
SPECIAL	118	EACH	PROOF TEST

THESE QUANTITIES HAVE BEEN CARRIED TO GENERAL SUMMARY SHEET 14.

FOR RETAINING WALL TYPICAL SECTION SEE SHEET 31.
 FOR ELEVATION OF WALL SEE SHEETS 35.
 FOR RETAINING WALL DETAILS SEE SHEET 36.
 FOR SOIL BORING LOGS SEE SHEETS 37-40.

DATE: 09-17-96 - TIME: 11:47 - H:\CT\93119\CAD\9311922B.DWG

CT Consultants, Inc.
 Engineers - Architects - Planners
 Willoughby - Mentor - Columbus - West Chester - Youngstown

DATE	8/95	DESIGNED	8/95	DRAWN	8/95
REVIEWED	J.L.A.	CHECKED	J.P.R.	REVISION	
STRUCTURE FILE NUMBER					

LAKE COUNTY
 STA. 201+00
 STA. 205+00

SITE PLAN
 RETAINING WALLS
 ALONG S.R. 84

LAK - 84 - 5.04

2 / 6

32
44