

BEGIN WORK
STA. 198+70.00

P.I. STA. 200+82.83
Δ=7° 4'48" OBS.(7° 20'48" REC.)
Dc=4' 30'50" REC. & USED
R=1269.32'
T=80.38'
L=160.54'

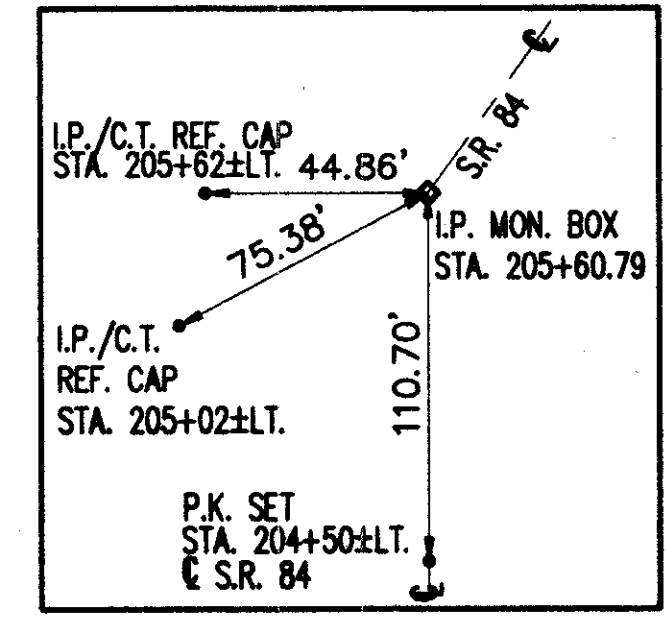
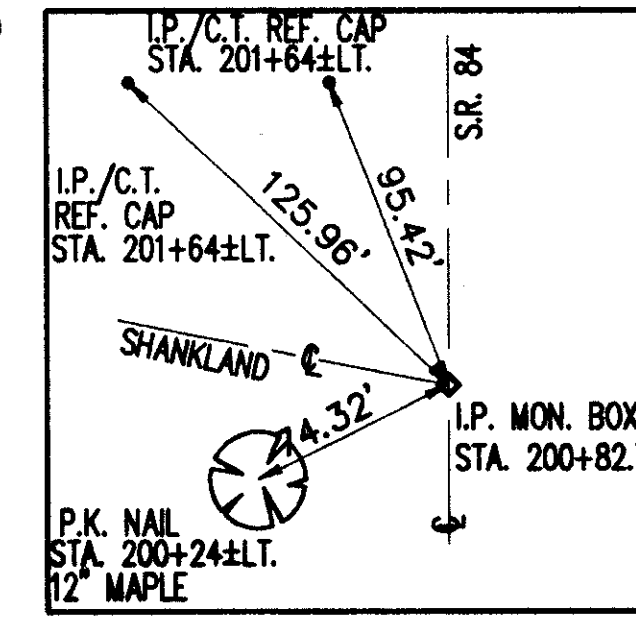
BEGIN PROJECT
STA. 201+70.00

STP

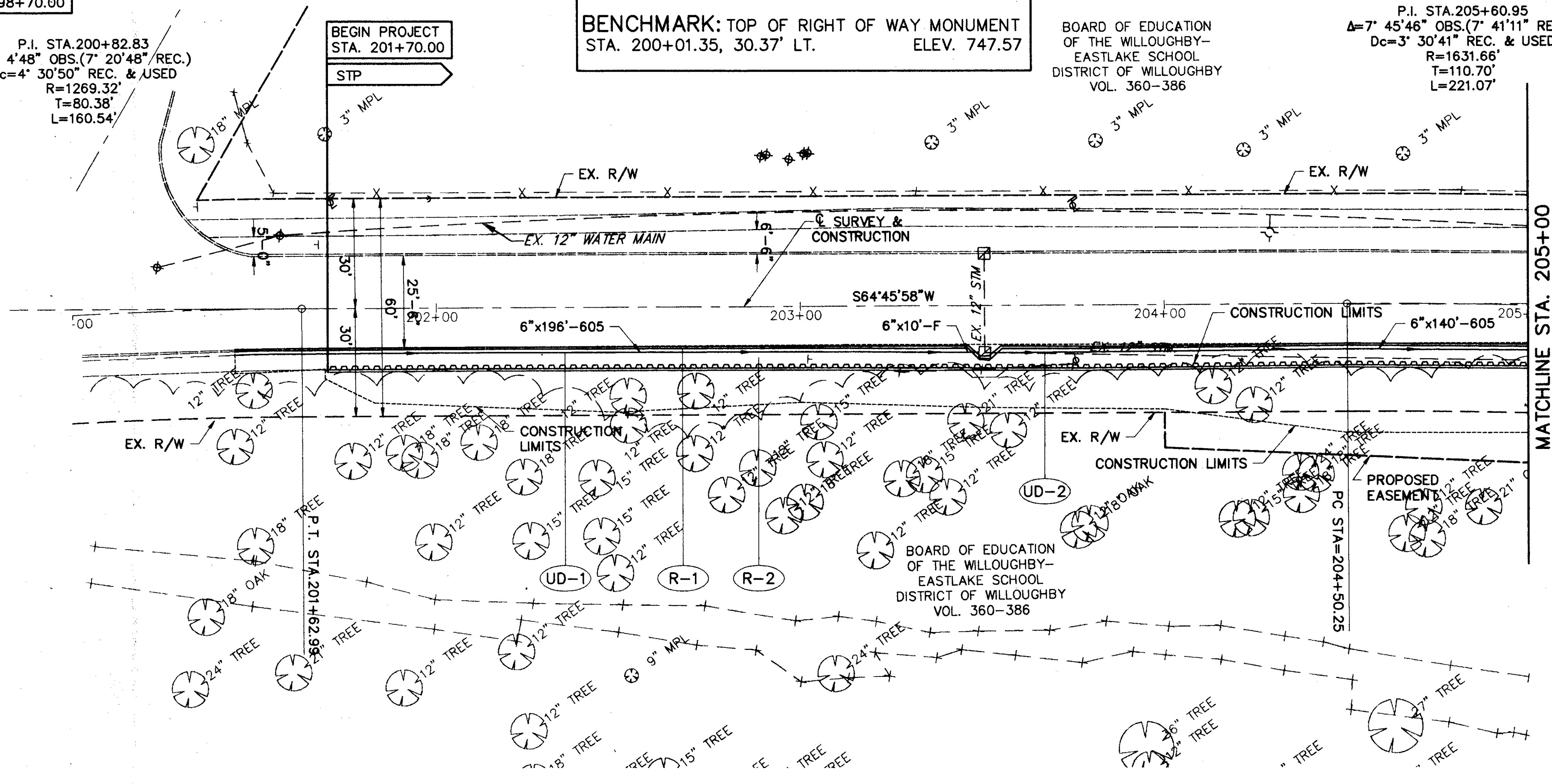
BENCHMARK: TOP OF RIGHT OF WAY MONUMENT
STA. 200+01.35, 30.37' LT. ELEV. 747.57

BOARD OF EDUCATION
OF THE WILLOUGHBY-
EASTLAKE SCHOOL
DISTRICT OF WILLOUGHBY
VOL. 360-386

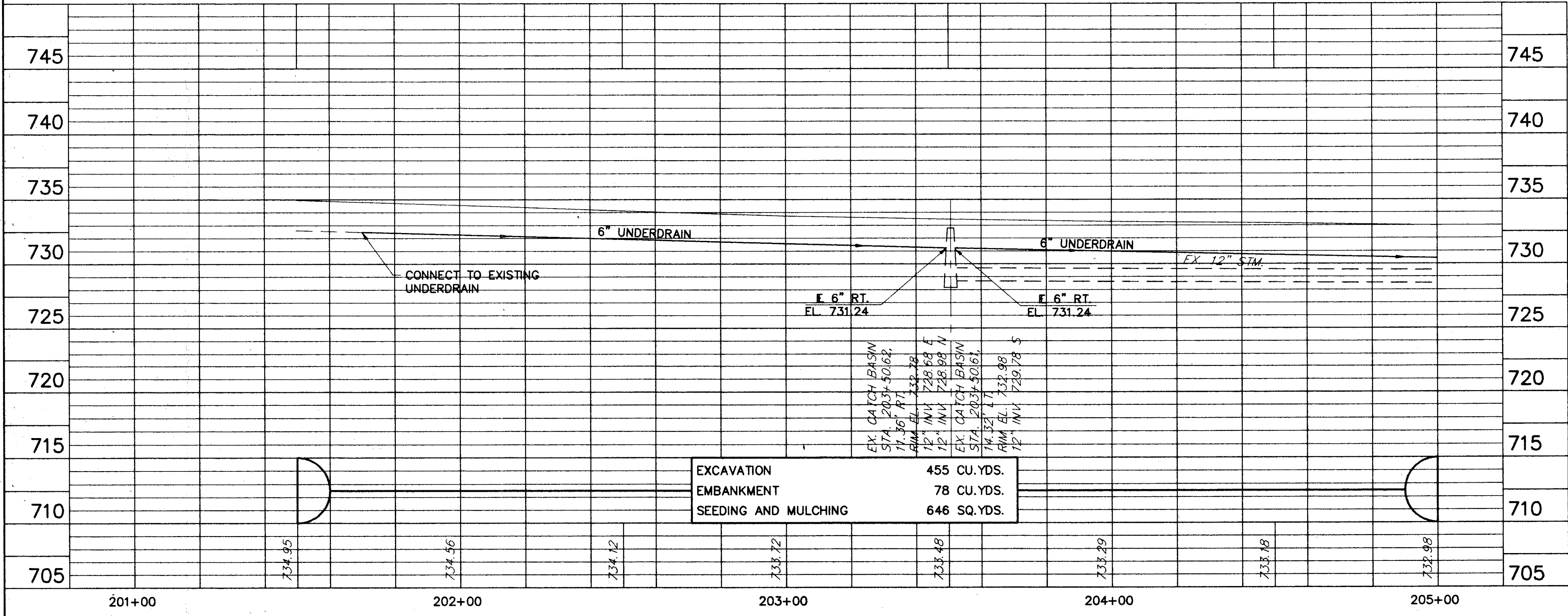
P.I. STA. 205+60.95
Δ=7° 45'46" OBS.(7° 41'11" REC.)
Dc=3' 30'41" REC. & USED
R=1631.66'
T=110.70'
L=221.07'



CALCULATED
R.I.P. 10-95
CHECKED
D.J.W. 10-95



MATCHLINE STA. 205+00



PLAN AND PROFILE
STA. 201+00 TO STA. 205+00

LAK - 84 - 5.04

FOR TYPICAL SECTIONS SEE SHEETS 2-5.
FOR GENERAL SUMMARY SEE SHEET 13-14.
FOR SUB-SUMMARY CHARTS SEE SHEETS 15.
FOR CROSS SECTIONS SEE SHEETS 19-30.
FOR RETAINING WALL DETAILS SEE SHEETS 31-36.

DATE: 09-16-96 - TIME: 11:03 - H:\CT\93119\CAD\93119068.DWG