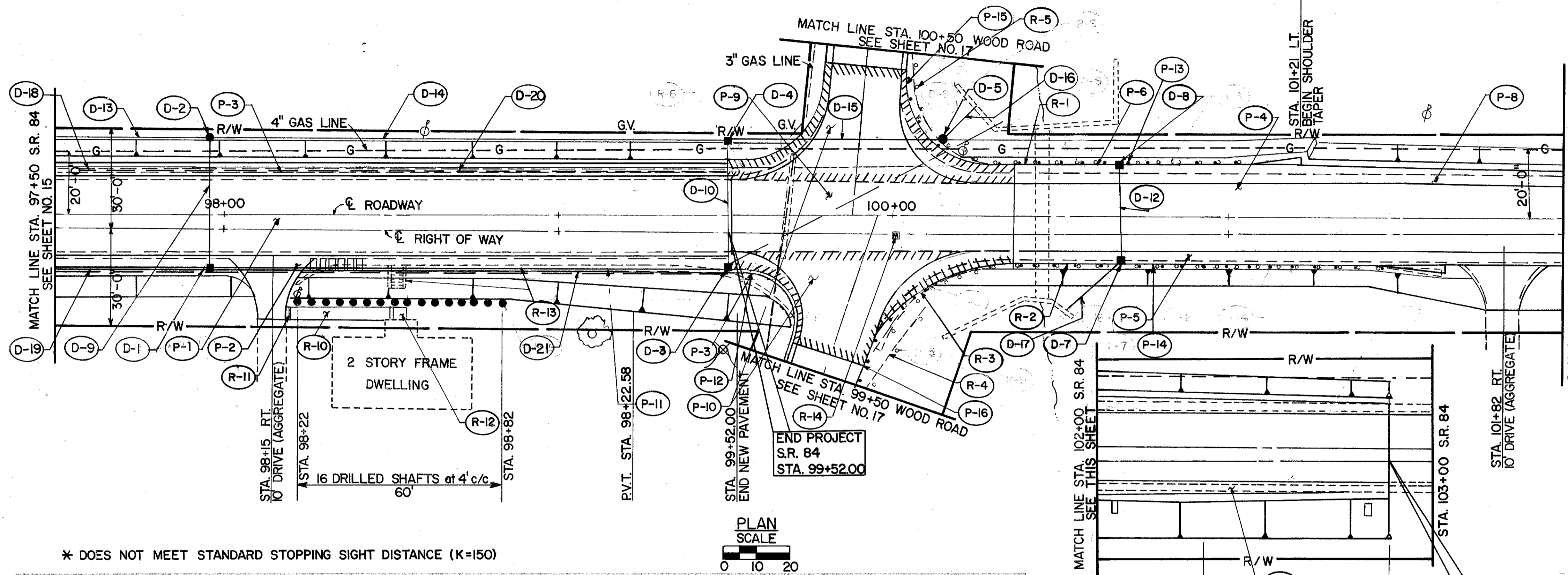
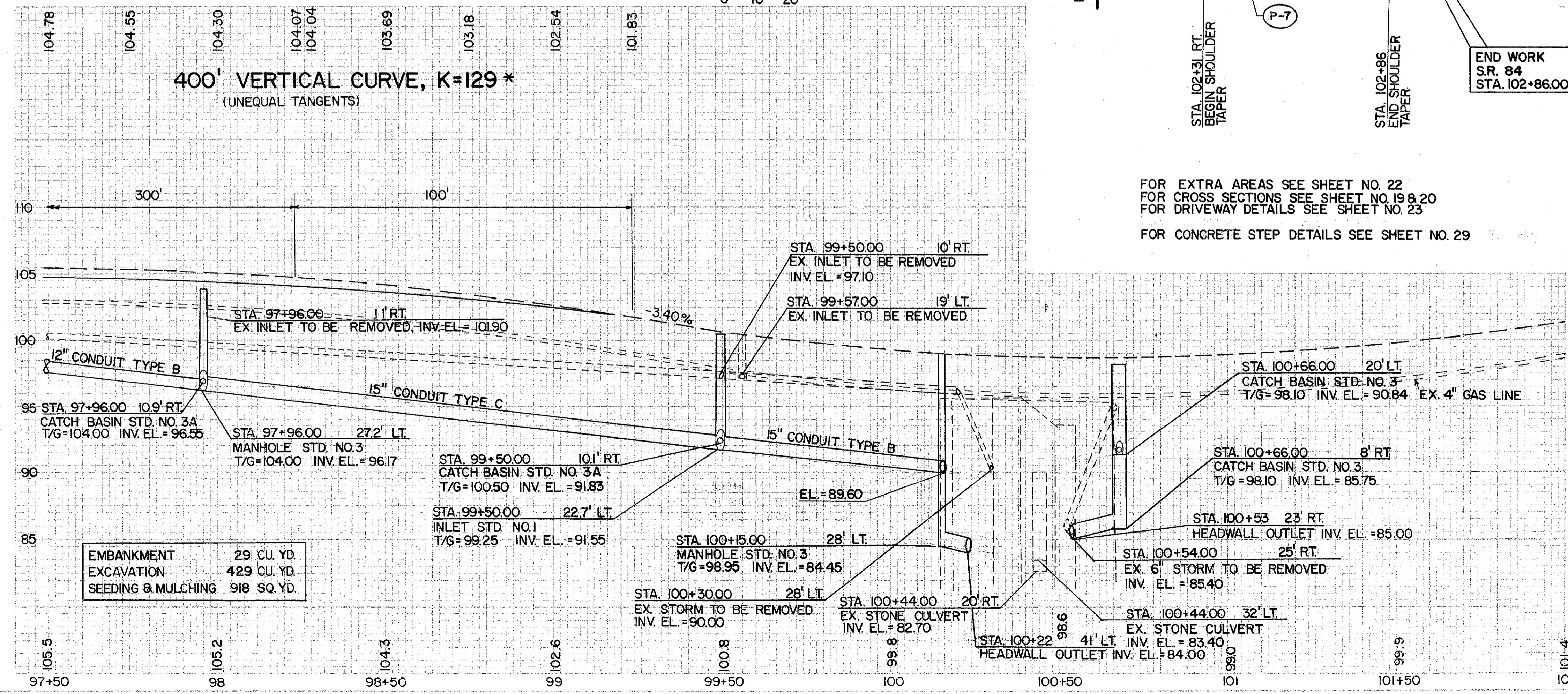
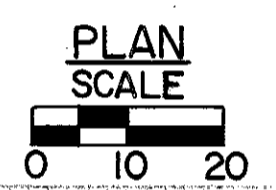


BENCHMARK-R.R. SPIKE IN POLE  
#277348 N.E. CORNER OF S.R. 84  
AND WOOD RD., ELEV.=100.00



\* DOES NOT MEET STANDARD STOPPING SIGHT DISTANCE (K=150)



FOR EXTRA AREAS SEE SHEET NO. 22  
FOR CROSS SECTIONS SEE SHEET NO. 19 & 20  
FOR DRIVEWAY DETAILS SEE SHEET NO. 23  
FOR CONCRETE STEP DETAILS SEE SHEET NO. 29

| REF. NO. | STATION TO STATION     | SIDE | ESTIMATED QUANTITIES                   | REF. NO. | STATION TO STATION     | SIDE | TOTALS |
|----------|------------------------|------|--|----------|------------------------|------|--------|
| D-1      | 97+96.00               | RT   | 6" SHALLOW PIPE UNDERDRAIN AS PER PLAN | P-11     | 97+50.00 TO 99+56.00   | RT   | 400    |
| D-2      | 97+96.00               | LT   | CATCH BASIN STANDARD NO. 3A            | P-12     | 100+33.50 TO 101+21.00 | RT   | 206    |
| D-3      | 97+96.00               | RT   | CATCH BASIN STANDARD NO. 3A            | P-13     | 100+33.50 TO 101+21.00 | LT   | 20     |
| D-4      | 99+50.00               | RT   | INLET STANDARD NO. 1-I                 | P-14     | 100+30.50 TO 101+68.00 | RT   | 206    |
| D-5      | 99+50.00               | LT   | MANHOLE STANDARD NO. MH-3              | P-15     |                        | LT   | 20     |
| D-6      | 100+15.00              | RT   | 12" CONDUIT TYPE B                     | P-16     |                        | RT   | 20     |
| D-7      | 100+66.00              | RT   | 15" CONDUIT TYPE B                     | TOTALS   |                        |      | 349    |
| D-8      | 100+66.00              | LT   | 6" CONDUIT TYPE F                      |          |                        |      | 226    |
| D-9      | 97+96.00               | RT   | CONCRETE STEPS STANDARD TYPE B         |          |                        |      | 96     |
| D-10     | 99+50.00               | LT   | CONCRETE STEPS STD. TYPE MOD. APP.     |          |                        |      | 949    |
| D-12     | 100+66.00              | RT   | 4" CONCRETE WALK                       |          |                        |      | 162    |
| D-13     | 97+50.00 TO 97+96.00   | LT   | ANCHOR ASSEMBLY TYPE A                 |          |                        |      | 74     |
| D-14     | 97+96.00 TO 99+50.00   | LT   | GUARDRAIL TYPE 5                       |          |                        |      | 62     |
| D-15     | 99+50.00 TO 100+15.00  | LT   | MONUMENT BOX ADJUSTED TO GRADE         |          |                        |      | 112    |
| D-16     | 100+15.00              | LT   | STRUCTURE REMOVED                      |          |                        |      | 539    |
| D-17     | 100+66.00              | RT   | ANCHOR ASSEMBLY REMOVED                |          |                        |      | 34     |
| D-18     | 97+50.00 TO 97+96.00   | LT   | GUARDRAIL REMOVED                      |          |                        |      | 63     |
| D-19     | 97+96.00 TO 99+50.00   | LT   |  |          |                        |      |        |
| D-20     | 99+50.00 TO 100+15.00  | LT   |  |          |                        |      |        |
| D-21     | 100+15.00 TO 100+66.00 | LT   |  |          |                        |      |        |
| TOTALS   |                        |      |  |          |                        |      |        |

PLAN AND PROFILE - STA. 97+50 TO STA. 103+00, S.R. 84