

T.P. #2-- SPIKE IN OBT. POLE #15253
 STA. 77+28, S.R.#84 (B.L.) ELEV.=714.91

LAKE COUNTY
 LAK-84-19.26

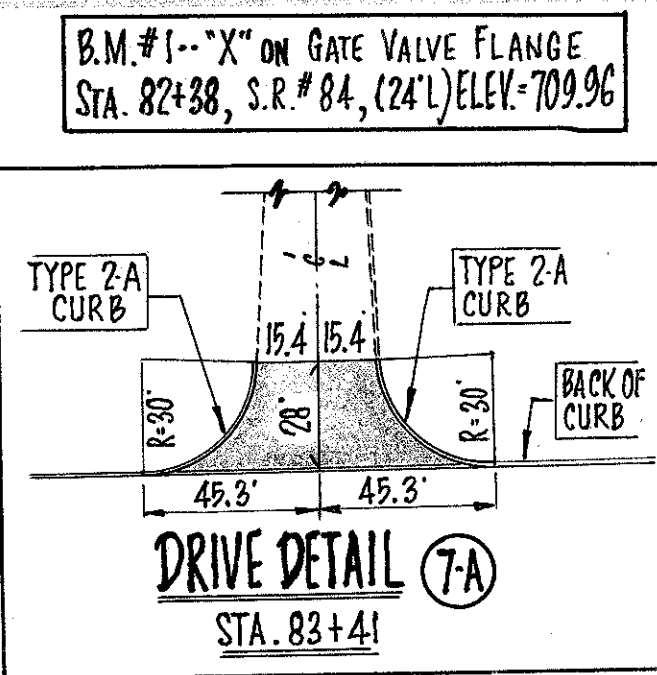
NOTE: FOR EXTRA AREA DETAILS BRYN MAWR DR. AND BELLAIRE DR., SEE SHEET NO. 12.

MONUMENTS			
Ref. No	Station	Loc.	ITEM I-8 MONUMENT ASSEMBLY
I-M	75+72.71	≠	1
Z-M	78+45.69	≠	1
TOTAL			2

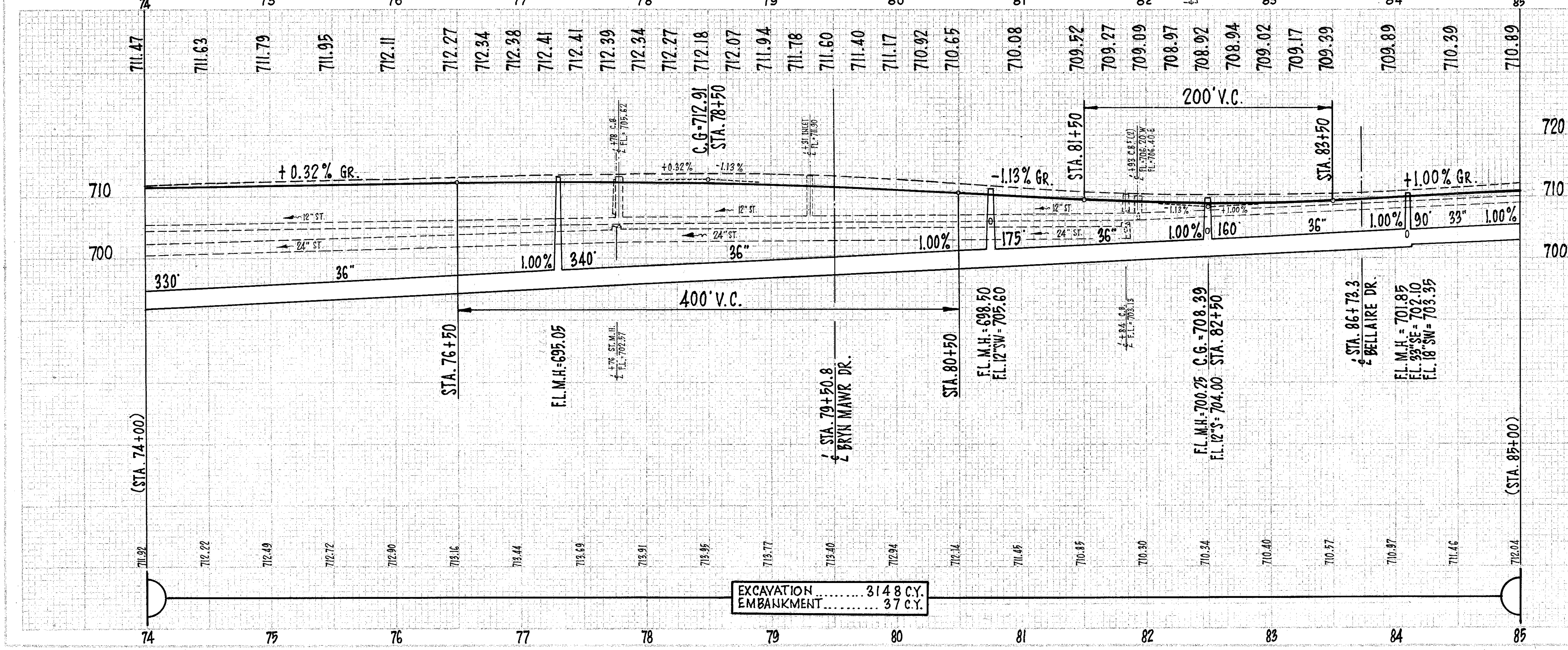
Ref. No	Station	ITEM I-1		ITEM I-8		ITEM I-6
		12" PIPE	18" PIPE	24" PIPE	36" PIPE	
I-S	74+00	80	75	70	65	60
Z-S	80+75	8	26			
Z-S	82+50	8	26			
Z-S	84+10	68	26			
TOTAL		84	78	8	26	60

Ref. No	Station	ITEM B-70		ITEM T-30	
		12" PIPE	18" PIPE	3" PORTLAND CEMENT CONCRETE SURFACE COURSE	5" PORTLAND CEMENT ASPHALTIC BITUMINOUS TACK COAT @ 0.10 GAL. PER SQ. YD.
I-P	83+62	83+83	14	* 1.0	2
TOTAL		14	* 1.0	2	

Ref. No	Station	ITEM I-1		TOTAL
		6" PIPE Class I-3	6" PIPE Class F-4	
I-F	74+00	1056	40	80
Z-F	74+00	866	30	80
Z-F	83+83	108	20	
TOTAL		2030	90	80

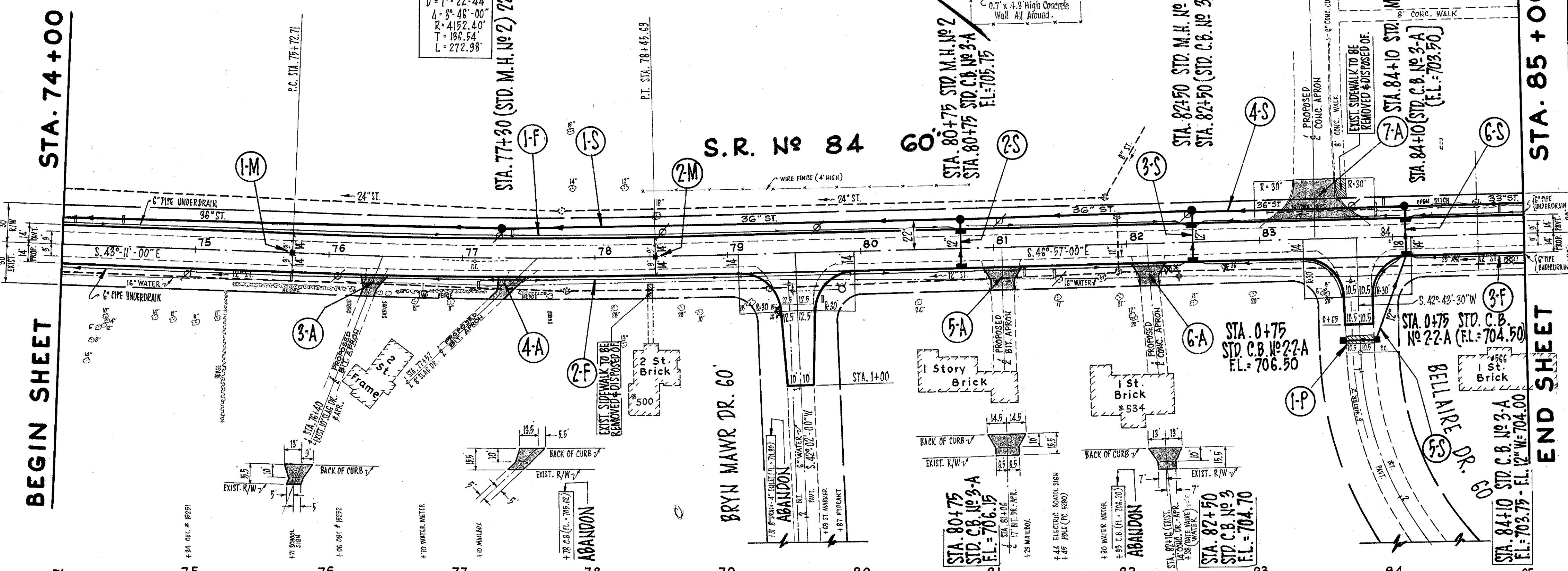


PLAN & PROFILE -- S.R. #84 -- STA. 74+00 to STA. 85+00



EXCAVATION..... 314.8 C.Y.
 EMBANKMENT..... 37 C.Y.

* TO BE LAID IN (2) - 1/4" COURSES.



S.R. #84
 CURVE DATA
 Δ = 1° 22' 44"
 R = 4152.40'
 T = 195.54'
 L = 272.98'

BEGIN SHEET
 STA. 74+00

END SHEET
 STA. 85+00