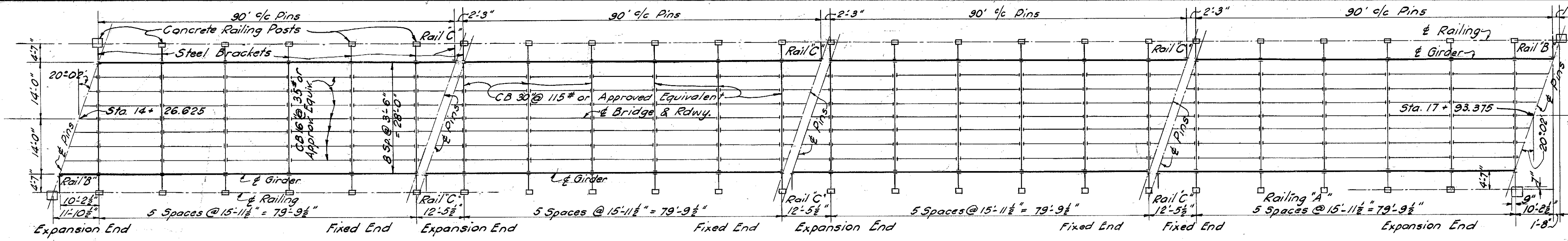
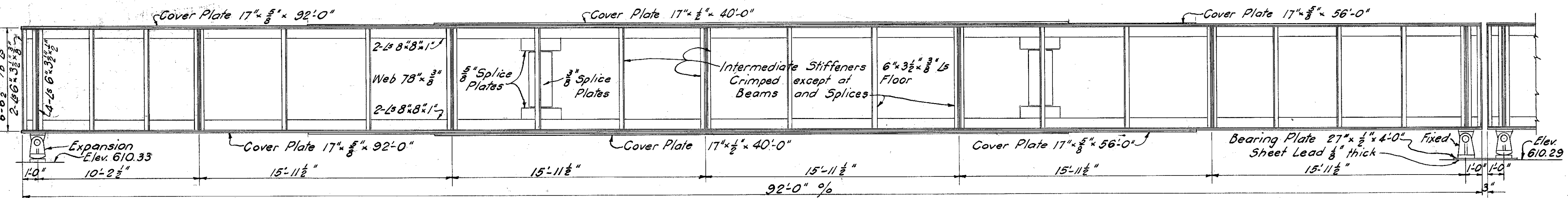


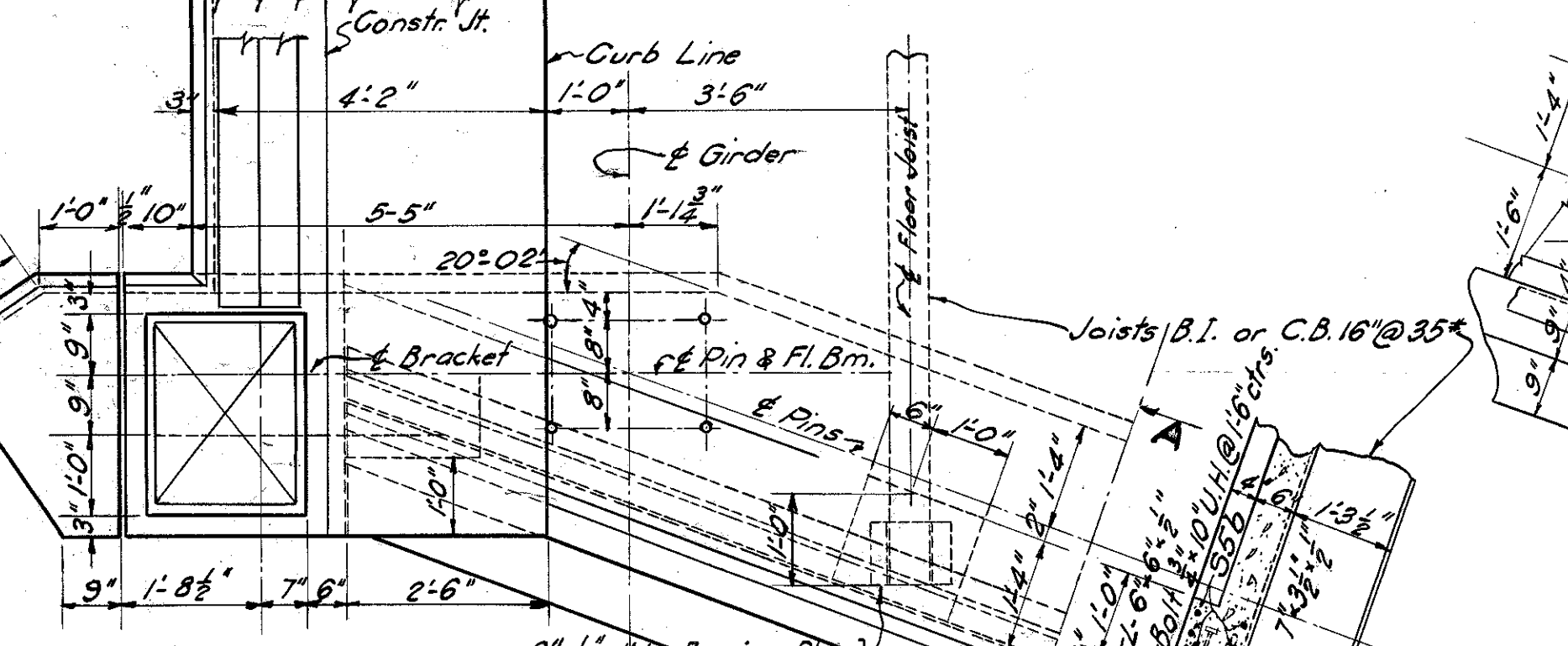
LAKE COUNTY S.H. 563 SEC. PAINESVILLE BR.



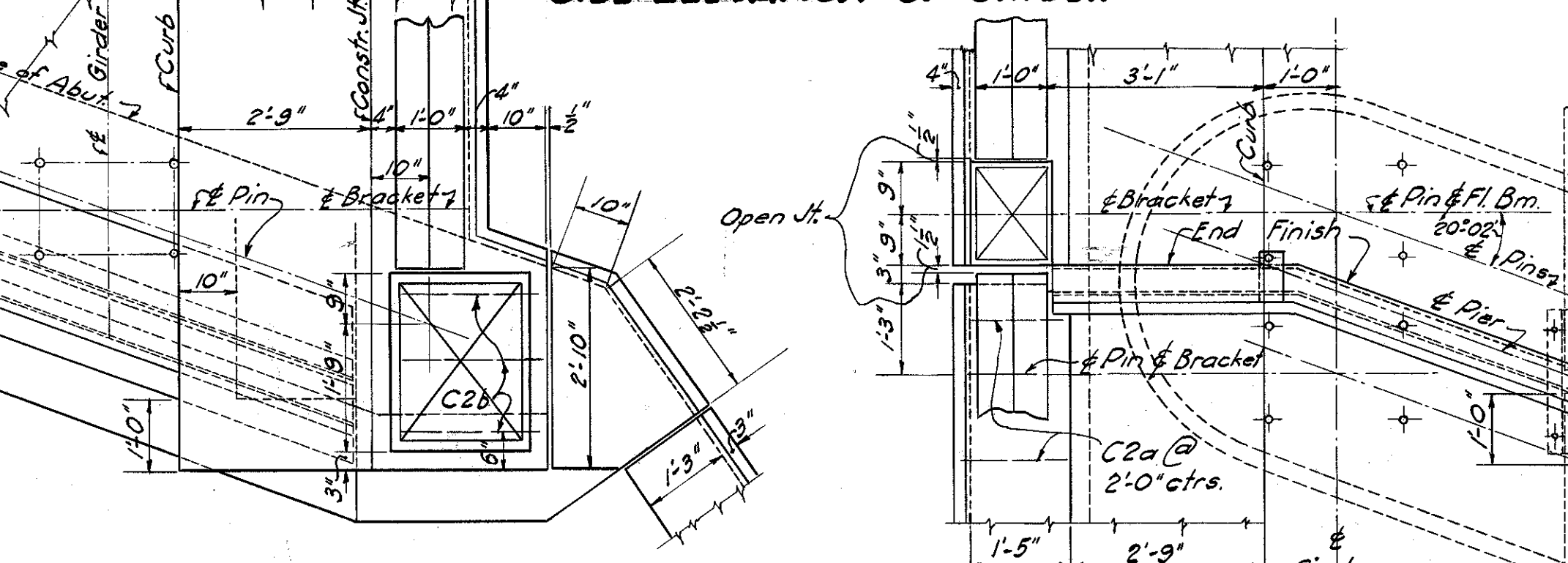
STRUCTURAL PLAN OF SUPERSTRUCTURE



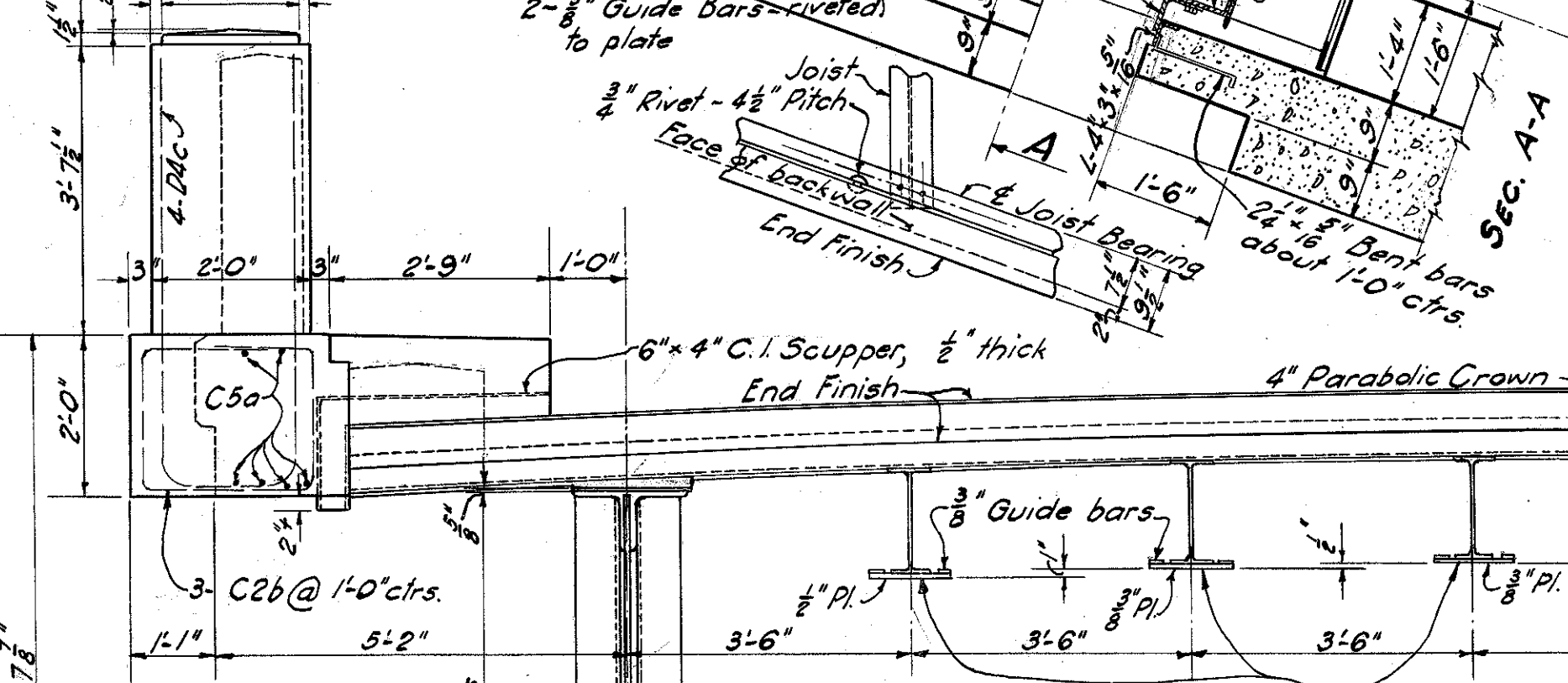
SIDE ELEVATION OF GIRDER



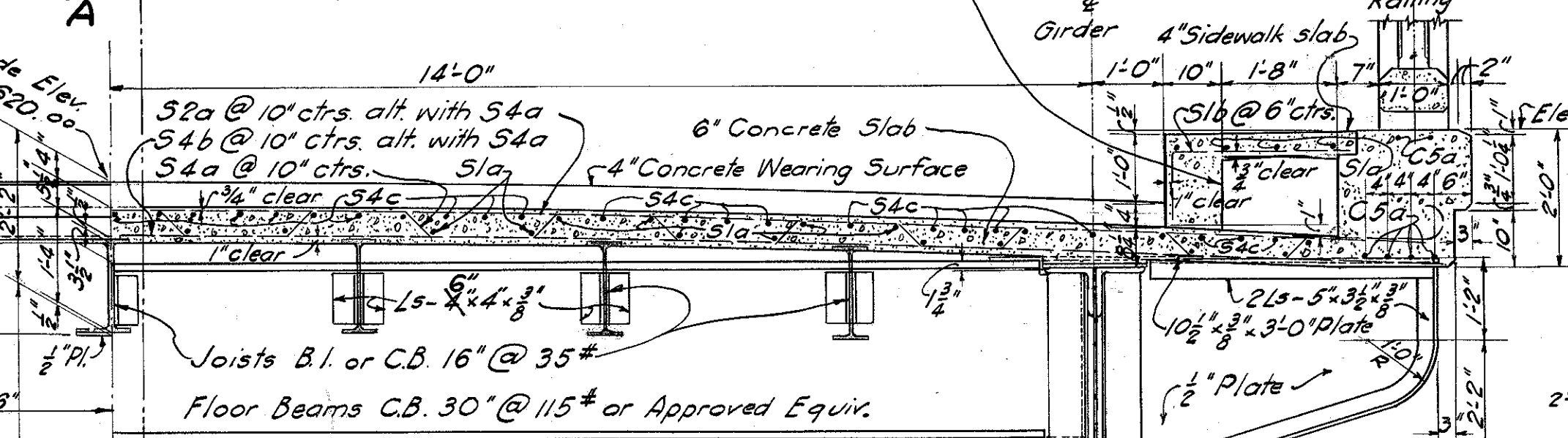
SUPERSTRUCTURE DETAILS AT ABUTMENTS



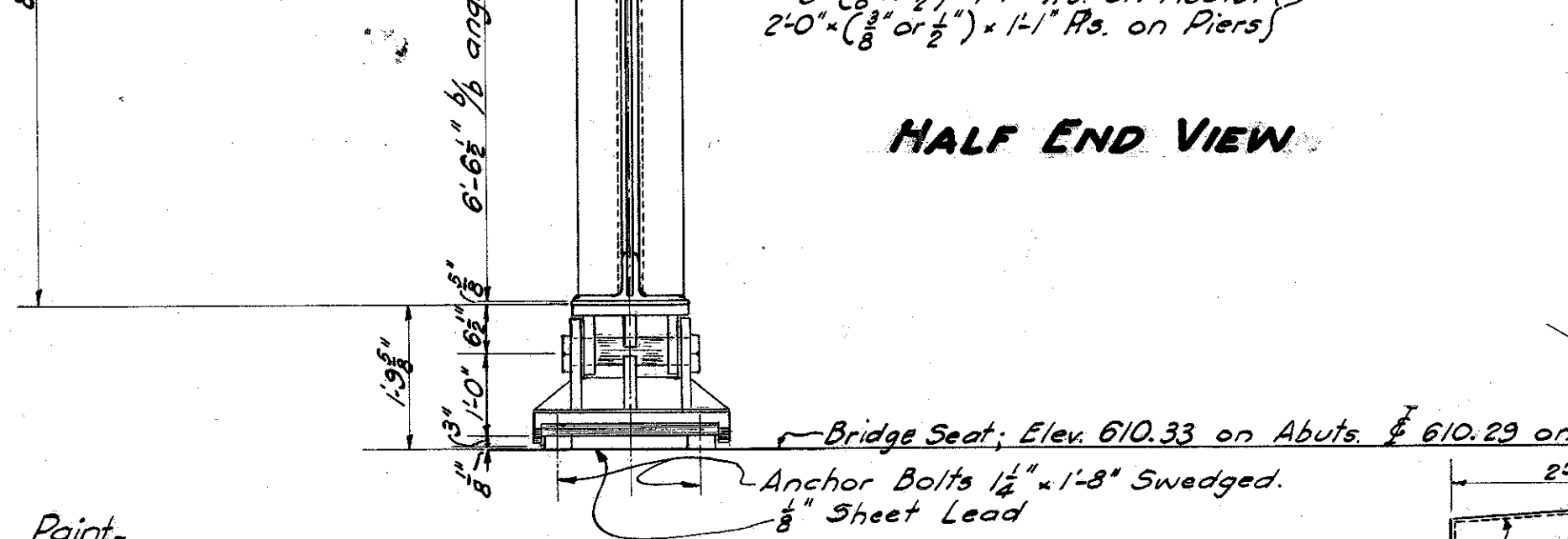
SUPERSTRUCTURE DETAILS AT PIERS



HALF END VIEW

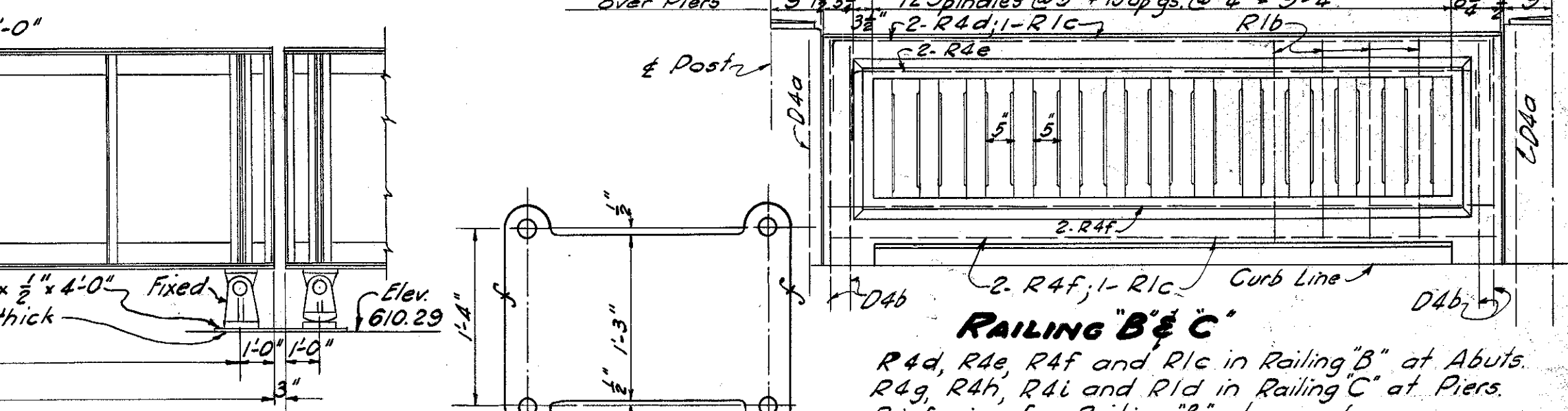


HALF INTERMEDIATE SECTION

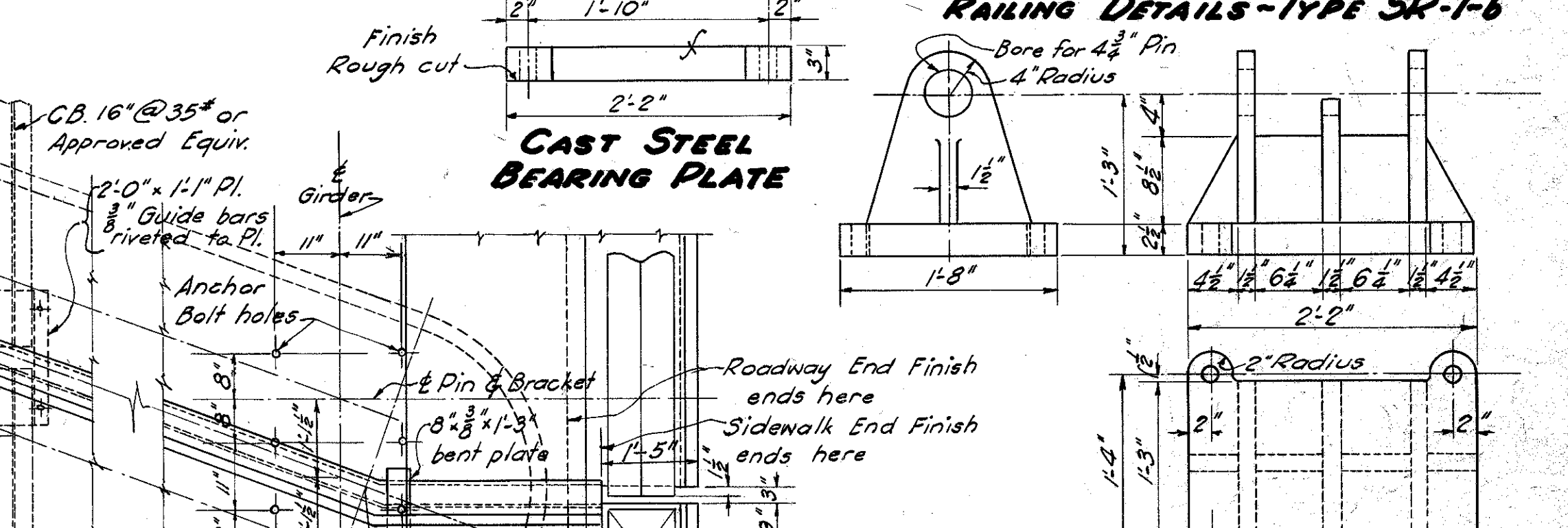


CAST IRON SCUPPER DETAIL 16 Required

Paint - The structural steel shall be painted with one shop coat of red lead or sblimed blue lead according to the Construction and Material Specifications, and two field coats of aluminum paint according to special typewritten specifications furnished by the Bureau of Bridges.

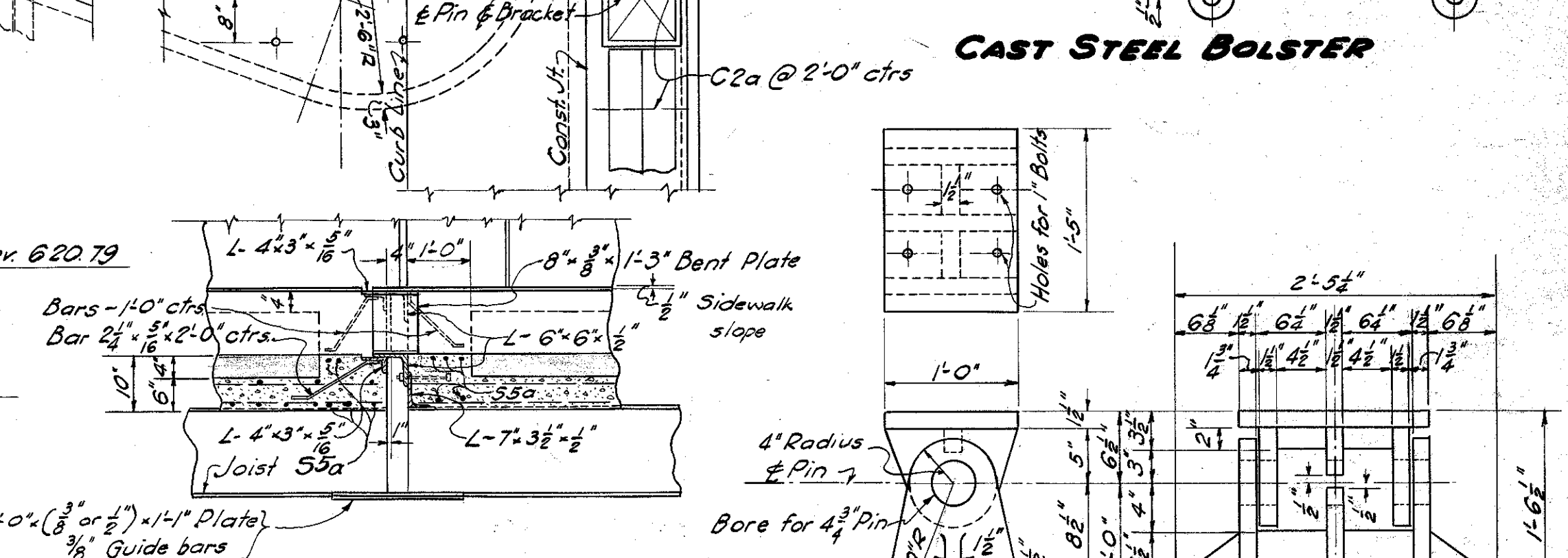


RAILING B & C RAILING DETAILS - TYPE SR-1-b

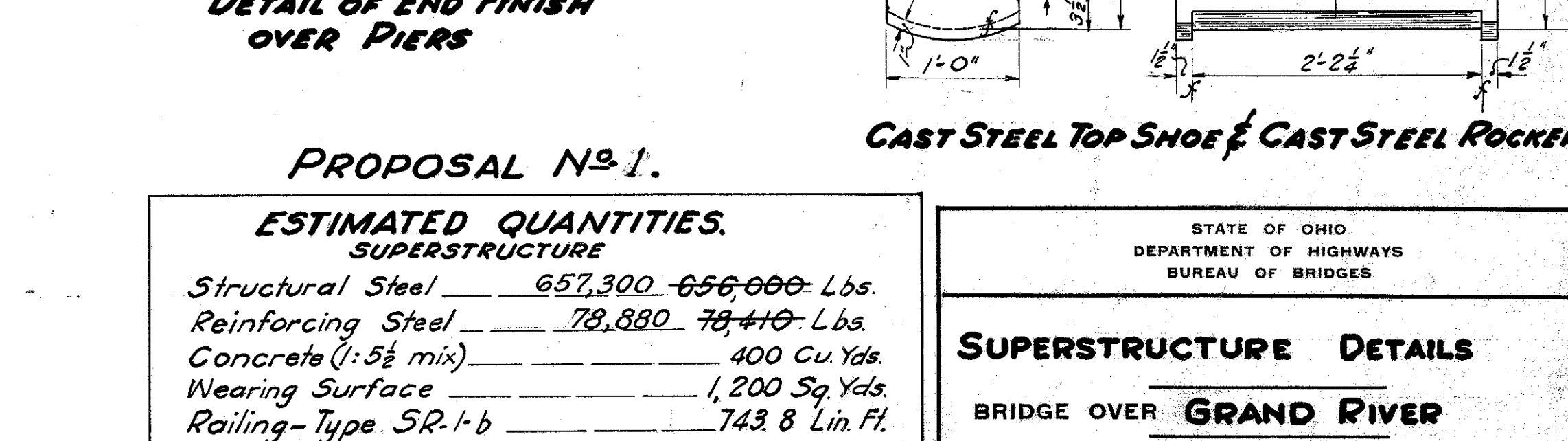


CAST STEEL BEARING PLATE

CAST STEEL BOLSTER



DETAIL OF END FINISH OVER PIERS



CAST STEEL TOP SHOE & CAST STEEL ROCKER

PROPOSAL No. 1.

ESTIMATED QUANTITIES. SUPERSTRUCTURE	
Structural Steel	657,300 - 656,000 Lbs.
Reinforcing Steel	78,880 - 78,410 Lbs.
Concrete (1:5 1/2 mix)	400 Cu. Yds.
Wearing Surface	1,200 Sq. Yds.
Railing - Type SR-1-b	743.8 Lin. Ft.

STATE OF OHIO DEPARTMENT OF HIGHWAYS BUREAU OF BRIDGES						
SUPERSTRUCTURE DETAILS						
BRIDGE OVER GRAND RIVER						
S.H. 563			LAKE COUNTY SECTION PAINESVILLE BR. STA. 16+10			
DESIGNED	DRAWN	TRACED	CHECKED	REVIEWED	DATE	REVISED
W.C.B.	W.C.B.	C.C.T.	W.C.B.	W.C.B.	10/23/30	

Revised Feb. 7, 1931 Number, Spacing and Location of 33a and 35b bars revised. Conn. Lt on Joists changed to 6" x 4" 3/8" Ls adding 1300# for steel.