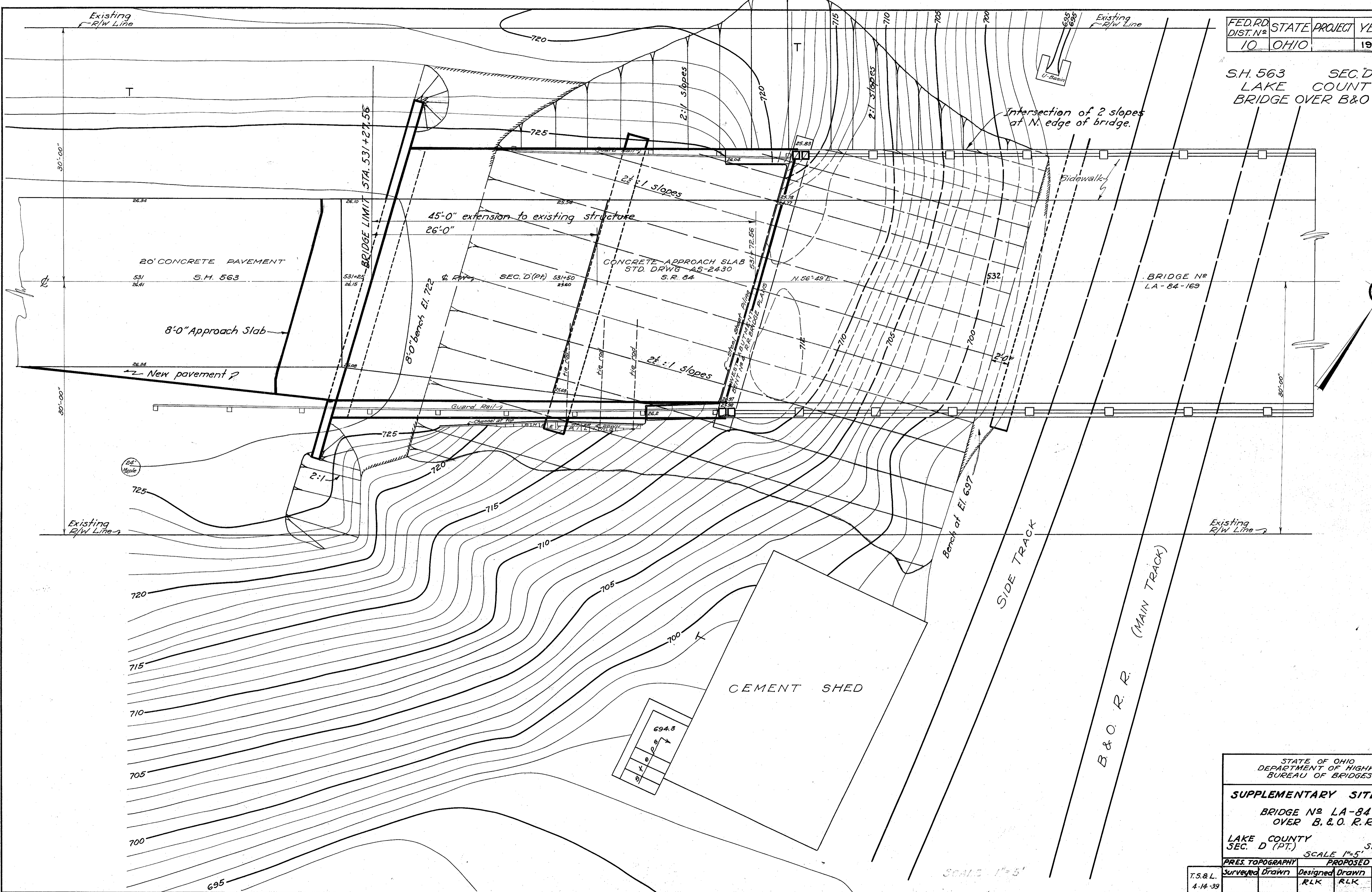


S.H. 563 SEC. D (PT.)
LAKE COUNTY
BRIDGE OVER B & O R.R.



STATE OF OHIO
DEPARTMENT OF HIGHWAYS
BUREAU OF BRIDGES

SUPPLEMENTARY SITE PLAN

BRIDGE N^o LA-84-169
OVER B. & O. R.R.

LAKE COUNTY S.H. 563
SEC. D (PT.) STA. 531+72.56

SCALE 1"=5'

T.S. & L.	PRES. TOPOGRAPHY		PROPOSED WORK		
	Surveyed	Drawn	Designed	Drawn	Checked
4-14-39			RLK	RLK	JCM