

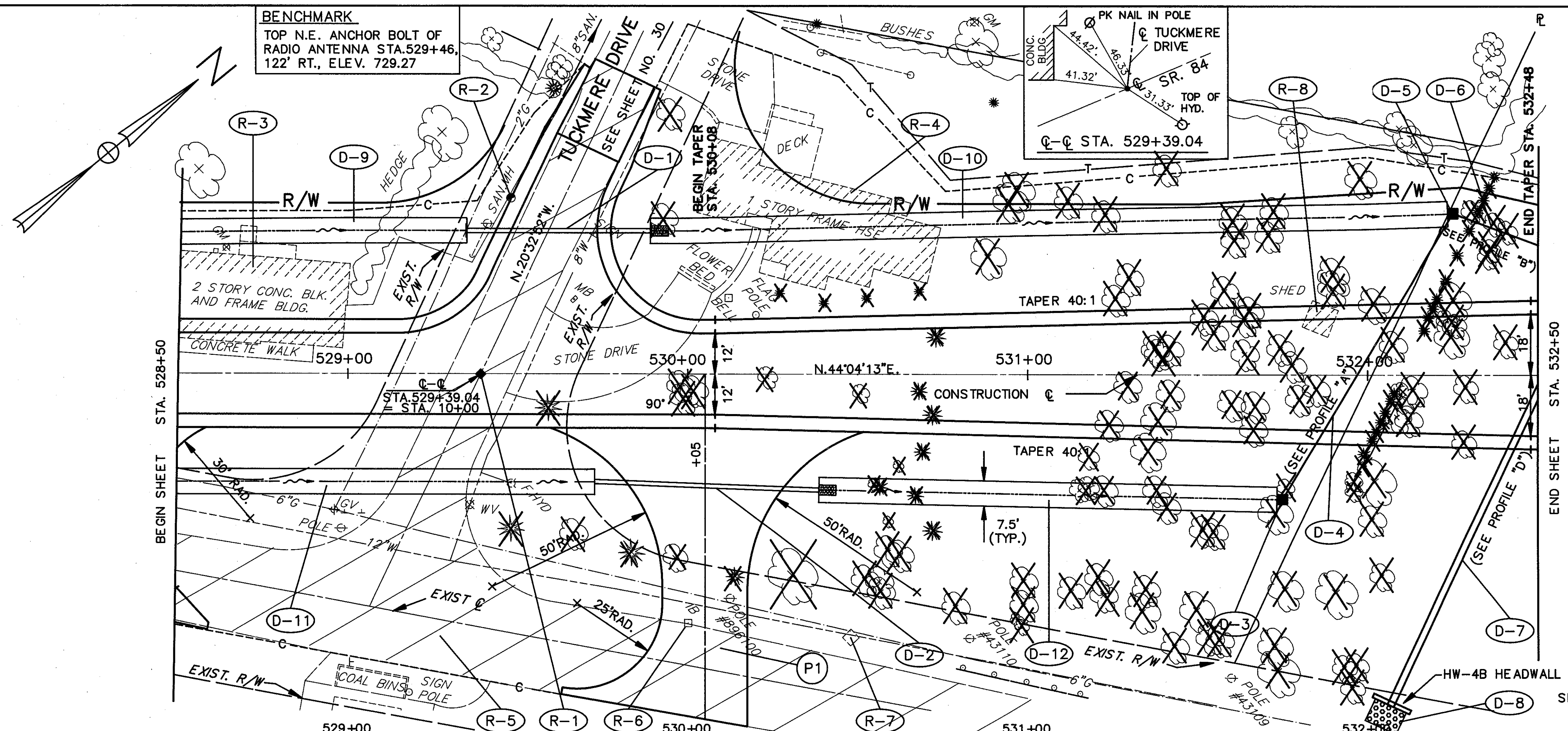
**BENCHMARK**  
TOP N.E. ANCHOR BOLT OF  
RADIO ANTENNA STA. 529+46,  
122' RT., ELEV. 729.27

CALC. BY CCH  
DATE 4/5/90  
CHKD. BY RBG  
DATE 5/12/90

LAK 84 - 17.20

OHIO  
FHWA 5  
REGION

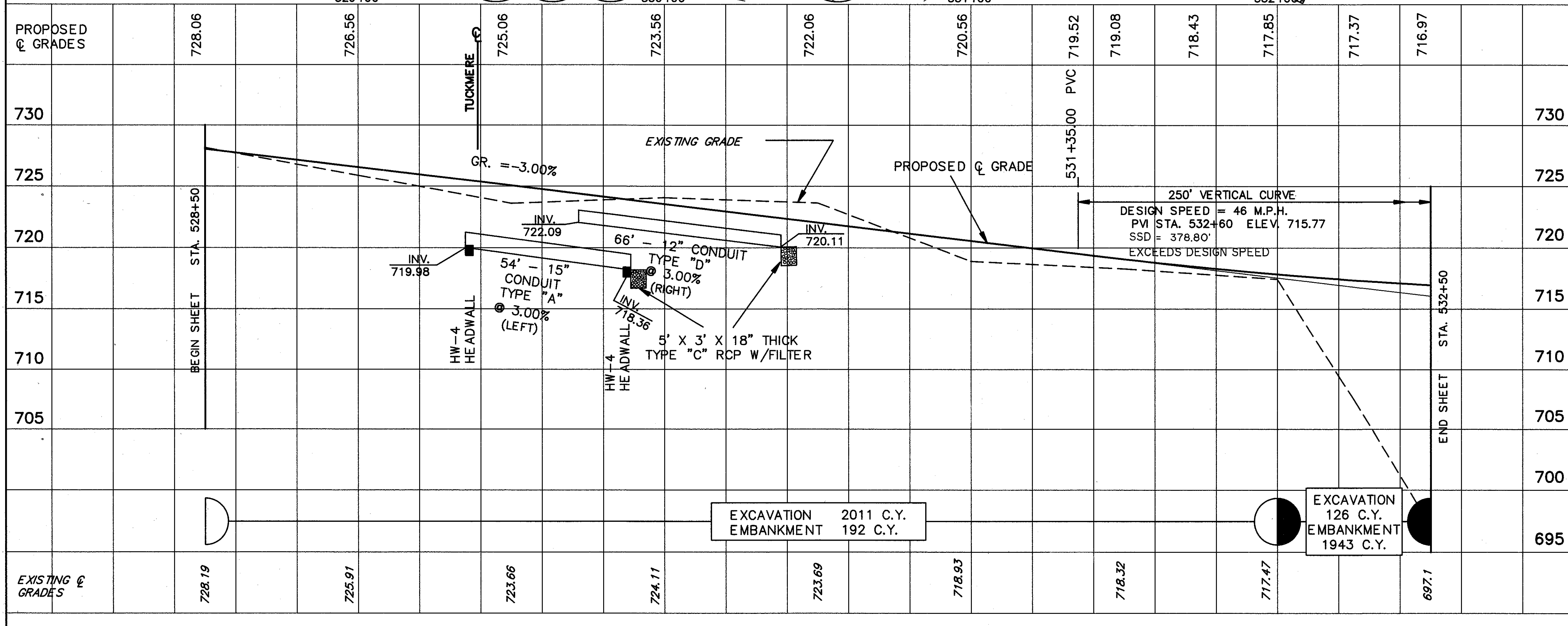
17  
53



**REFERENCE DRAWINGS**      **SHT NO.**  
FOR PAVEMENT CROSS-SECTIONS      23-26  
FOR TRAFFIC CONTROL PLANS      43-45  
FOR DRIVEWAY PROFILES      40-41  
FOR RIGHT-OF-WAY PLANS      46-53  
FOR STORM SEWER PROFILES      35  
FOR DRIVEWAY DETAILS      39  
FOR INTERSECTION GRADING      30

STIP	DESCRIPTION	EA.	EA.	EA.	EA.	EA.	EA.	EA.	EA.	EA.
202	FRAME SHED (PAR. 5) DEMOLISHED									
604	SANITARY MANHOLE ADJUSTED TO GRADE									
604	MONUMENT BOX ASSEMBLY, STANDARD									
202	STRUCTURE REMOVED 3' x 3' CONC. BASE									
202	INLET BASIN REMOVED									
202	2 STORY BRICK (PAR. 4) BLDG. DEMOLISHED									
202	1 STORY FRAME (PAR. 5) HSE. DEMOLISHED									
202	PAVEMENT REMOVED									
										<b>TOTALS</b>

REF.	LOCATION	EA.	EA.	EA.	EA.	EA.	EA.	EA.	EA.	EA.
R-1	STA. 529+39.04									
R-2	STA. 529+48, 51.51, L.I.									
R-3	STA. 528+75, L.I.									
R-4	STA. 530+50, L.I.									
R-5	STA. 528+50 TO 530+00									
R-6	STA. 530+00, 74 RT.									
R-7	STA. 530+48, 77 RT.									
R-8	STA. 531+86, 161 T.									
										<b>TOTALS</b>



STIP	DESCRIPTION	EA.	EA.	EA.	EA.	EA.	EA.	EA.	EA.	EA.
603	12" CONDUIT TYPE "B"									
670	DITCH EROSION PROTECTION									
601	ROCK CHANNEL PROTECTION TYPE "C" W/FILTER									
602	CONCRETE MASONRY									
603	30" CONDUIT TYPE "A" 2000 D-LOAD									
603	15" CONDUIT TYPE "C"									
604	CATCH BASIN NO.5, W/O APRON W/"B" GRATE									
603	15" CONDUIT TYPE "A"									
603	12" CONDUIT TYPE "D"									
										<b>TOTALS</b>

REF.	LOCATION	EA.	EA.	EA.	EA.	EA.	EA.	EA.	EA.	EA.
D-1	STA. 529+35 TO 529+89, 47 L.T.									
D-2	STA. 529+72, 33 RT. TO 530+38, 34 RT.									
D-3	STA. 531+75, 37 RT.									
D-4	STA. 531+75, 37 RT. TO 532+25, 47.4 L.T.									
D-5	STA. 532+25, 47.4 L.T.									
D-6	STA. 532+25, 47.4 L.T. TO 532+50, 38 L.T.									
D-7	STA. 532+07, 100 RT.									
D-8	STA. 528+50 TO 529+35, L.I.									
D-9	STA. 529+50 TO 532+25, L.I.									
D-10	STA. 529+90 TO 532+25, L.I.									
D-11	STA. 528+50 TO 529+73, RT.									
D-12	STA. 530+38 TO 531+75, RT.									
										<b>TOTALS</b>