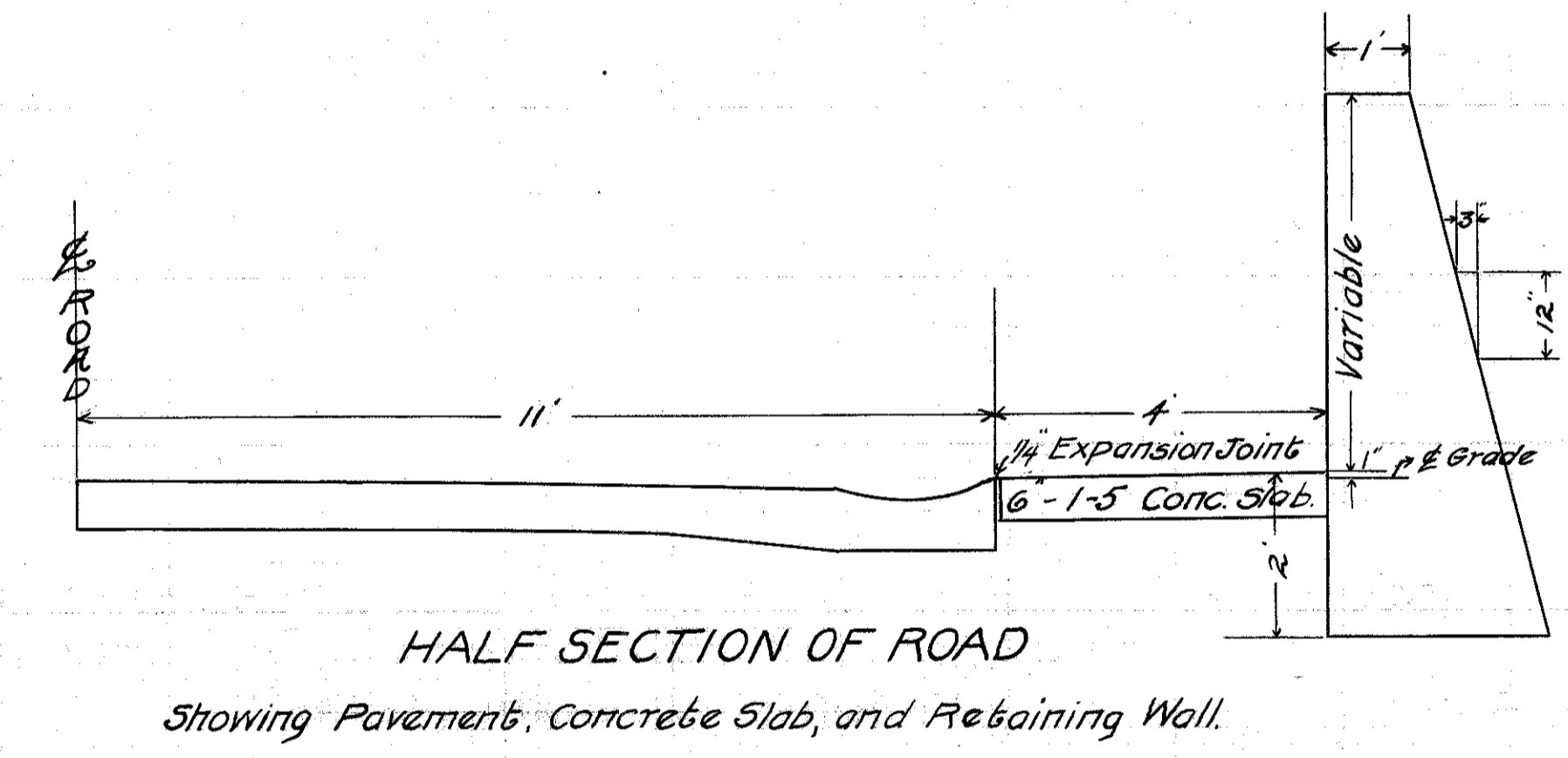
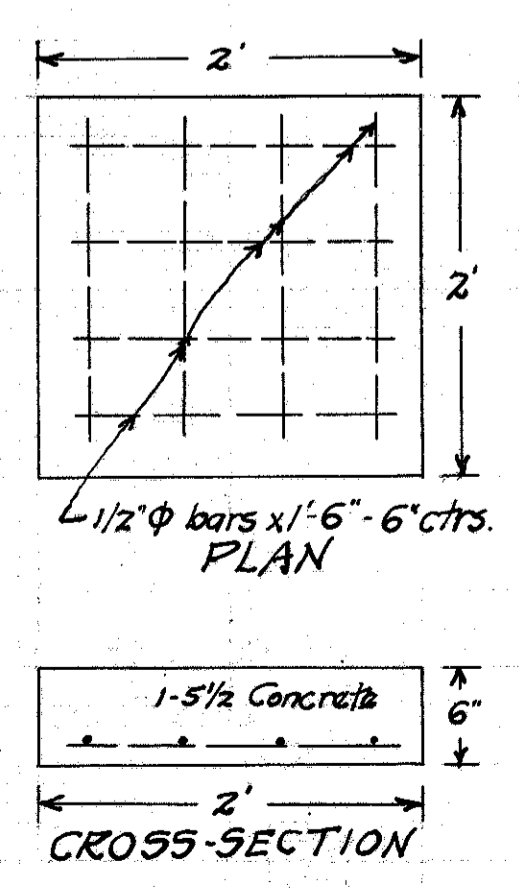


123.4 cu yds. excavation
70.3 cu yds. 1-6 1/2 Concrete
15.2 cu yds. 1-5 Concrete



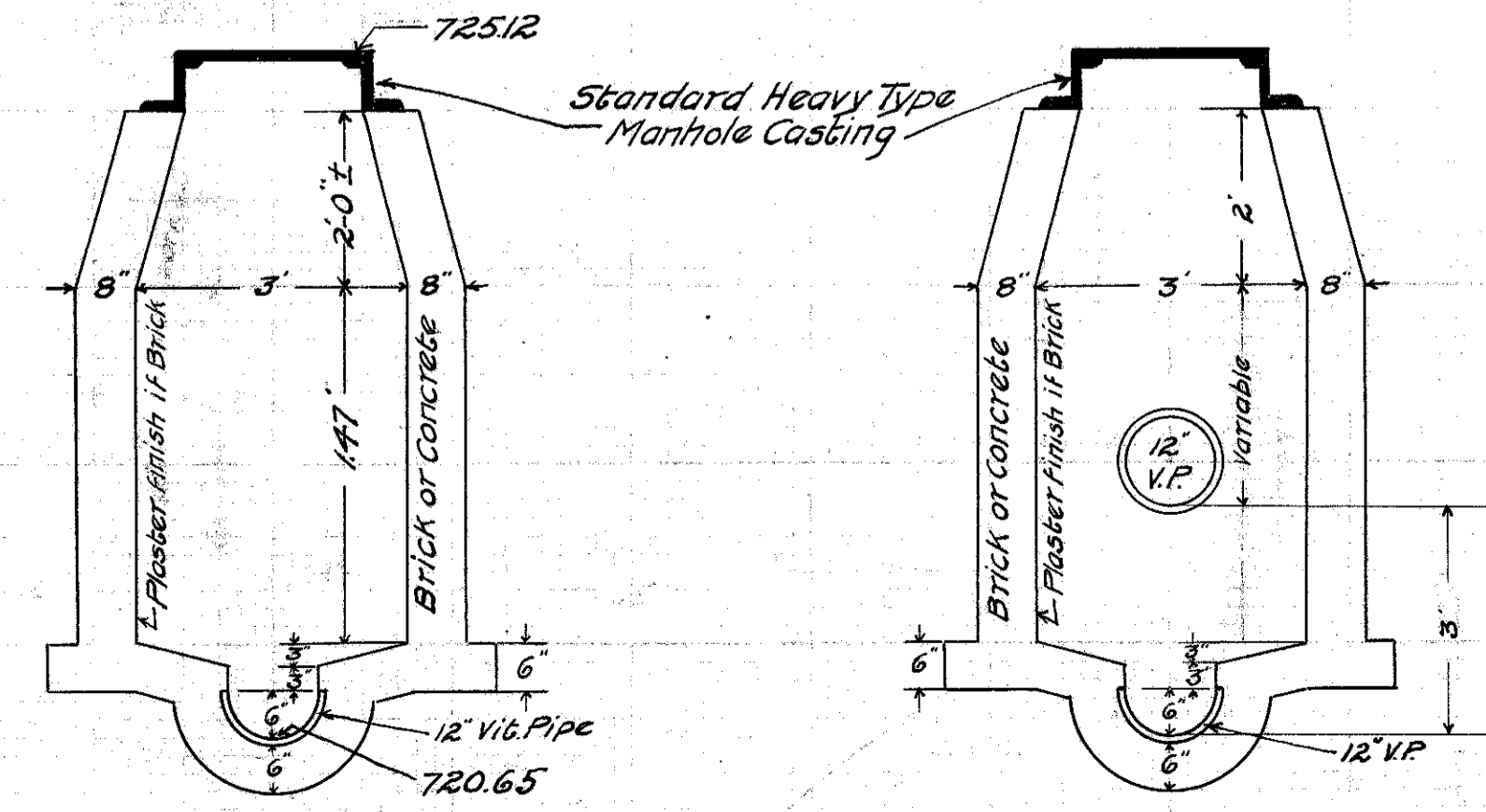
RETAINING WALL STA. 69+20 - 71+50 15' TO R. ϕ

PRECAST CAPS FOR 1. Basins

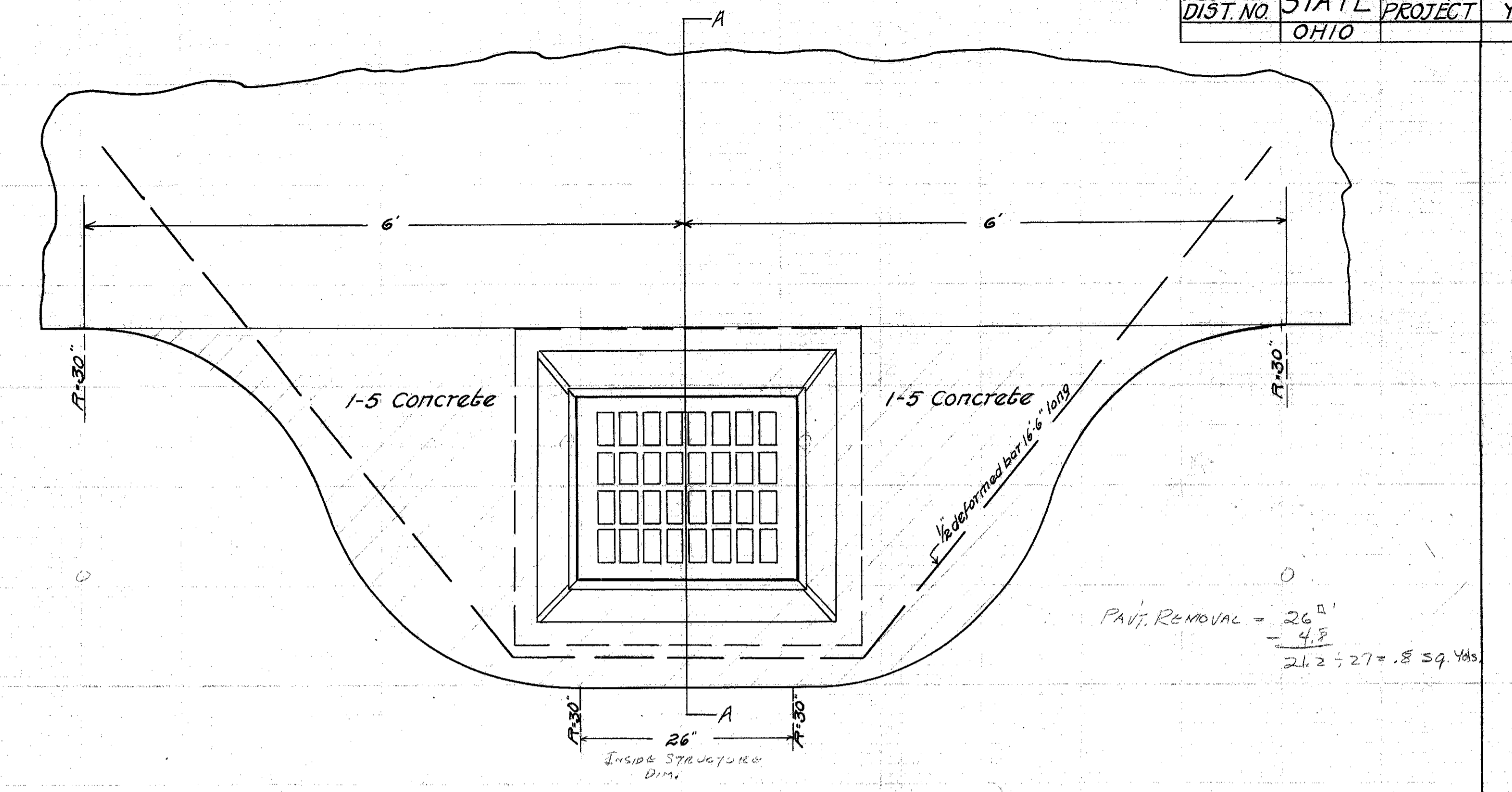
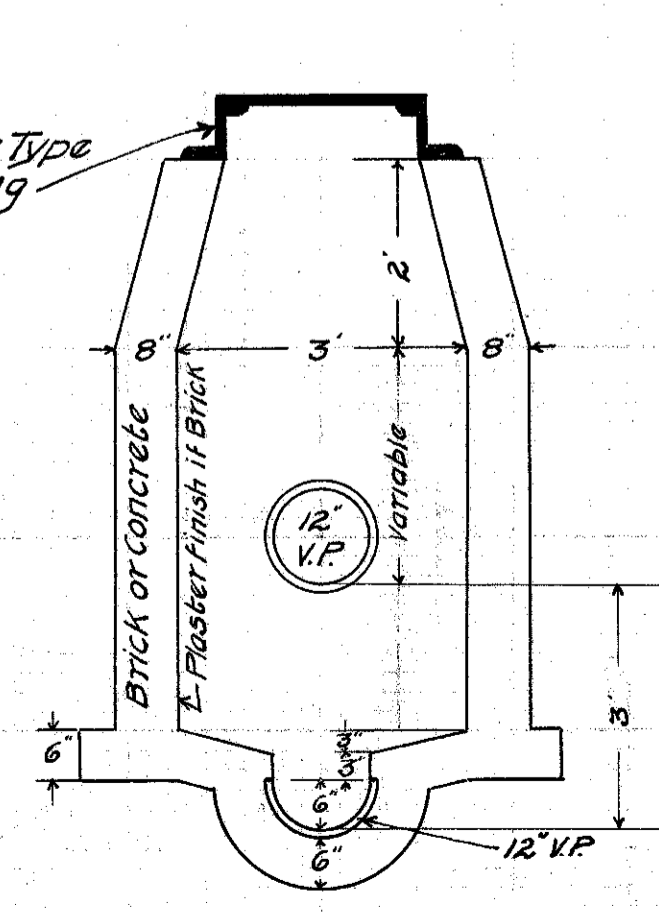


.074 cu yds. 1-5/2 concrete
8 lbs. Reinf. Steel.

SECTION THRU STANDARD MANHOLE STA 221+0 13' R.



SECTION THRU STANDARD DROP MANHOLE



PAV. REMOVAL = $\frac{26 \times 4.8}{21.2 \div 27} = .8$ Sq. Yds.

Note: 1-5 Concrete around basins more than 11' from ϕ to be considered as part of basins. Scale 1" = 1'-0"

