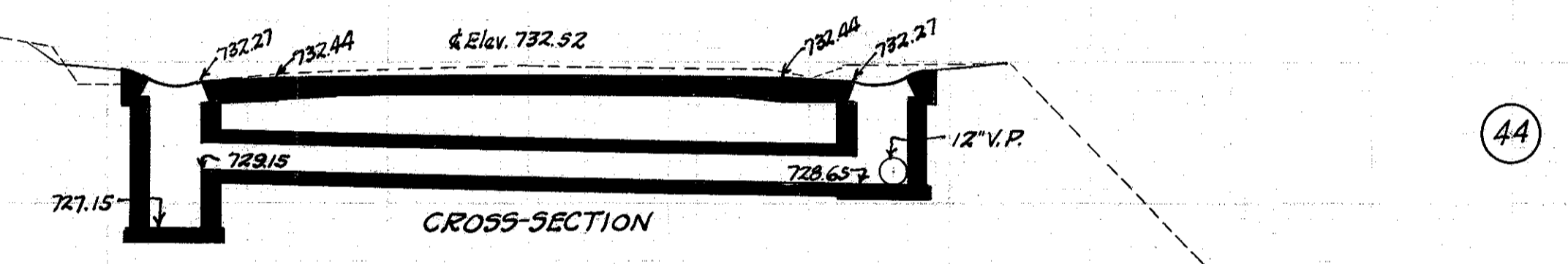
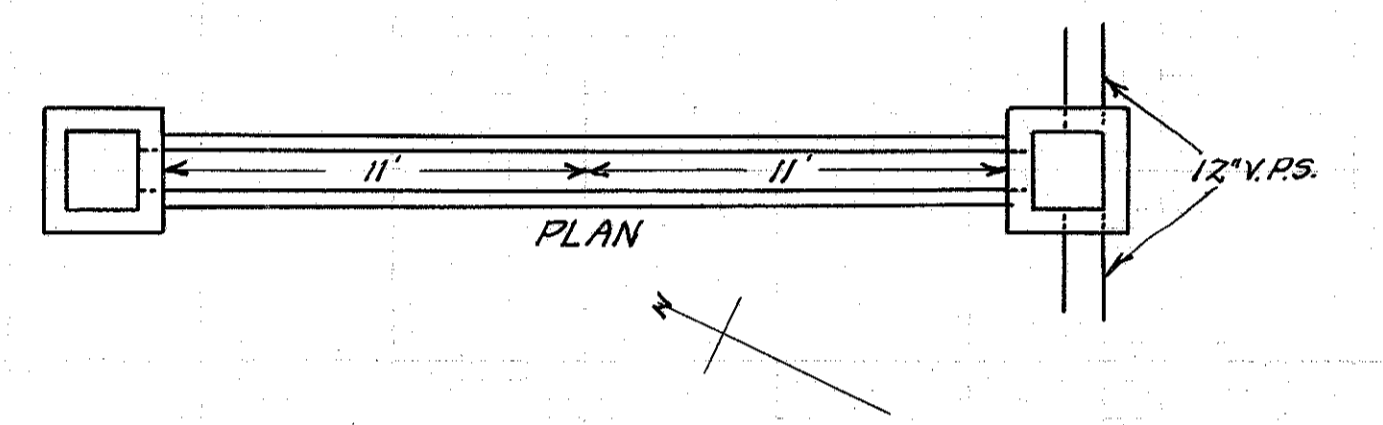


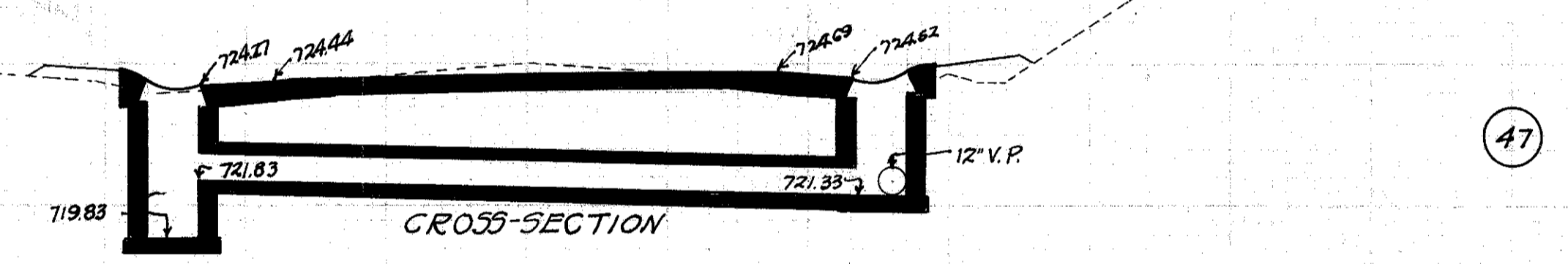
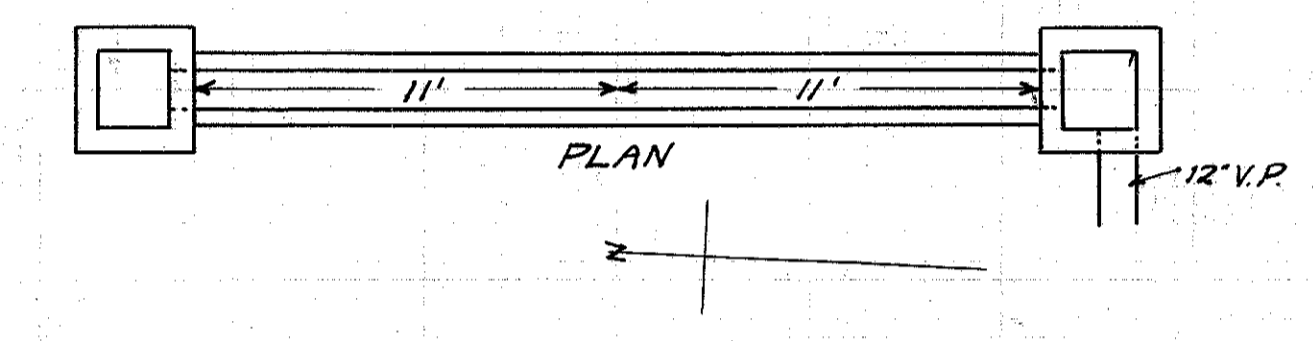
CULVERT DATA
 Type: Std. V.S.P. culvert Dr. #300
 Size: 12" x 24"
 Work Req: Build 12" x 24' Std. V.P. (enc) culvert
 C.B. on L I.B. on R.
 Drawn by Cumings & Plummer Checked by
 Date, 4/2/28 Date, Div'n. Engr.

EST. QUANTITIES
 Exc. 8.5 Cu. Yds.
 Conc. 1-8 2.38 Cu. Yds.
 12" V.P. 24 Lin. Ft.
 C.B. 1
 I.B. 1
 Sta. 215+50



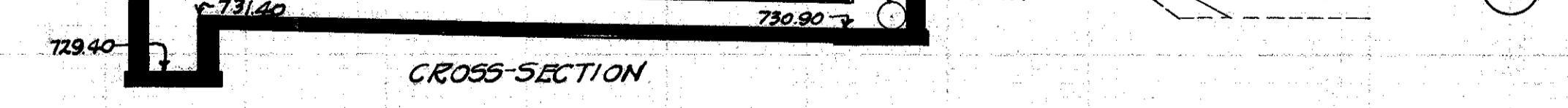
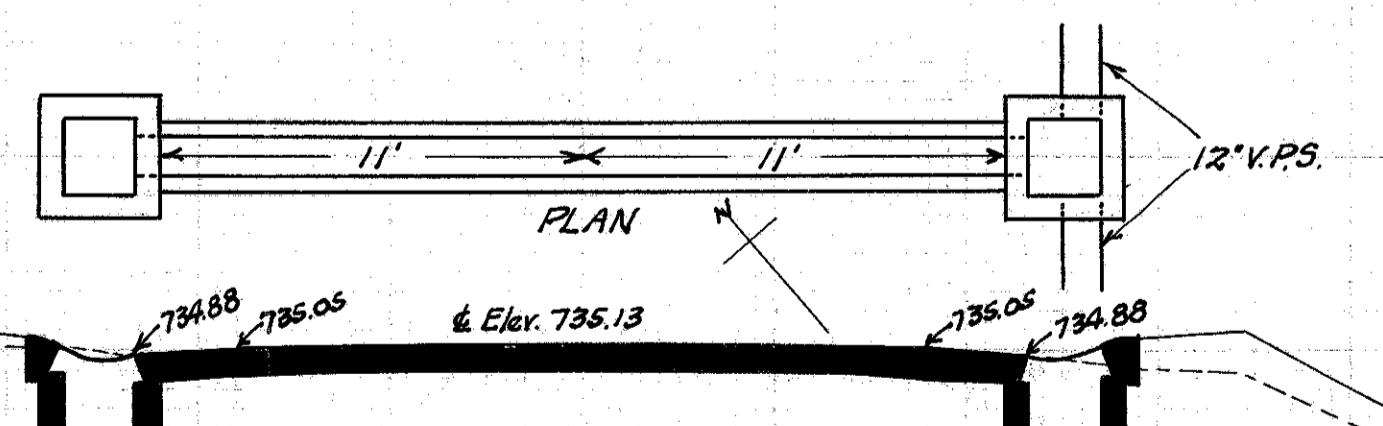
CULVERT DATA
 Type: Std. V.S.P. culvert Dr. #300
 Size: 12" x 24"
 Work Req: Build 12" x 24' Std. V.P. (enc) culvert
 C.B. on L I.B. on R.
 Drawn by Cumings & Plummer Checked by
 Date, 4/2/28 Date, Div'n. Engr.

EST. QUANTITIES
 Exc. 69 Cu. Yds.
 Conc. 1-8 2.38 Cu. Yds.
 12" V.P. 24 Lin. Ft.
 C.B. 1
 I.B. 1
 Sta. 203+50



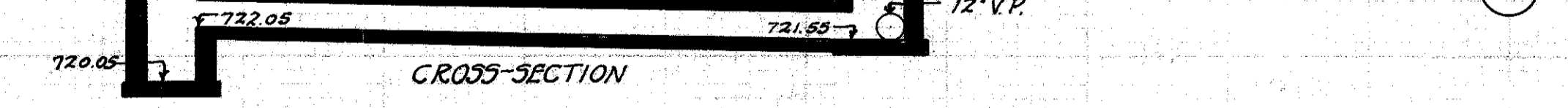
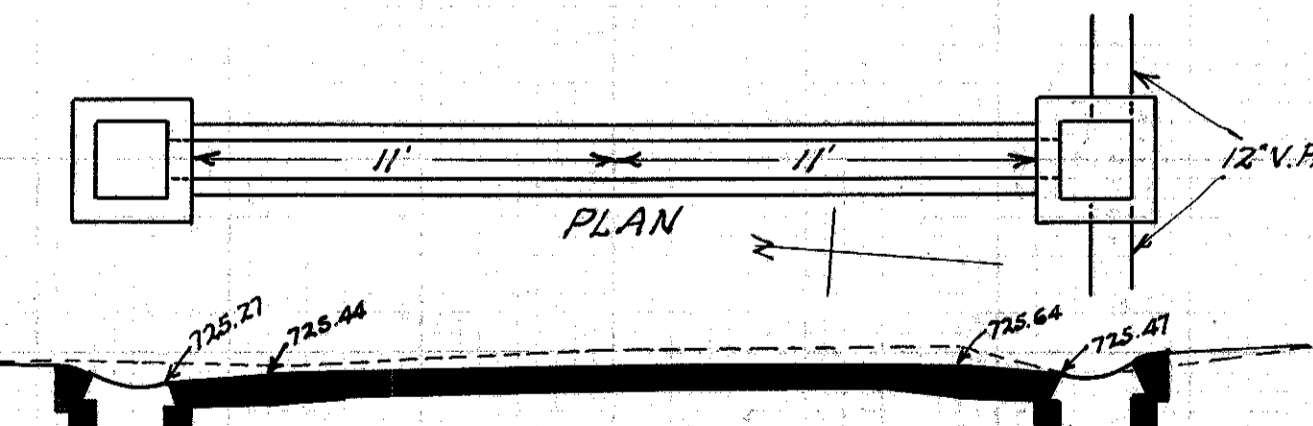
CULVERT DATA
 Type: Std. V.S.P. culvert Dr. #300
 Size: 12" x 24"
 Work Req: Build 12" x 24' Std. V.P. (enc) culvert.
 C.B. on L I.B. on R.
 Drawn by Cumings & Plummer Checked by
 Date, 4/2/28 Date, Div'n. Engr.

EST. QUANTITIES
 Exc. 7.2 Cu. Yds.
 Conc. 1-8 2.38 Cu. Yds.
 12" V.P. 24 Lin. Ft.
 C.B. 1
 I.B. 1
 Sta. 223+25



CULVERT DATA
 Type: Std. V.S.P. culvert Dr. #300
 Size: 12" x 24"
 Work Req: Build 12" x 24' Std. V.P. (enc) culvert
 C.B. on L I.B. on R.
 Drawn by Cumings & Plummer Checked by
 Date, 4/2/28 Date, Div'n. Engr.

EST. QUANTITIES
 Exc. 7.0 Cu. Yds.
 Conc. 1-8 2.38 Cu. Yds.
 12" V.P. 24 Lin. Ft.
 C.B. 1
 I.B. 1
 Sta. 199+0



CULVERT DATA
 Type: Std. V.S.P. culvert Dr. #300
 Size: 12" x 24"
 Work Req: Build 12" x 24' Std. V.P. (enc) culvert
 C.B. on L I.B. on R.
 Drawn by Cumings & Plummer Checked by
 Date, 4/2/28 Date, Div'n. Engr.

EST. QUANTITIES
 Exc. 7.5 Cu. Yds.
 Conc. 1-8 2.38 Cu. Yds.
 12" V.P. 24 Lin. Ft.
 C.B. 1
 I.B. 1
 Sta. 219+50