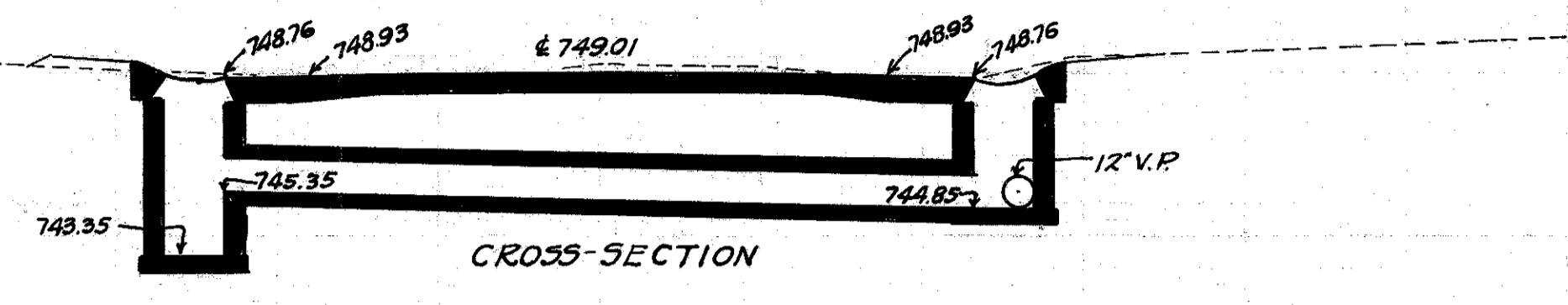
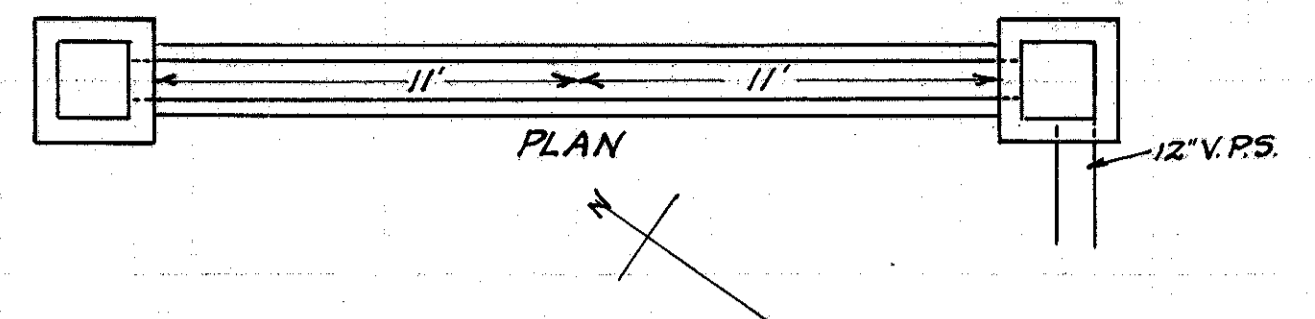


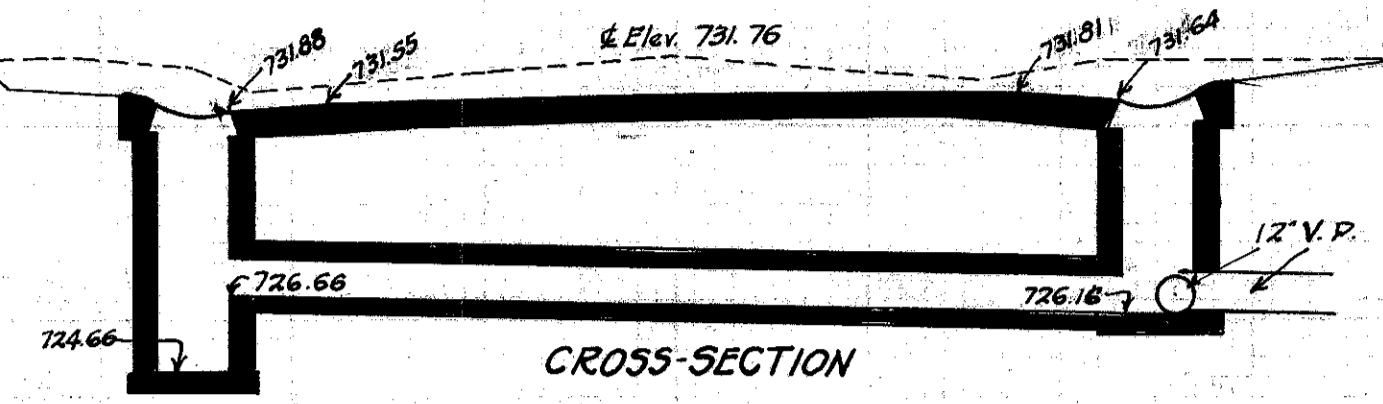
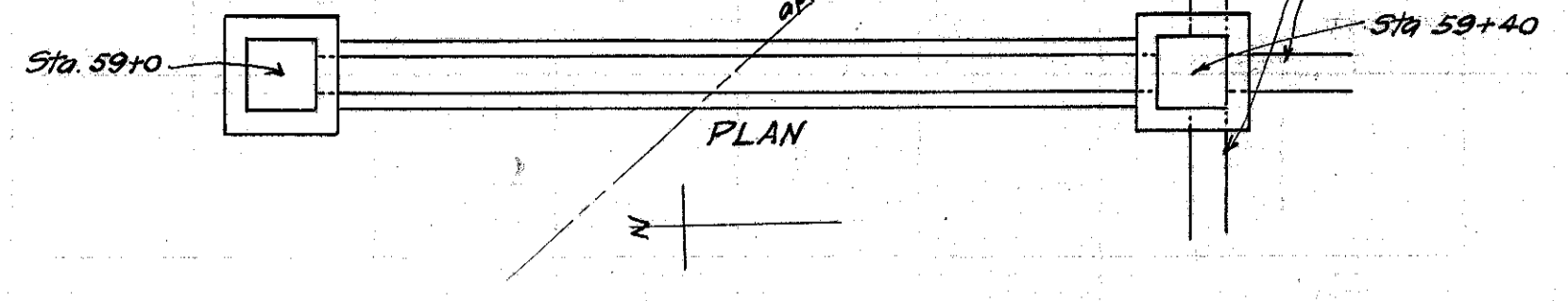
30 25 20 15 10 5 ± 5 10 15 20 25 30



CULVERT DATA
 Type: Std. V.S.P. culvert Dr. #300
 Size: 12" x 24'
 Work Req. Build 12" x 24' Std. V.P. (enc.) culvert.
 I.B. on R. C.B. on L.
 Drawn by Cumings & Plummer Checked by
 Date 3/31/26 Date

EST. QUANTITIES
 Exc. 7.1 Cu. Yds.
 Conc. 1-8 2.38 Cu. Yds.
 12" V.P. 24 Lin. Ft.
 C.B. 1
 I.B. 1
 Div'n. Engr. Sta. 43+0

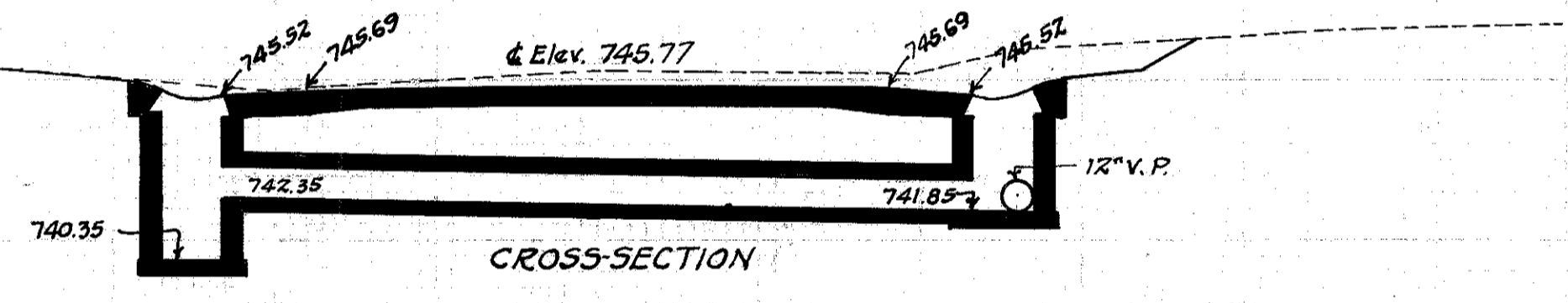
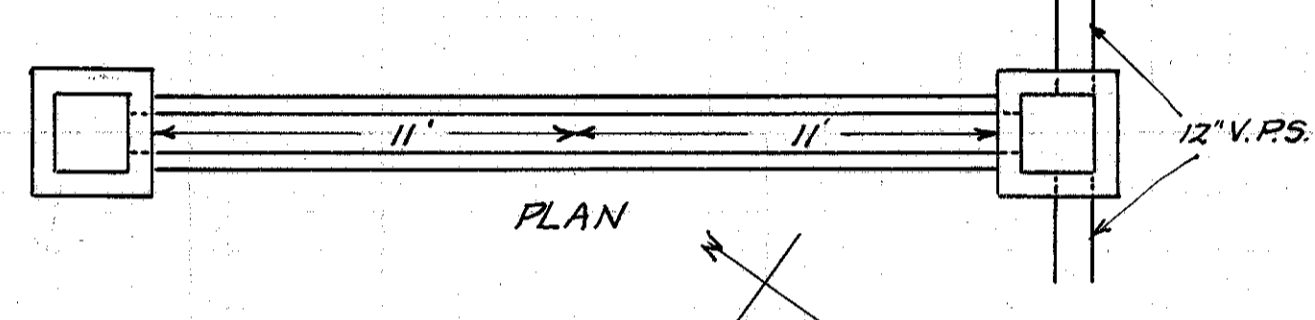
30 25 20 15 10 5 ± 5 10 15 20



CULVERT DATA
 Type: Std. V.S.P. culvert Dr. #300
 Size: 12" x 46'
 Work Req. Build 12" x 46' Std. V.P. (enc.) culvert.
 C.B. on L. I.B. on R.
 Drawn by Cumings & Plummer Checked by
 Date 3/31/28 Date

EST. QUANTITIES
 Exc. 21.0 Cu. Yds.
 Conc. 1-8 4.83 Cu. Yds.
 12" V.P. 46 Lin. Ft.
 C.B. 1
 I.B. 1
 Div'n. Engr. Sta. 59+0 L to 59+40 R.

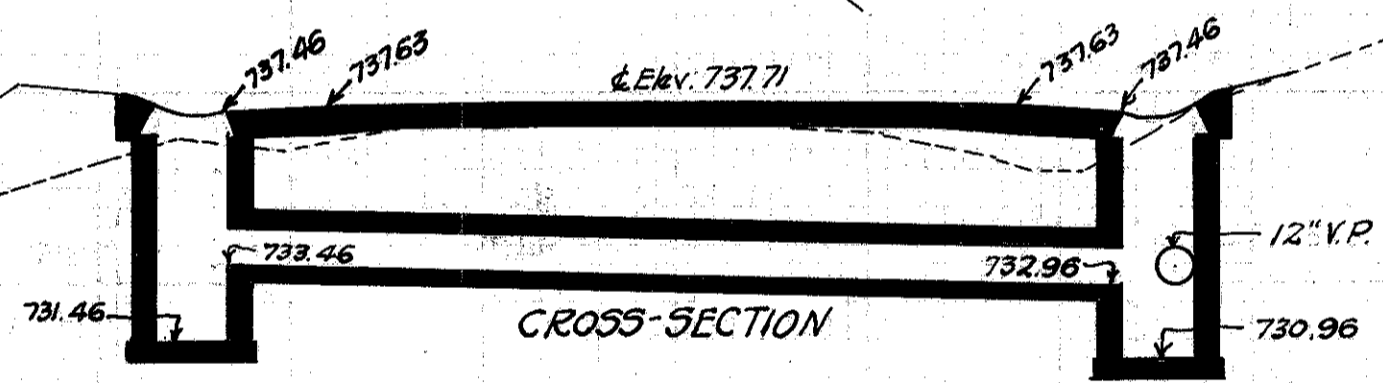
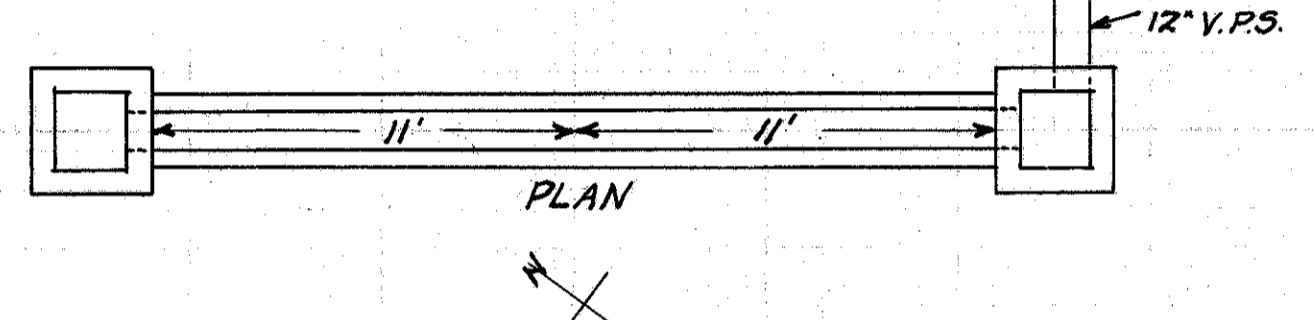
30 25 20 15 10 5 ± 5 10 15 20 25 30



CULVERT DATA
 Type: Std. V.S.P. culvert Dr. #300
 Size: 12" x 24'
 Work Req. Build 12" x 24' Std. V.P. (enc.) culvert
 I.B. on R. C.B. on L.
 Drawn by Cumings & Plummer Checked by
 Date 3/31/28 Date

EST. QUANTITIES
 Exc. 7.2 Cu. Yds.
 Conc. 1-8 2.38 Cu. Yds.
 12" V.P. 24 Lin. Ft.
 C.B. 1
 I.B. 1
 Div'n. Engr. Sta. 40+0

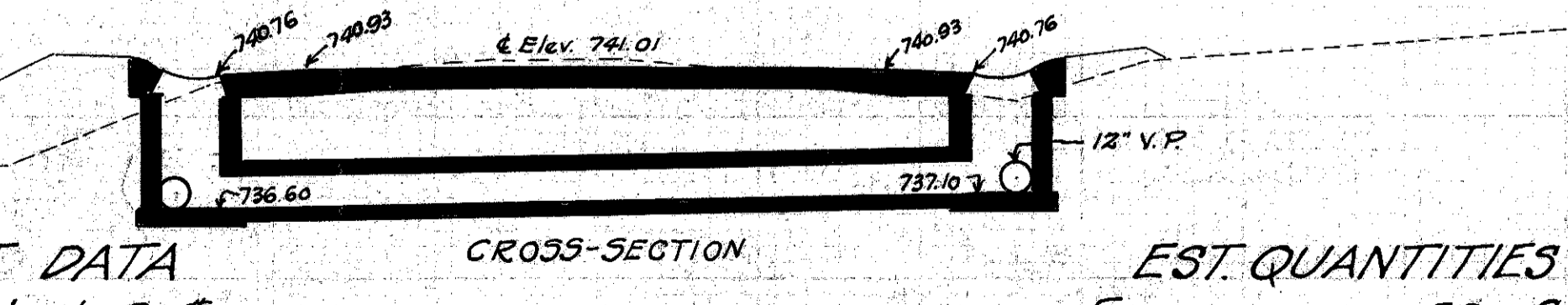
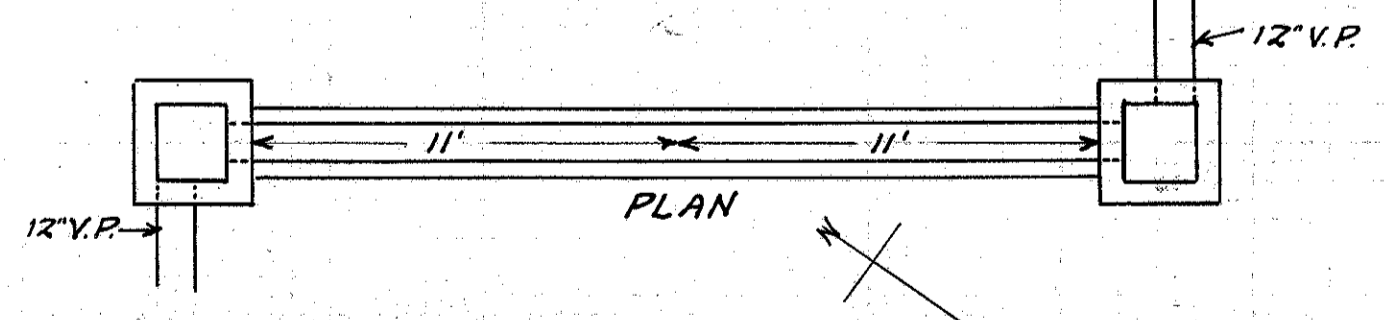
30 25 20 15 10 5 ± 5 10 15 20



CULVERT DATA
 Type: Std. V.S.P. culvert Dr. #300
 Size: 12" x 24'
 Work Req. Build 12" x 24' Std. V.P. (enc.) culvert
 C.B. R+L.
 Drawn by Cumings & Plummer Checked by
 Date 3/31/28 Date

EST. QUANTITIES
 Exc. 6.7 Cu. Yds.
 Conc. 1-8 2.38 Cu. Yds.
 12" V.P. 24 Lin. Ft.
 C.B. 2
 Div'n. Engr. Sta. 53+50

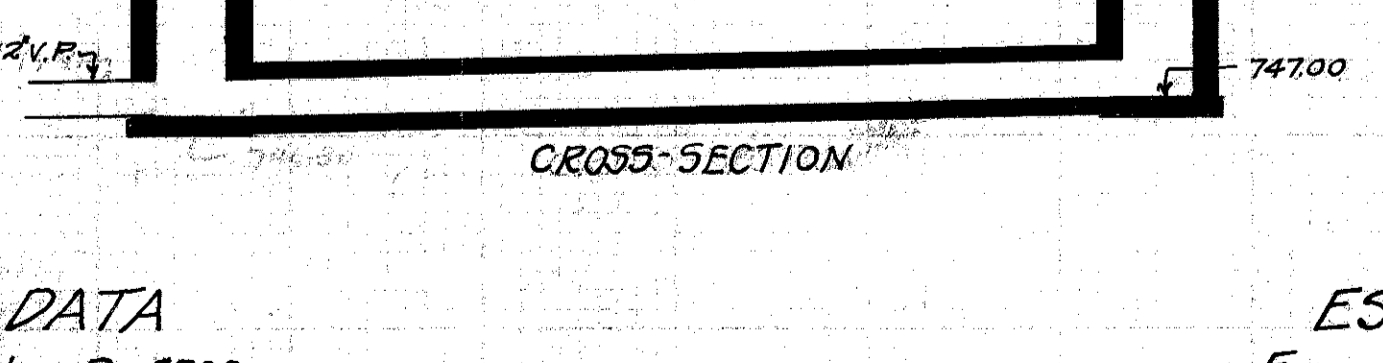
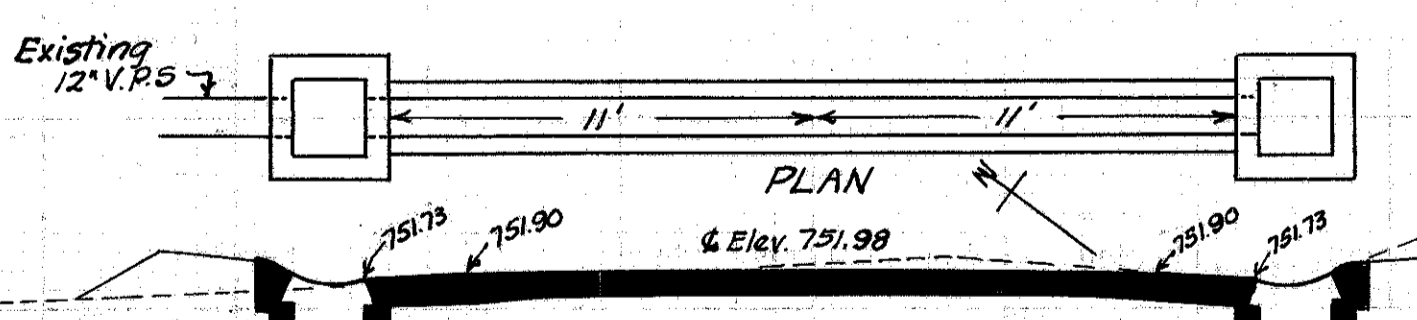
30 25 20 15 10 5 ± 5 10 15 20 25 30



CULVERT DATA
 Type: Std. V.S.P. culvert Dr. #300
 Size: 12" x 24'
 Work Req. Build 12" x 24' Std. V.P. (enc.) culvert.
 I.B. on R+L.
 Drawn by Cumings & Plummer Checked by
 Date 3/31/28 Date

EST. QUANTITIES
 Exc. 7.2 Cu. Yds.
 Conc. 1-8 2.38 Cu. Yds.
 12" V.P. 24 Lin. Ft.
 I.B. 2
 Div'n. Engr. Sta. 35+25

30 25 20 15 10 5 ± 5 10 15 20



CULVERT DATA
 Type: Std. V.S.P. culvert Dr. #300
 Size: 12" x 24'
 Work Req. Remove 24' length 12" V.P. + Build 12" x 24' Std. V.P. (enc.) culvert.
 relaying present pipe. I.B. on R+L
 Drawn by Cumings & Plummer Checked by
 Date 3/31/28 Date

EST. QUANTITIES
 Exc. 1 9.1 Cu. Yds.
 Conc. 1-8 2.38 Cu. Yds.
 12" V.P. Removed + Relaid 24 Lin. Ft.
 I.B. 2
 Div'n. Engr. Sta. 46+06