

S.H.(I.C.H.) No. 563 Sec. Wickliffe + B. LAKE COUNTY.

STA 162+50 TO 167+45.97									
LEFT CENTER LINE					RIGHT CENTER LINE				
STATION	W	STA.	GRADE	DEFLEC.	W	STA.	GRADE	DEFLEC.	W
0.0	776.34	162+50	776.34		11	776.34	0.0		
0.13	776.72	162+75	775.97						
0.21	776.91	163+0	775.64						
0.40	777.71	163+25	775.32						
0.54	775.53	PC 163+50	775.01	0°-00'					
0.67	775.43	163+75	774.76	0°-23'-10"					
0.80	775.32	164+0	774.52	0°-46'-20"					
	775.14	164+25	774.34	1°-09'-30"					
	774.96	164+50	774.16	1°-32'-40"					
	774.85	164+75	774.05	1°-55'-50"					
	774.74	165+0	773.94	2°-19'-00"					
	774.66	165+25	773.86	2°-42'-10"					
	774.57	165+50	773.77	3°-05'-20"					
	774.52	165+75	773.72	3°-28'-30"					
0.80	774.45	165+99.97	773.65	3°-51'-40"					
0.88	774.42	166+0	773.64	3°-51'-40"					
0.98	774.17	166+25	773.54	4°-14'-50"					
0.94	774.04	PC 166+49.97	773.46	4°-34'-15"					
0.92	773.97	166+50	773.45						
0.99	773.90	166+75	773.31						
0.26	773.93	167+0	773.17						
0.13	773.10	167+25	772.97						
0.0	772.85	167+45.97	772.85		11	772.85	0.0		

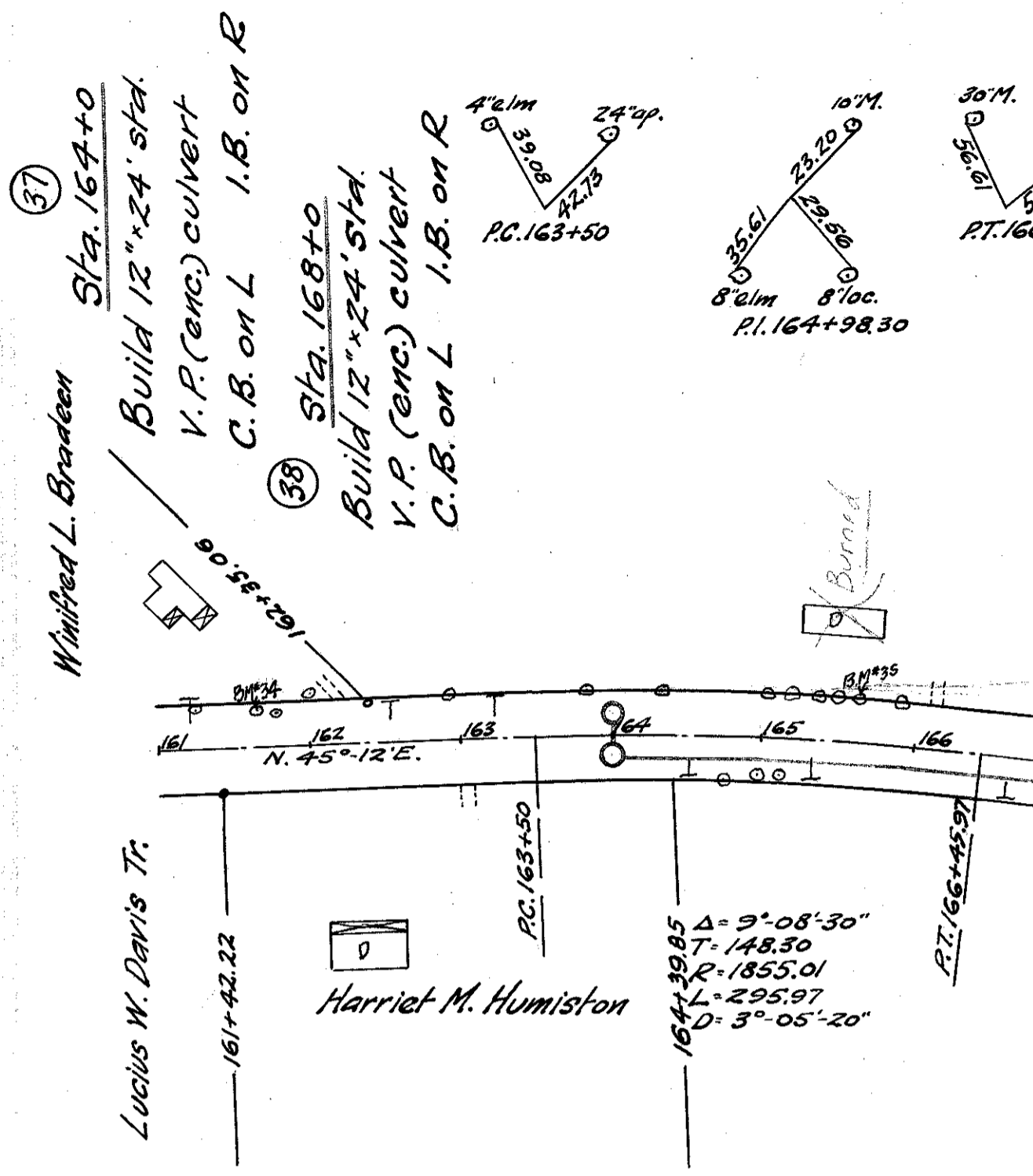
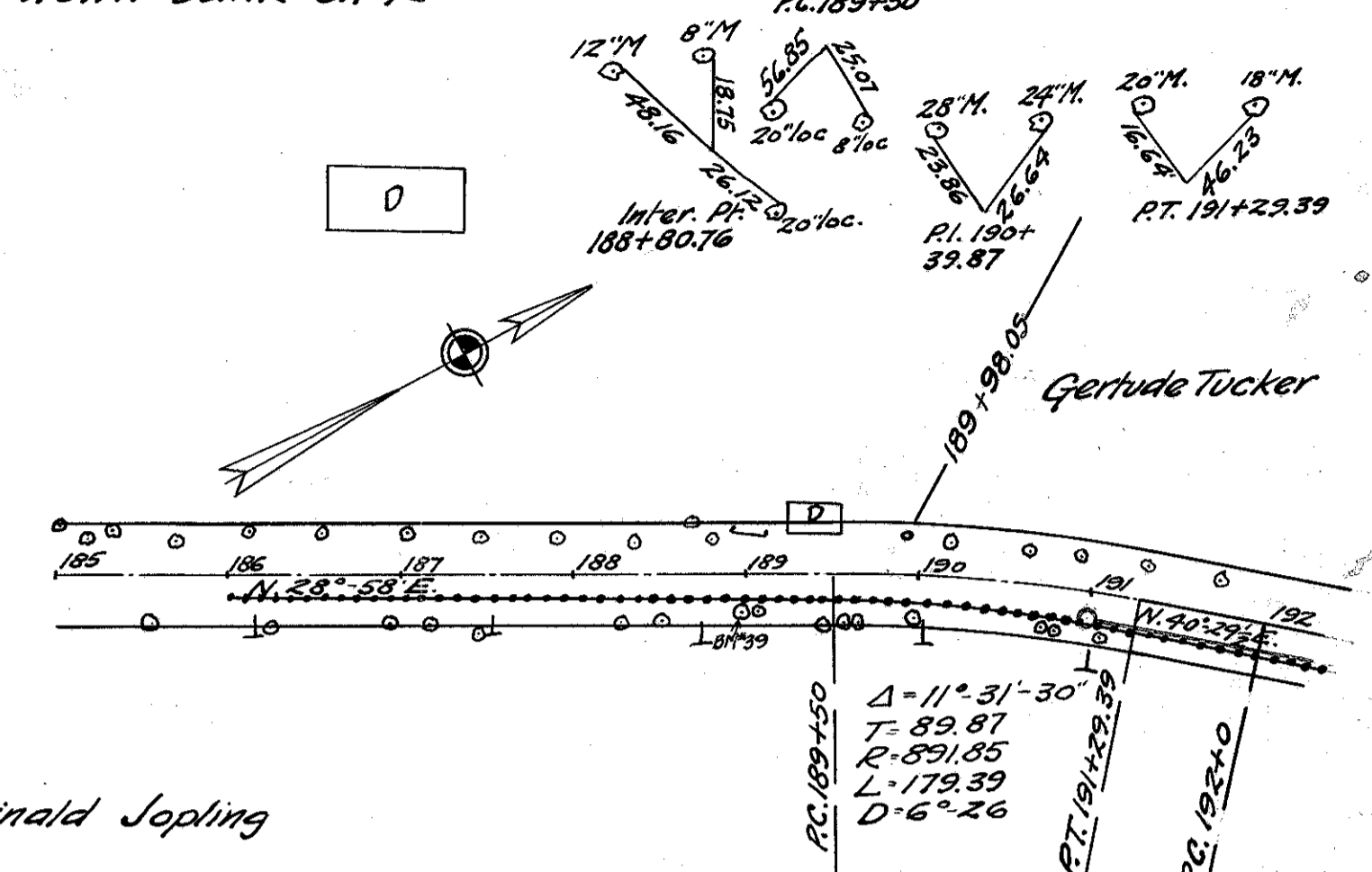
STA 188+50 TO 192+29.39									
LEFT CENTER LINE					RIGHT CENTER LINE				
STATION	W	STA.	GRADE	DEFLECTION	W	STA.	GRADE	DEFLECTION	W
0	754.78	188+50	754.70		110	754.70	0.0		
25	754.04	189+75	753.79		1108	753.79			
30	753.38	189+0	752.88		1132	752.88			
75	752.72	189+25	751.97		1173	751.97			
100	752.06	PC 189+50	751.06	0°-00'	1233	751.06			
126	751.41	189+75	750.15	0°-48'-15"	1297	750.15			
152	750.76	190+0	749.24	1°-36'-30"	1325	749.24			
	749.85	190+25	748.33	2°-24'-45"		748.33			
	749.24	190+50	747.42	3°-13'-00"		747.42			
	748.71	190+75	746.57	4°-01'-15"		746.57			
152	747.96	PC 189+50	746.46	4°-09'-15"	1325	746.46			
129	747.05	191+0	745.76	4°-49'-30"	1306	745.76			
104	746.37	191+25	745.05	5°-37'-45"	1246	745.05			
100	745.63	PT 191+29.39	744.65	5°-45'-45"	1233	744.65			
79	745.12	191+50	744.33		1191	744.33			
54	744.51	191+75	743.77		1137	743.77			
57	743.79	192+0	743.32		1111	743.32			
71	743.19	192+25	742.78		1101	742.78			
73	743.04	192+29.39	742.27		11	742.27			

STA 172+0 TO 175+89.34									
LEFT CENTER LINE					RIGHT CENTER LINE				
STATION	W	STA.	GRADE	DEFLEC.	W	STA.	GRADE	DEFLEC.	W
0.0	768.24	172+0	768.24		11	768.24	0.0		
	767.88	172+25	767.88						
	767.52	172+50	767.52						
	767.17	172+75	767.17						
	766.82	PC 173+0	766.82	0°-00'					
	766.51	173+25	766.51	1°-40'-45"					
	766.21	173+50	766.21	3°-21'-30"					
	765.95	173+75	765.95	5°-02'-15"					
	765.77	174+0	765.70	6°-43'-00"					
	765.44	174+25	765.47	8°-23'-45"					
	765.37	174+39.34	765.37	9°-21'-21"					
	765.23	174+50	765.28	10°-04'-30"					
	765.10	174+75	765.10	11°-45'-15"					
	764.99	PC 174+89.34	764.99	12°-41'-15"					
	764.91	175+0	764.91						
	764.73	175+25	764.73						
	764.54	175+50	764.54						
	764.36	175+75	764.36						
0	764.25	175+89.34	764.25		11	764.25	0.0		

Sta. 184+25 14' to R to 184+50 60' to R
Lay 50'-12" V.P. sewer average cut 5'

Sta. 184+50 60' to R Build drop manhole

Sta. 184+50 From drop manhole 60' to R
Lay 300'-12" corr. iron pipe down bank on R
see detail below



BM*34 Sta 161+64
Spike in root 30' Elm
20' to L of \pm
Elev. 778.19

BM*35 Sta 165+63
Spike in root 26' M.
28' to L of \pm
Elev. 776.70

BM*36 Sta 175+11
Spike in root 15' M.
17' to R of \pm
Elev. 765.51

BM*37 Sta 180+31
Spike in root 18' M.
15' to L of \pm
Elev. 761.15

BM*38 Sta. 184+71
Spike in root 15' M.
13' to L of \pm
Elev. 755.09

BM*39 Sta 188+96
Spike in root 20' Loc.
19' to R of \pm
Elev. 753.94

