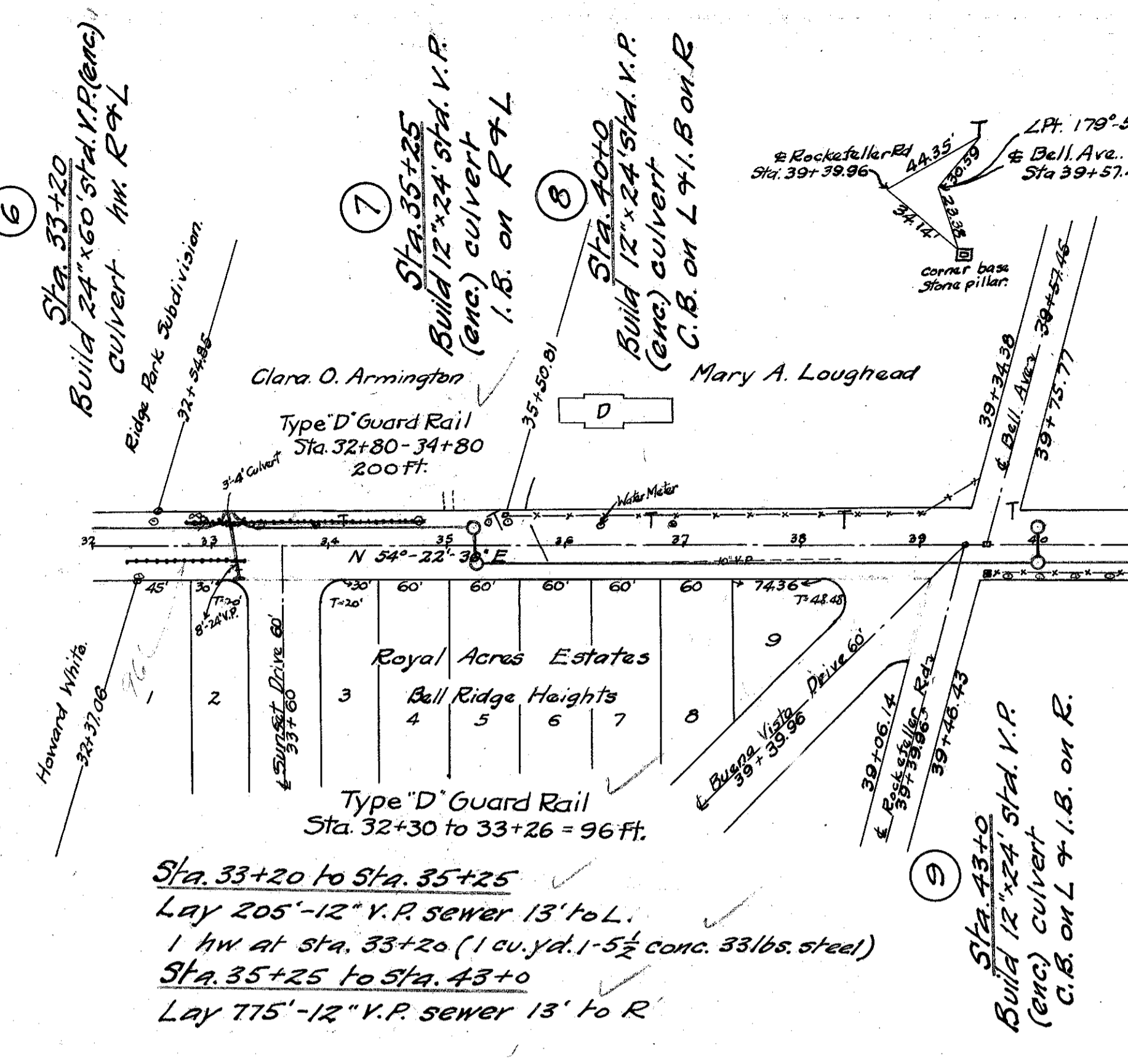


SH. (U.G.H.) No. 563 Sec. Wickliffe + B LAKE COUNTY

STA. 48+0 TO 51+19.77									
LEFT		CENTER LINE						RIGHT	
EL. EDGE	W	STA.	GRADE	DEFLEC.	W	EL. EDGE	W	EL. EDGE	W
0	753.45	48+0	753.45			753.45	0	753.45	0
1	753.64	48+25	753.64			753.71	.07	753.71	.07
2	753.83	48+50	753.83			753.96	.13	753.96	.13
3	754.02	48+75	754.02			755.22	.20	755.22	.20
4	754.21	RC. 49+0	754.21	0°-00'		754.48	.27	754.48	.27
5	754.32	49+25	754.32	0°-09'-18"		754.66	.34	754.66	.34
6	754.28	49+50	754.28	0°-18'-37"		754.68	.40	754.68	.40
7	754.08	49+75	754.08	0°-27'-55"		754.78	.40	754.78	.40
8	753.87	49+99.54	753.87	0°-38'-31"		754.87	.40	754.87	.40
9	753.72	50+0	753.72	0°-37'-15"		754.98	.36	754.98	.36
10	753.71	50+25	753.71	0°-46'-53"		755.52	.81	755.52	.81
11	752.83	PT. 50+39.54	752.83	0°-52'-30"		755.10	.27	755.10	.27
12	752.55	50+50	752.55			755.78	.23	755.78	.23
13	751.73	50+75	751.73			755.88	.15	755.88	.15
14	750.75	51+0	750.75			755.82	.07	755.82	.07
15	749.92	51+19.77	749.92			749.92	0	749.92	0

STA. 51+19.77 TO 53+50									
LEFT		CENTER LINE						RIGHT	
EL. EDGE	W	STA.	GRADE	DEFLEC.	W	EL. EDGE	W	EL. EDGE	W
0	749.86	51+19.77	749.86			749.86	0	749.86	0
1	749.63	51+25	749.61			749.61		749.61	
2	748.47	51+50	748.32			748.32		748.32	
3	747.21	51+75	746.95			746.95		746.95	
4	745.98	RC. 52+0	745.57	0°-00'		745.57		745.57	
5	744.74	52+25	744.20	0°-17'-37"		744.20		744.20	
6	743.48	52+50	742.82	0°-35'-15"		742.82		742.82	
7	741.95	52+75	740.75	0°-52'-52"		740.75		740.75	
8	740.48	PT. 52+99.18	740.15	1°-10'		740.15		740.15	
9	739.08	53+0	740.12			740.12		740.12	
10	737.71	53+25	738.87			738.87		738.87	
11	737.71	53+50	737.71			737.71	0	737.71	0

STA. 53+50 TO 58+92.03									
LEFT		CENTER LINE						RIGHT	
EL. EDGE	W	STA.	GRADE	DEFLEC.	W	EL. EDGE	W	EL. EDGE	W
0	737.71	53+50	737.71			737.71	0	737.71	0
1	736.32	53+75	736.43			736.43		736.43	
2	736.22	54+0	735.64			735.64		735.64	
3	735.60	54+25	734.78			734.78		734.78	
4	735.00	RC. 54+50	733.92	0°-00'		733.92		733.92	
5	734.61	54+75	733.17	1°-20'		733.17		733.17	
6	734.24	55+0	732.52	2°-40'		732.52		732.52	
7	733.67	55+25	731.95	4°-00'		731.95		731.95	
8	733.20	55+50	731.18	5°-20'		731.18		731.18	
9	732.78	55+75	731.06	6°-40'		731.06		731.06	
10	732.19	56+0	730.77	8°-00'		730.77		730.77	
11	732.27	56+25	730.45	9°-20'		730.45		730.45	
12	732.18	56+50	730.41	10°-40'		730.41		730.41	
13	732.08	56+75	730.36	12°-00'		730.36		730.36	
14	732.11	57+0	730.39	13°-20'		730.39		730.39	
15	732.23	57+25	730.51	14°-40'		730.51		730.51	
16	732.34	57+50	730.61	15°-46'		730.61		730.61	
17	732.34	57+75	730.67	16°-00'		730.67		730.67	
18	732.21	57+75	730.83	17°-20'		730.83		730.83	
19	732.07	PT. 57+99.18	730.74	18°-23'		730.74		730.74	
20	731.84	58+0	730.90	19°-00'		730.90		730.90	
21	731.71	58+25	731.11	19°-40'		731.11		731.11	
22	731.80	58+50	731.25	20°-00'		731.25		731.25	
23	731.67	58+75	731.40	20°-40'		731.40		731.40	
24	731.57	58+92.03	731.57			731.57	0	731.57	0



B.M. #6 Sta. 32+87 Spike in root 12" Elm stump 17'60 L. of C. Elev. 744.21	B.M. #7 Sta. 36+90 S. cap bolt fire plug 16'60 L. of C. Elev. 743.83	B.M. #8 Sta. 41+23 Spike in root 15" M. 25'60 R. of C. Elev. 749.01	B.M. #9 Sta. 46+21 Spike in side 12" Elm 26'60 L. of C. Elev. 752.16	B.M. #10 Sta. 51+28 Spike in side 6" M. 18'60 L. of C. Elev. 749.45	B.M. #11 Sta. 53+99 Spike in side 40" Elm 26'60 R. of C. Elev. 740.51	B.M. #12 Sta. 55+71 Spike in root 24" M. 18'60 R. of C. Elev. 734.44	B.M. #13 Sta. 60+60 Spike in side 16" M. 19'60 R. of C. Elev. 733.71
---	---	--	---	--	--	---	---

