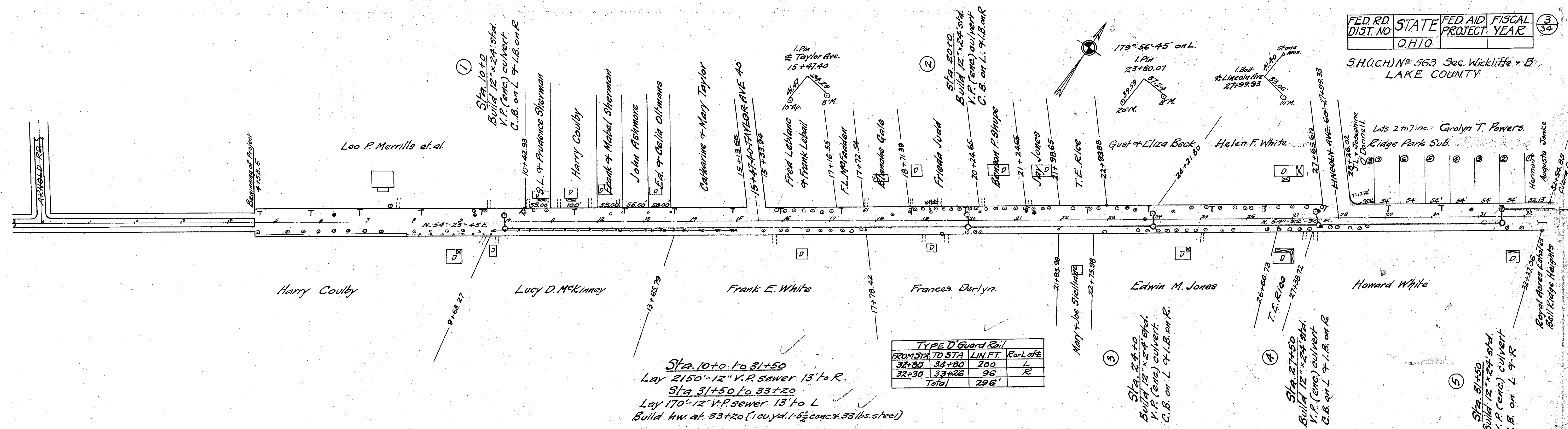


S.H.(C.H.N) # 563, Sec. Wickliffe + B. LAKE COUNTY



FROM STA TO STA	LIN. FT.	Req. Lofs
32+80	34+80	200 L
32+30	33+26	96 R
Total		296'

Sta. 10+0 to 31+50  
Lay 2150'-12" V.P. sewer 13' to R.  
Sta 31+50 to 33+20  
Lay 170'-12" V.P. sewer 13' to L  
Build hw. at 33+20 (1 cu. yd. 1-5/2 conc. + 33 lbs. steel)

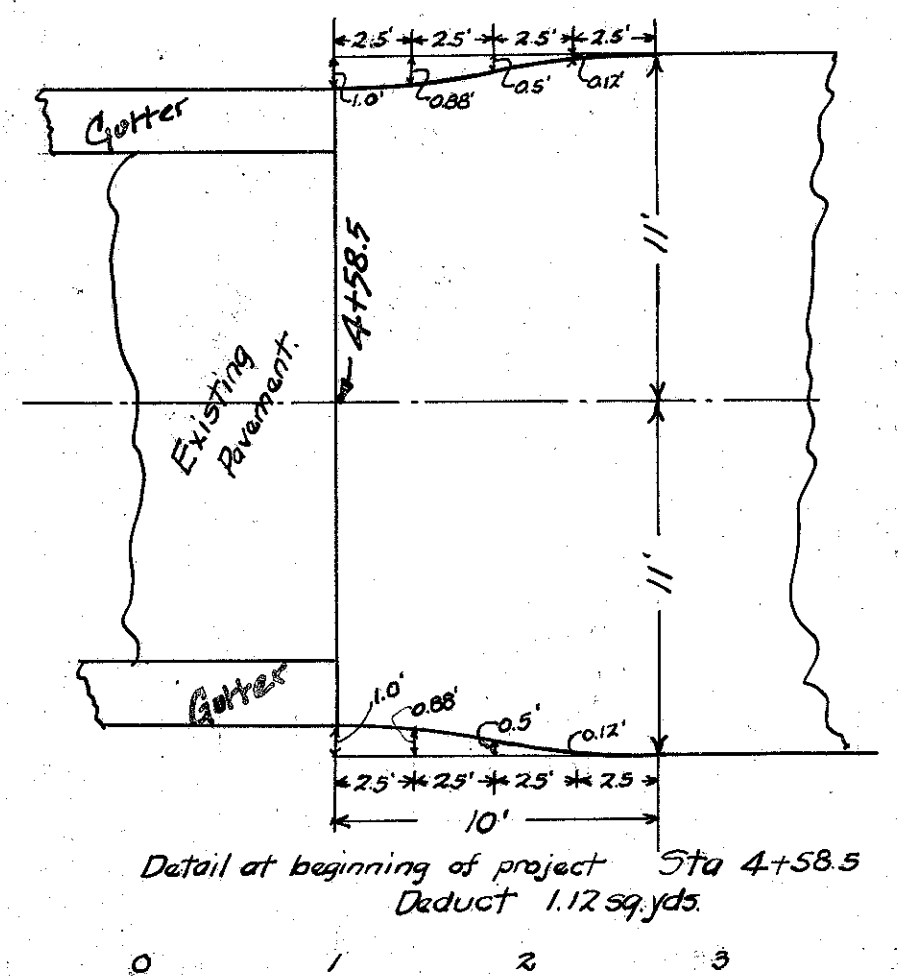
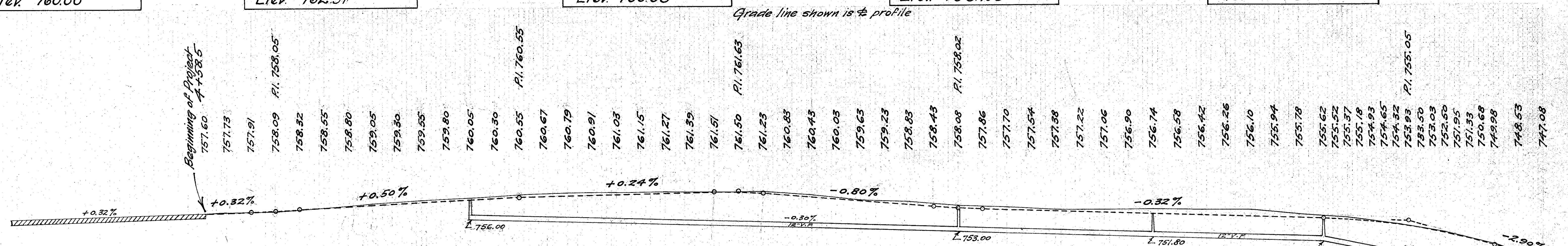
B.M.#1 Sta. 6+62  
Spike in root 15" M.  
19' to R. of C.  
Elev. 760.00

B.M.#2 Sta. 12+32  
S. cap bolt to fire plug  
15' to L. of C.  
Elev. 762.51

B.M.#3 Sta. 17+95  
Spike in root 36" M.  
24' to L. of C.  
Elev. 760.08

B.M.#4 Sta. 22+95  
Spike in root 40" M.  
23' to R. of C.  
Elev. 759.29

B.M.#5 Sta. 28+23  
Spike in root 14" M.  
21' to R. of C.  
Elev. 757.50



Note: - Waste Excavation to be dumped by contractor on land abutting the improvement as requested by land owners. Haul not to exceed 200 Ft. from side line of road. Cost to be included in price bid for excavation.

STATION	SURFACE	ELEVATIONS
5		757.60
6	Exc. 223.6 cu.yds. Emb. 136.6 cu.yds. Waste 58.3 cu.yds.	757.9
7		758.6
8		759.4
9		760.0
10		760.4
11		761.0
12		761.3
13		761.4
14	Exc. 887.4 cu.yds. Emb. 151.5 cu.yds. Waste 698.0 cu.yds.	761.5
15		761.5
16		761.7
17		760.9
18		759.8
19		759.3
20		758.6
21		758.1
22	Exc. 667.6 cu.yds. Emb. 128.4 cu.yds. Waste 507.1 cu.yds.	757.7
23		757.6
24		757.7
25		757.5
26		757.4
27		756.5
28		755.8
29	Exc. 341.2 cu.yds. Emb. 268.4 cu.yds. Waste 5.7 cu.yds.	754.6
30		752.7
31		750.1
32		746.7