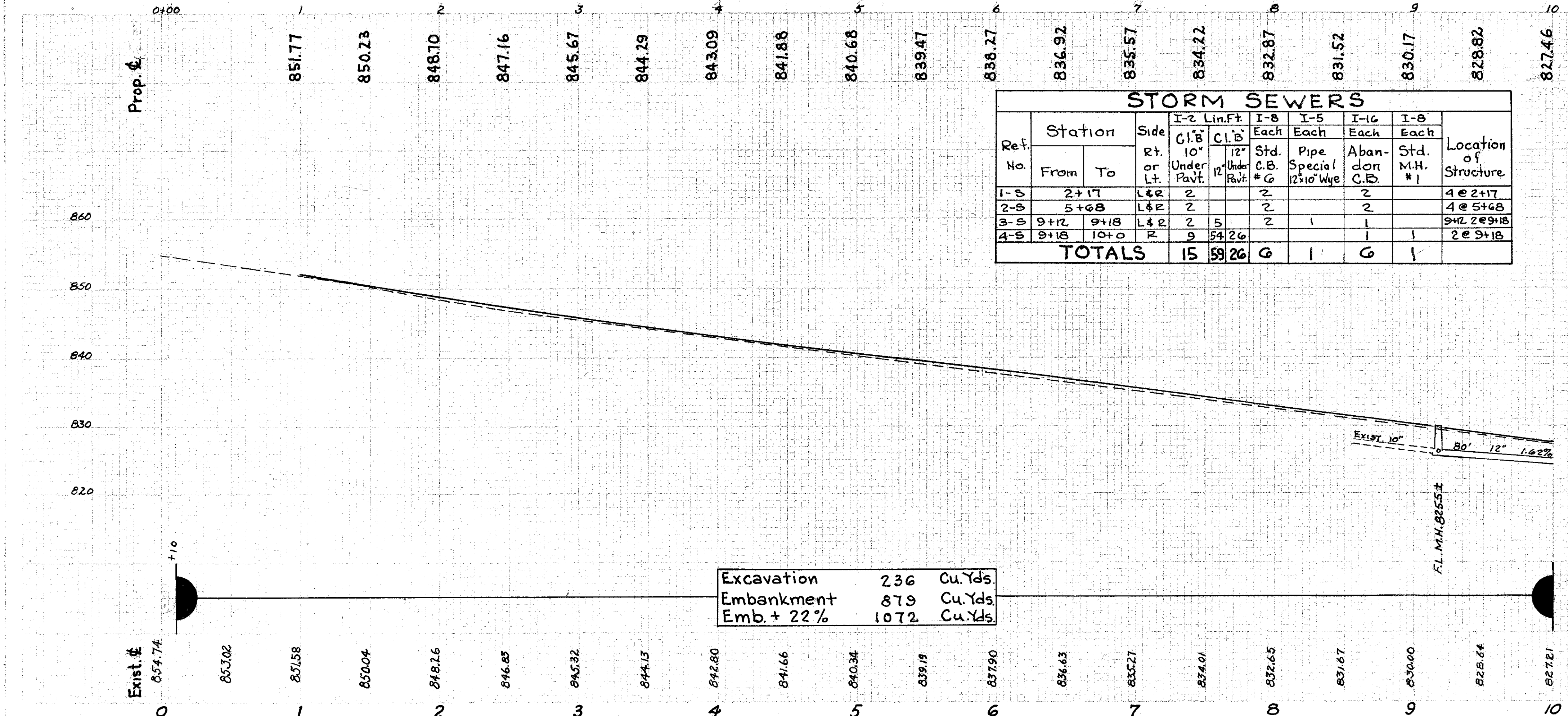
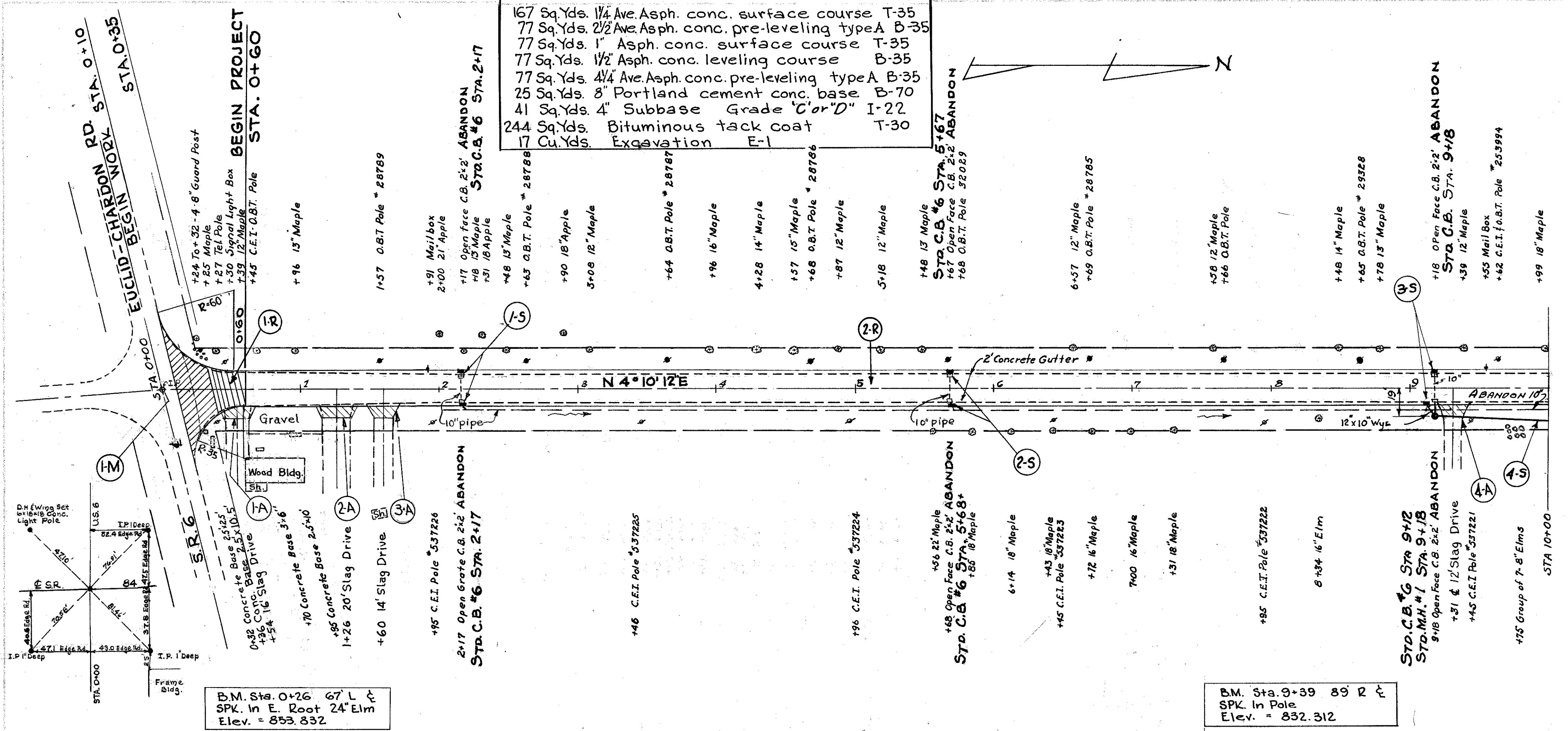


U.S.#6 & S.R.#84 EXTRA AREA

- 167 Sq.Yds. 1/4" Ave. Asph. conc. surface course T-35
- 77 Sq.Yds. 2 1/2" Ave. Asph. conc. pre-leveling type A B-35
- 77 Sq.Yds. 1" Asph. conc. surface course T-35
- 77 Sq.Yds. 1/2" Asph. conc. leveling course B-35
- 77 Sq.Yds. 4 1/4" Ave. Asph. conc. pre-leveling type A B-35
- 25 Sq.Yds. 8" Portland cement conc. base B-70
- 41 Sq.Yds. 4" Subbase Grade "C or D" I-22
- 244 Sq.Yds. Bituminous tack coat T-30
- 17 Cu.Yds. Excavation E-1



Ref. No.	Station		Side R. or L.	Lin. Ft.		I-2 Under Pavt.	I-8 C.P. #	I-5 Special 12x10 Wye	I-16 Aban-don C.P.D.	I-8 Std. M.H. #	Location of Structure
	From	To		10' Under Pavt.	12' Under Pavt.						
1	2+17	2+17	L	2		2					4 @ 2+17
2	5+68	5+68	L	2		2					4 @ 5+68
3	9+12	9+18	L	2	5	2					9 @ 2 @ 9+18
4	9+18	10+0	R	9	26	2					2 @ 9+18
<b>TOTALS</b>				<b>15</b>	<b>59</b>	<b>26</b>	<b>6</b>	<b>1</b>	<b>6</b>	<b>1</b>	

ESTIMATED QUANTITIES

REP. NO.	STATION TO	DRIVEWAYS	T-35 for Drives	B-119 for Drives	E-1 Excavation	E-8 Rem. of Dis. Reset	I-8 Mon Box	
1-A	0+54	4						
2-A	1+26	3						
3-A	1+60	2						
4-A	9+31	2						
1-R	0+10 to 0+60							
2-R	0+60 to 10+00							
1-M	0+00							
<b>TOTALS</b>							228	1671

PLAN & PROFILE STA. 0+00 to STA. 10+00

4 10 14 1899 1