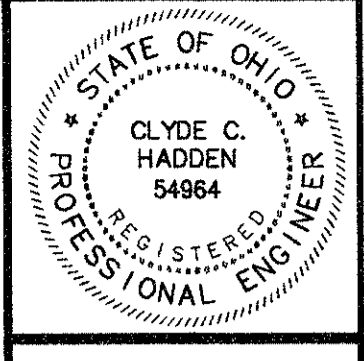
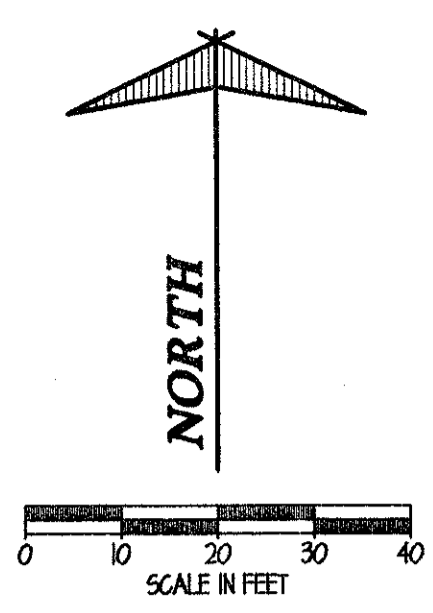


NOTE: POWER TO BE OBTAINED FROM RELOCATED POWER POLE @ NW CORNER.

PB1: STA 55+61, 25.5' LT
CONTROLLER: STA 55+61, 34' LT

PB2: STA 55+64.5, 37' LT
P1: STA 55+67, 35' LT
TC-81.20, DESIGN 3, 32' ARM

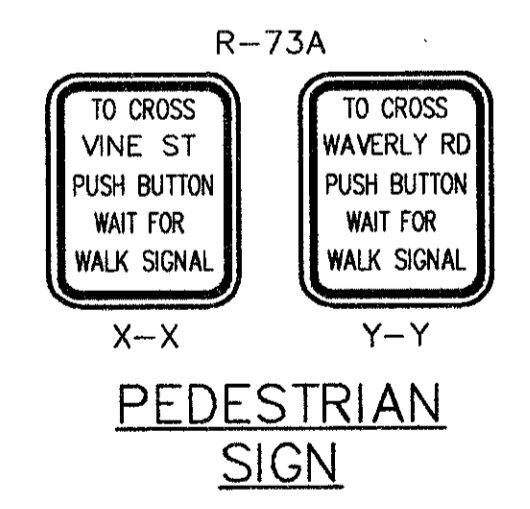
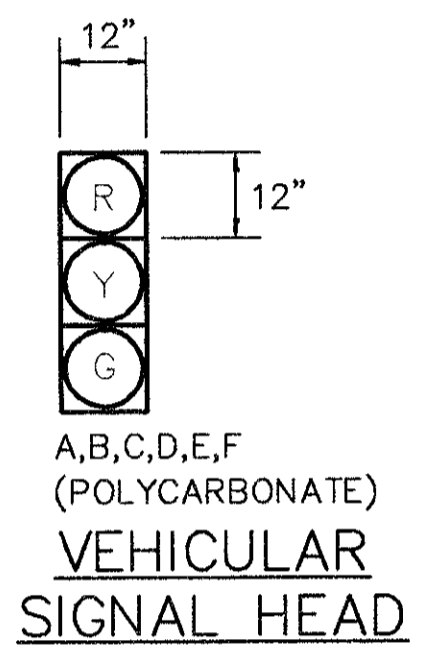
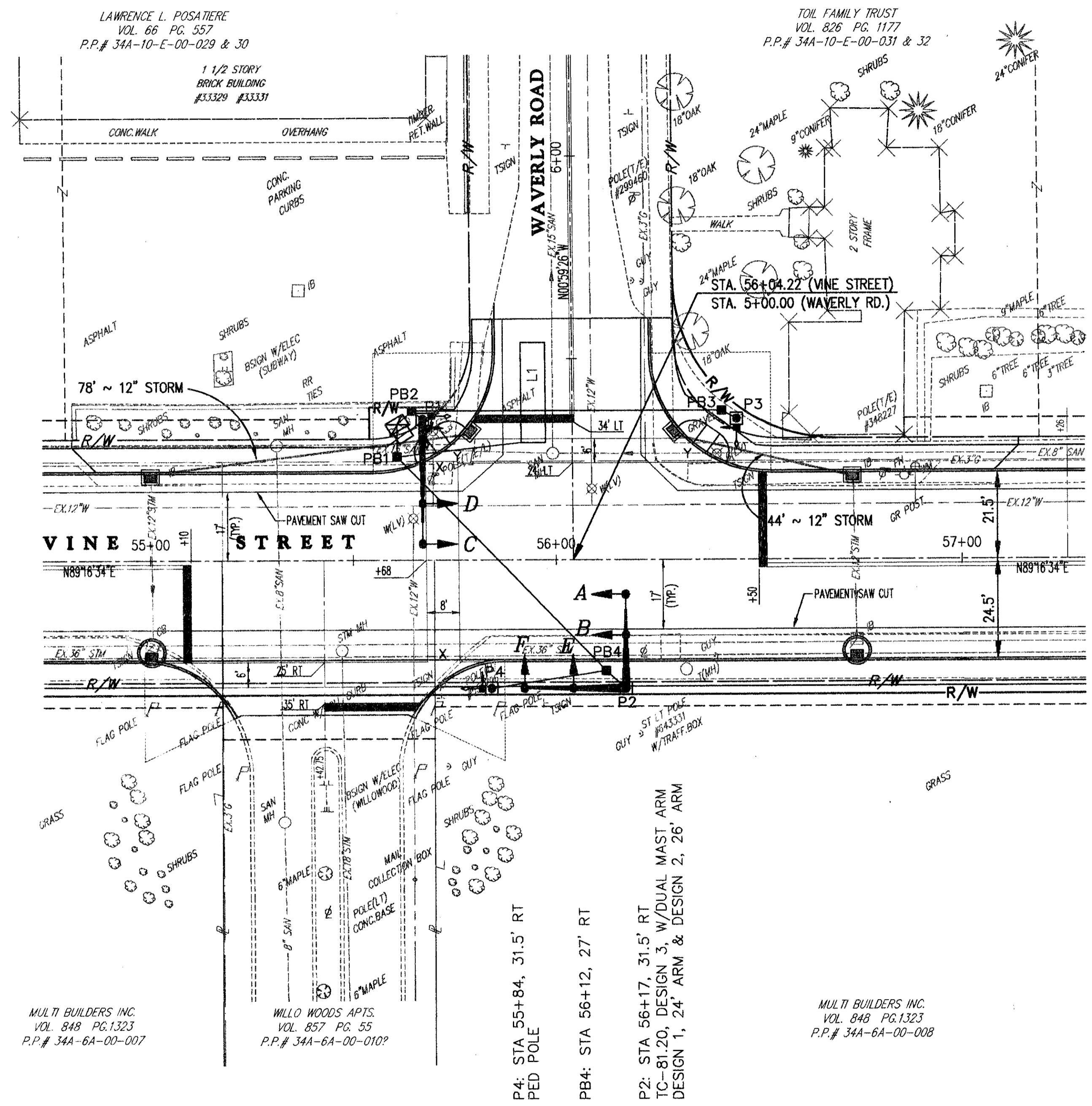
PB3: STA 56+41, 37' LT
P3: STA 56+44.5, 35' LT
PED POLE



SUBMISSIONS / REVISIONS

VINE STREET (S.R. 640) ROADWAY WIDENING IMPROVEMENTS
CITIES OF WILLOWICK & EASTLAKE, LAKE COUNTY, OHIO

TRAFFIC SIGNAL PLAN
VINE STREET / WAVERLY ROAD INTERSECTION



NOTE: RELOCATED UTILITIES SHALL HAVE A MINIMUM CLEARANCE OF 23 FEET TO AVOID TOP OF SIGNAL POLE, WHICH WILL BE DIRECTLY BELOW THE RELOCATED LINES.

LOOP	SIZE	TURNS	MODE	DELAY	PHASE	REMARK	INHIBITED DELAY	LOCATION 1st FRONT CORNER	LOCATION 2nd FRONT CORNER
L-1	6x25	2	PRESENCE	-	\$4	STANDARD	-	STA. 55+92, 78' LT	STA. 55+98, 78' RT

LOOP DETECTOR CHART

CT Consultants, Inc.
Engineers • Architects • Planners
Willoughby • Mentor • Columbus • North Canton • Youngstown

DATE: JANUARY, 2000

DRAWN BY: T.E.B.

CHECKED BY: A.E.P.

APPROVED BY: _____

SCALE:
HOR: 1" = 20'
VERT: -

CONTRACT No.
9840624

SHEET NO. OF
48 52