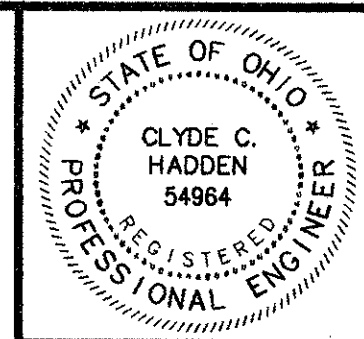
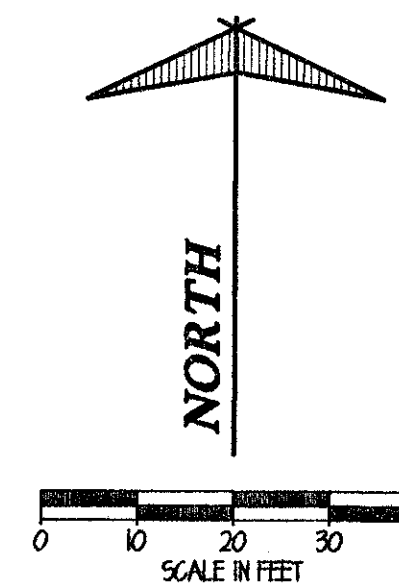


FOR INTERSECTION GRADING AND GEOMETRIC  
DETAILS, SEE SHEETS 19 & 20

FOR DRIVEWAY REPLACEMENT SCHEDULE  
AND DETAILS, SEE SHEET 37

FOR DRIVEWAY PROFILES, SEE SHEETS 32 THRU 36

 DENOTES AREA OF ASPHALT  
PAVEMENT WIDENING



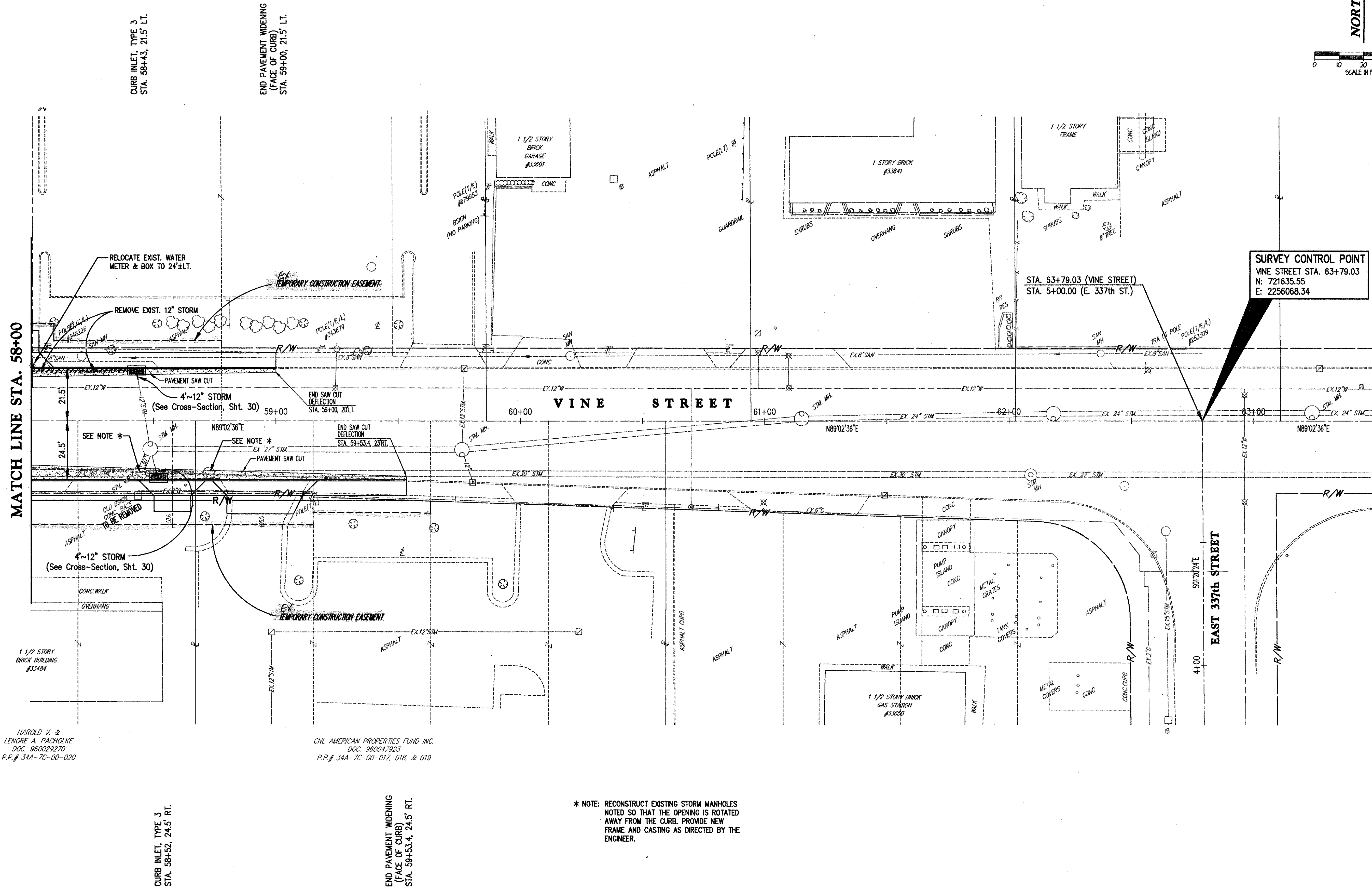
SUBMISSIONS / REVISIONS


**VINE STREET (S.R. 640) ROADWAY  
WIDENING IMPROVEMENTS**  
CITIES OF WILLOWICK & EASTLAKE, LAKE COUNTY, OHIO

**PLAN SHEET**  
STA. 58+00 TO END

**CT Consultants, Inc.**  
Engineers • Architects • Planners  
Willoughby • Mentor • Columbus • North Canton • Youngstown

DATE:	OCTOBER, 1999
DRAWN BY:	J.J.C.
CHECKED BY:	C.C.H.
APPROVED BY:	
SCALE:	HOR: 1" = 20'
VERT:	
CONTRACT NO.	9840624
SHEET NO.	17
OF	52



CURB INLET, TYPE 3  
STA. 58+43, 21.5' LT.

END PAVEMENT WIDENING  
(FACE OF CURB)  
STA. 59+00, 21.5' LT.

CURB INLET, TYPE 3  
STA. 58+52, 24.5' RT.

END PAVEMENT WIDENING  
(FACE OF CURB)  
STA. 59+53.4, 24.5' RT.

\* NOTE: RECONSTRUCT EXISTING STORM MANHOLES  
NOTED SO THAT THE OPENING IS ROTATED  
AWAY FROM THE CURB. PROVIDE NEW  
FRAME AND CASTING AS DIRECTED BY THE  
ENGINEER.

HAROLD V. &  
LENORE A. PACHOLKE  
DOC. 960029270  
P.P.# 34A-7C-00-020

CNL AMERICAN PROPERTIES FUND INC.  
DOC. 960047923  
P.P.# 34A-7C-00-017, 018, & 019

COPYRIGHT - DATE: 12-07-99 16:34, CT CONSULTANTS INC. H:\1999\640624\DWG\9840624.DWG