

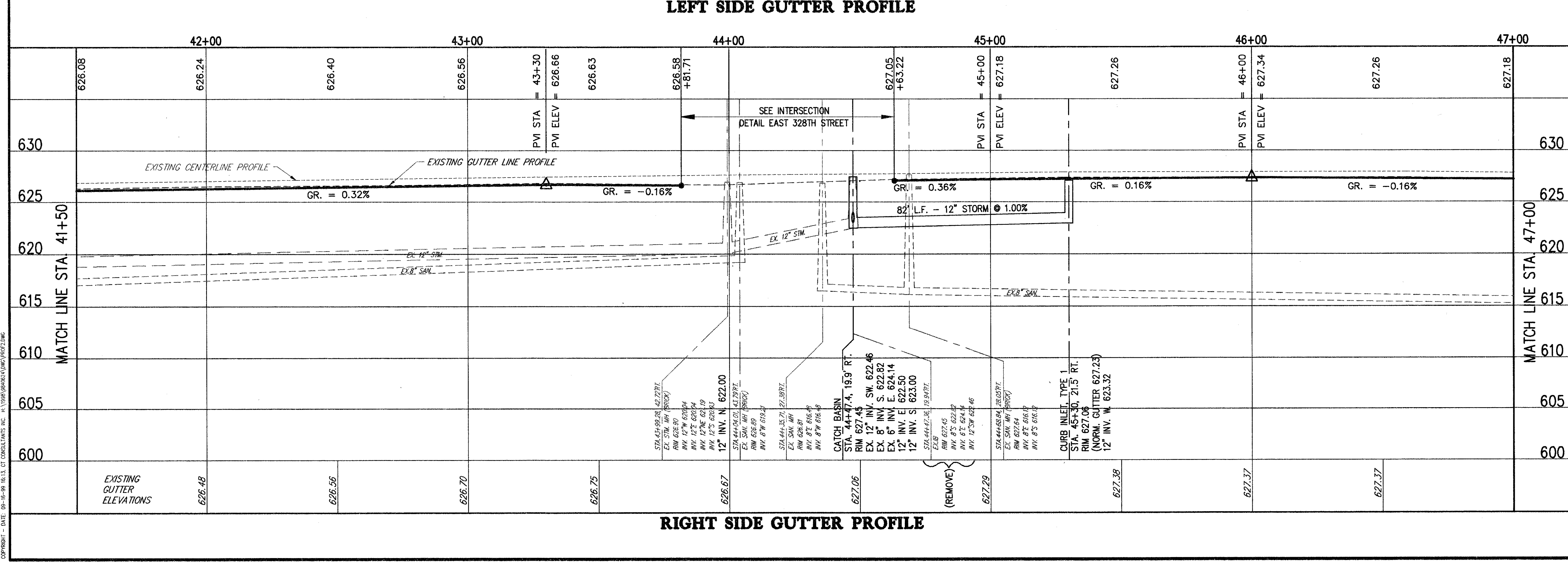
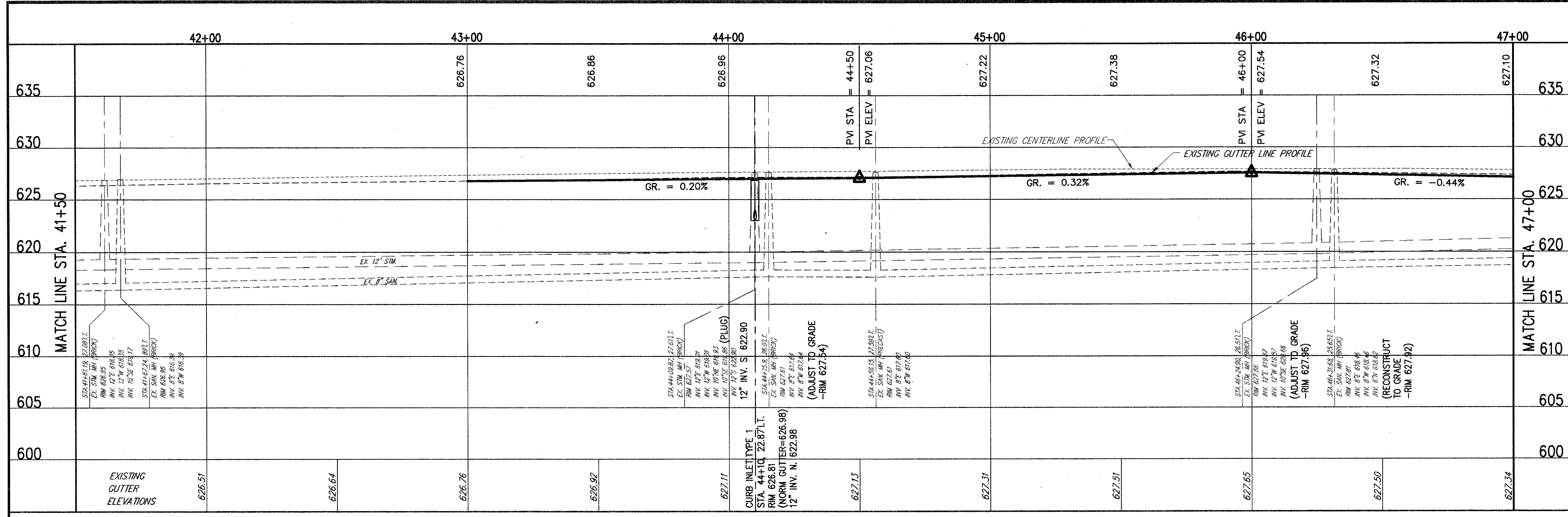
SUBMISSIONS / REVISIONS	

**VINE STREET (S.R. 640) ROADWAY  
WIDENING IMPROVEMENTS**  
CITIES OF WILLOWICK & EASTLAKE, LAKE COUNTY, OHIO

**PROFILE**  
STA. 41+50 TO STA. 47+00

**CT Consultants, Inc.**  
Engineers • Architects • Planners  
Willoughby • Mentor • Columbus • North Canton • Youngstown

DATE:	OCTOBER, 1999
DRAWN BY:	J.J.C.
CHECKED BY:	C.C.H.
APPROVED BY:	
HOR. SCALE:	1" = 20'
VERT. SCALE:	1" = 5'
CONTRACT NO.:	9840624
SHEET NO.:	12
OF:	52



COPYRIGHT - DATE: 08-16-99 10:53 CT CONSULTANTS, INC. H:\1998\64024\PLANS\PROF.DWG