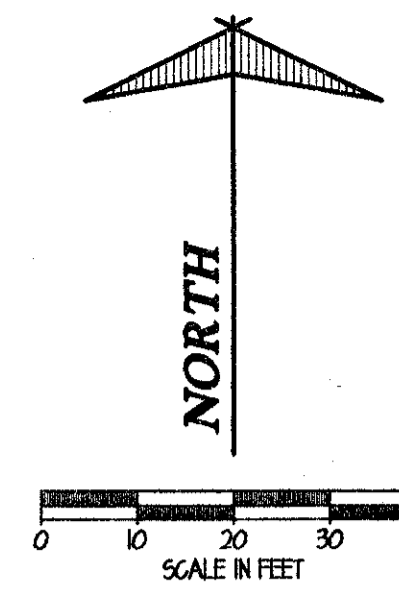


FOR INTERSECTION GRADING AND GEOMETRIC DETAILS, SEE SHEETS 19 & 20

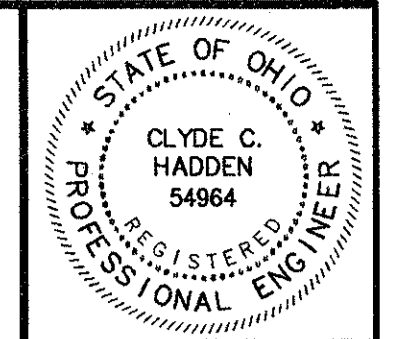
FOR DRIVEWAY REPLACEMENT SCHEDULE AND DETAILS, SEE SHEET 37

FOR DRIVEWAY PROFILES, SEE SHEETS 32 THRU 36

■ DENOTES AREA OF ASPHALT PAVEMENT WIDENING



GAMIL S. & SANNA S. MORGAN
VOL. 835 PG. 1031
P.P.# 284-048-005

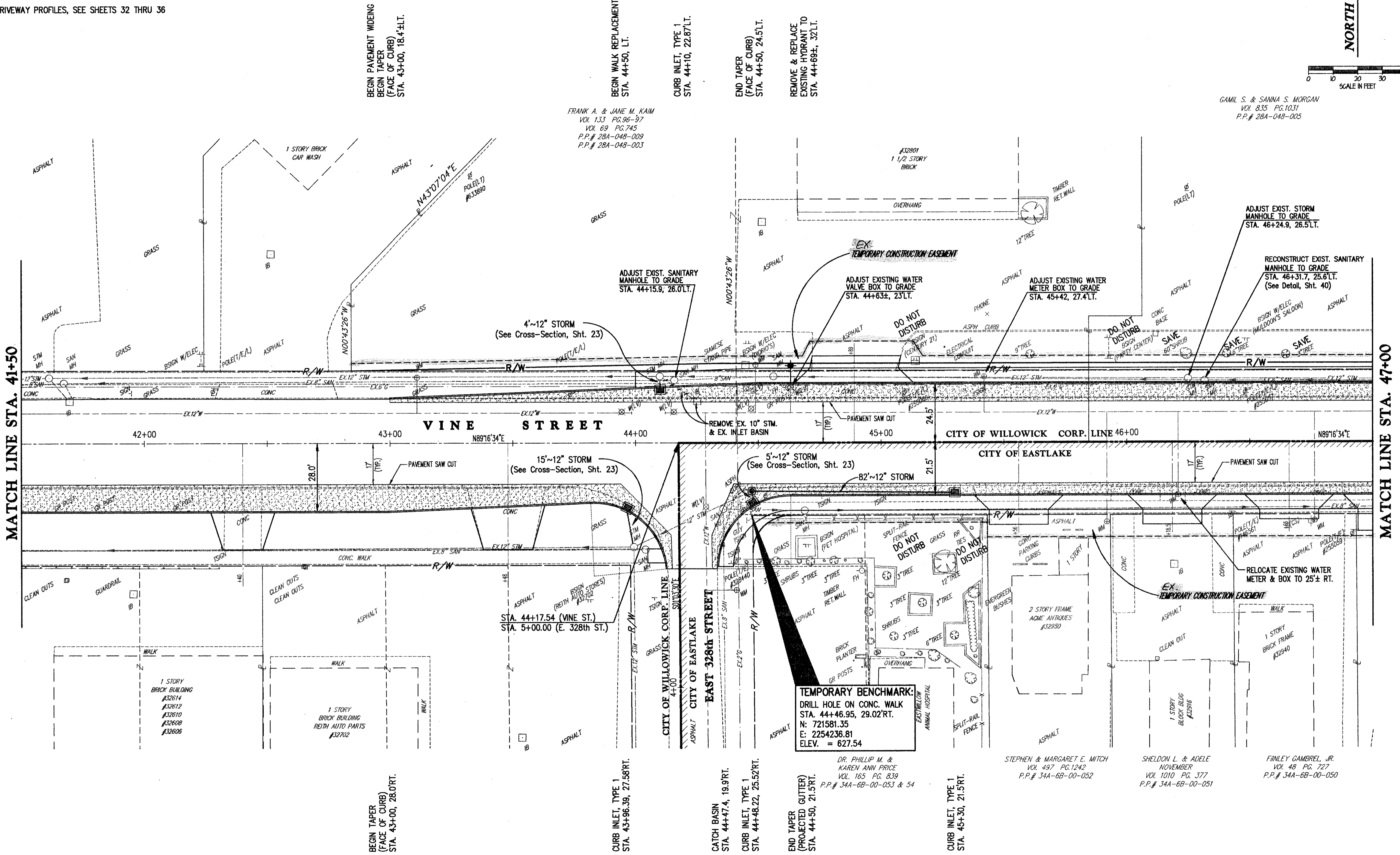


SUBMISSIONS / REVISIONS

VINE STREET (S.R. 640) ROADWAY WIDENING IMPROVEMENTS
CITIES OF WILLOWICK & EASTLAKE, LAKE COUNTY, OHIO
PLAN SHEET
STA. 41+50 TO STA. 47+00

CT Consultants, Inc.
Engineers • Architects • Planners
Willoughby • Mentor • Columbus • North Canton • Youngstown

DATE:	OCTOBER, 1999
DRAWN BY:	J.J.C.
CHECKED BY:	C.C.H.
APPROVED BY:	
SCALE:	
HOR.:	1" = 20'
VERT.:	
CONTRACT NO.:	9840624
SHEET NO.:	OF
11	52



FRANK A. & JANE M. KAM
VOL. 133 PG. 96-97
VOL. 69 PG. 745
P.P.# 284-048-009
P.P.# 284-048-003

BEGIN PAVEMENT WIDENING
(FACE OF CURB)
STA. 43+00, 18.4' H.T.

BEGIN WALK REPLACEMENT
STA. 44+50, 1.1'

CURB INLET, TYPE 1
STA. 44+10, 22.87' L.I.

END TAPER
(FACE OF CURB)
STA. 44+50, 24.5' L.I.

REMOVE & REPLACE
EXISTING HYDRANT TO
STA. 44+69±, 32' L.I.

BEGIN TAPER
(FACE OF CURB)
STA. 43+00, 28.0' RT.

CURB INLET, TYPE 1
STA. 43+96.39, 27.58' RT.

CATCH BASIN
STA. 44+47.4, 19.9' RT.

CURB INLET, TYPE 1
STA. 44+48.22, 25.52' RT.

END TAPER
(PROJECTED GUTTER)
STA. 44+50, 21.5' RT.

DR. PHILLIP M. &
KAREN ANN PRICE
VOL. 165 PG. 839
P.P.# 34A-6B-00-053 & 54

CURB INLET, TYPE 1
STA. 45+30, 21.5' RT.

STEPHEN & MARGARET E. MITCH
VOL. 497 PG. 1242
P.P.# 34A-6B-00-052

SHELDON L. & ADELE
NOVEMBER
VOL. 1010 PG. 377
P.P.# 34A-6B-00-051

FINLEY GAMBEREL, JR.
VOL. 48 PG. 727
P.P.# 34A-6B-00-050

COPYRIGHT - DATE: 12-07-99 10:55 AM CT CONSULTANTS INC. H:\1999\840624\DWG\9840624.DWG