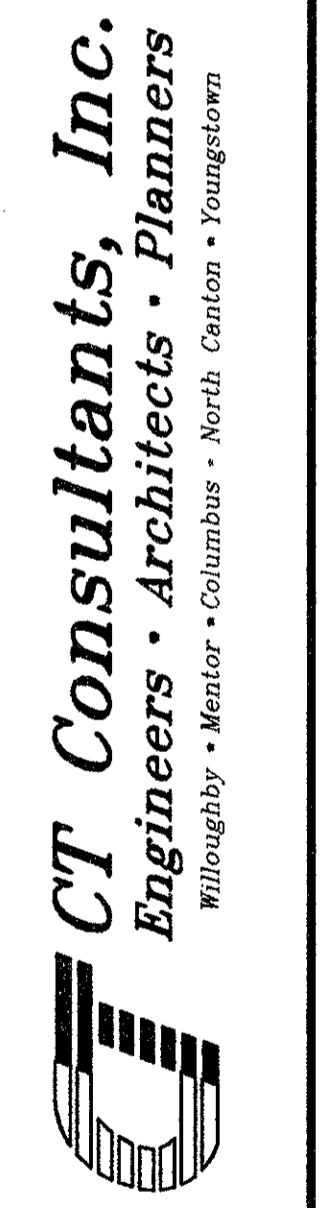


SUBMISSIONS / REVISIONS	

**VINE STREET (S.R. 640) ROADWAY
WIDENING IMPROVEMENTS**
CITIES OF WILLOWICK & EASTLAKE, LAKE COUNTY, OHIO

PROFILE
STA. 37+00 TO STA. 41+50



DATE: OCTOBER, 1999

DRAWN BY: J.C.G.

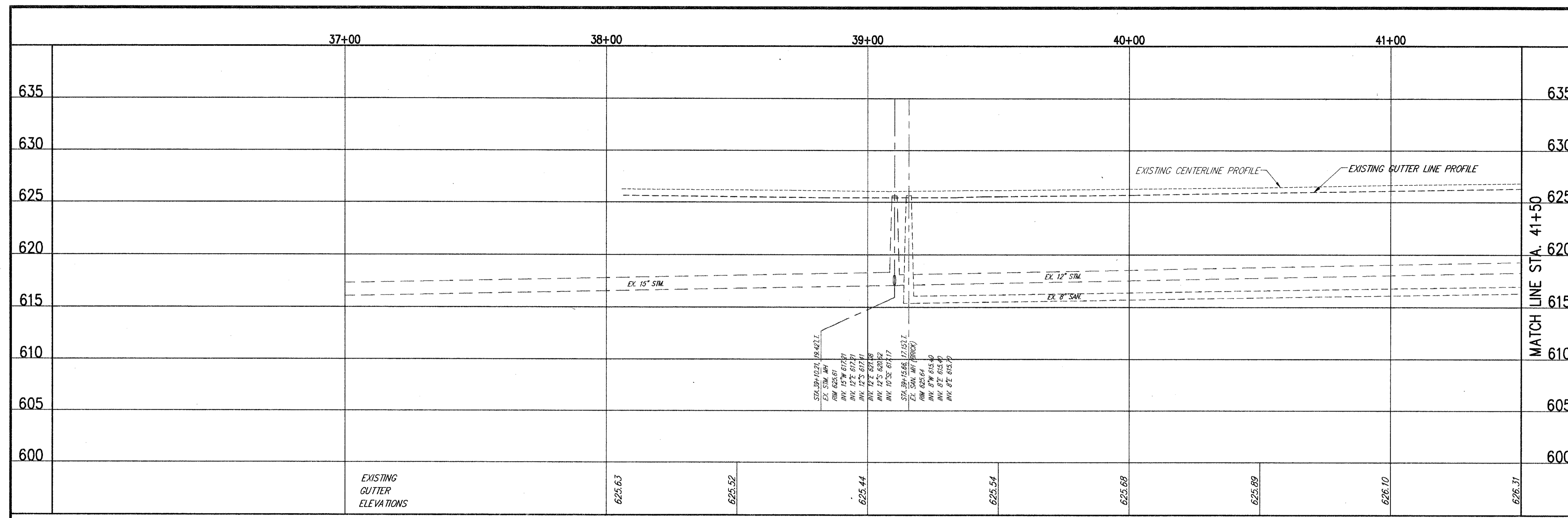
CHECKED BY: C.C.H.

APPROVED BY: _____

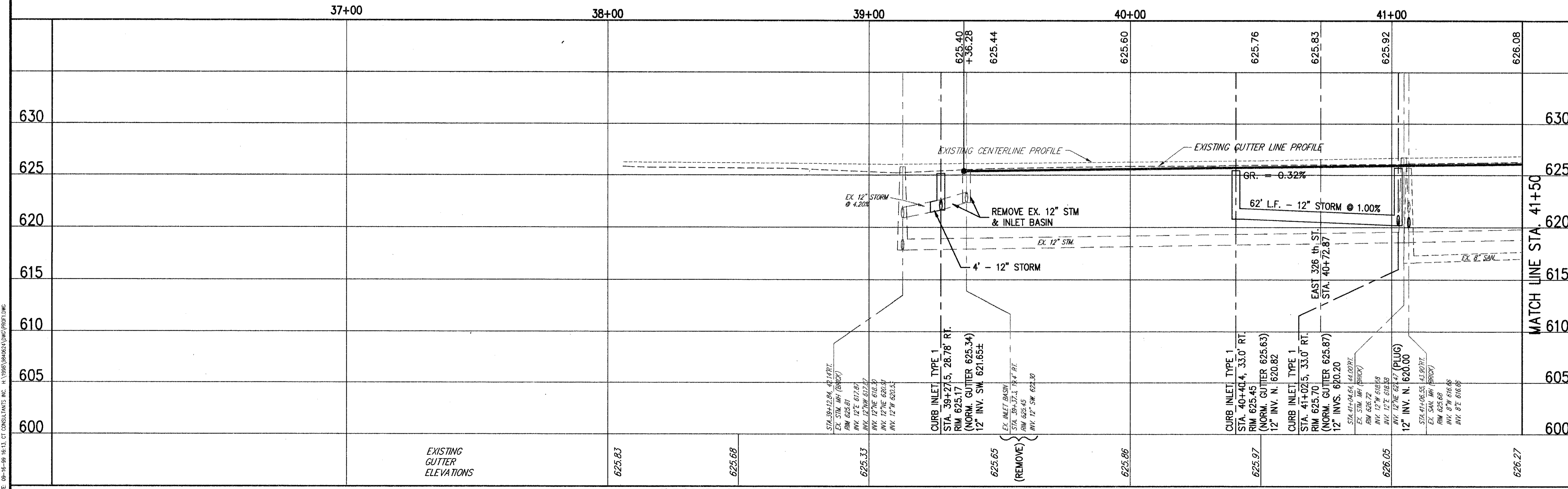
SCALE:
HOR. 1" = 20'
VERT. 1" = 5'

CONTRACT No.
9840624

SHEET NO. OF
10 52



LEFT SIDE GUTTER PROFILE



RIGHT SIDE GUTTER PROFILE

COPYRIGHT - DATE 09-16-99 10:13 CT CONSULTANTS, INC. E:\1998\9840624\DWG\PROF.DWG